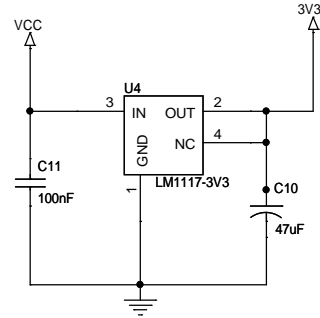
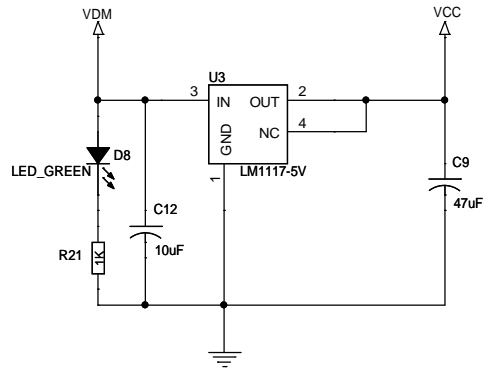


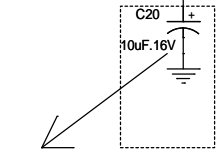
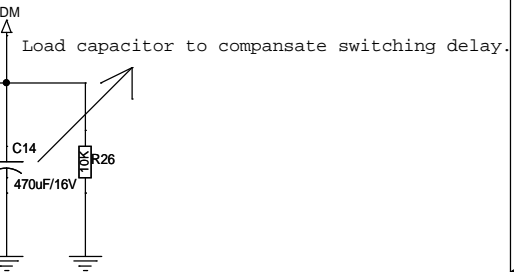
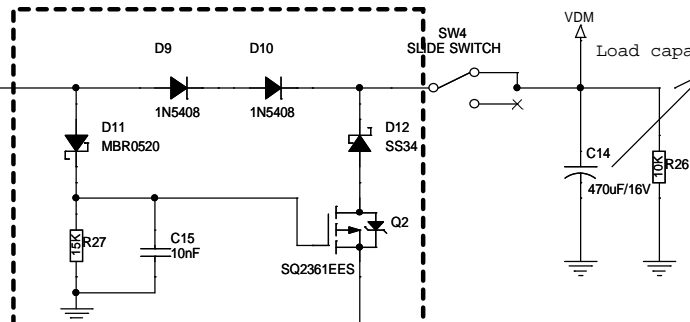
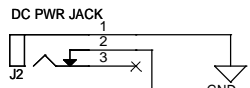
POWER SECTION



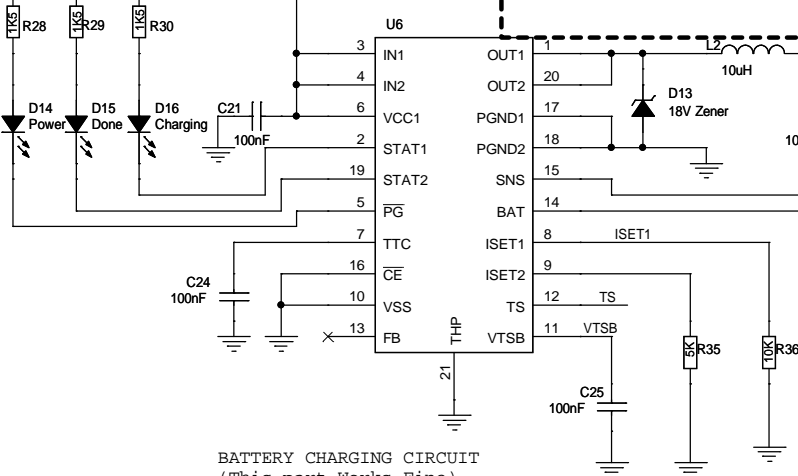
SWITCHING CIRCUIT

VDM is directly used for Thermal Printer Powering

Input from SMPS. 9.5V/3amp

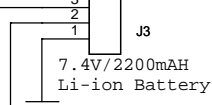


I suspect this to be a issue for Controller reset when DC jack is Plugged in on J2.
(Not too sure about this)



BATTERY CHARGING CIRCUIT
(This part Works Fine)
Charge Current Used: 500 mA

BATTERY CONNECTED HERE



Working of Switching circuit :

When input supply (SMPS) is present the power to the load is delivered by the SMPS. Diodes D9 & D10 are used to drop the voltage because Load voltage should not be more than 8.4V. Q2 gate is pulled high through D11 and Q2 will be disabled and blocks Battery Supply. D12 is used to block the direct flow of current from Input supply to Battery. When input supply is not present the power to the Load is delivered by the Battery. Q2 gate is pulled low, Q2 is enabled and power to the load supplied by Battery.