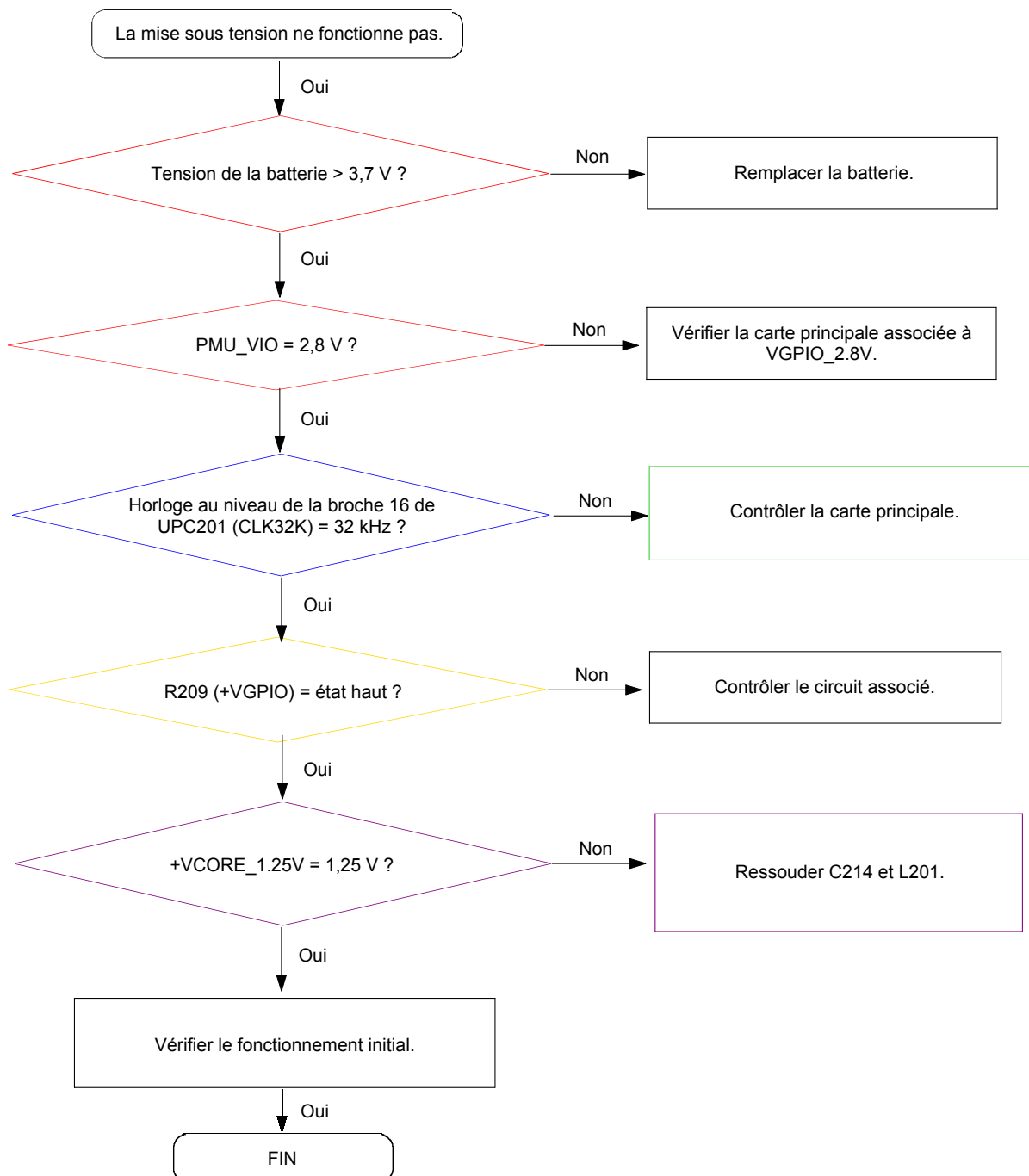
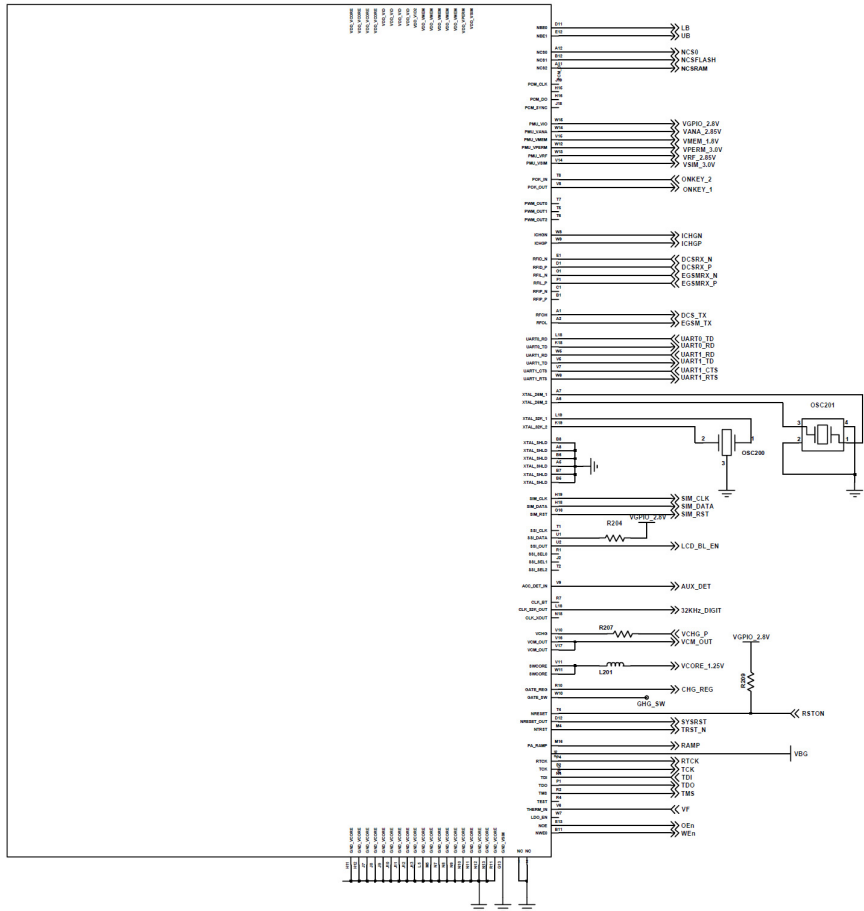


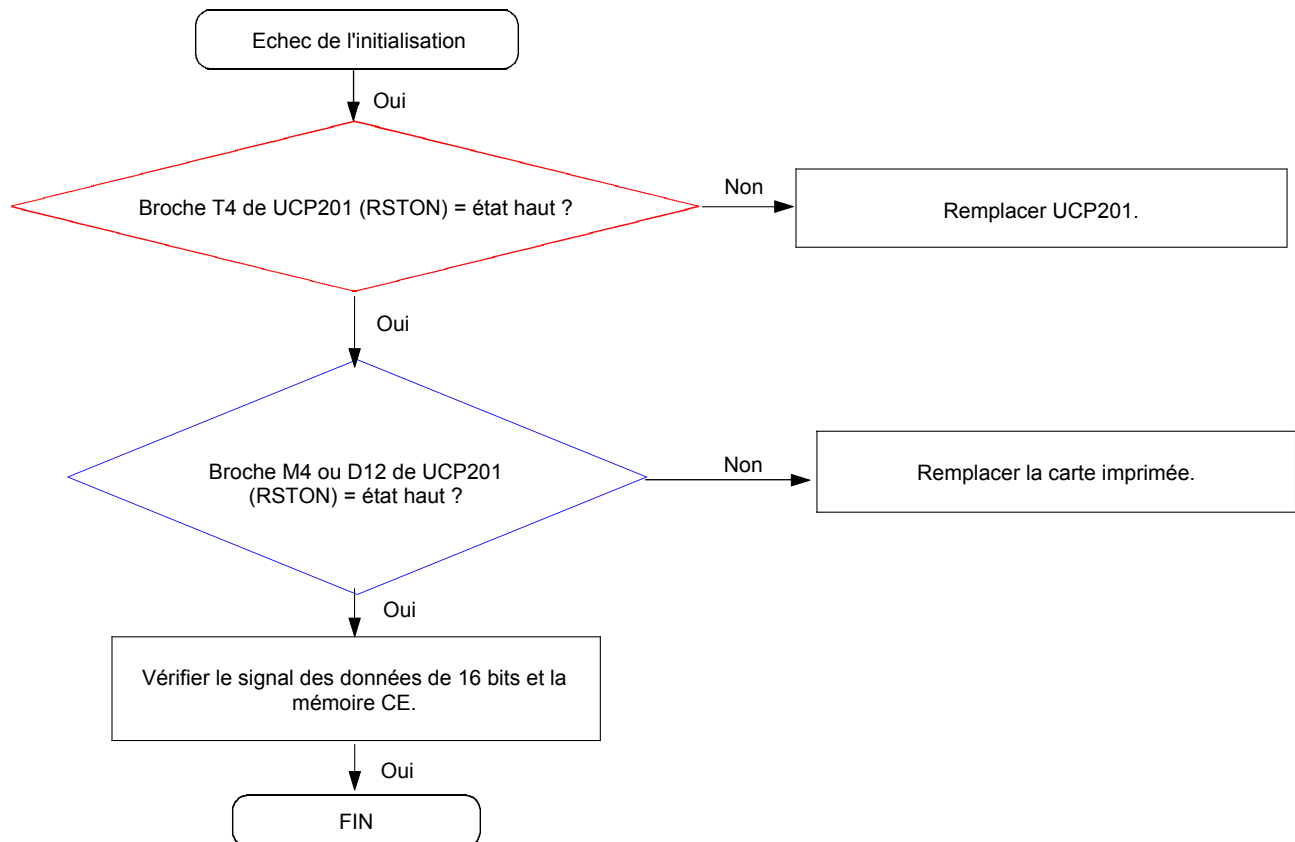
9. Recherche des pannes

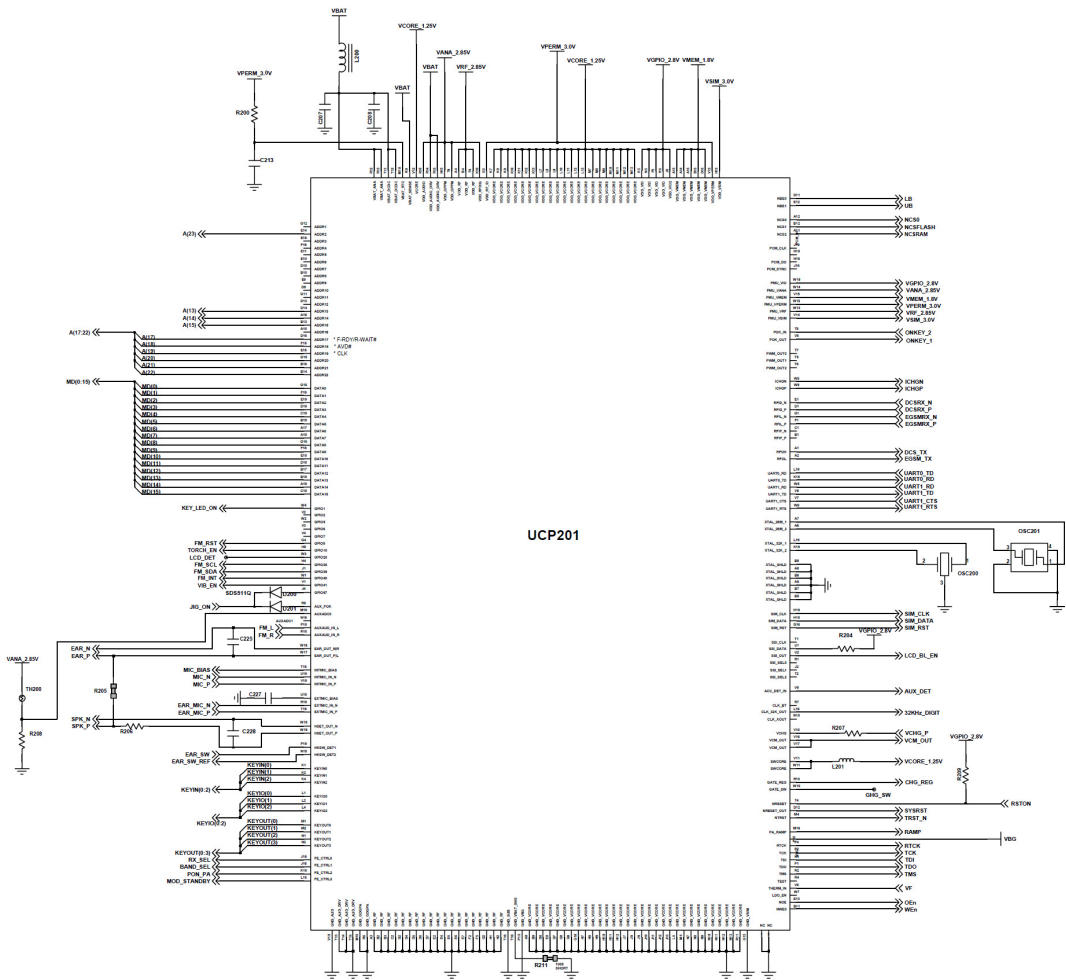
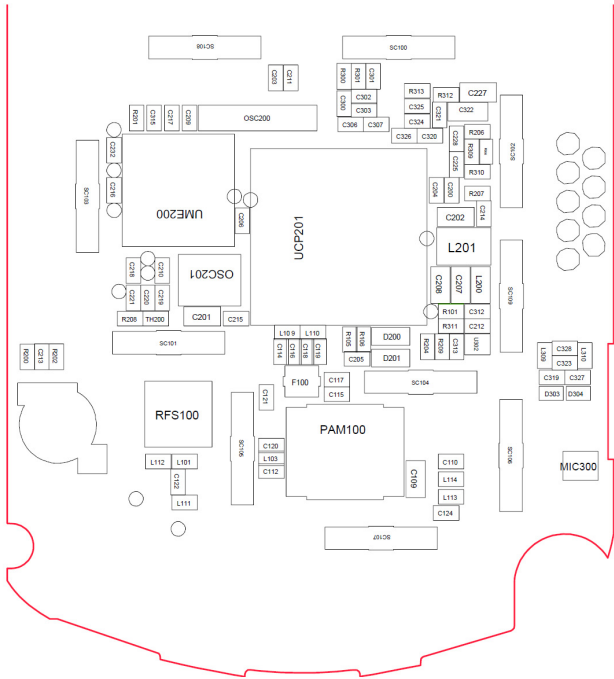
9-1. Mise sous tension



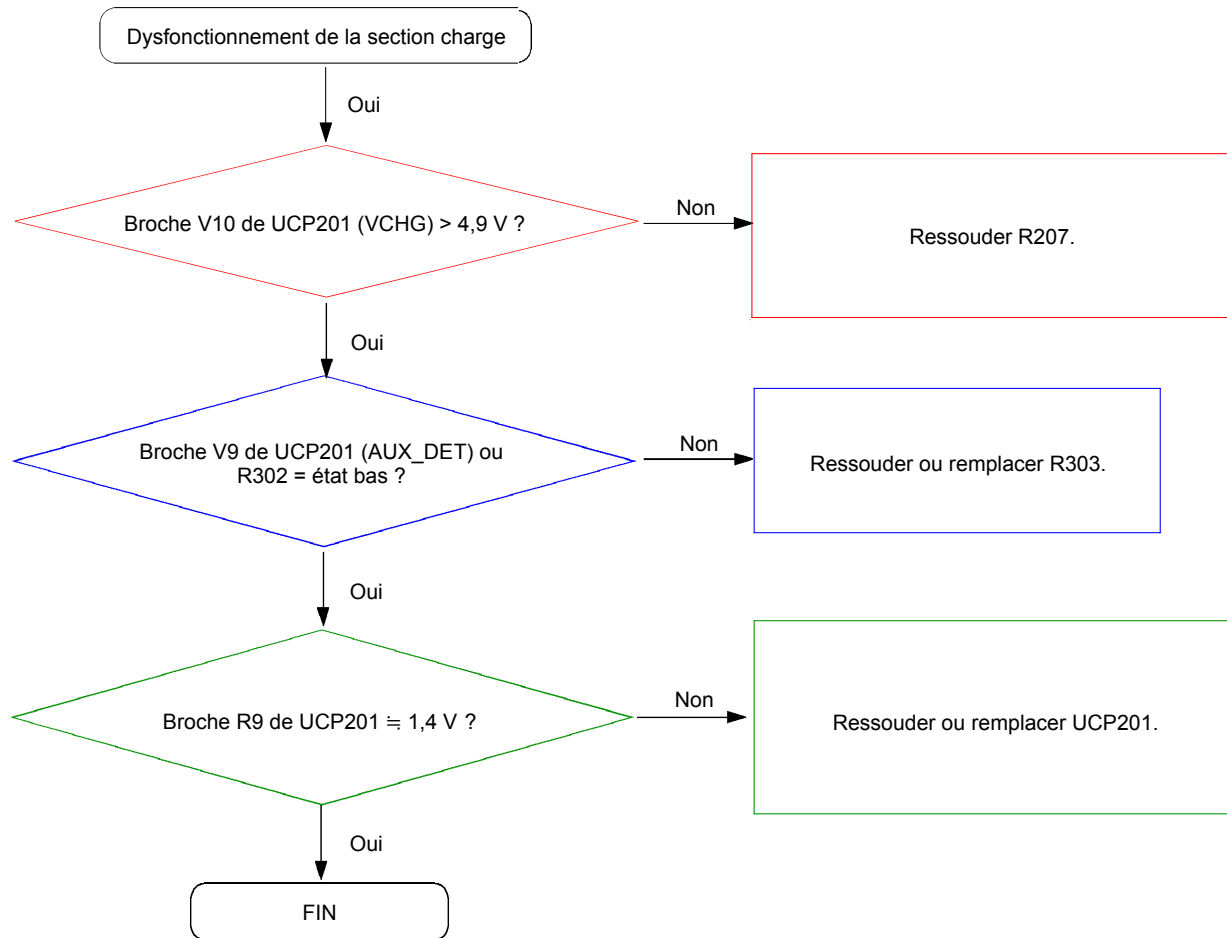


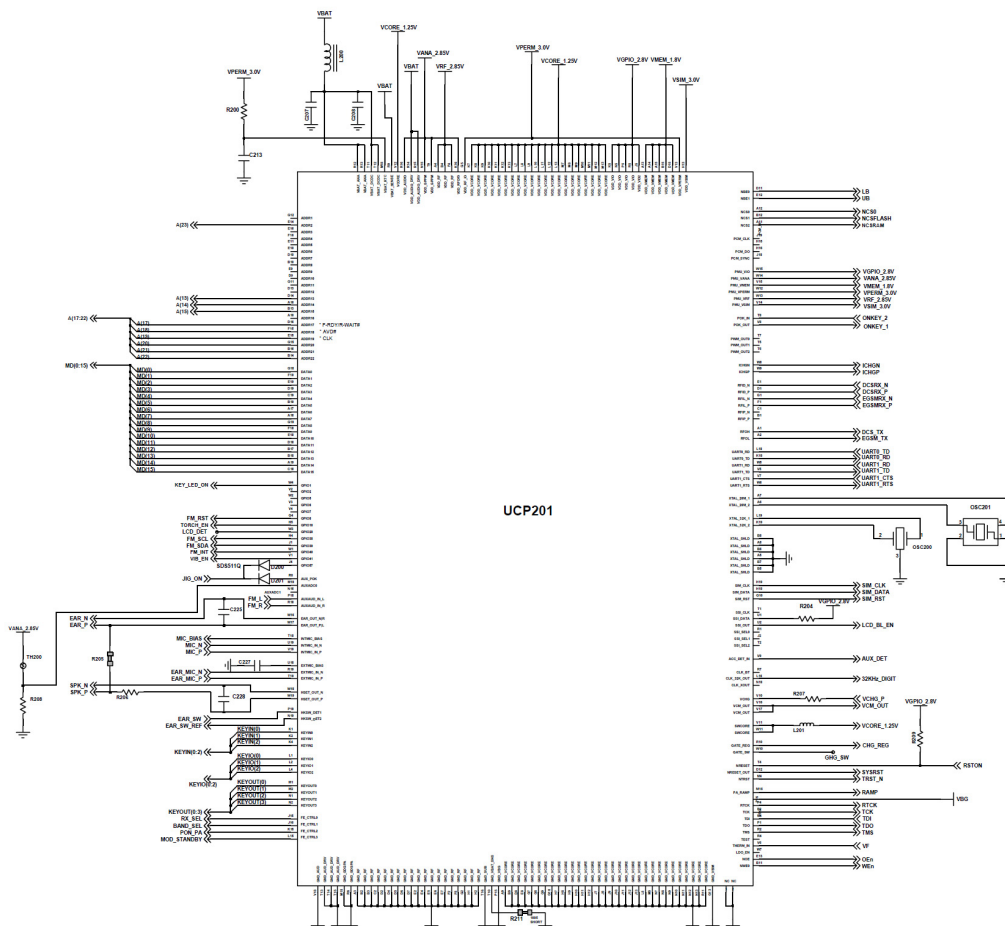
9-2. Initialisation



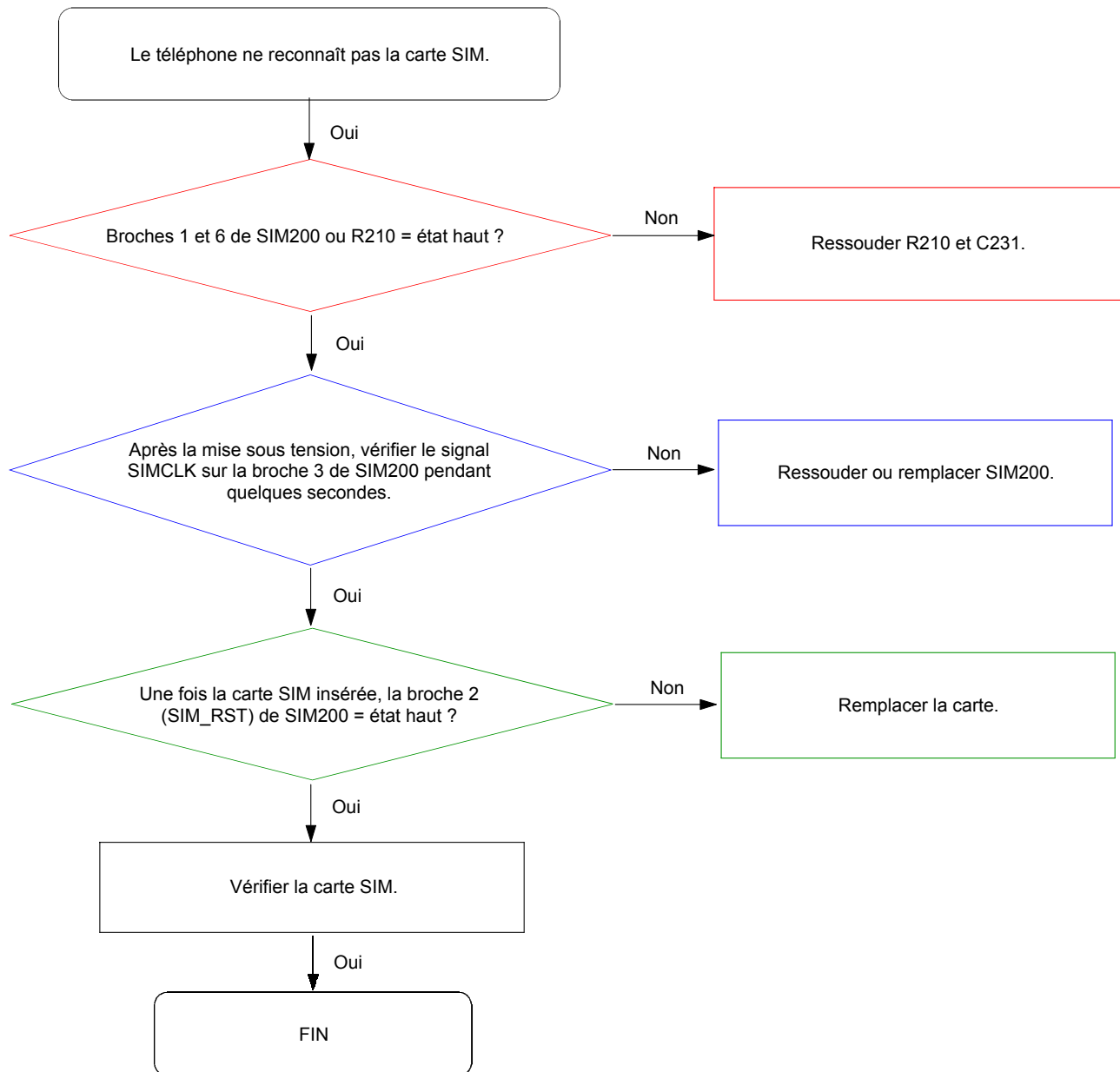


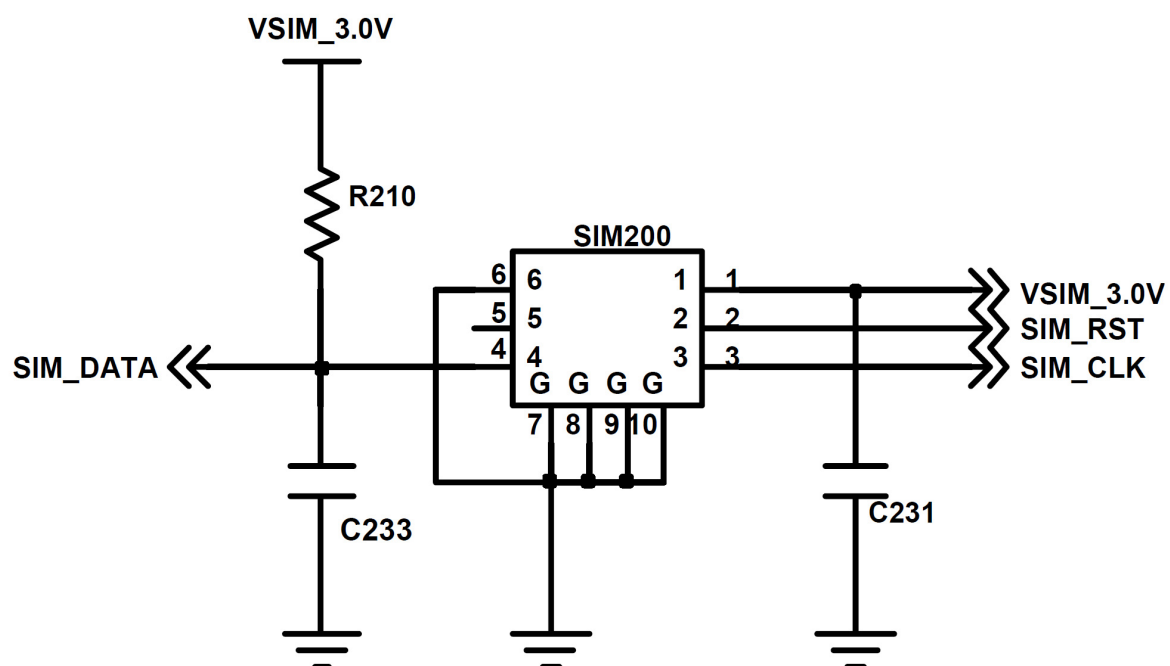
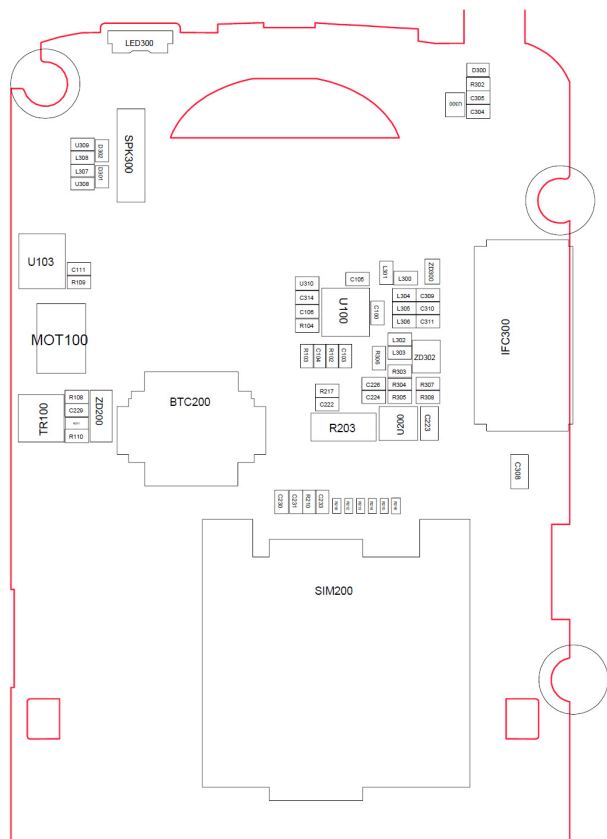
9-3. Section charge



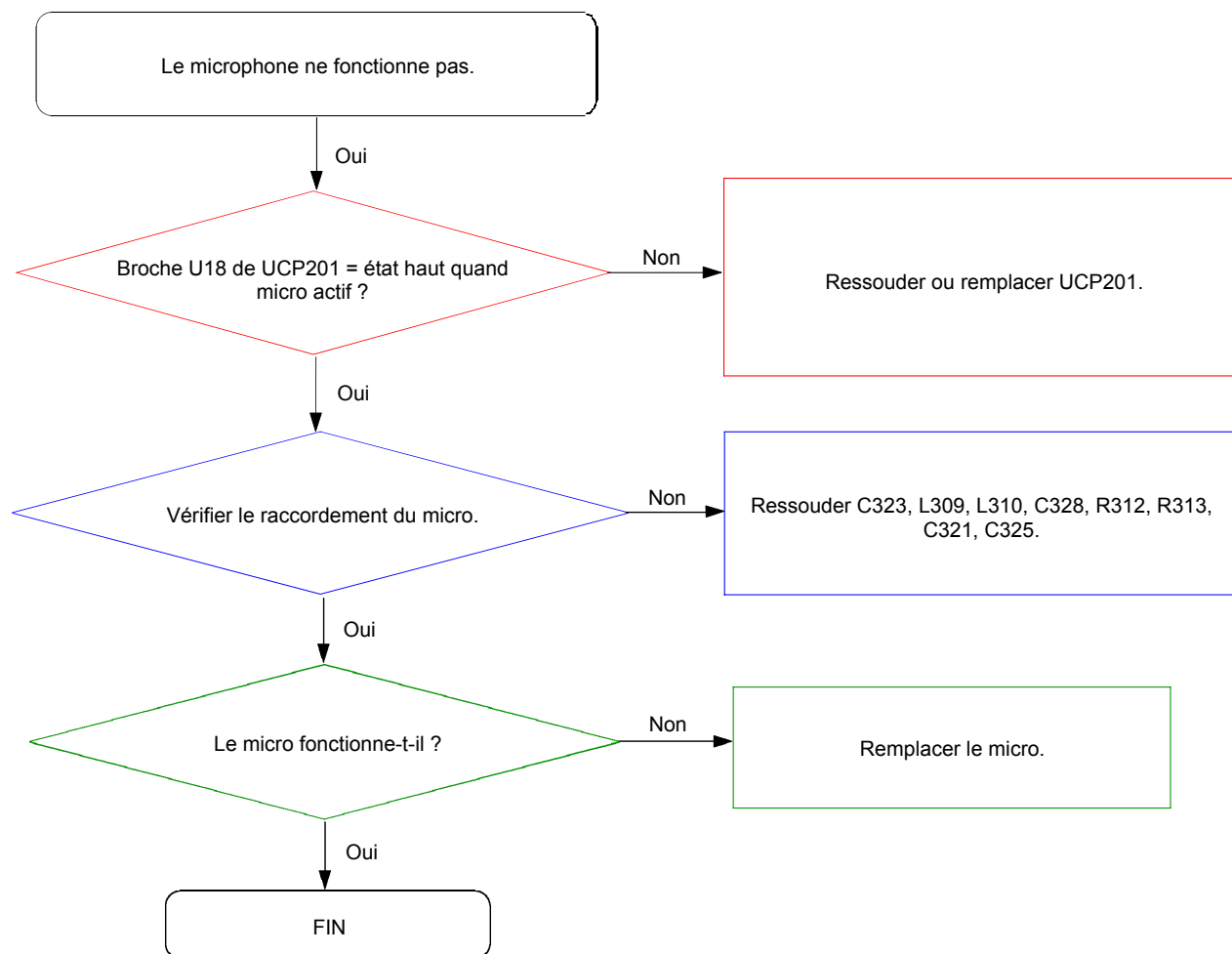


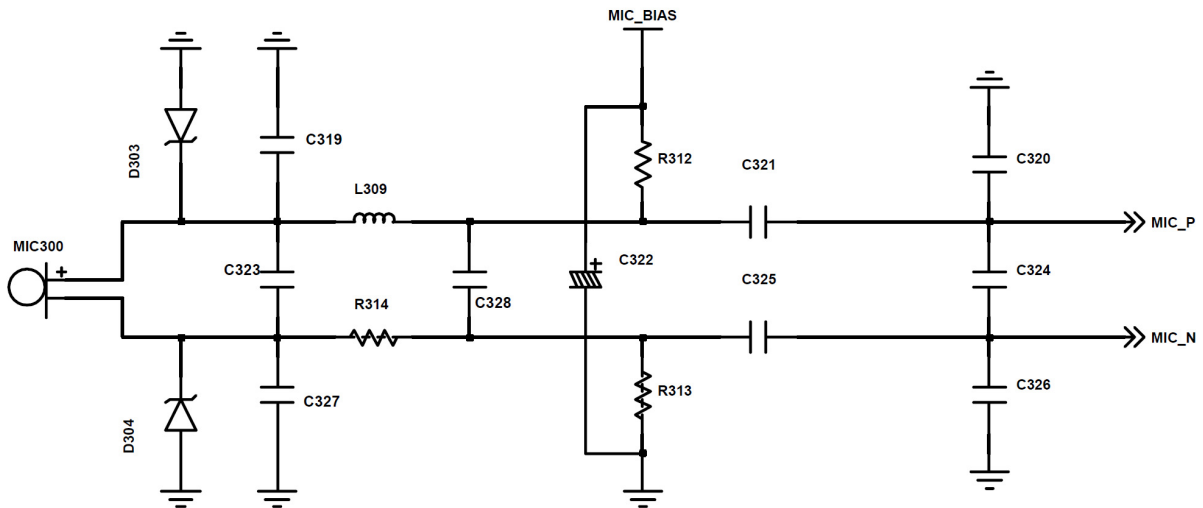
9-4. Section SIM



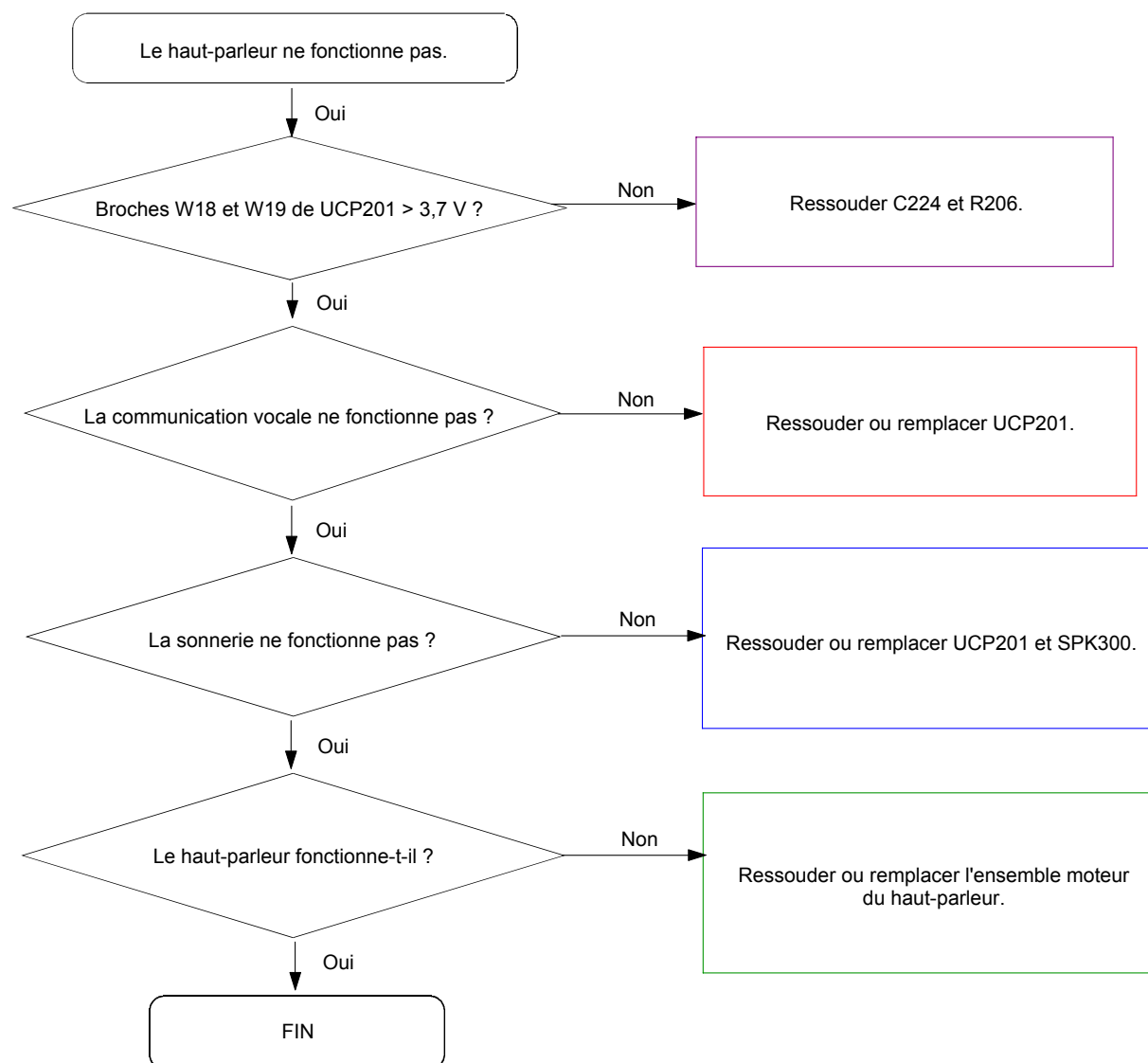


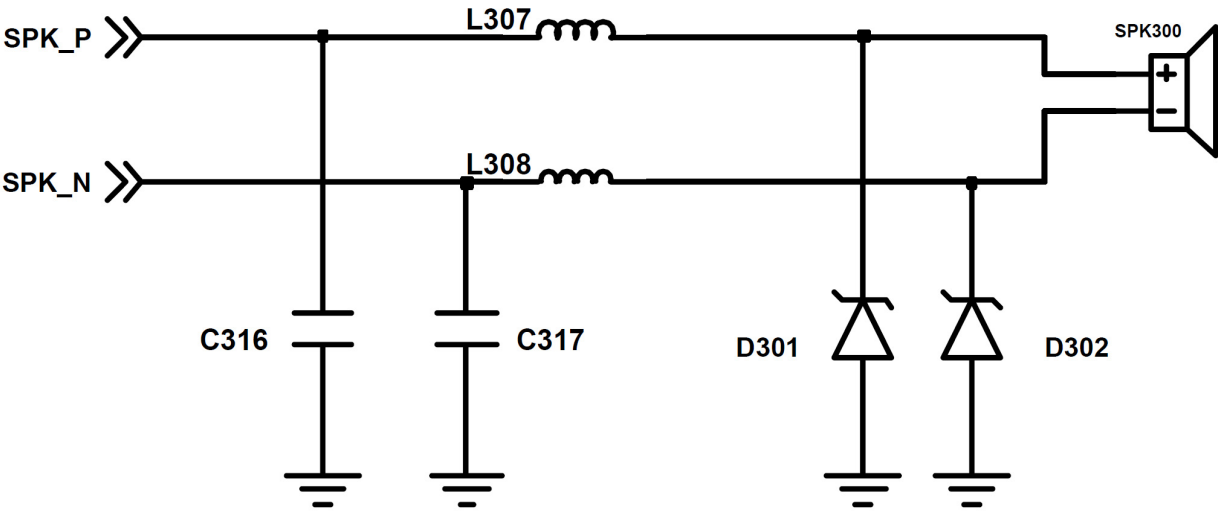
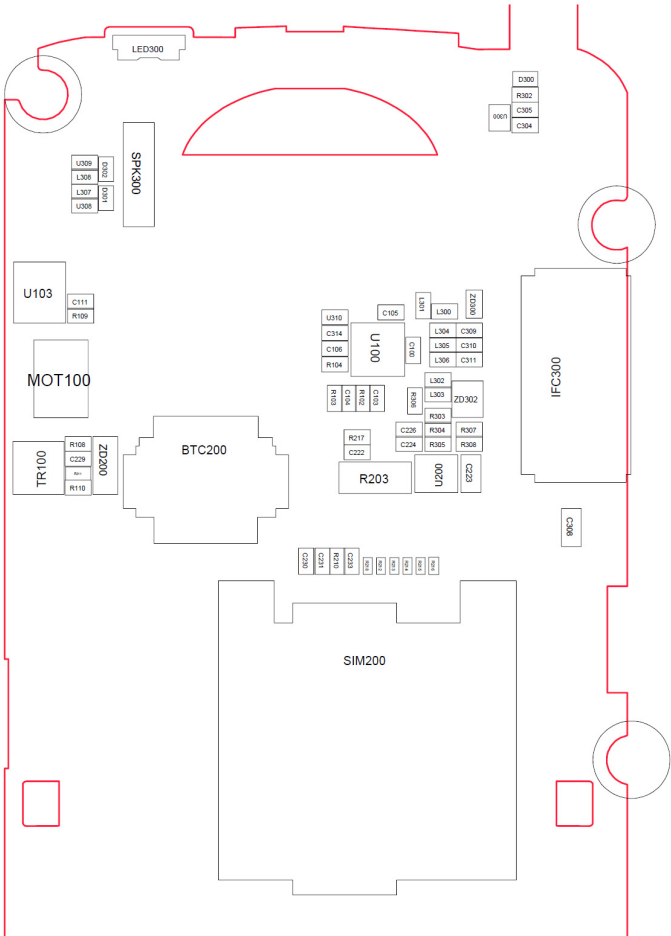
9-5. Section microphone



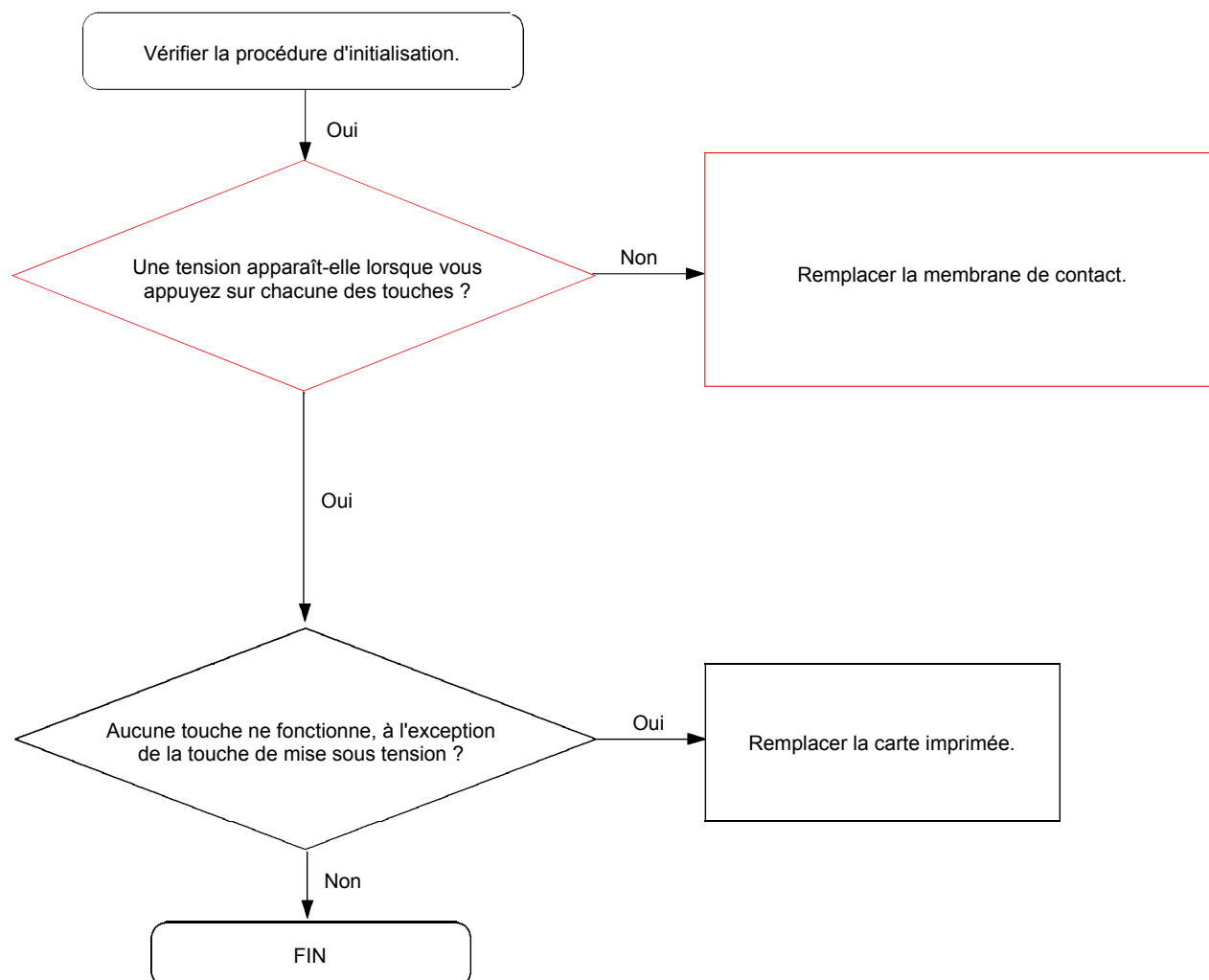


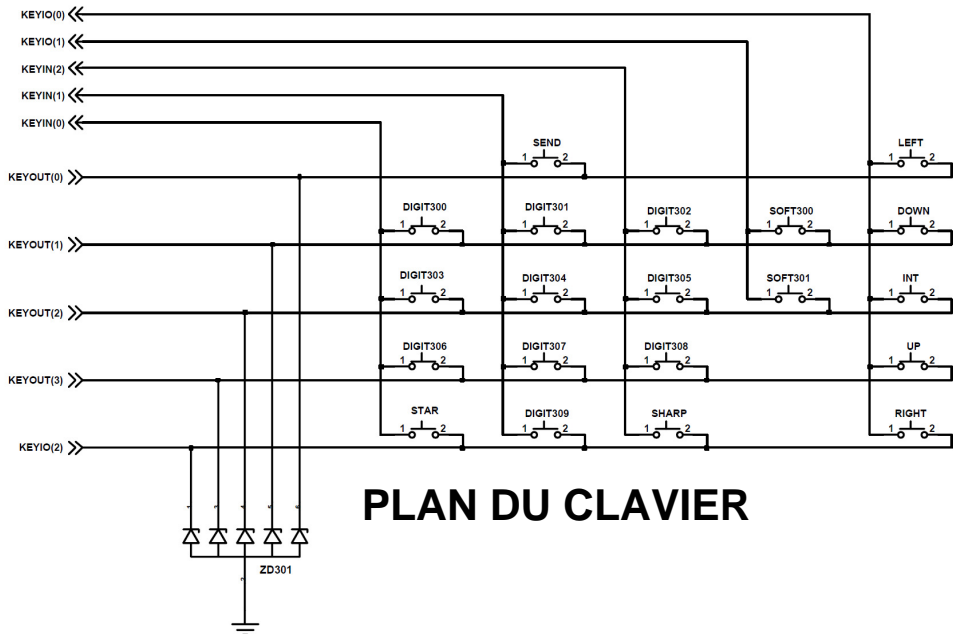
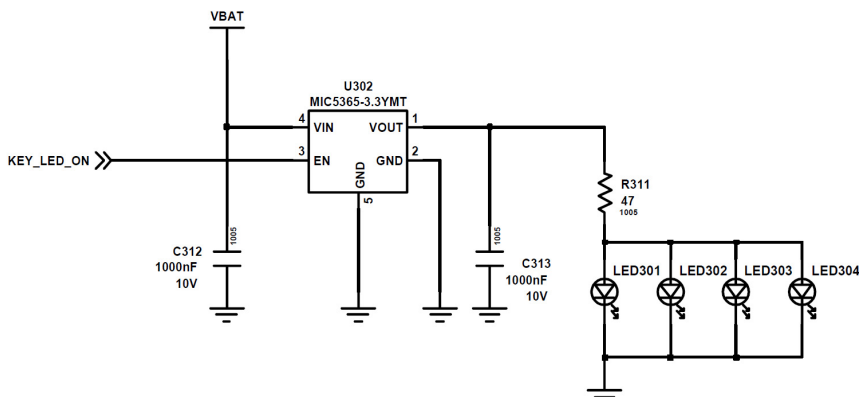
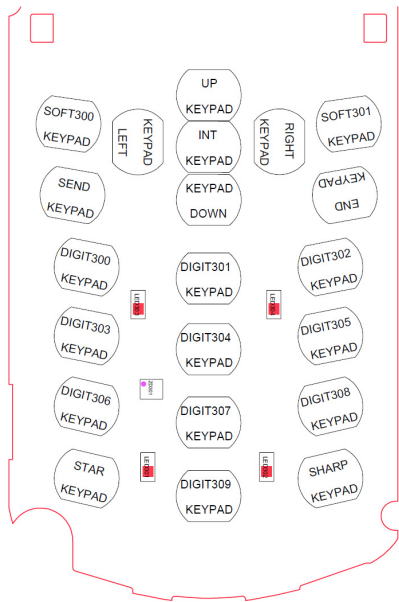
9-6. Section haut-parleur





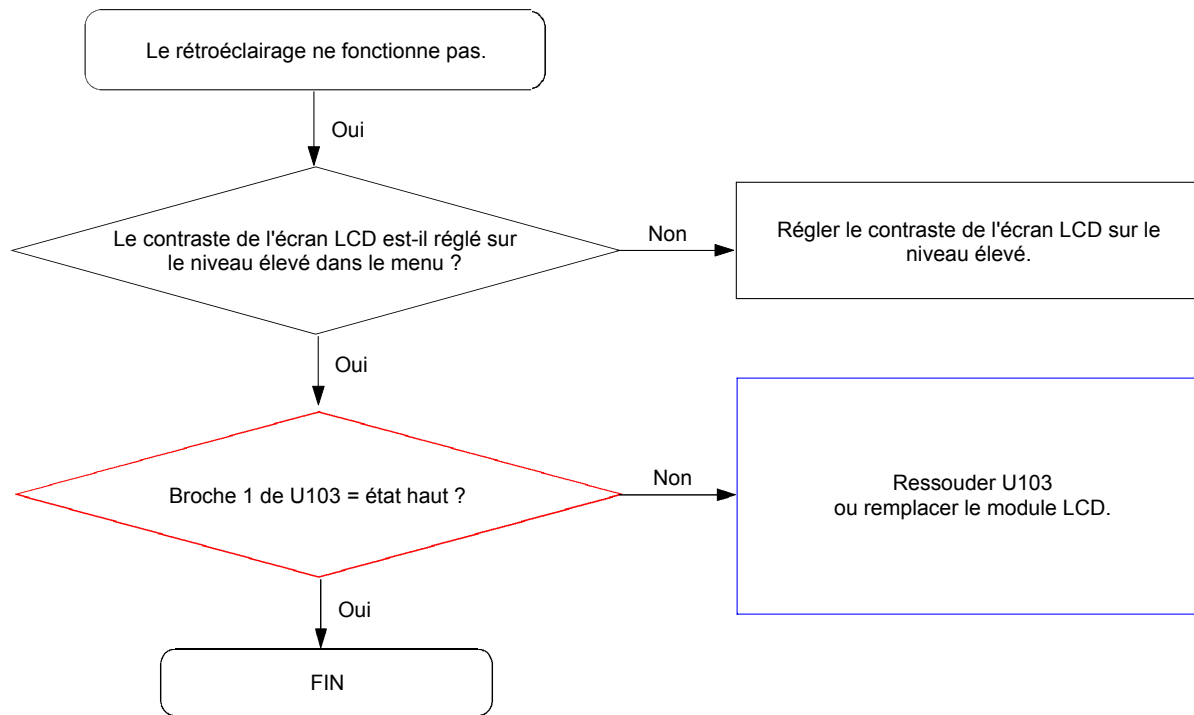
9-7. Entrée des données du clavier

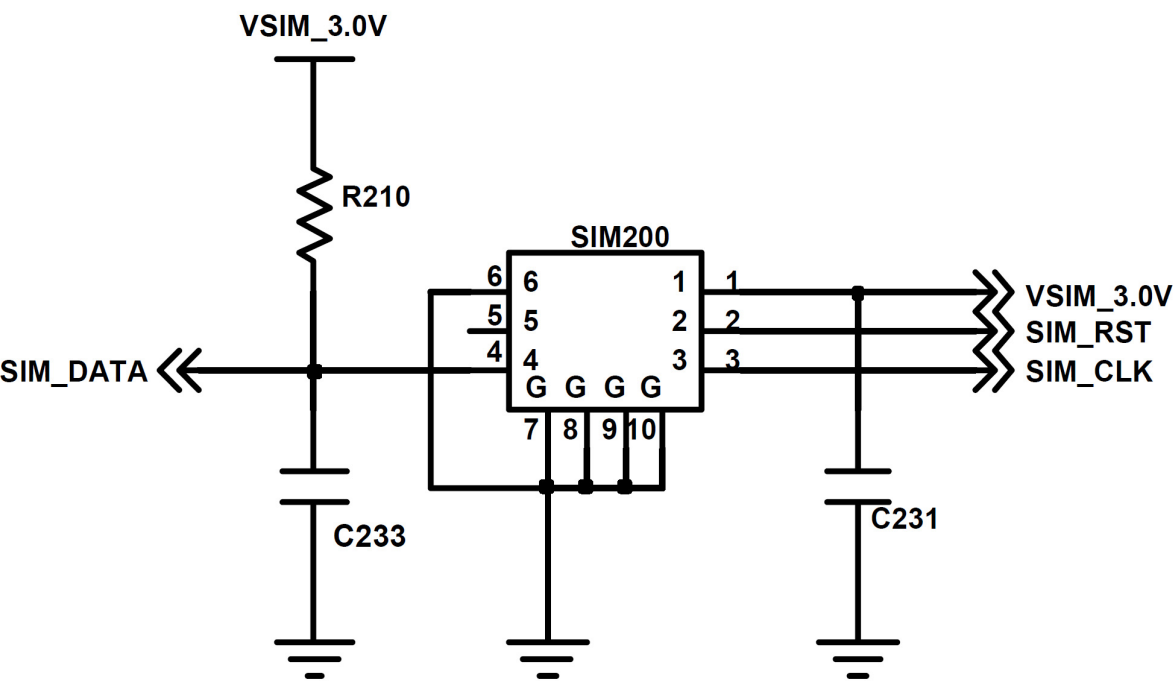
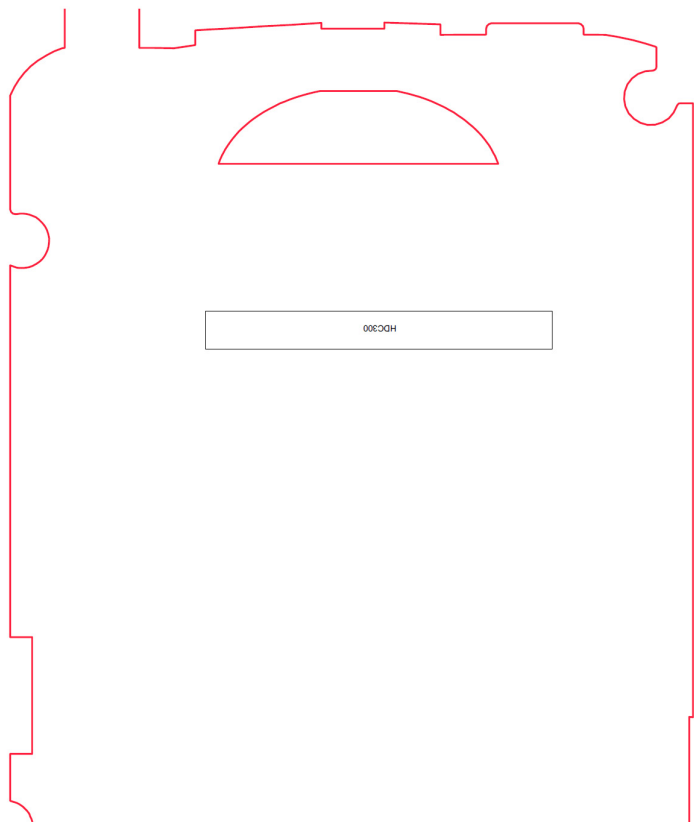




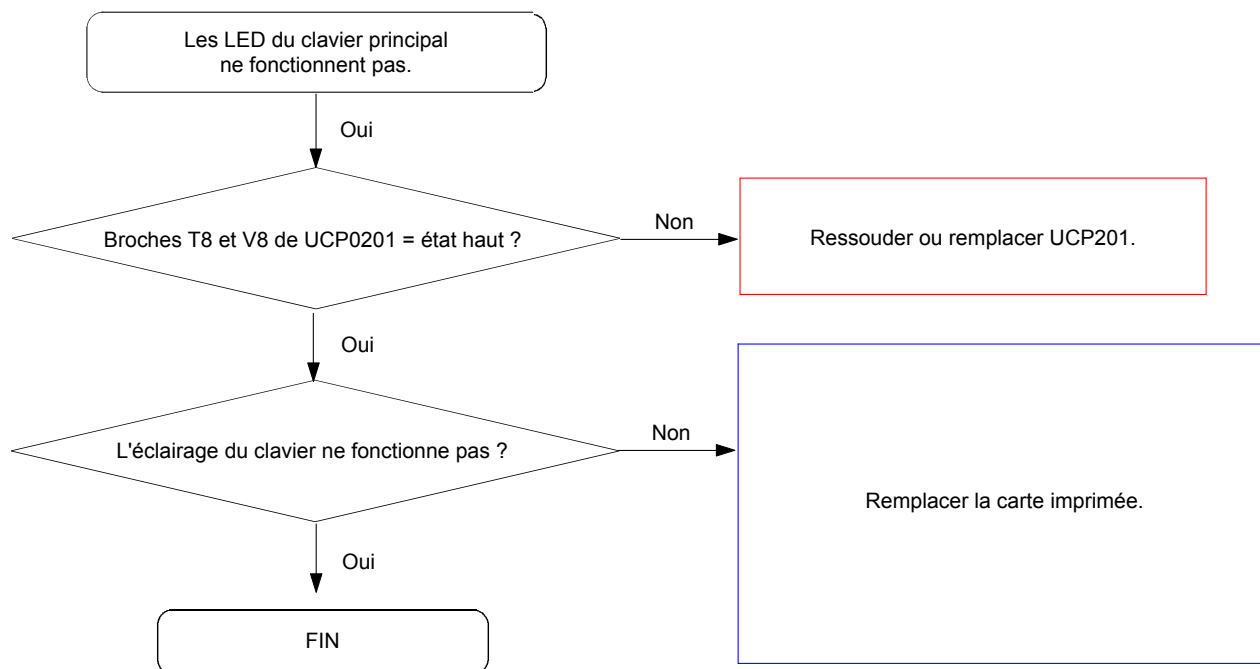
PLAN DU CLAVIER

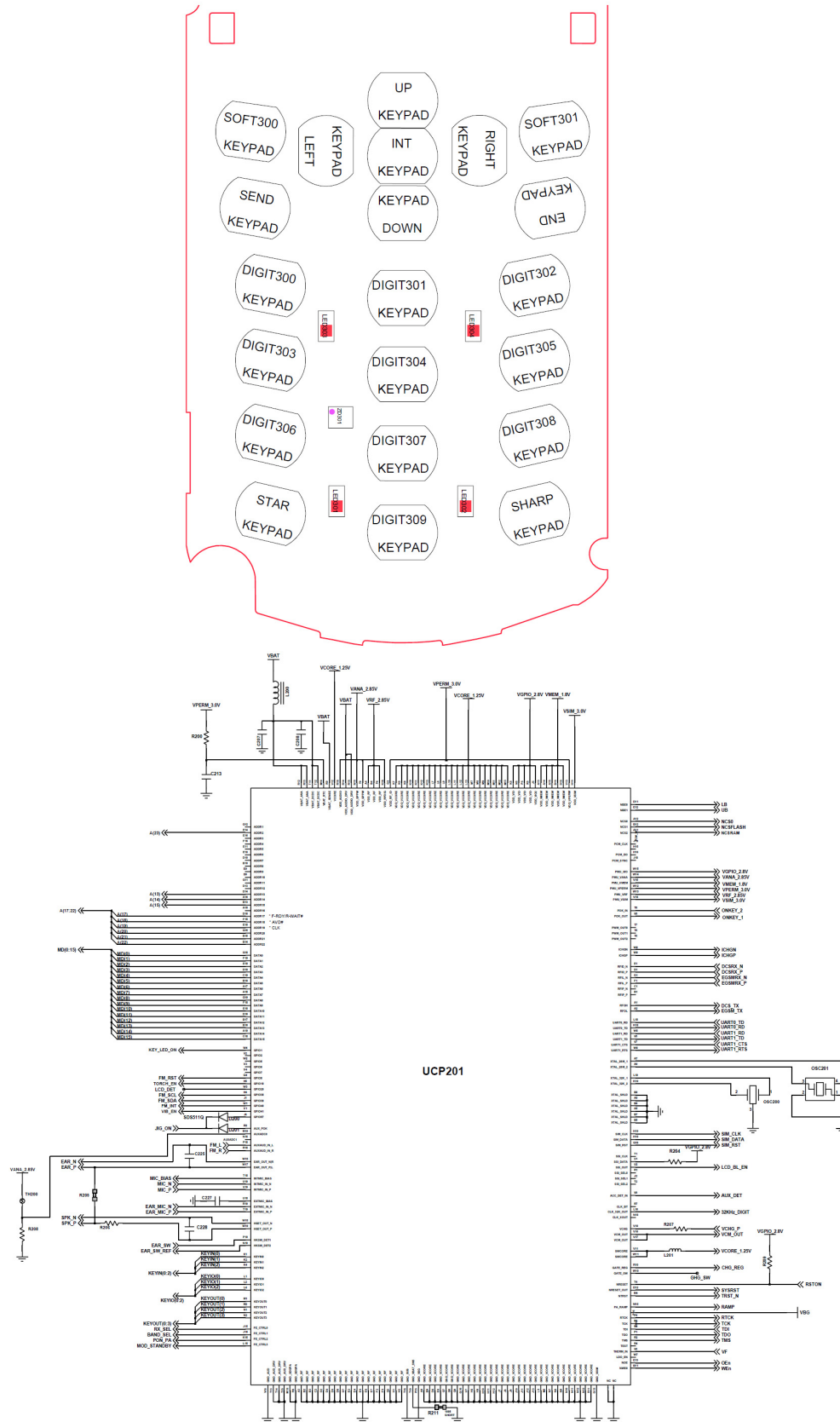
9-8. Rétroéclairage (écran LCD couleur principal)



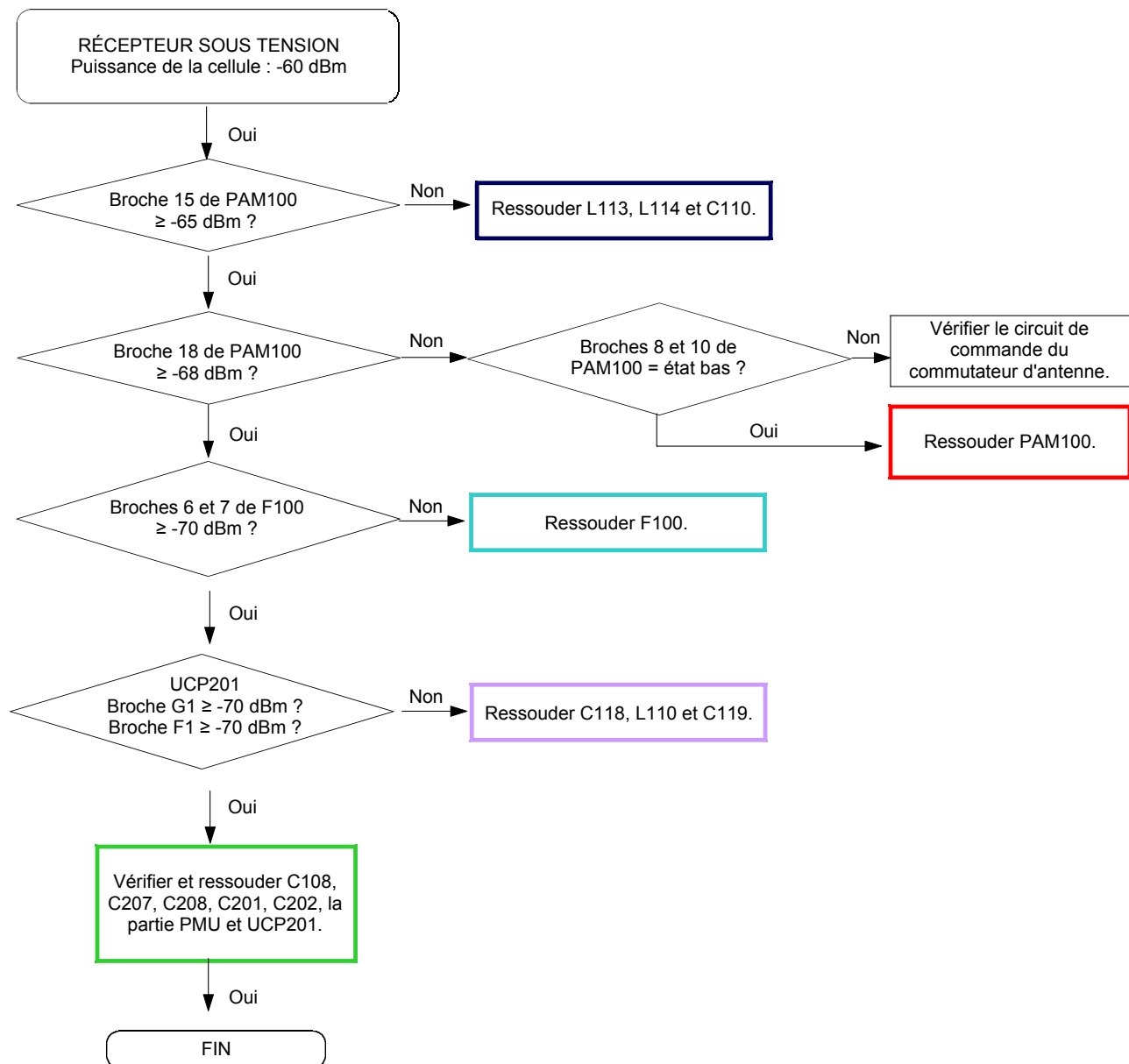


9-9. Rétroéclairage des touches

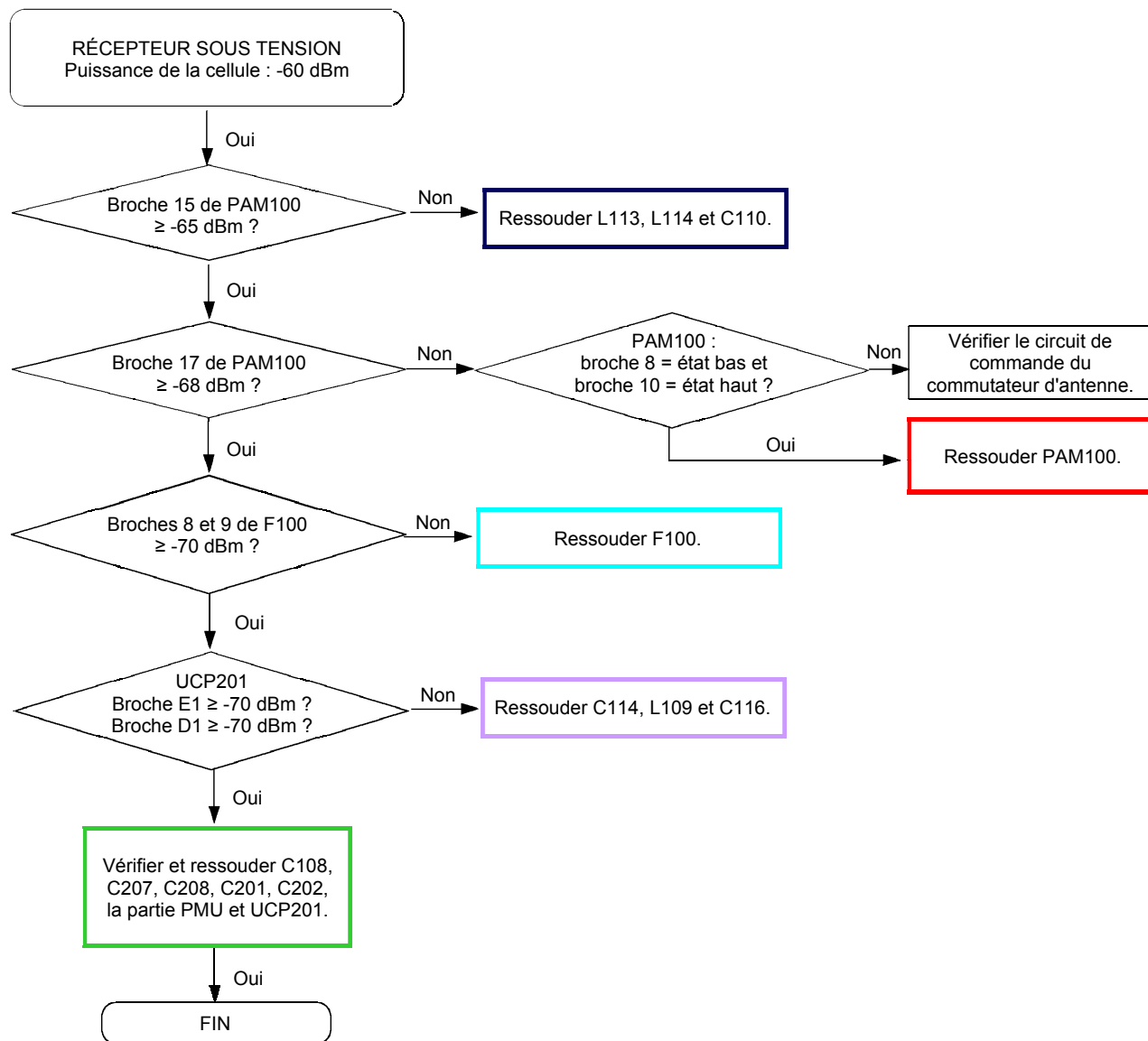




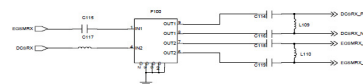
9-10. Récepteur GSM900

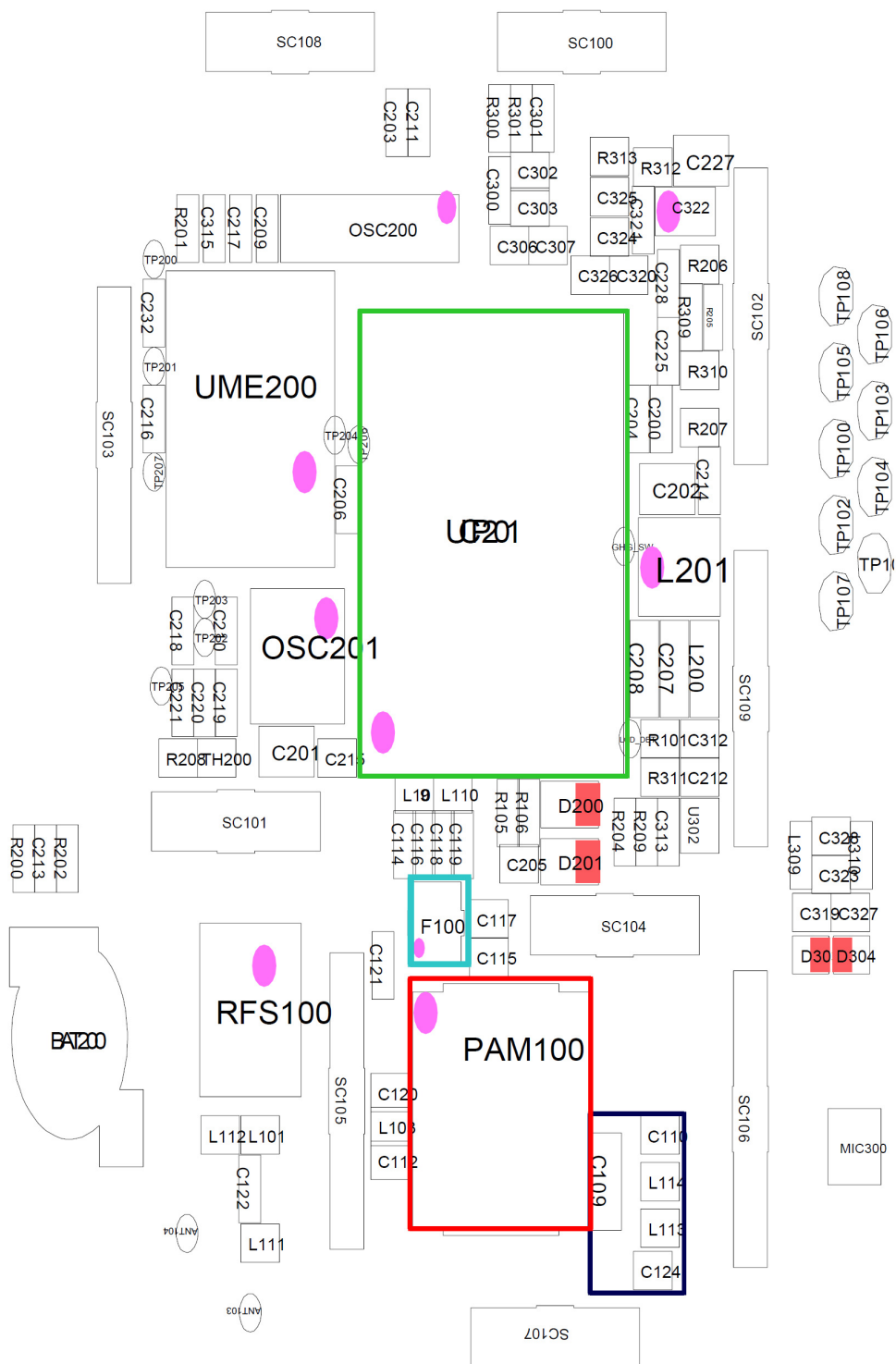


9-11. Récepteur DCS

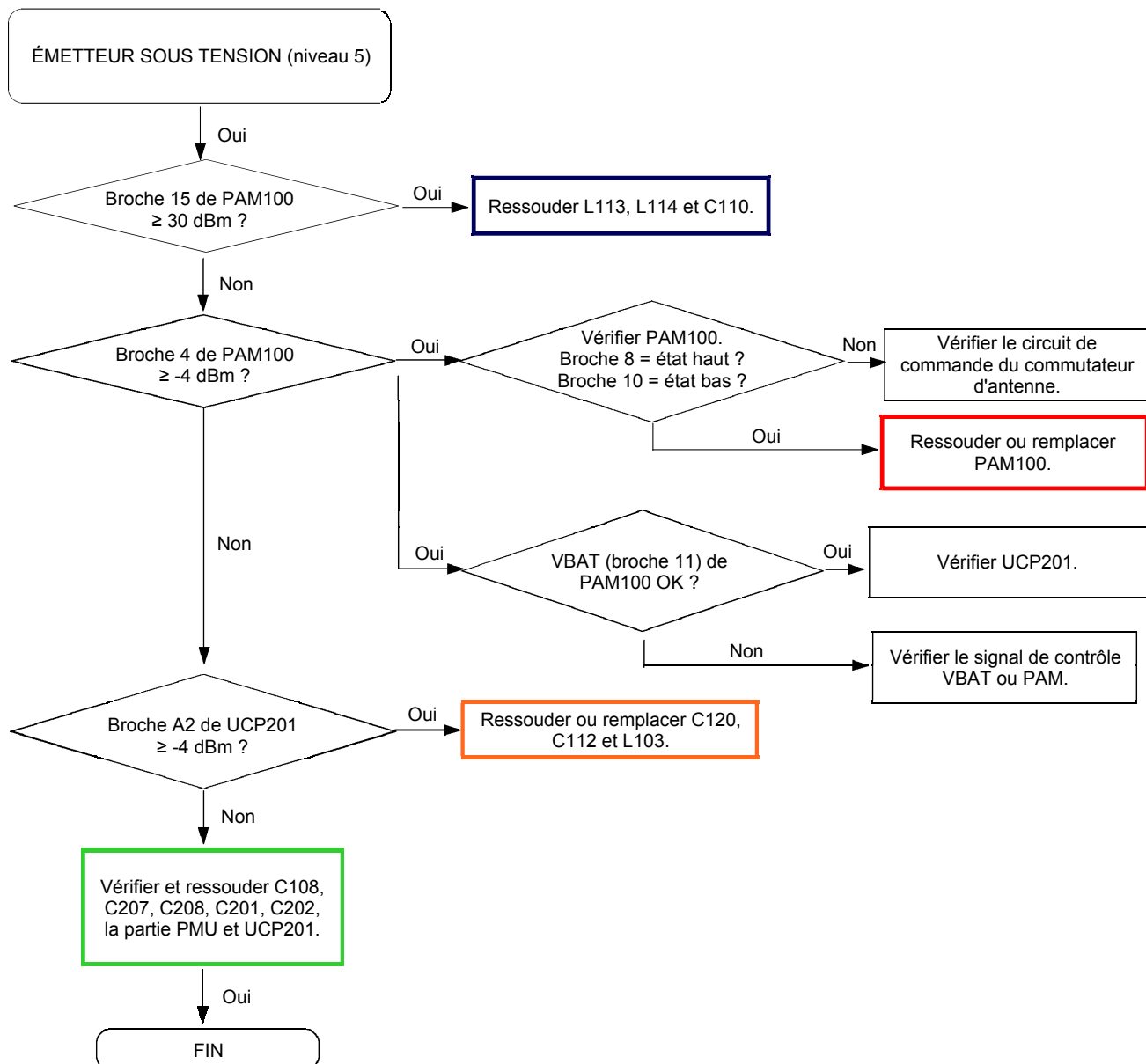


Circuit de commande du commutateur du module d'émission

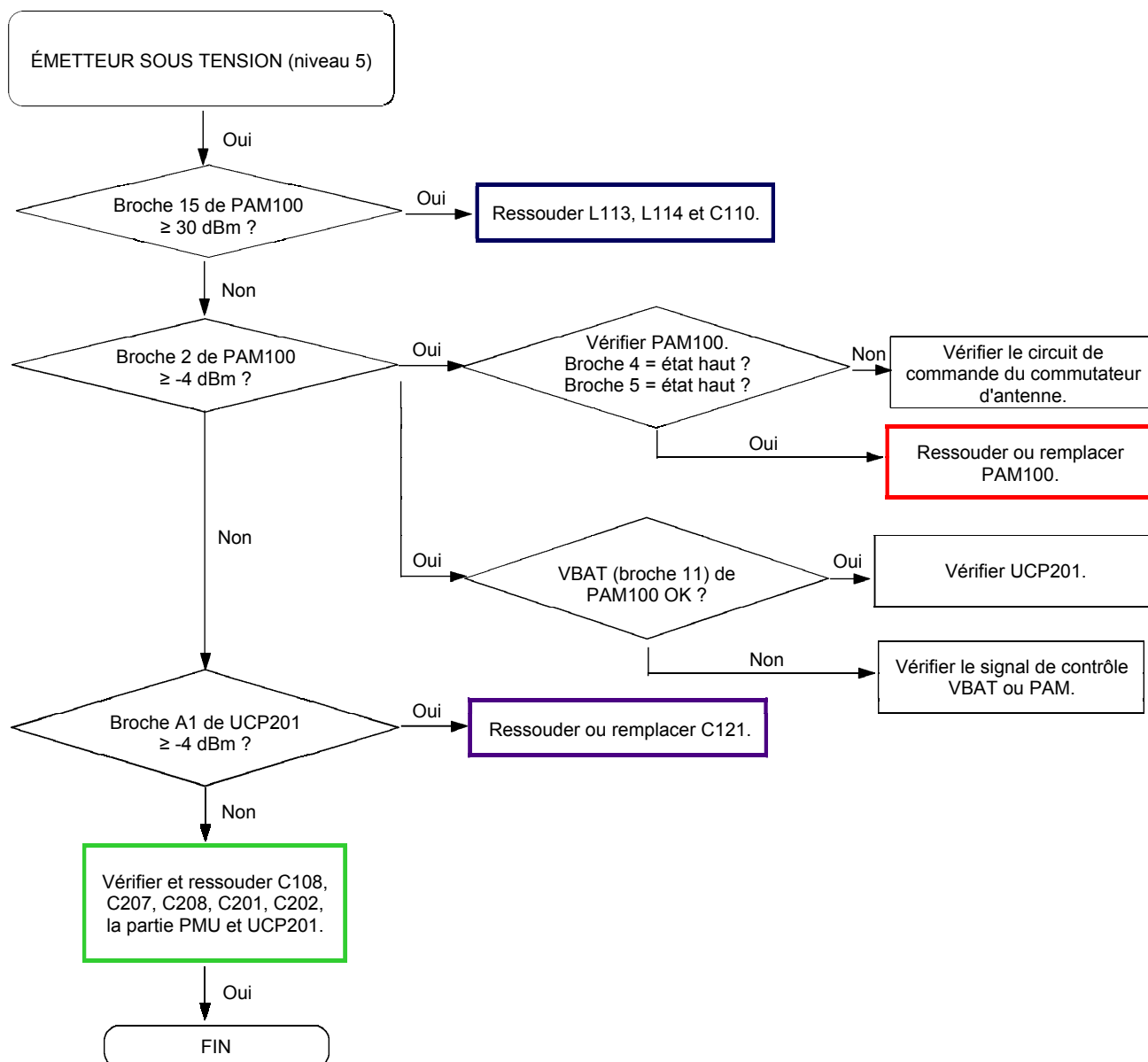




9-12. Émetteur GSM900

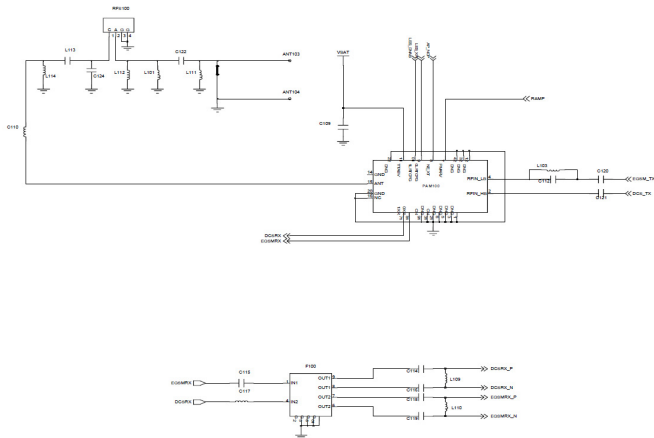


9-13. Emetteur DCS



| | MOD_STANBY | POH_PA | BAND_SEL | RL_SEL |
|---------|------------|--------|----------|--------|
| VERLE | BAS | - | - | - |
| BSIM_RX | HAUT | BAS | BAS | HAUT |
| DCS_RX | HAUT | BAS | HAUT | HAUT |
| BSIM_TX | HAUT | HAUT | BAS | - |
| DCS_TX | HAUT | HAUT | HAUT | - |

Circuit de commande du commutateur du module d'émission



Bloc RF

