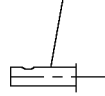
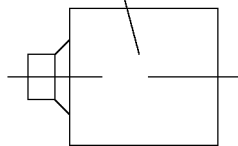


M 10

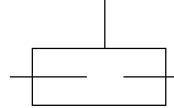
CENTRE CONTACT



BODY



INSULATOR



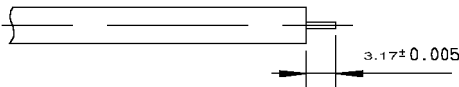
STRIPPING DIMENSIONS



Part number	Soldering tool	Trimmer	Soldering jig	Positioner 1	Positioner 2	Solder gauge	Dielectric recess gauge	Dielectric recess tool	Dielectric insert tool + plunger
R125 052 000 R125 052 002 R125 052 500	R282 051 000	R282 063 000	R282 740 000	R282 744 220	R282 744 060	R282 862 060	R282 914 000		R282 730 040
R125 055 000 R125 055 002 R125 055 500	R282 053 000	R282 067 000			R282 744 061				
R125 222 000	R282 051 000	R282 063 000			R282 744 010				
R125 225 000 R125 251 000	R282 053 000	R282 067 000			R282 744 011		R282 914 010	R282 915 010	R282 730 043
R125 252 000	R282 051 000	R282 063 000			R282 744 010				
R125 255 000	R282 053 000	R282 067 000			R282 744 011				
R125 256 000	R282 051 000	R282 063 000			R282 744 010				
R125 325 000	R282 053 000	R282 067 000			R282 744 011				
R125 326 000	R282 051 000	R282 063 000			R282 744 010				

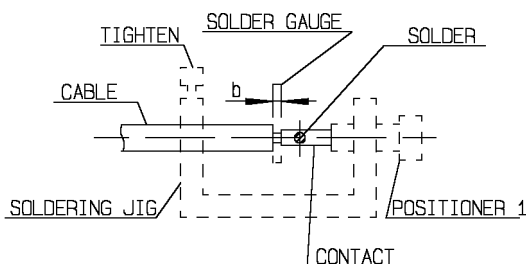
1

- Take the tool kit : R282 120 010.
- Strip the dielectric of the cable.
- Clean the cable.



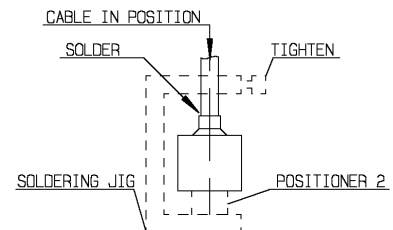
2

- Screw the positioner (1) onto the soldering jig.
- Slide contact into positioner.
- Insert solder gauge between contact and cable.
- Tighten and solder the contact.



3

- After cooling remove cable assembly from the jig.
- Screw positioner (2) into the connector.
- Slide cable into the connector until it bottoms against positioner.
- Tighten.
- Put 3 rings of solder around the cable and solder.



4

- After cooling remove cable assembly from the jig .
- Screw positioner cut.
- Cut the dielectric flush to clamp braid sleeve.
- Screw female dielectric insert tool onto connector and insert insulator with the dielectric plunger.

