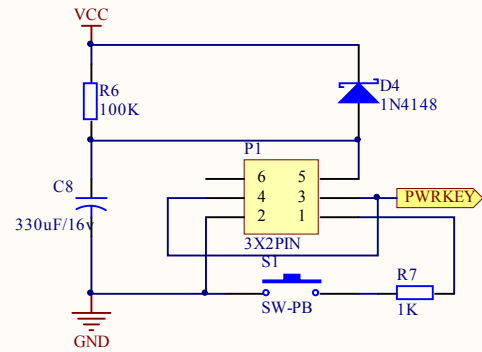
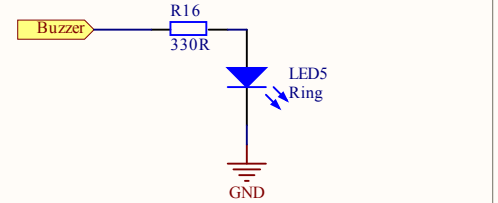


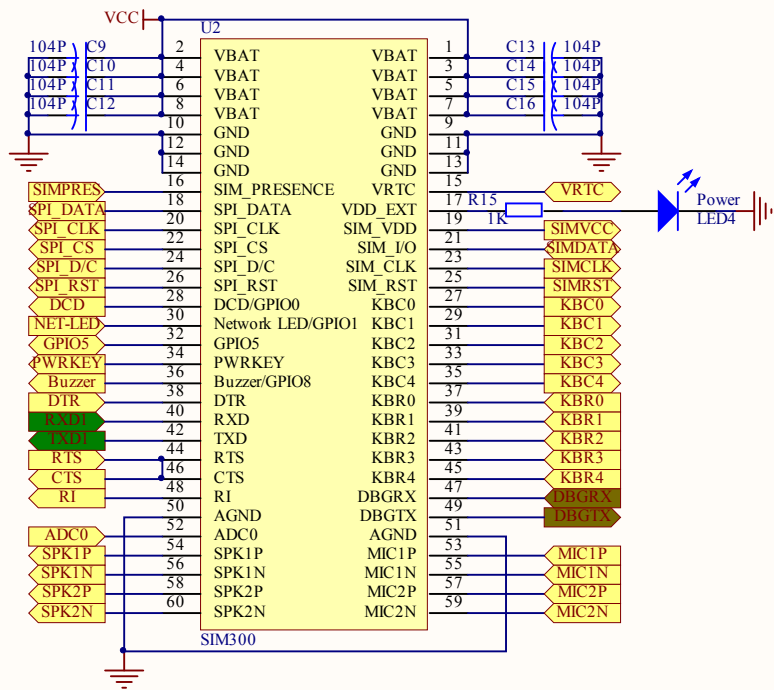
电源模块



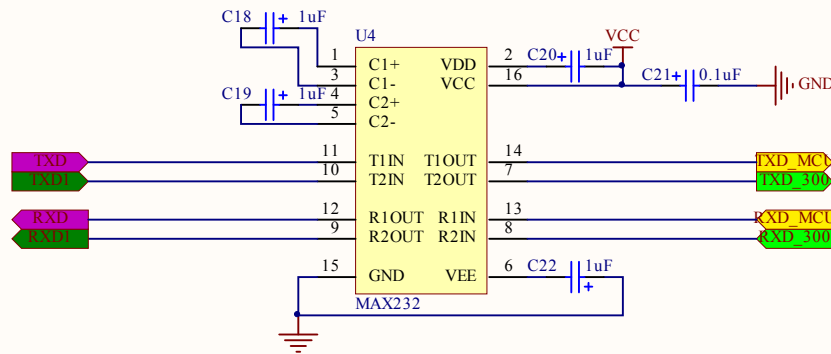
启动模块



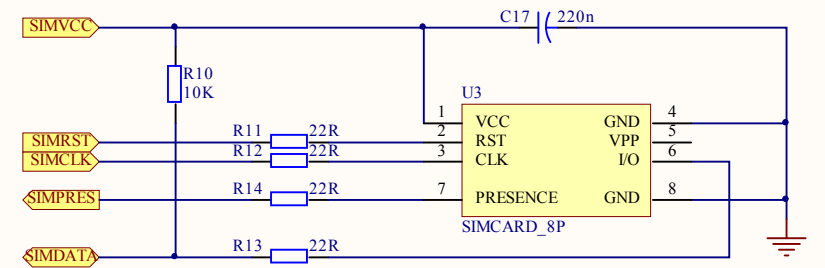
来电提示模块



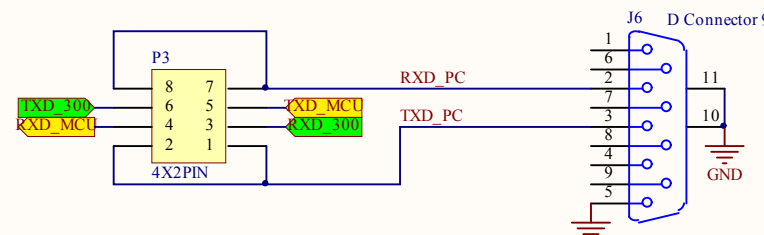
SIM800模块



232电平转换模块



SIM模块



端口选择模块

说明:

通讯端口接法:

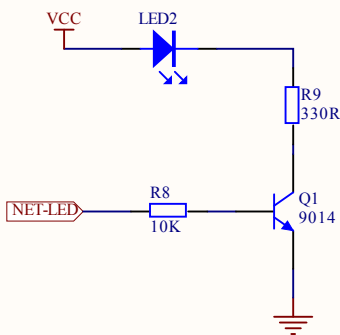
通讯方式	内部短接端口	外部连接端口
PC-SIM800	P3端口1-3、6-8	串口J6
MCU-SIM800 (TTL)	P3端口3-5、4-6	P2端口1、3、5
MCU-SIM800	P3端口1-3、6-8	串口J6
PC-MCU	P3端口2-4、5-7	串口J6 P2端口1、3、5
SIM800升级	P2端口1-2、3-4 P1端口2-4	P3端口4、5 P2端口5/6

来电提示模块: 有电话打进来时, 3秒亮, 3秒灭

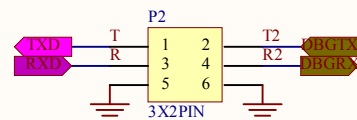
信号显示模块: 注册上时, 75ms亮, 3秒灭

自/手动模块: 自动时, 短接P1端口 3-5;

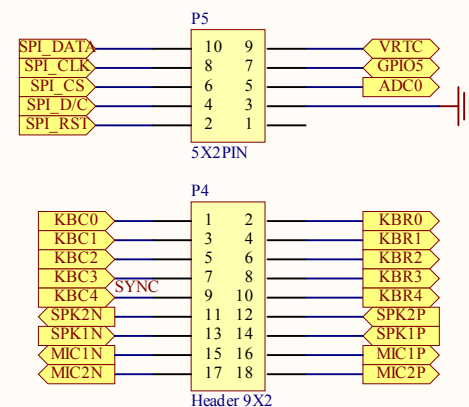
手动时, 短接P1端口 1-3



网络指示模块



TTL/升级选择模块



引脚模块

Title		
Size	Number	Revision
A3		
Date:	2010-11-7	Sheet of
File:	E:\SIM300 _\SIM300_AUTO.SchDoc	Drawn By: