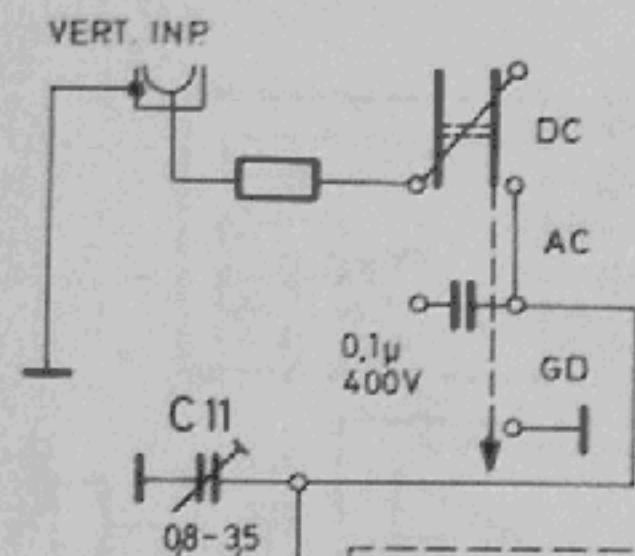
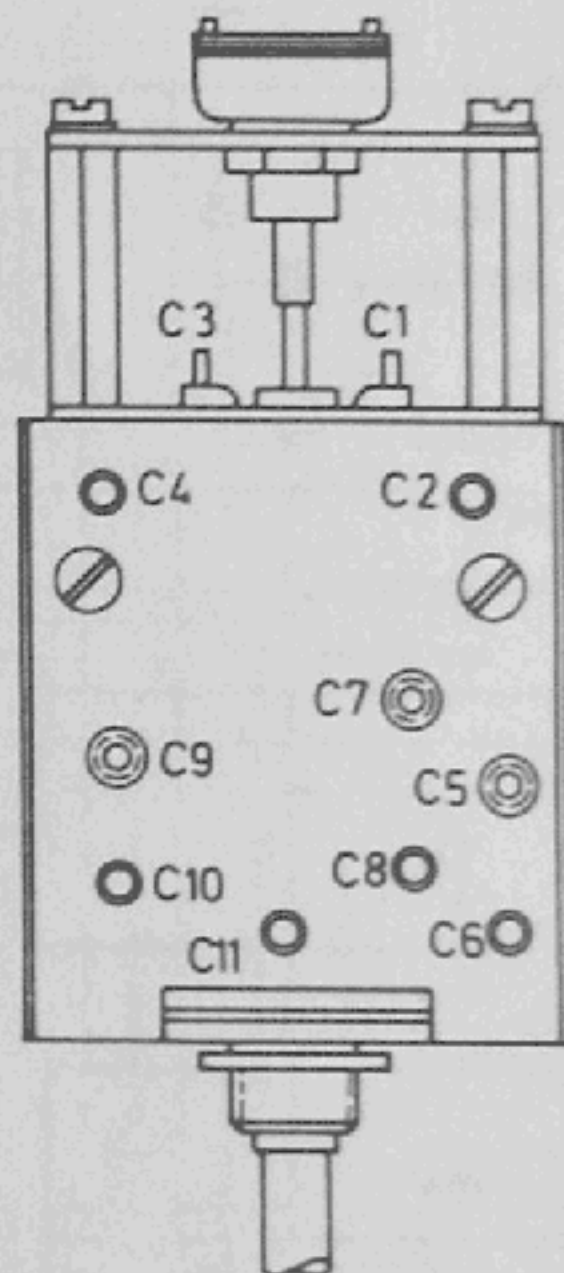
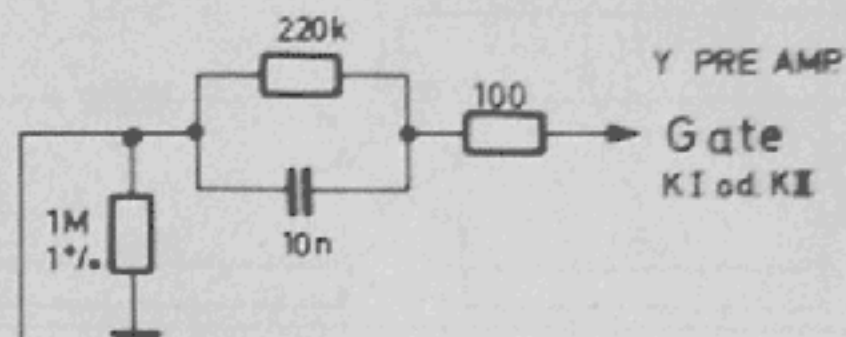
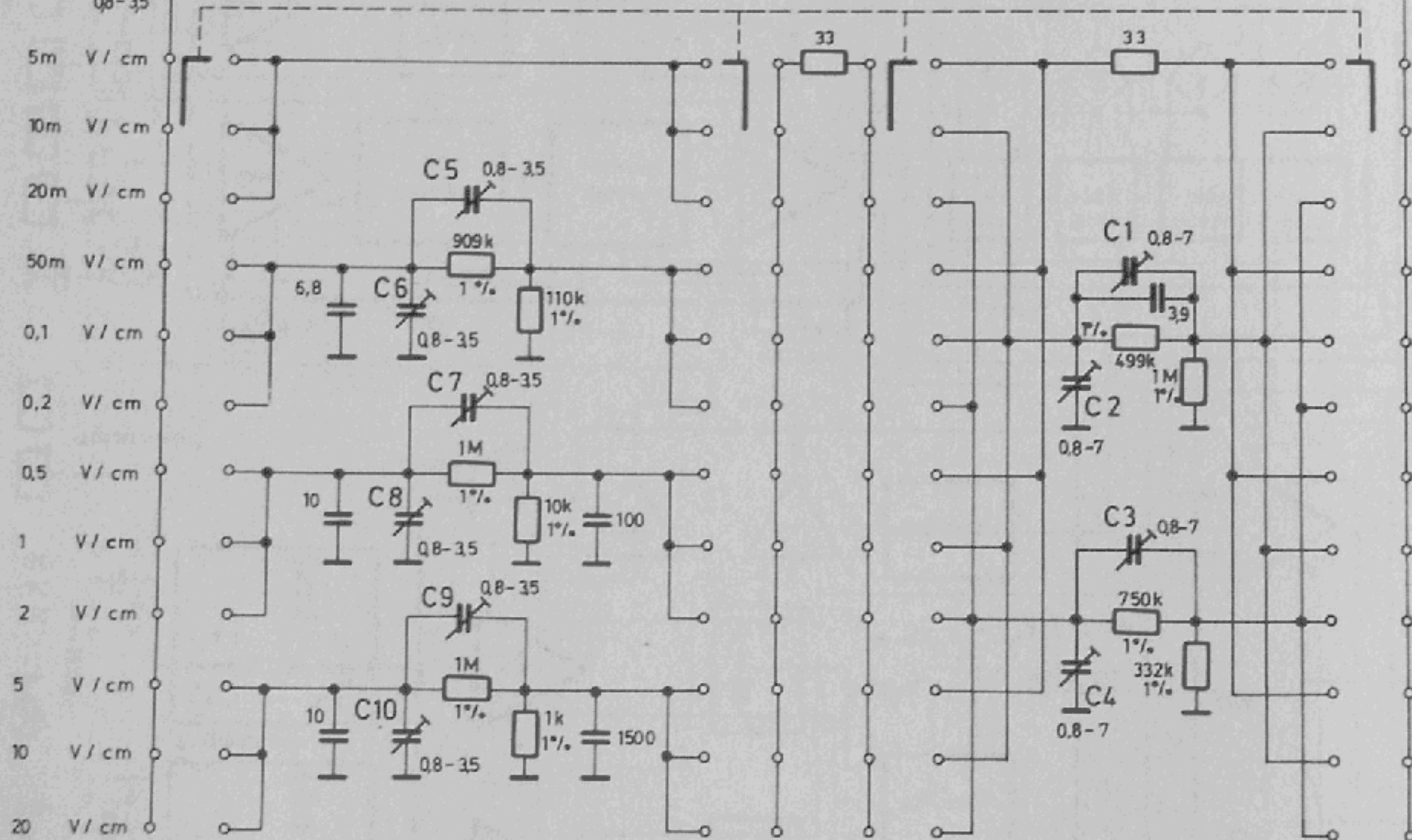


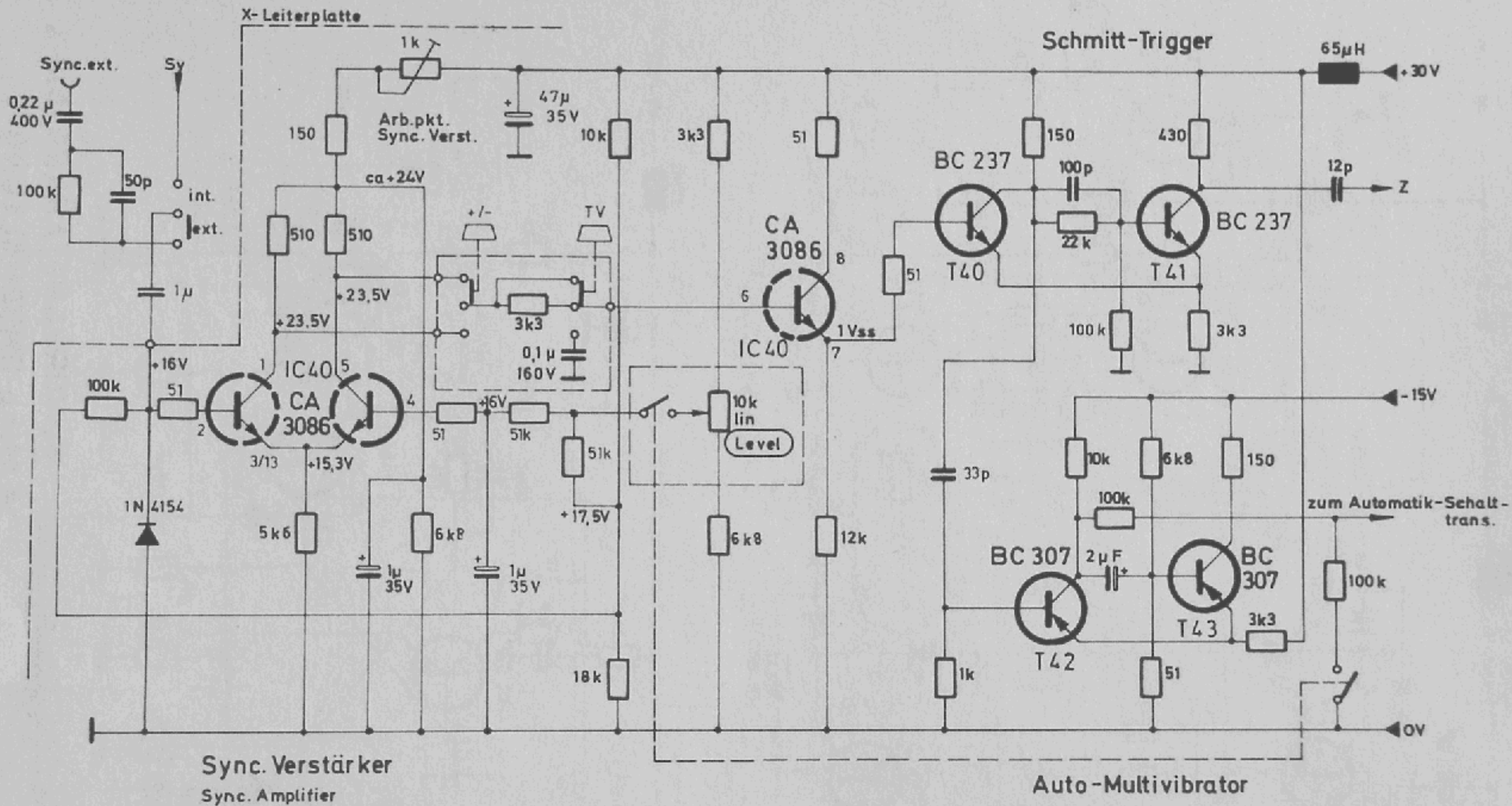
BLOCKSCHALTBILD 512-4

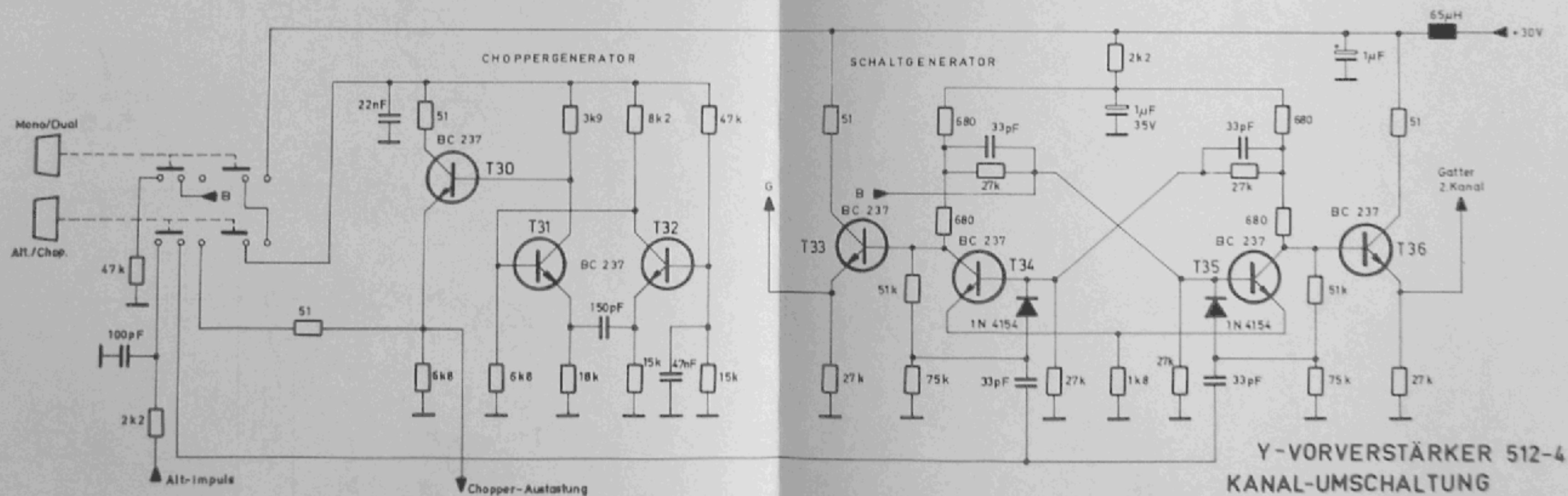
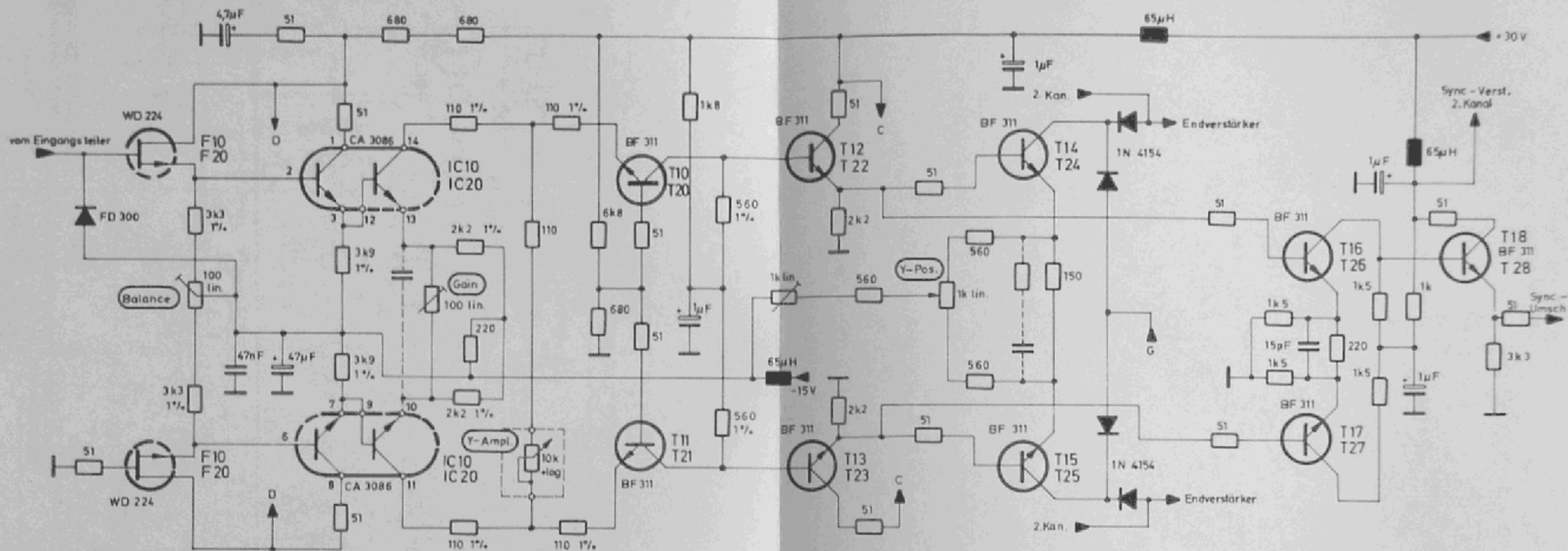


# EINGANGSTEILER 512-4 ATTENUATOR

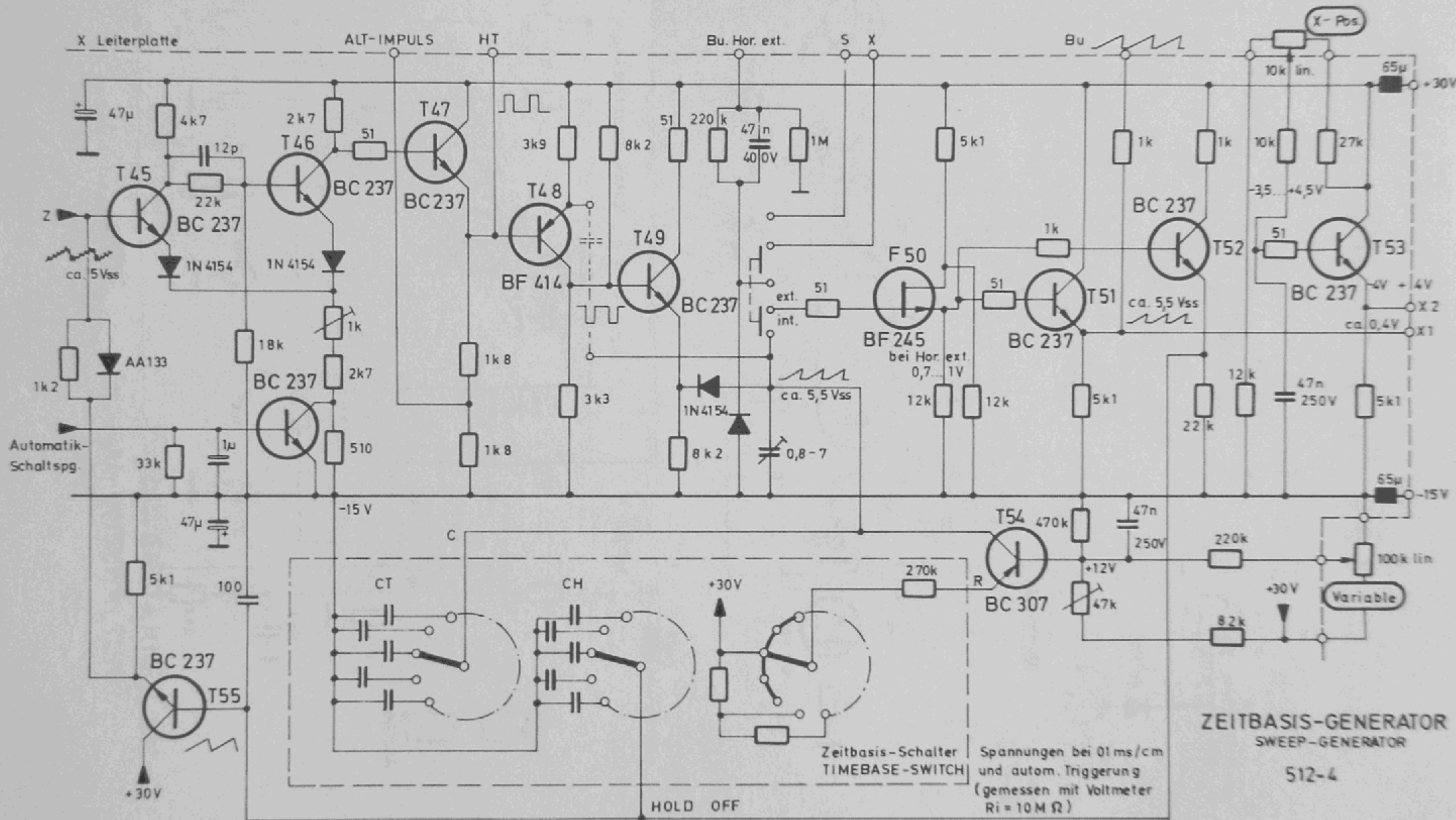




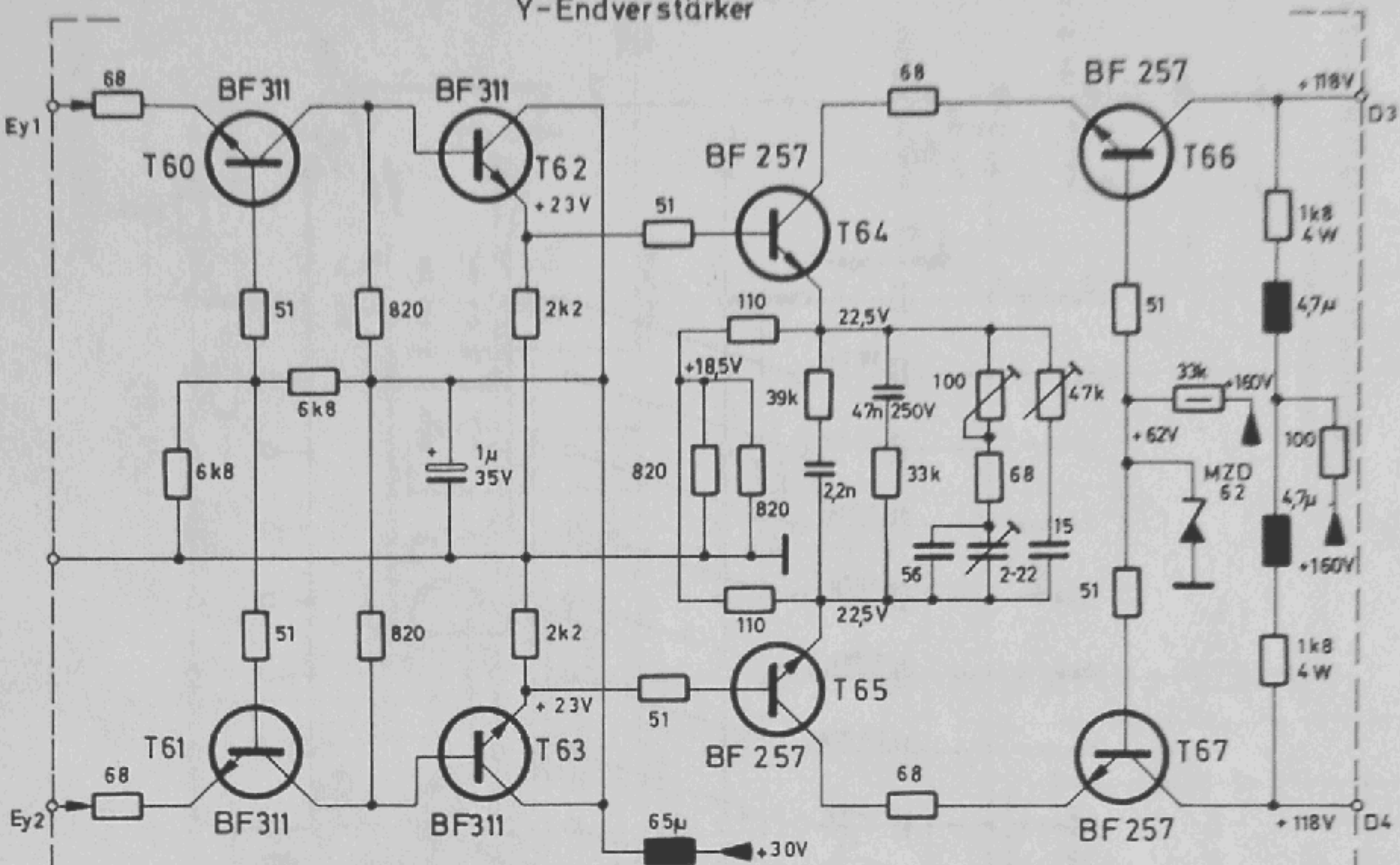






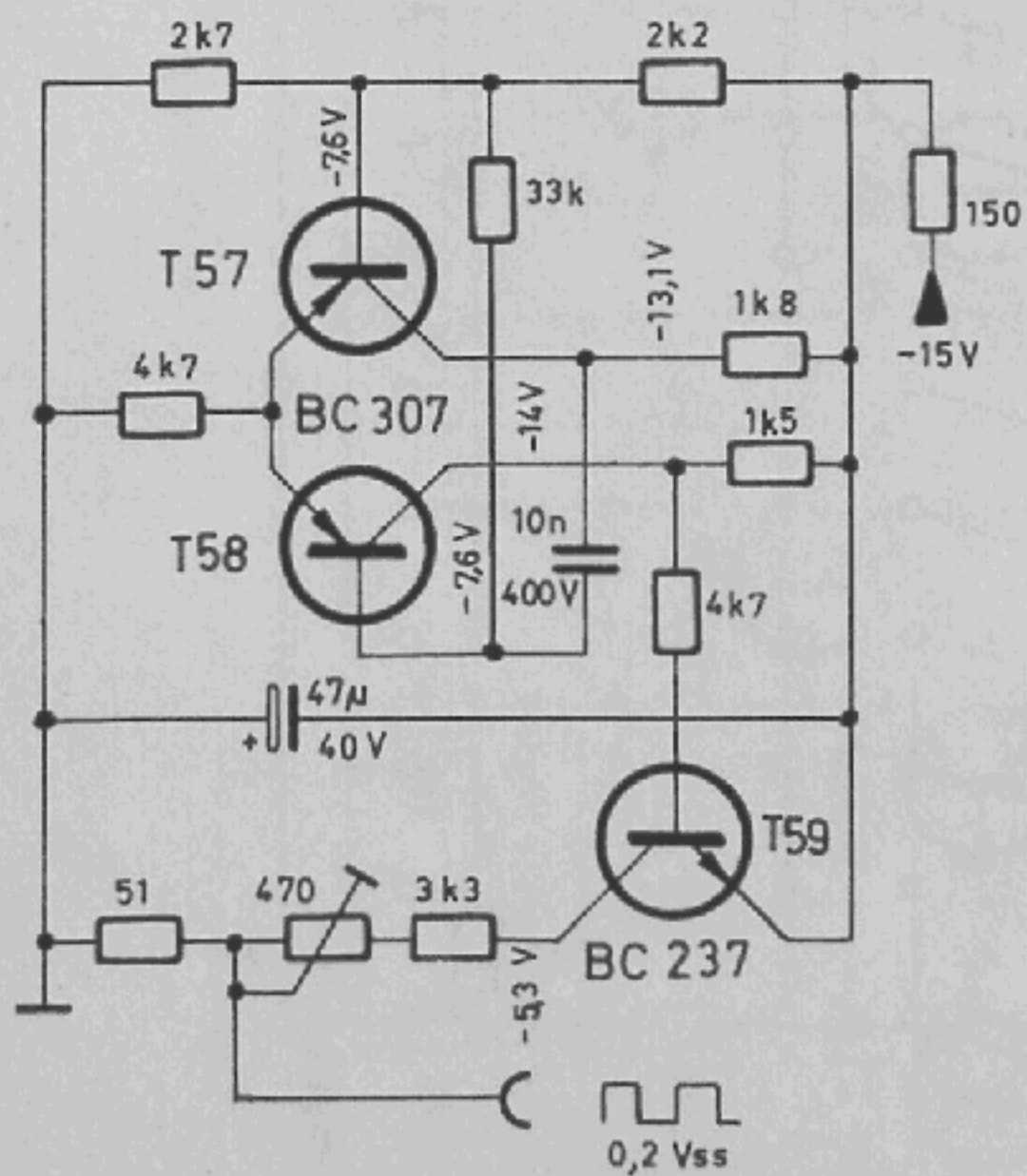


### Y-Endverstärker

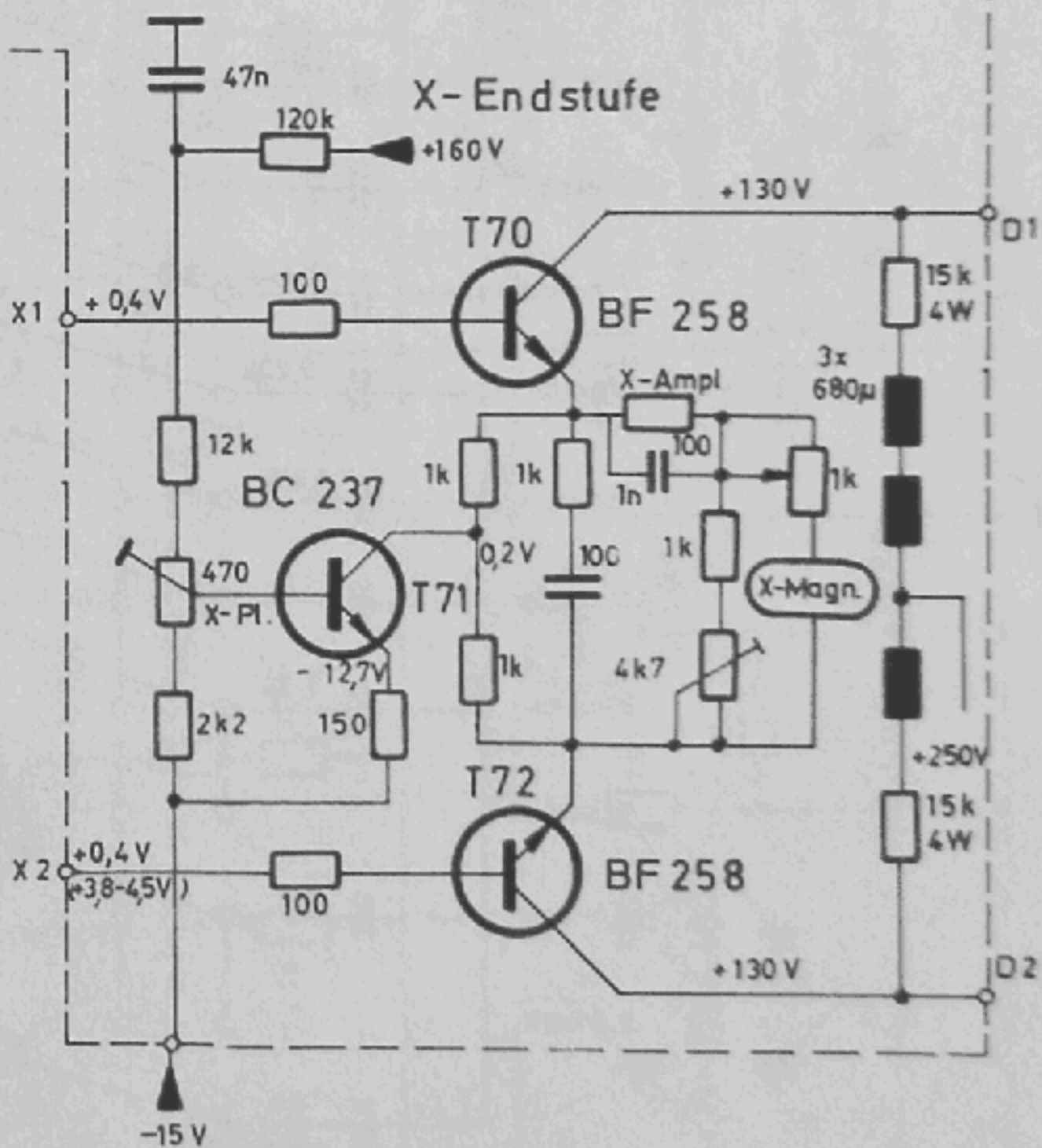


**Z** Leiterplatte

### Rechteck-Generator

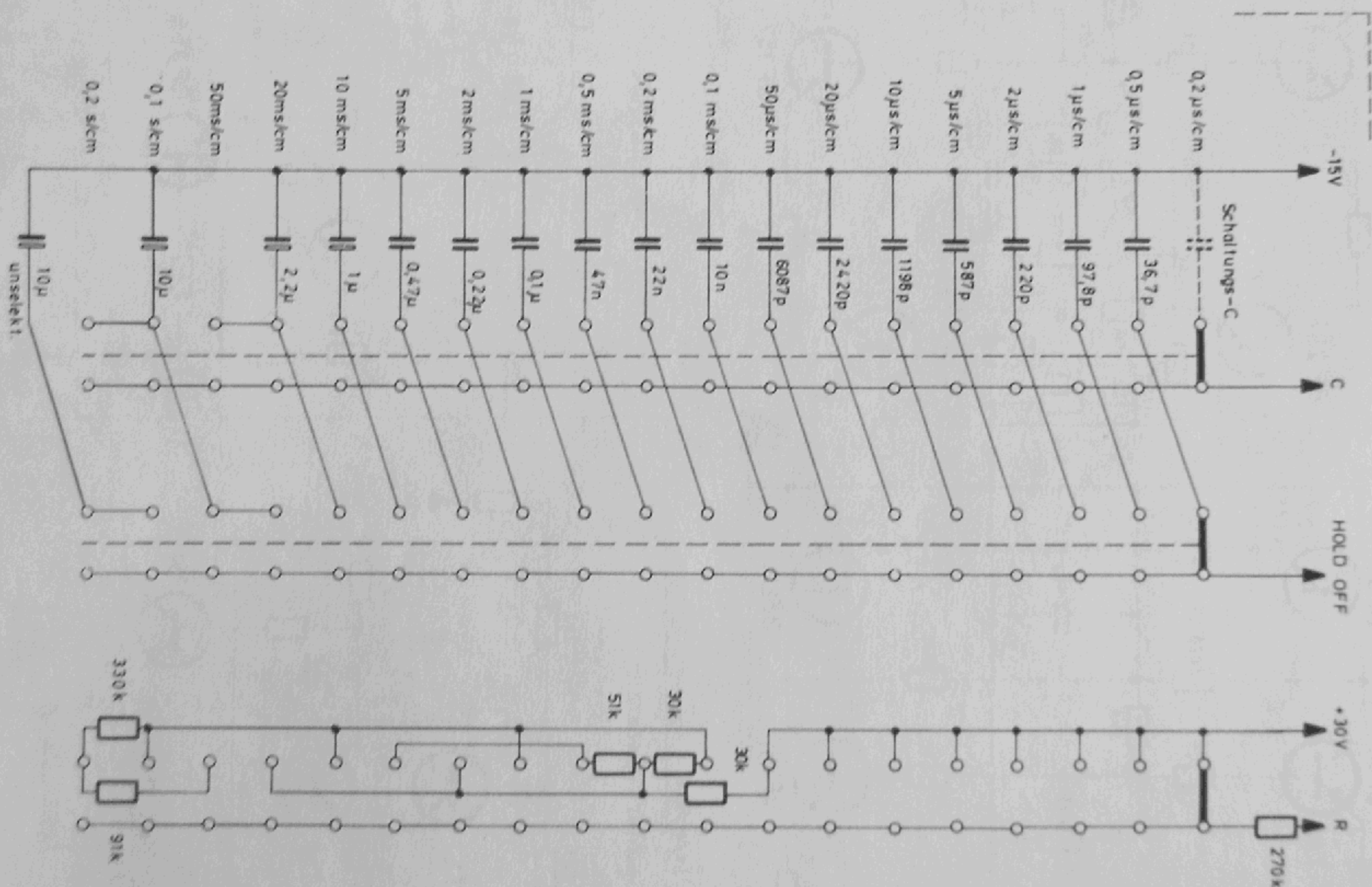


### X-Endstufe



ENDVERSTÄRKER 512-4  
OUTPUT AMPLIFIER









## 2 Schutzwicklungen

Wicklungsanfang und Wicklungsende von  
1150 V dürfen nicht verwechselt werden

110 V

485 Wd  
0,33 #

110 V

485 Wd  
0,33 #

grau  
20V  
96 Wd  
0,33 #  
grau

weiß  
38V  
183 Wd  
0,33 #  
weiß

grün  
170V  
816 Wd  
0,16 #  
grün

blau  
100V  
480 Wd  
0,12 #  
blau

Isolation  
für 2000 V

gelb  
105 V  
500 Wd  
0,12 #  
gelb

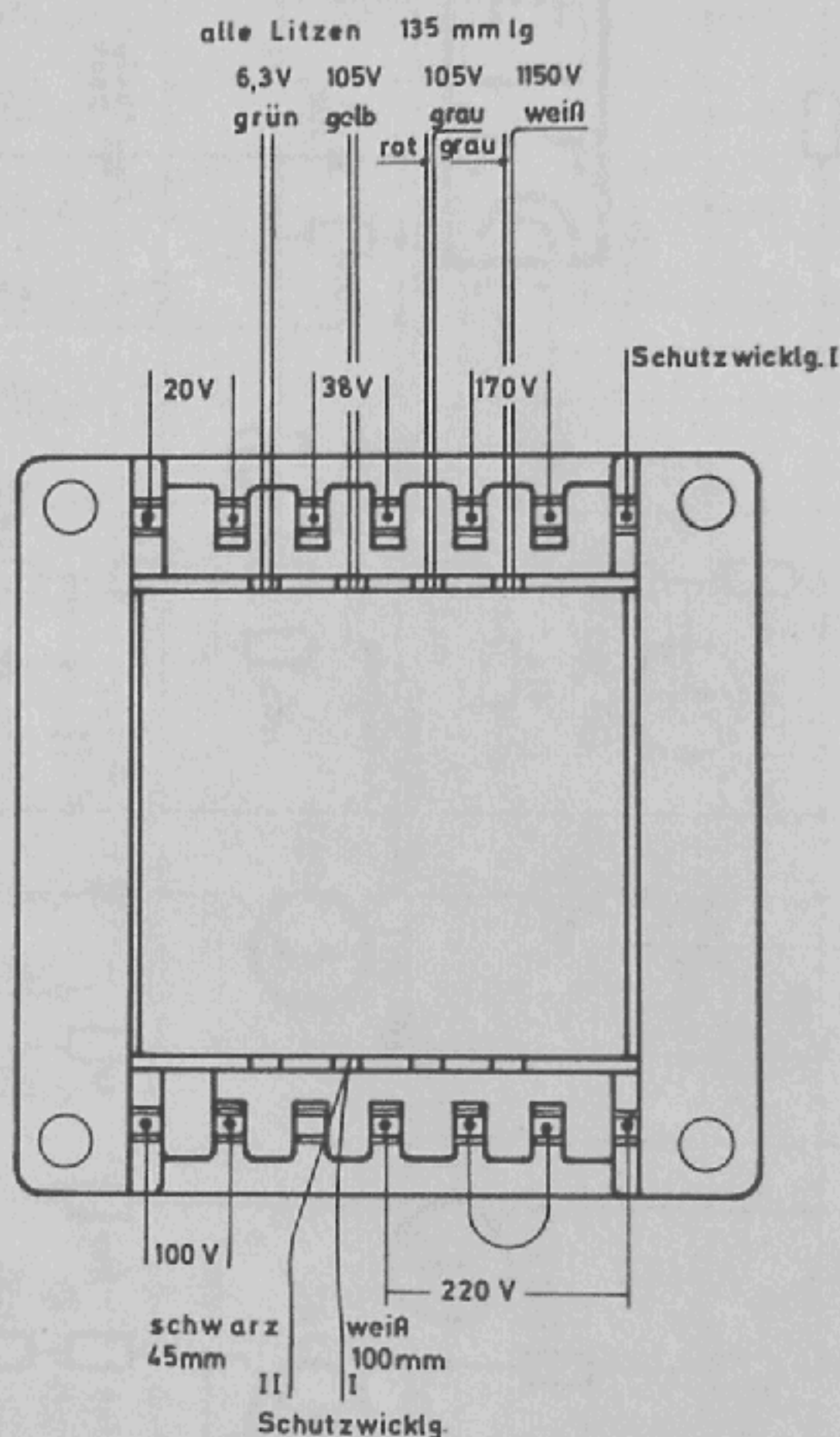
grün  
grün  
6,3V 31 Wd / 0,33 # / 0,5 A ~

Isolation  
für 2000V

weiß  
1150 V  
5450 Wd  
0,06 #

grau  
105V  
500 Wd  
0,12 #  
rot

alle Litzen 135 mm lg  
6,3V 105V 105V 1150V  
grün gelb grau weiß



TRAFO 512-4

