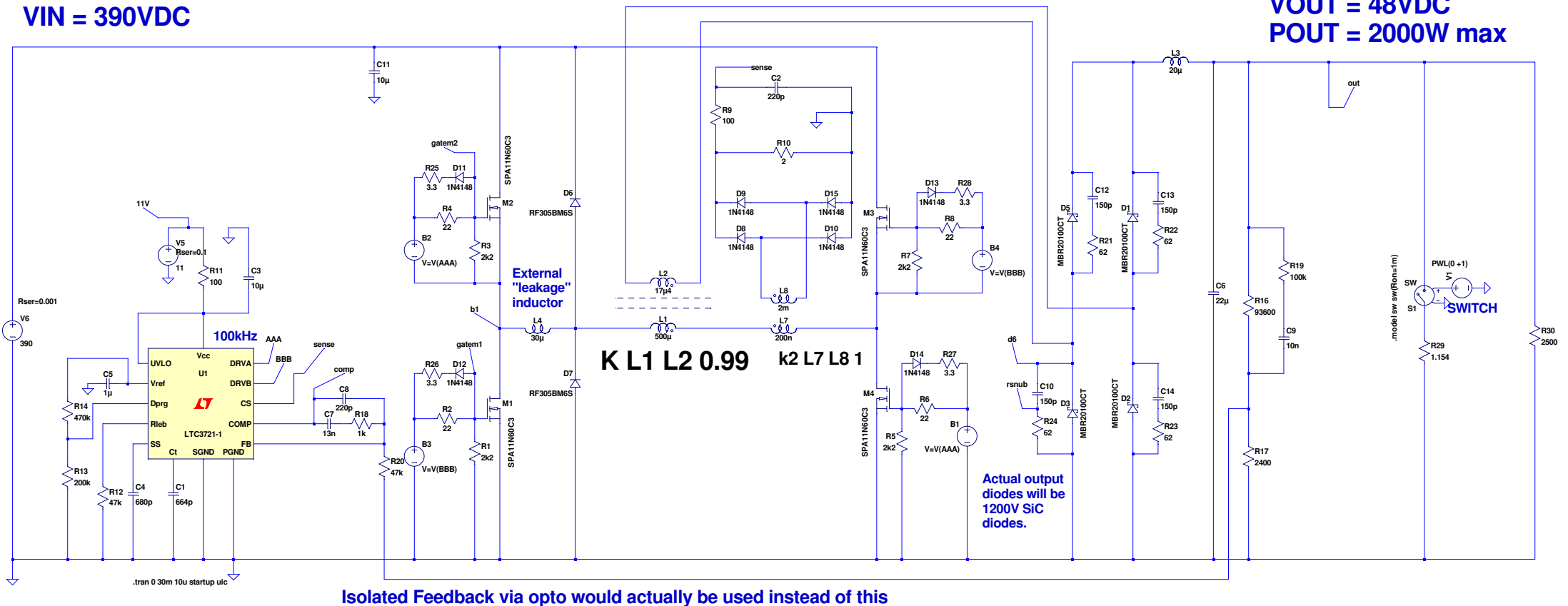


MODIFIED FULL BRIDGE SMPS, 2000W

VIN = 390VDC

VOUT = 48VDC
POUT = 2000W max



Isolated Feedback via opto would actually be used instead of this

--- C:\forum\FULL BRIDGE_WITH BIG LEAKAGE\Modified Full Bridge SMPS.asc ---