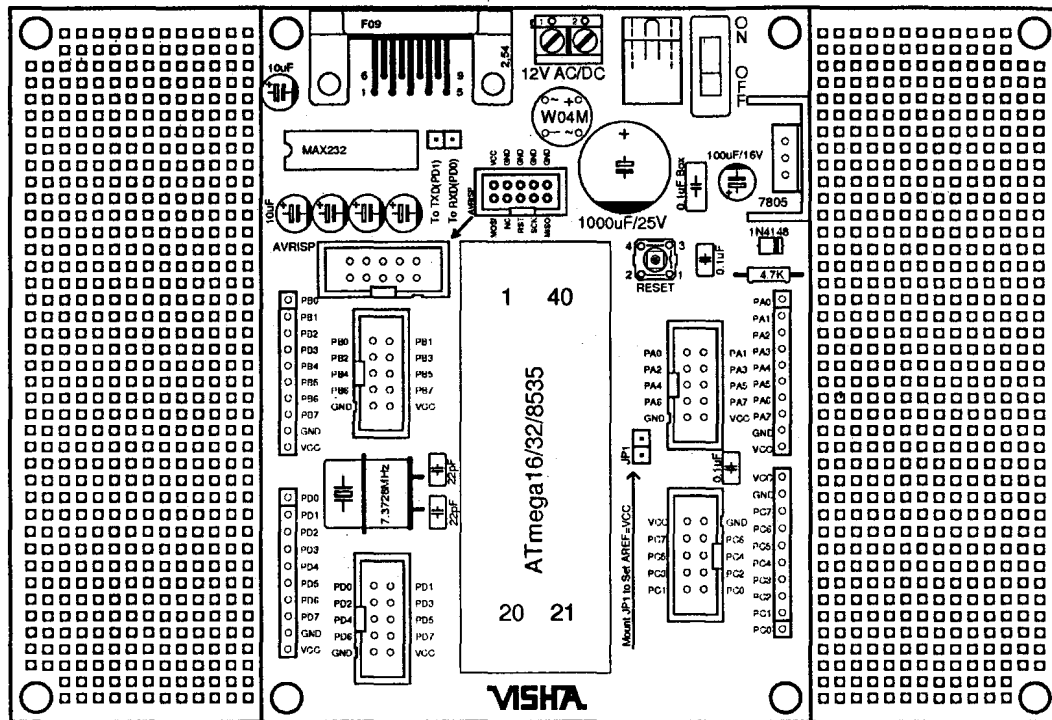


ATMEL ATmega 16 / 32/8535 GENERAL PURPOSE PCB - [K245]



Simple development platform for the most popular 40 pin DIP version of the AVR series of Microcontrollers is well suited for simple student projects or proof of concept experiments

Component List

Parts	Qty	Notes:
ZIF Socket or IC Base (40 Pin DIP)	1	<ul style="list-style-type: none"> The Microcontroller is not included in the kit, please specify which part you want: ATmega16 ATmega16L ATmega32 ATmega32L ATmega8535 ATmega8535L
10 Pin Box Headers	5	
10 Pin Relimate Connectors	4	
1 x2 Pin Berg Strip	2	
2 Pin Jumpers\	1	
DE-9 Female Connector	1	
MAX232 (16 Pin DIP)	1	<ul style="list-style-type: none"> Above ICs are also available preprogrammed with a bootloader MegaLoad 8.0 (yvwww.micrilliY.1corn)
10uF / 50V Electrolytic Capacitors	5	
3.6864/ 7.3728 /11.0592/ 14.7456 MHz Crystal	1	
22pF Disc Capacitor	2	
Tact Switch	1	
1N4148 Diode	1	
4.7K Carbon Film Resistor	1	<ul style="list-style-type: none"> Standard kit contains a 40 pin IC Base, please specify if you want a ZIF socket.
2k2 Carbon Film Resistor	1	
3mm Led	1	
Slide Switch (SPDT)	1	
DC Jack	1	
Terminal Block (508/2 Way)	1	
W04M Bridge Rectifier	1	<ul style="list-style-type: none"> Select Crystal as per your application: 0-8MHz for ATmega16/32/8535L 0-16MHz for ATmega16/32/8535
0.1 uF Box Capacitor	1	
0.1 uF Disc Capacitors	2	
1000uF / 25V Electrolytic Capacitor	1	
100uF / 16V Electrolytic Capacitor	1	
2 Way Crimped Jumper Wire	1	

Circuit Diagram

