

Great Company Great People

XCUTE 125

Think New

ERRC *Eliminate, Reduce,
Raise, Create*

HDMI EDID DATA

EEPROM.EXE

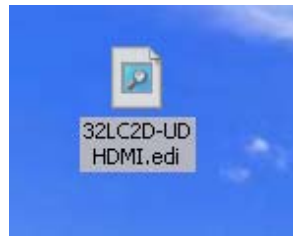
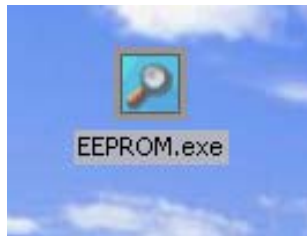
- 1. Update Tools
- 2. Program Settings
- 3. EDID Write

Download the EDID Update Files for the specific model to be updated

Files should include:

EEPROM.EXE Program used to write EDID Data to the set

EDID Data File (Example: 32LC2D-UD HDMI.edi)



Hardware Required :

① Download Jig



② Jig Interface Cable



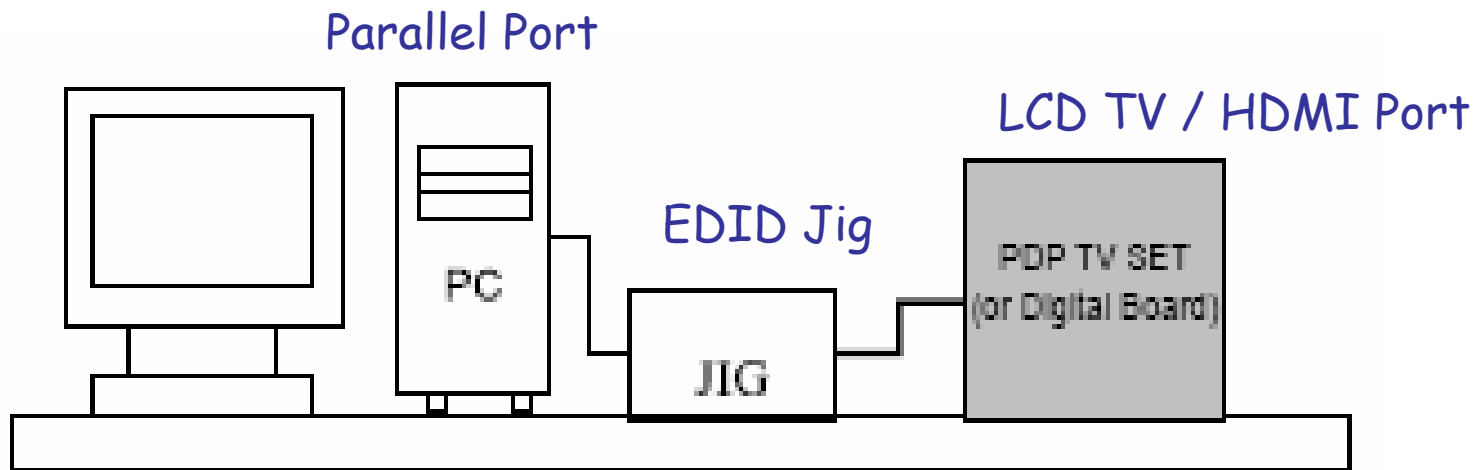
③ Service Remote Control



1) Signal Cable

- Ⓐ Dsub to DVI-A → for PC Analog EDID
- Ⓑ HDMI to DVI-D → for PC Digital EDID
- Ⓒ HDMI to HDMI → for HDMI EDID
- Ⓓ Dsub to Dsub → for PC Analog EDID

EDID Data Hardware connection Diagram



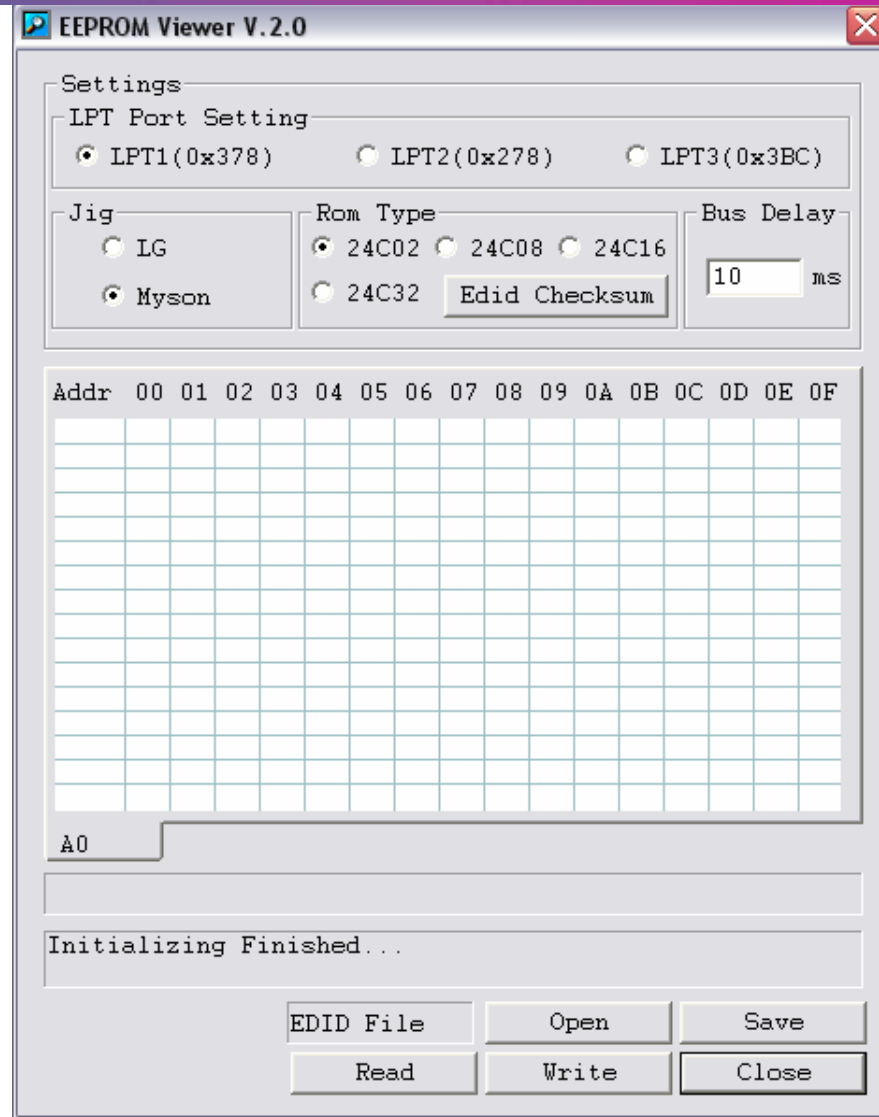
Parallel port
connection
to the PC



Connect HDMI Cable from
the Jig to the HDMI port
on the LCD TV Product

EEPROM Viewer V.2.0 Setup

- 1) Run EEPROM Viewer interface software program.
- 2) Set LPT Port to LPT1
- 3) Select Myson Jig
- 4) Select Rom Type 24C02
- 5) Select 10ms Bus Delay

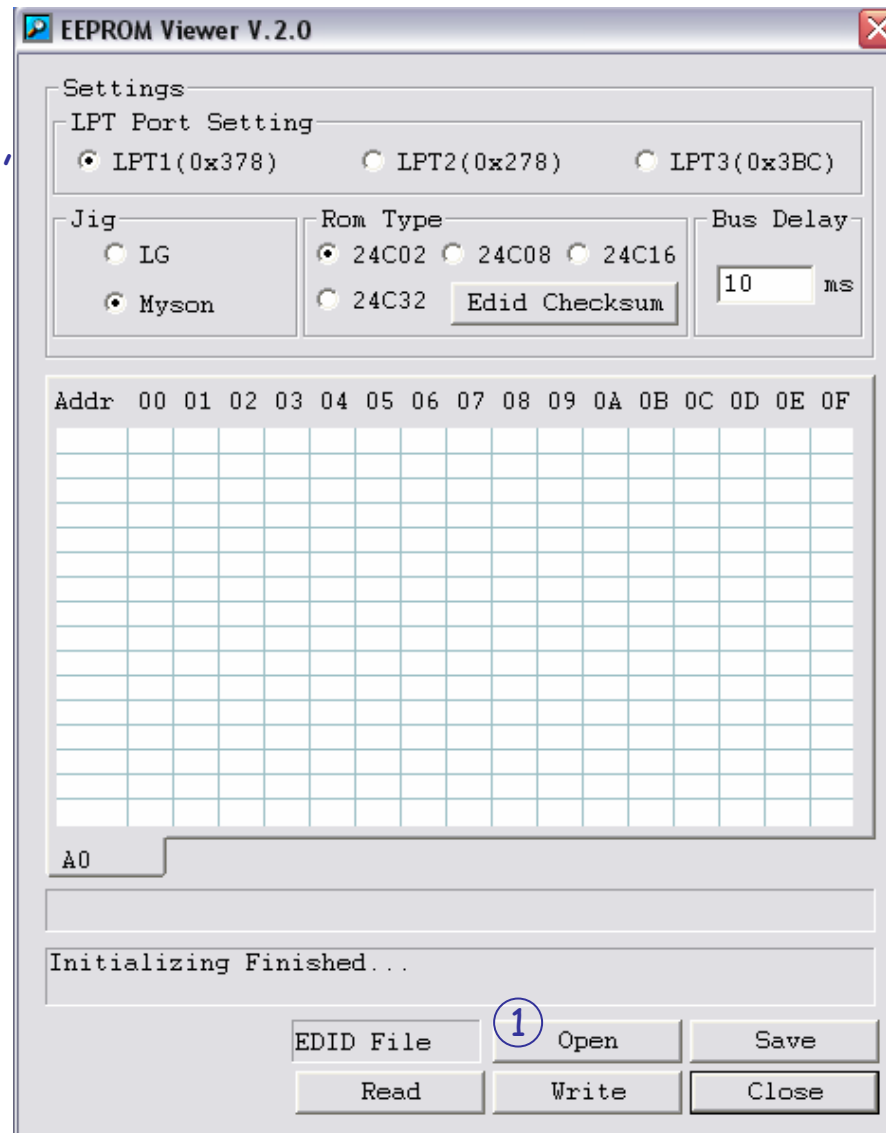


EEPROM Viewer V.2.0 Setup

After connection is established,
You must select the EDID data
file to upload to the unit.

Follow the steps below:

1) Select the Open box to
choose the file to be uploaded.



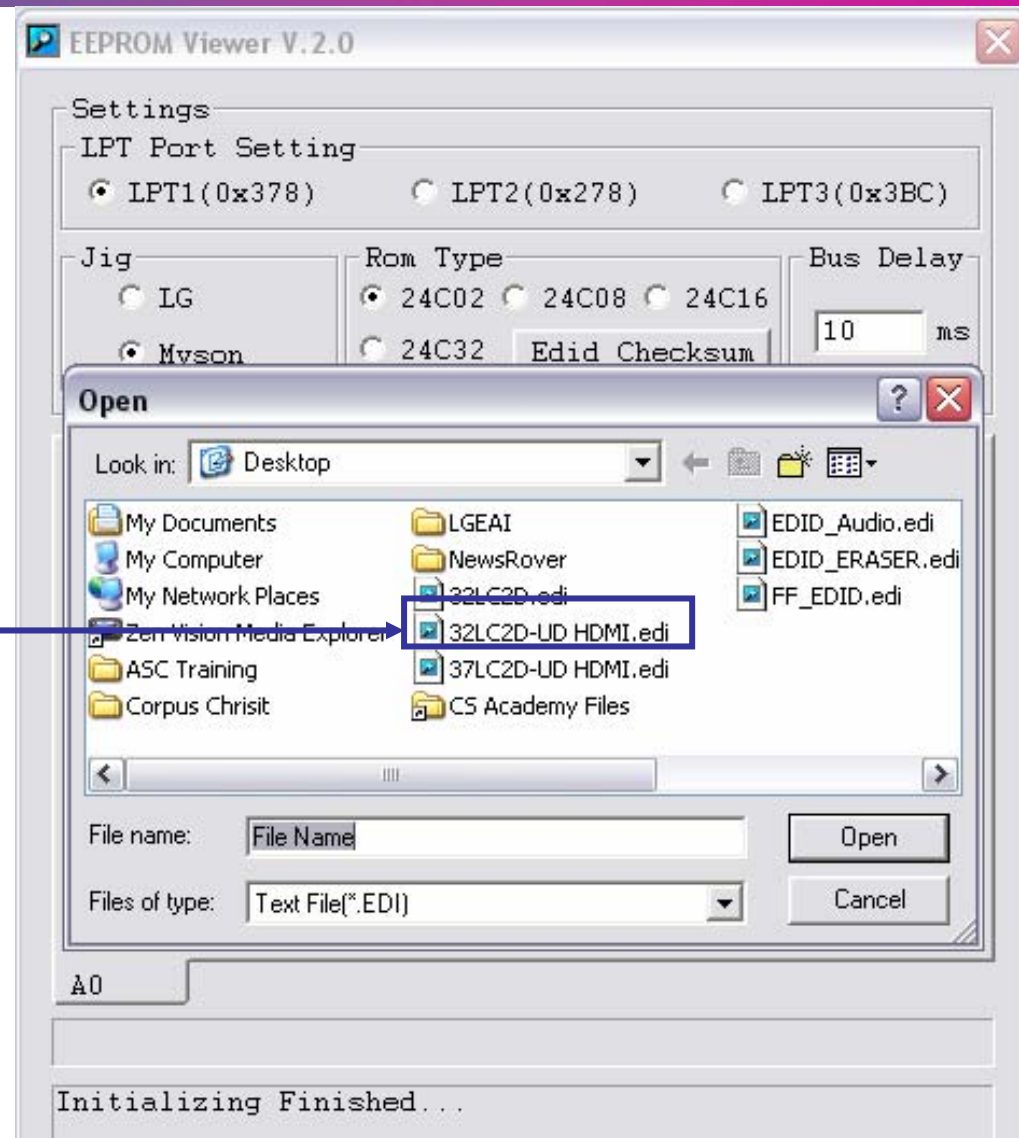
Select the correct EDID Data file to upload to the set

The correct file must be uploaded to the set to obtain the desired results.

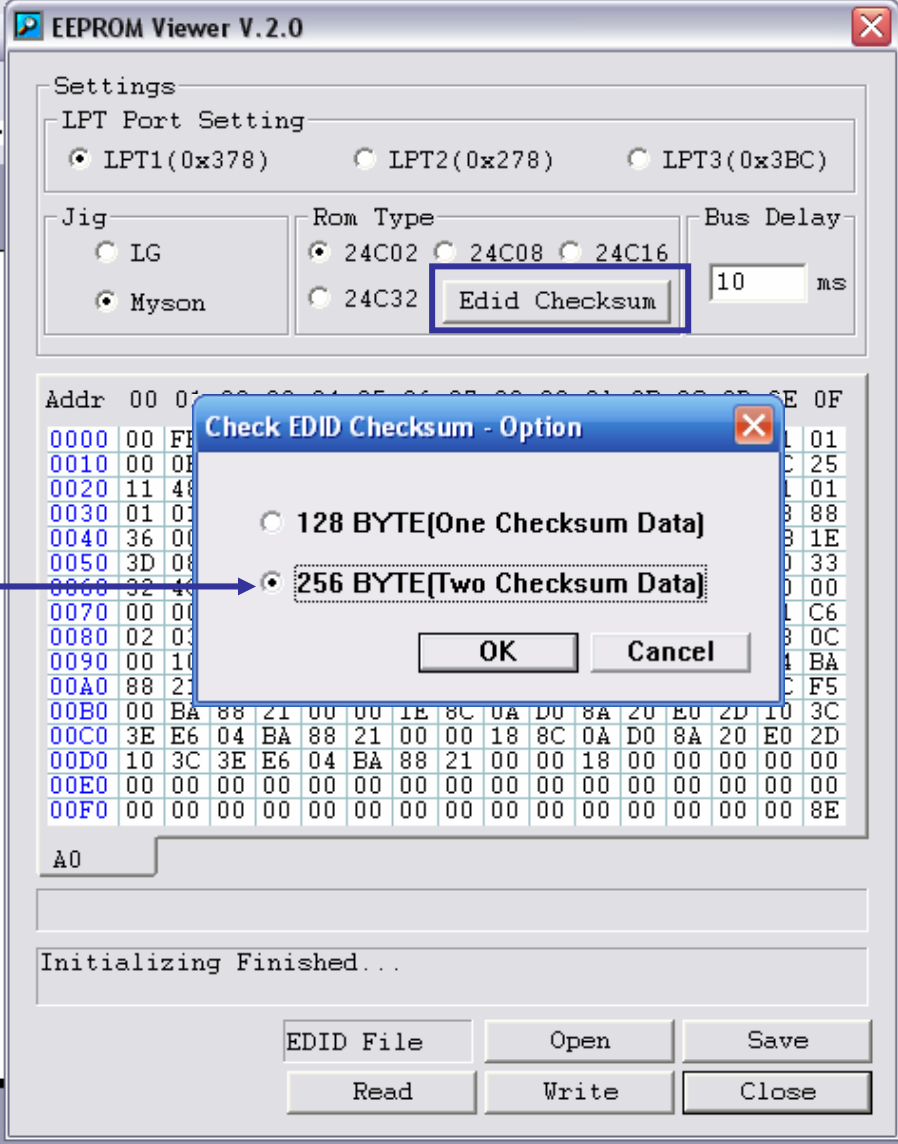
1) Select the EDID Data file provided by the factory.

In this example, We will choose the the file named 32LC2D-UD HDMI.edi

This EDID data file has a 256 byte checksum value. This is predetirmined for the type of download to be preformed

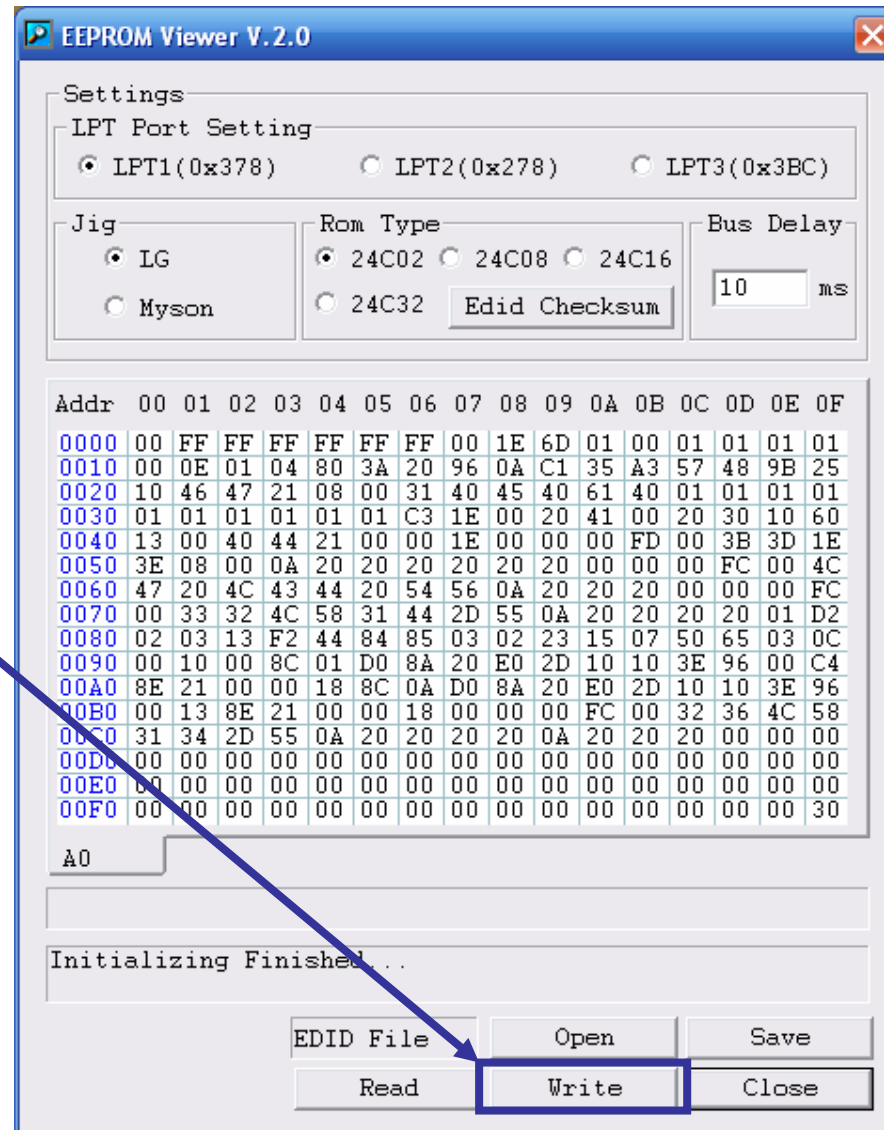


After selecting the EDID data file the hexadecimal values for the EEPROM Data addresses 0000 through 00FF will be seen in the address window.

[illegible]

Sending EDID Data to set

Move the mouse cursor over the Write button and click the mouse button to write the EDID Data to the set



Finished EDID Data download

As the data is being written to the EEPROM, the progress bar will move from left to right, indicating that the data is being sent to the TV set, and updating the EDID Data.

Upon completion of download to the set, the program will display the Finished message beneath the location of the progress bar.

