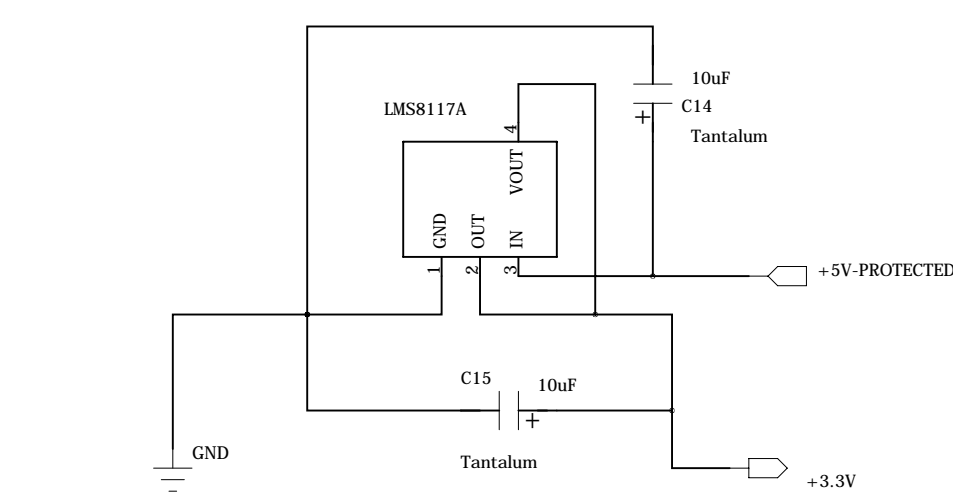
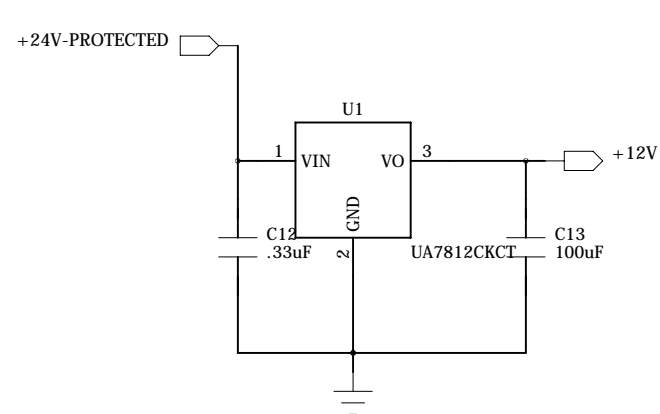


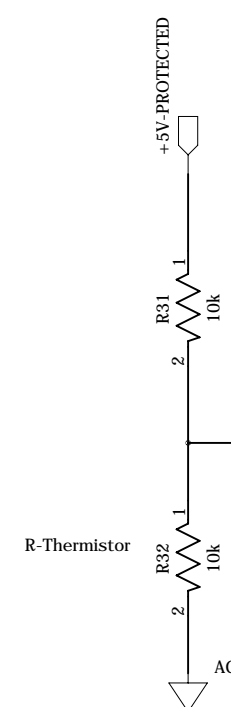
MAIN CIRCUIT



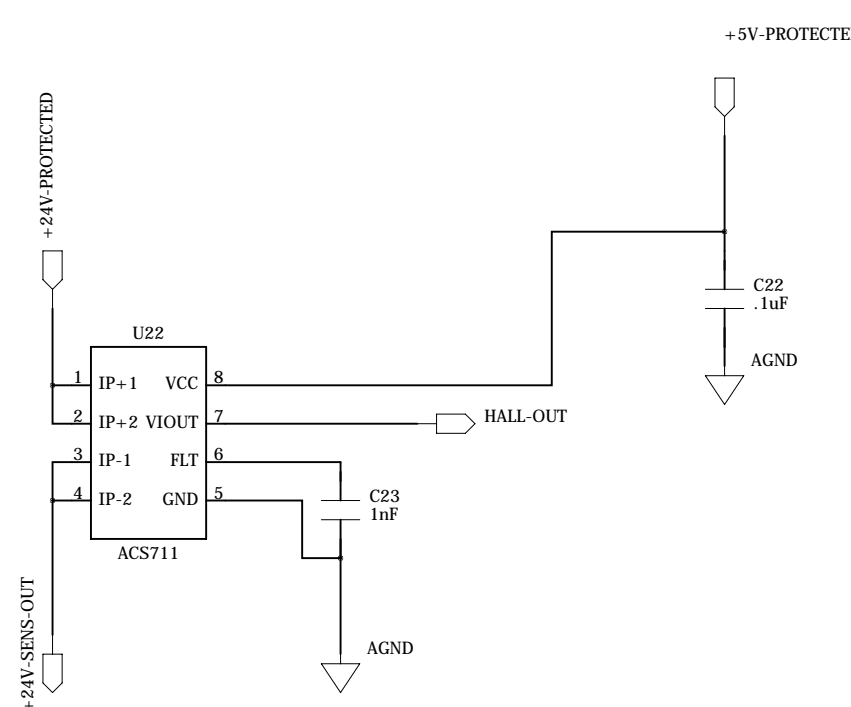
LDO (5V-3.3V)



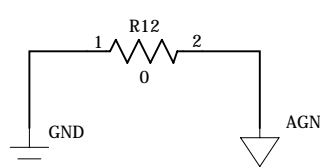
LDO (24V-12V)



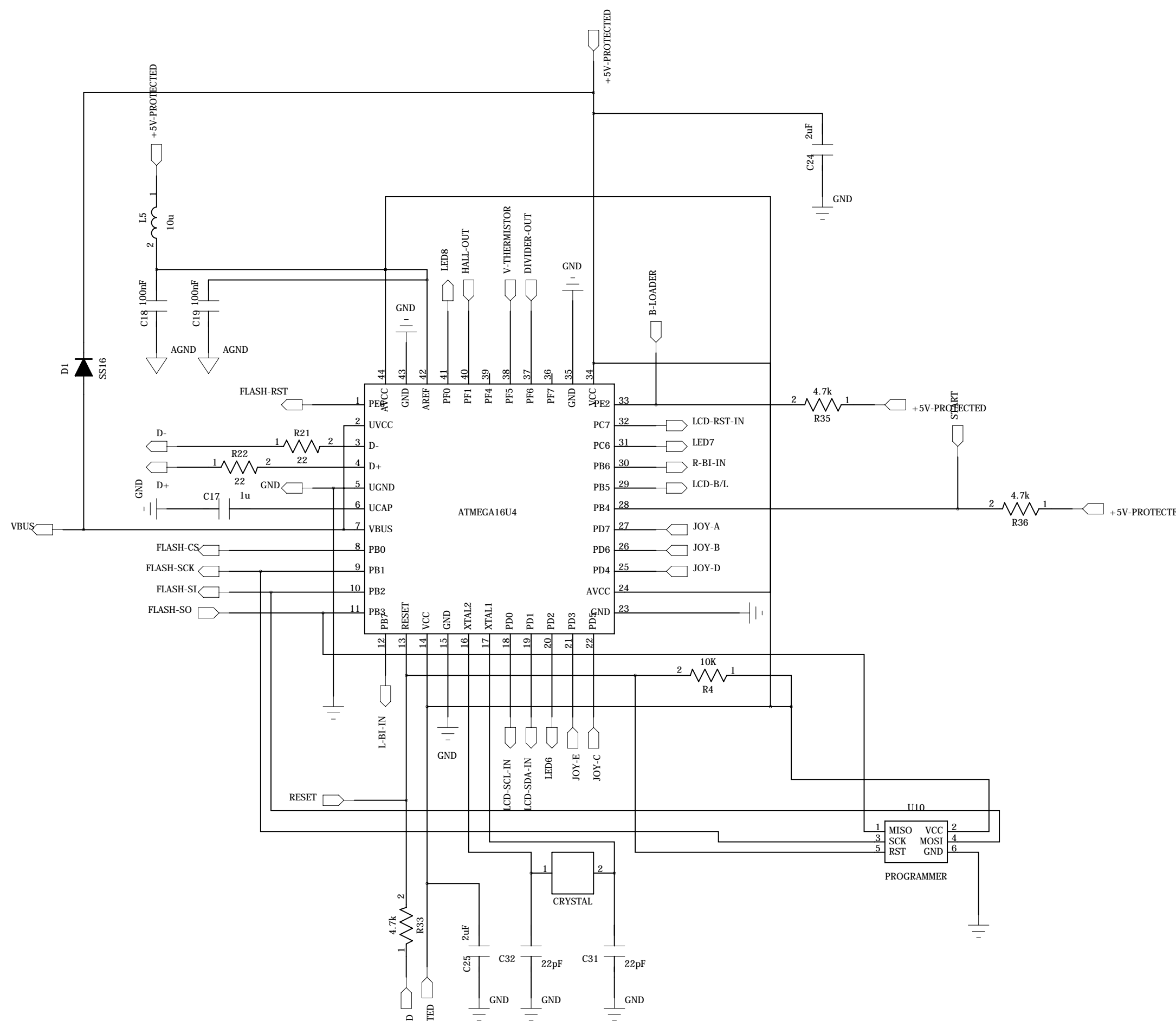
THERMISTOR CIRCUIT



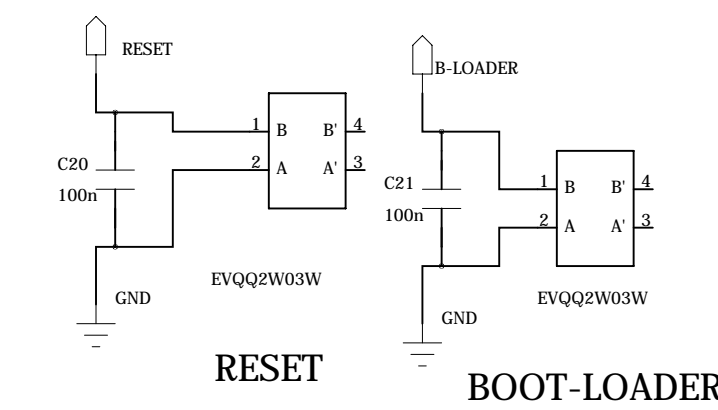
CURRENT SENSOR CIRCUIT



GROUND

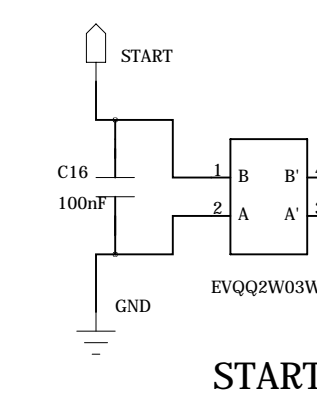


MIRCO-CONTROLLER

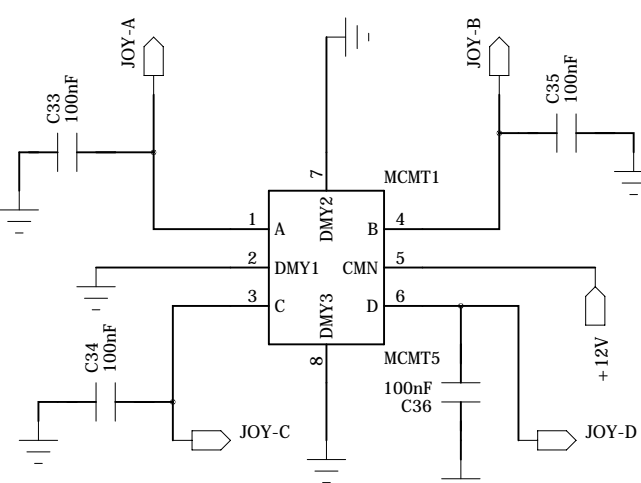


RESET

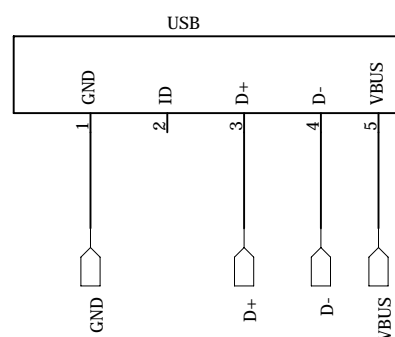
BOOT-LOADER



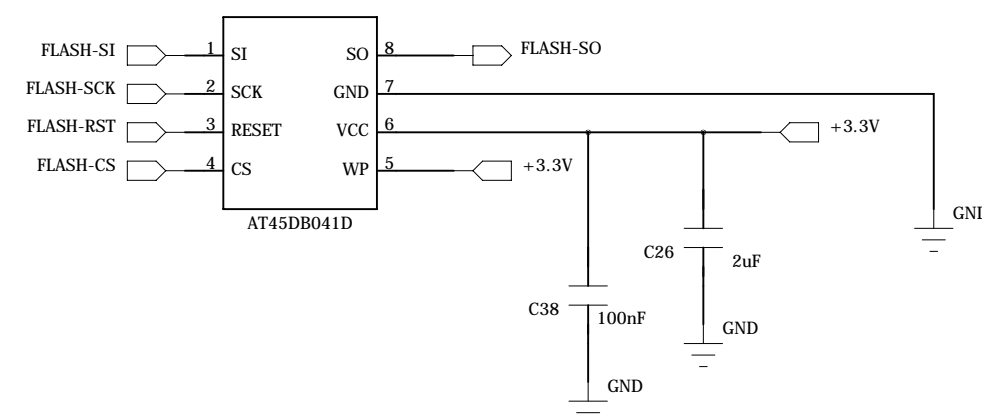
START



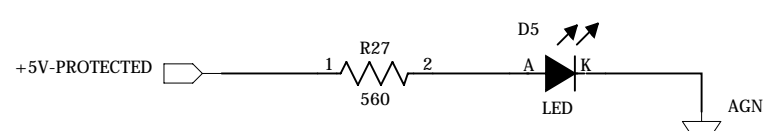
PUSH BUTTONS



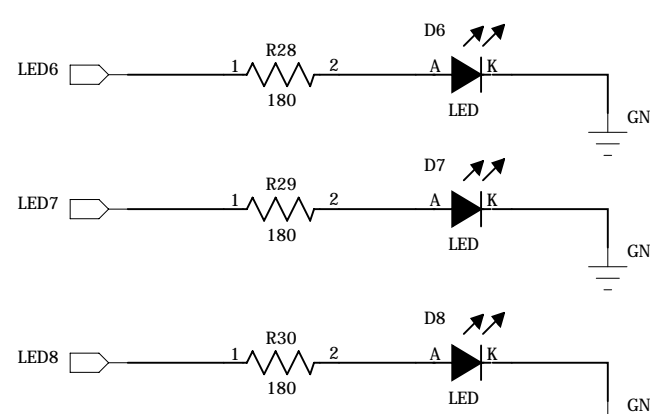
USB



DATAFLASH

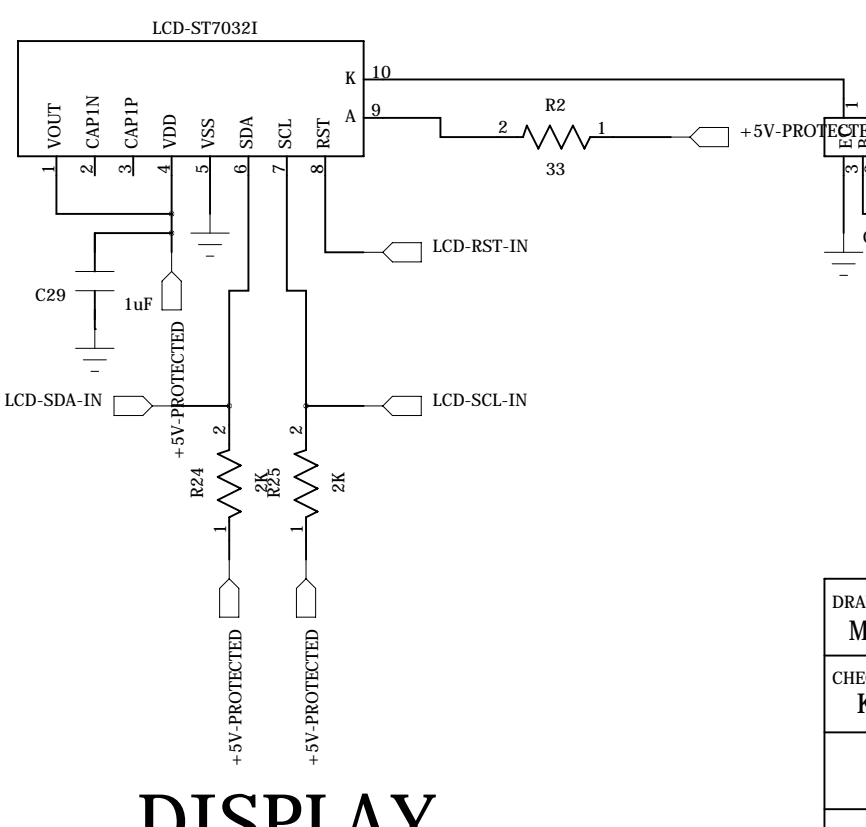


uPROCESSOR-SECTION-ON



DEBUGGING

LED'S



DISPLAY

DRAWN: Mohamad Sahyouni	DATED: Feb 13th, 201
CHECKED: Kent Bertilsson	DATED:

COMPANY:		Mid Sweden University	
TITLE:			
Induction Heater			
CODE:	SIZE:	DRAWING NO:	REV:
		1	2
SCALE:		SHEET: 1 of 1	