
PDP USB Down Load Manual

Contents

1. Parts Identification.
2. Board Identification.
3. USB installation.
4. How to use the program.
5. New File list.

Blue Chips

1. Parts Identification

Hardware (pages 2 & 3)

- Jig PCB
- USB Cable
- 15 Pin Cable
- 12 pin Cable (to Follow)

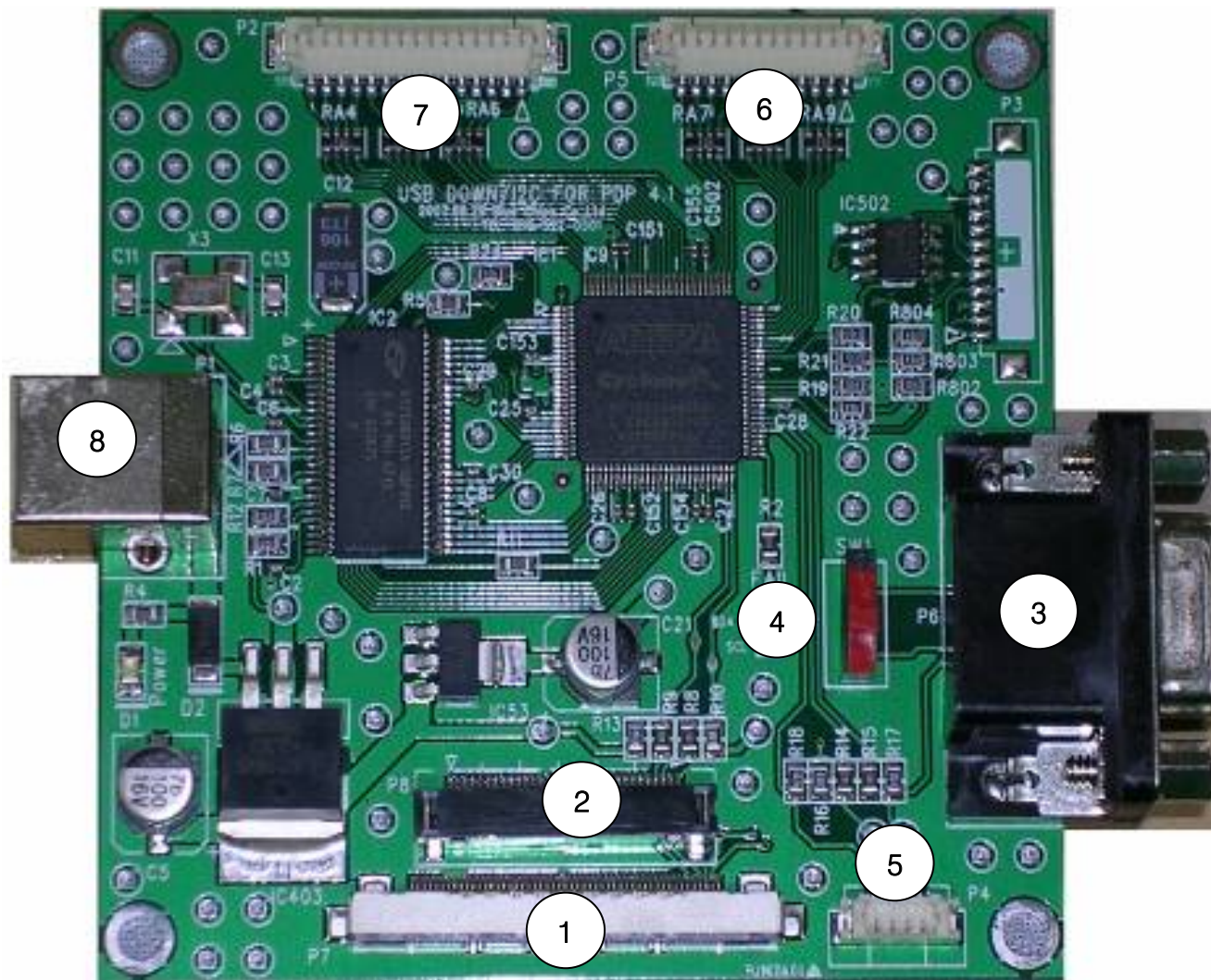
Software

- PDP Files by module type
- Program Software
- USB Driver

2.PDP Control board upgrade jig

Connection identification

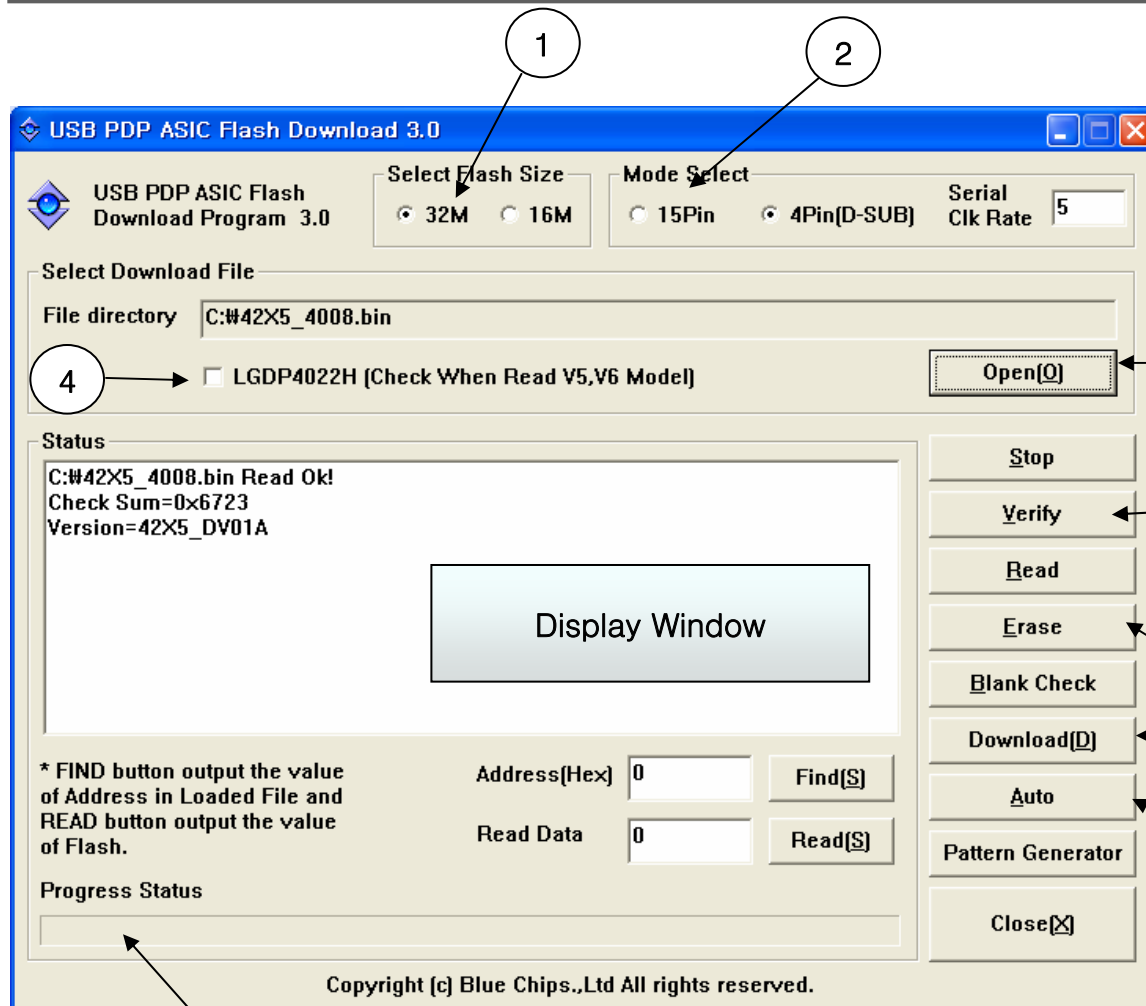
1. Full HD LVDS Connector.
2. XGA LVDS Connector.
3. Serial download D-Sub (NOT USED).
4. Switch for D-sub use.
5. Serial download connector.
6. 12 Pin Connector for V5 & V6 PDP modules.
7. 15 Pin Connector for ALL other PDP modules.
8. USB Connector to PC.



5. Mal-Discharge file list.

| | Category | Model | ROM Ver. | Check-sum | Voltage Adj. | Comment | |
|--|----------|-------------|-------------------|---------------|--------------|------------------------------------|--|
| | 42XGA | 42X1A | PDP42X1#### | 42X1A2DIC S01 | C3F5 | Vzb(95) | - |
| | | 42X2 | PDP42X200## | 42X2DNCS4 | CD21 | None | - |
| | | | PDP42X2002# | 42X2ADNACS1 | 1067 | Vset-up(100) | Blue Dielectric layer |
| | | | PDP42X202## | | | | |
| | | | ... | | | | |
| | | 42X2A | PDP42X208## | 42X2ATDCS1 | 22EE | Vset-up(100) | layer |
| | | 42X3 | PDP42X30###.AKLGG | 42X33DCS3 | 8.00E+06 | - | (*Revised) |
| | | 42X3A | PDP42X30###.AKLTG | 42X3A3DCS3 | 7FDD | - | *Revised |
| | 42X4 | PDP42X40### | 42X4CS1A | 5A20 | - | *New Released | |
| | | 42X4A | PDP42X40523 | 42X4A3DN1B | B28D | -Vy (-145V), Vzb (140V) | *New Released |
| | 50XGA | 50X2 | PDP50X2033# | 50X2DNCS2 | CAC9 | Vset-up time down | - |
| | | 50X2A | PDP50X205## | 50X2ADNCS2 | 6CDC | Vs(185),Vy(75) Vset-up(230) | - |
| | | | | 50X3DNCS02 | 2.00E+14 | All set except 50PY2DR | |
| | | 50X3 | PDP50X30### | 50X3DNCS02A | 2EC5 | | Vs 3V down |
| | | 50X4 | PDP50X4### | 50X43DA2K | AAC8 | - | - |
| | | 42V6 | PDP42V6000# | 42V63MNCS1 | 93A2 | Vset-up time down | - |
| | | 42V6A | PDP42V600## | 42V63MN03B | 831F | Vset-up time down | - |
| | | 42V7 | PDP42V70### | 42V70CS4BD | 8EAD | Vs(187),Va(65) Vy(80), Vsc(115) | KIT should be changed first. 1) Y-SUS: 6871QYH036D 2) Z-SUS: 6871QZH041B 3) CTRL: 6871QCH053G |
| | | | | | | | |
| | 42VGA | 42V5 | PDP42V50### | 42V52MNCS1 | A140 | Vset-up time down | - |
| | 60XGA | 60X5A | PDP60X505## | 60X5ACS02 | FFF2 | - | - |
| | 71HD | 71H1 | PDP71H10### | 71H13CS01 | CECC | - | - |
| | 71HD | 71H2 | PDP71H20### | 71H23DN01K | FF3F | - | *New Released |

4. Download Program Manual



Connect the JIG to the control board using the 15 Pin cable. Power on the set & make sure the LED's Are alight. If upgrading the V5 or V6 module please use the 12 Pin cable (to be supplied).

1. Select Flash memory size.
2. Select mode (use 15 pin).
3. Click the Open button and browse for the correct file to down load.
4. Tick the box if V5 or V6 module is being upgraded.
5. You can manually erase & download.
6. Clicking the auto button will erase first then download.
7. Click to verify the download

Progress Bar

3. Hardware Installation

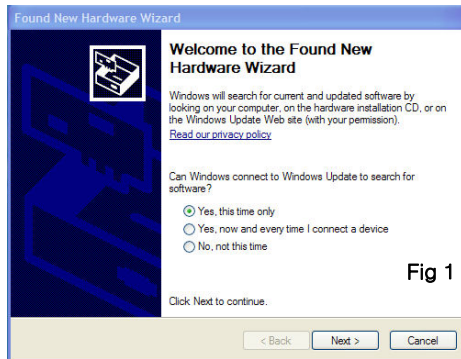


Fig 1

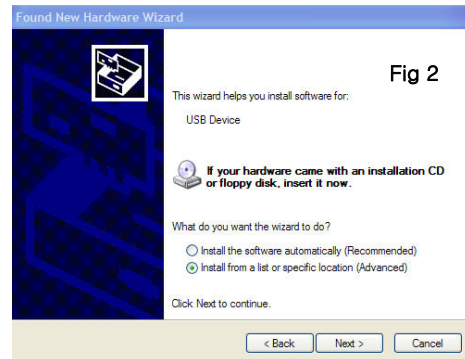


Fig 2

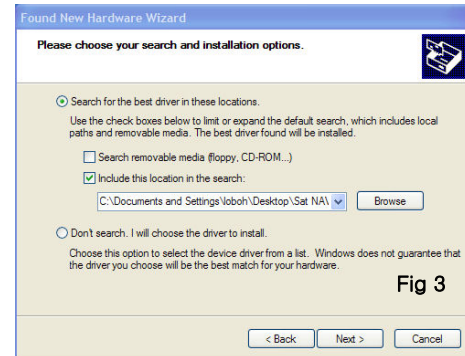


Fig 3

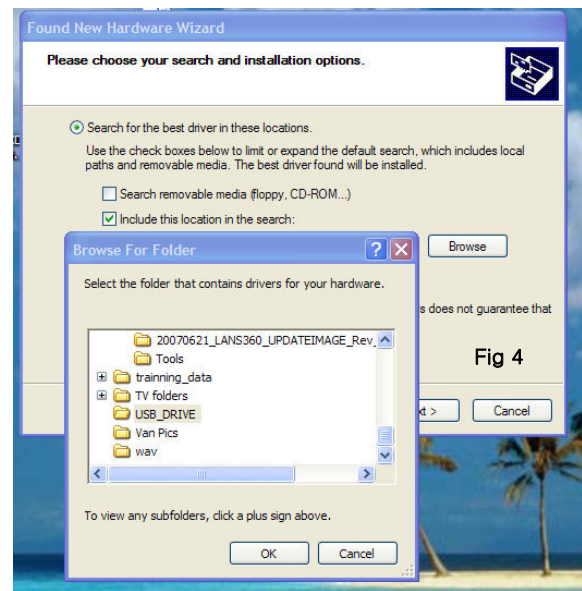


Fig 4

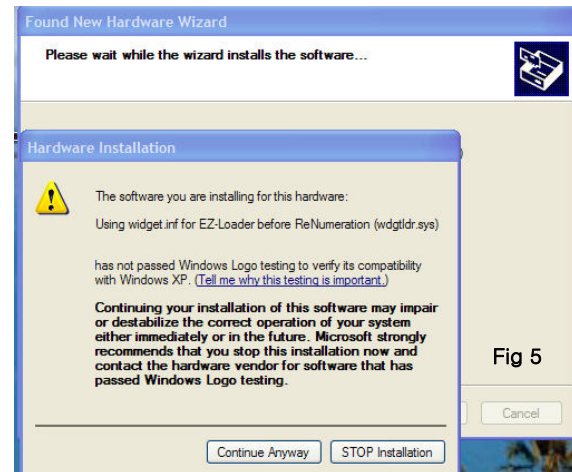


Fig 5

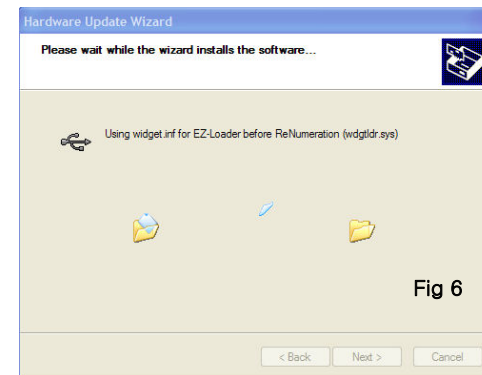


Fig 6

1. When the USB Download jig is connected to PC for the first time, the found new hardware wizard pops up as seen in the picture to the left. (fig1)
2. Choose the manual location (fig 2)
3. Click on Browse (fig 3)
4. Browse to the file USB_Drive (in the location where you saved the files) (fig 4)
5. Windows will warn the driver is not digitally signed, select continue anyway (fig 5).
6. The driver should be copied (fig 6)
7. Reboot pc.