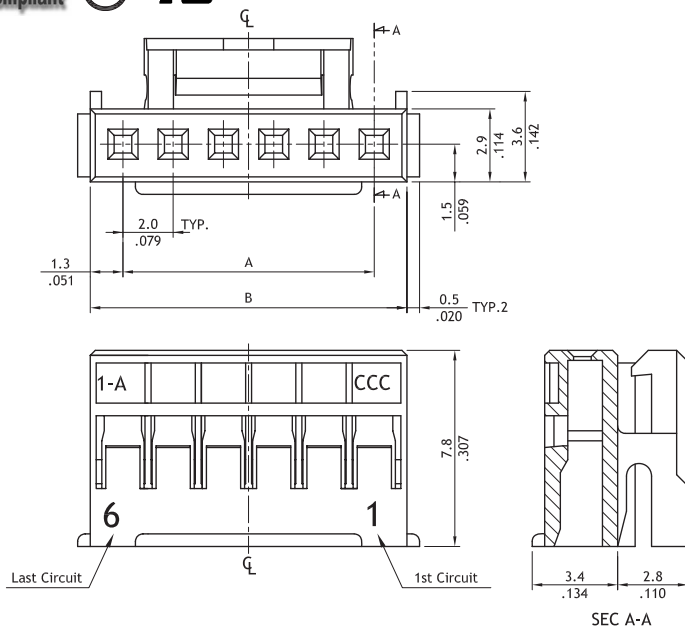
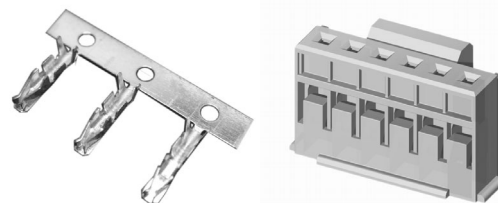


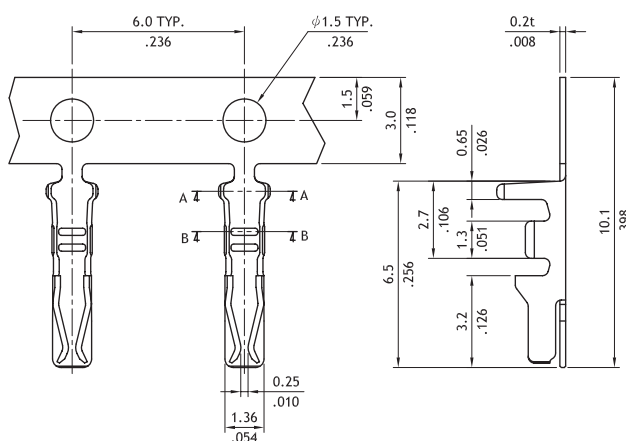
CI06 Series 2.00mm(.079") Wire to Board Connector

- With locking latch provide secure mating
- Mate with CI06 header
- Can be used CI06 crimp clip terminal
- Insulator: Nylon 66 UL 94V-0 , Color Nature

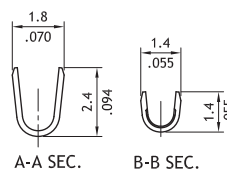
RoHS Compliant **HF** **UL**



Circuits	Dimension	
	A	B
2	2.0(.079)	4.6(.181)
3	4.0(.157)	6.6(.260)
4	6.0(.236)	8.6(.339)
5	8.0(.315)	10.6(.417)
6	10.0(.394)	12.6(.496)
7	12.0(.472)	14.6(.575)
8	14.0(.551)	16.6(.654)
9	16.0(.630)	18.6(.732)
10	18.0(.709)	20.6(.811)
11	20.0(.787)	22.6(.890)
12	22.0(.866)	24.6(.969)
13	24.0(.945)	26.6(1.047)
14	26.0(1.024)	28.6(1.126)
15	28.0(1.102)	30.6(1.205)
16	30.0(1.181)	32.6(1.283)



Wire Range	Insulation Diameter	Reel Qty
AWG #24-#30	1.45 (.057) MAX.	10,000 PCS.



Ordering Code

CI06 **16** **S** **0000**

- 1 Series No.
- 2 No. of Circuits: 02 to 16
- 3 S= housing
- 4 Other options: 0000= Standard

*Special options consult manufacturer

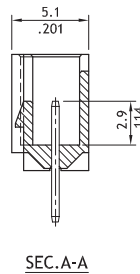
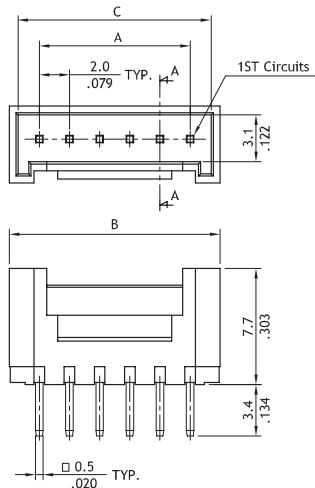
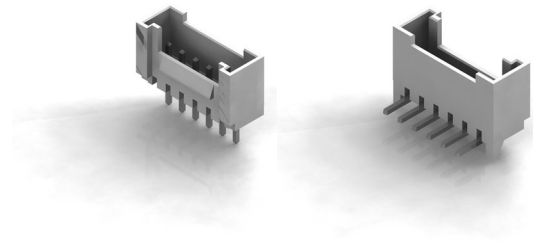
CI06 **T01** **1** **P** **E** **0**

- 1 Series No.
- 2 Type: T01= AWG #24~#30
- 3 Plating : 1= Tin over Nickel
- 4 Material: P= Phosphor Bronze
- 5 Plating method : E= Pre-tinned
- 6 Other options: 0= Standard

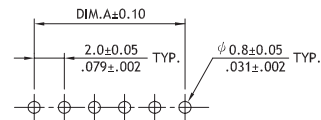
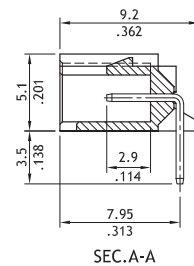
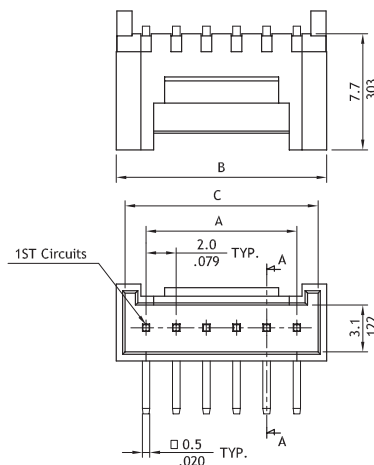
CI06 Series 2.00mm(.079") DIP Header

- With locks provide secure mating
- Mate with CI06 housing
- Insulator: Polyamide UL 94V-0 , Color Nature
- With Tin plated 0.5mm square pin

RoHS Compliant   



Circuits	Dimension		
	A	B	C
2	2.0(.079)	5.96(.235)	4.8(.189)
3	4.0(.157)	7.96(.313)	6.8(.268)
4	6.0(.236)	9.96(.392)	8.8(.346)
5	8.0(.315)	11.96(.471)	10.8(.425)
6	10.0(.394)	13.96(.550)	12.8(.504)
7	12.0(.472)	15.96(.628)	14.8(.583)
8	14.0(.551)	17.96(.707)	16.8(.661)
9	16.0(.630)	19.96(.786)	18.8(.740)
10	18.0(.709)	21.96(.865)	20.8(.819)
11	20.0(.787)	23.96(.943)	22.8(.898)
12	22.0(.866)	25.96(1.022)	24.8(.976)
13	24.0(.945)	27.96(1.101)	26.8(1.055)
14	26.0(1.024)	29.96(1.180)	28.8(1.134)
15	28.0(1.102)	31.96(1.258)	30.8(1.213)
16	30.0(1.181)	33.96(1.337)	32.8(1.291)



Recommended P.C. Board Layout

Ordering Code

① ② ③ ④ ⑤ ⑥ ⑦
CI06 16 P 1 V 00 - LF

① Series No.

② No. of Circuits:
02 to 16

③ P= DIP header

④ Plating code:
1= Tin over Nickel

⑤ Type: V= Vertical
H= Right angle

⑥ Other options:
00= Standard

⑦ Process:

-LF = For Lead Free soldering process
 -NH = For Lead Free soldering process
 and Halogen-Free

* Special options consult manufacturer