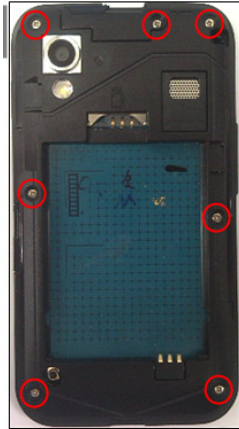


7. Level 2 Repair

7-1. Disassembly

1

1) Unscrew the 7 points.



2

1) Disassemble the REAR CASE like below picture.
Lift the REAR CASE from below.



※ Caution

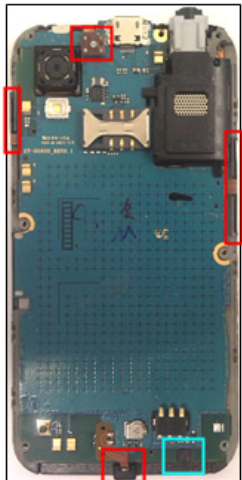
1) Be care of scratch and molding damage.

※ Caution

1) Be care of scratch and molding damage.

3

1) Detach the 2 KEY FPCB .
2) Separate the LCD connector.
3) Lift the MIC FPCB



4

1) Separate the LCD connector.



※ Caution

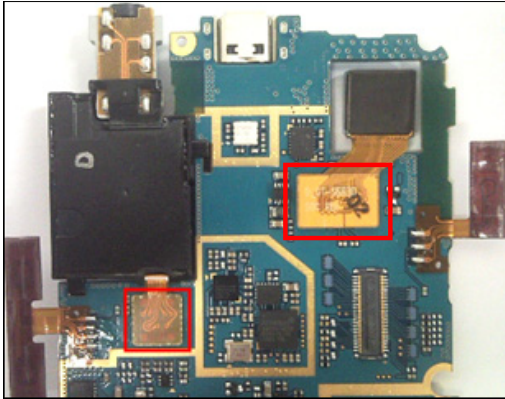
1) Be care of scratch and molding damage.
2) Be care of damage to the FPCB.

※ Caution

1) Be care of scratch and molding damage.
2) Be care of damage to the FPCB.

5

1) Separate the EARJACK connector and CAMERA connector from PBA.

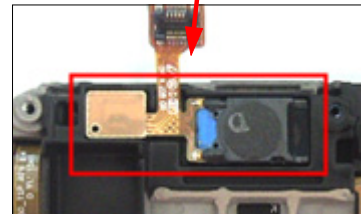
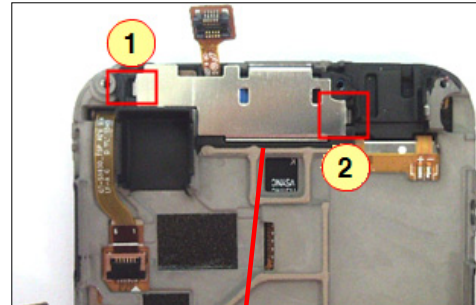


※ Caution

- 1) Be care of damage to the EARJACK Module.
- 2) Be care of damage to the CAMERA.

6

1) Disassemble the SUS and RCV from BRACKET.

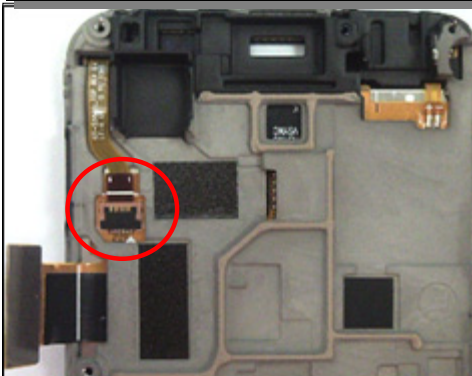


※ Caution

- 1) Be care of damage to RCV.

7

1) Open the TSP connector then separate TSP from BRACKET.



- 1) Be care of damage to the TSP FPCB.

8

1) Remove LCD from BRACKET.

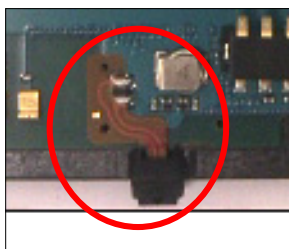


- 1) Be care of scratch and molding damage.
- 2) Be care of damage to the TSP & LCD.

7-2. Assembly

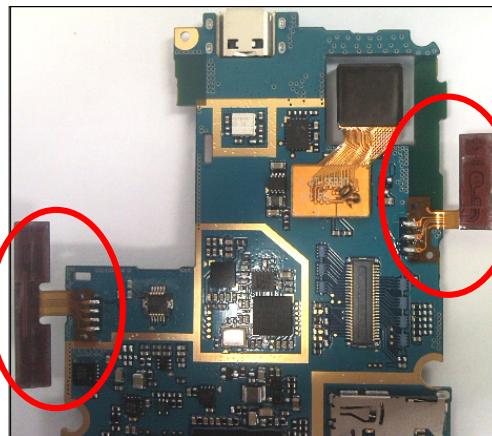
1

1) Solder the MIC.



2

1) Solder the VOLUME KEY & POWER KEY FPCB.



※ Caution

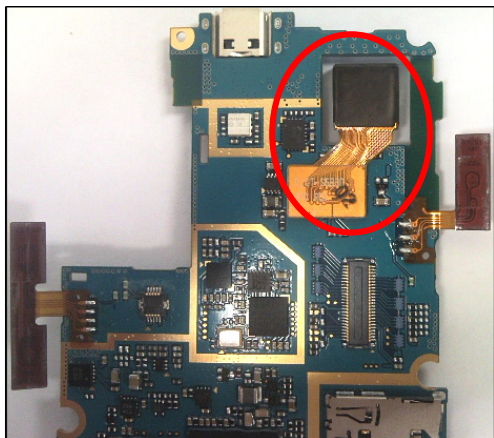
1) Be care of damage the FPCB.

※ Caution

1) Be care of damage to PBA and MOTOR wire

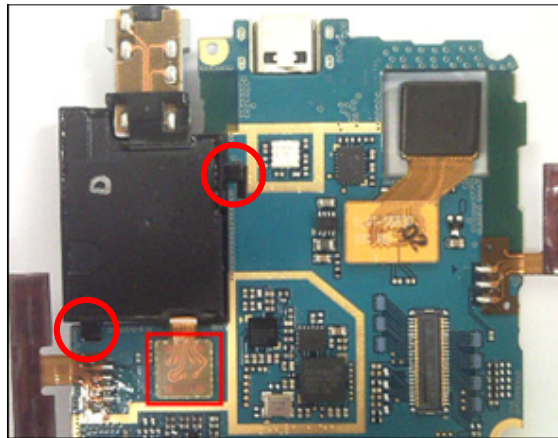
3

1) Assemble the CAMERA.



4

1) Assemble the EARJACK module and connector.



※ Caution

1) Be care of damage to PBA.
2) Be care of damage to CAMERA.

※ Caution

1) Be care of damage to PBA.

5

1) Place LCD on the BRACKET.



※ Caution

1) Be care of damage to LCD FPCB.

6

1) Pass FPCB to BRACKET hole and then attach the TSP to BRACKET using JIG.

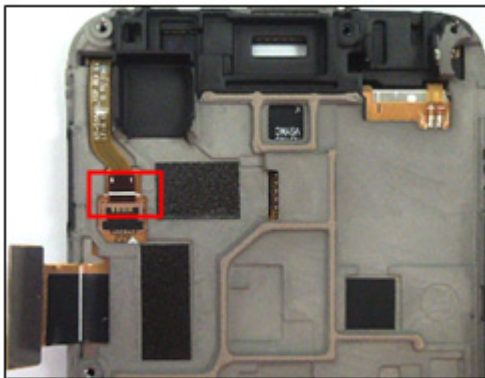


※ Caution

1) Be care of damage the TSP FPCB.
2) Be care of scratch and molding damage.

7

Connect the TSP connector.

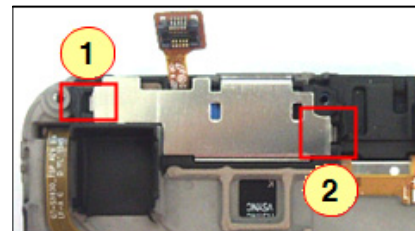
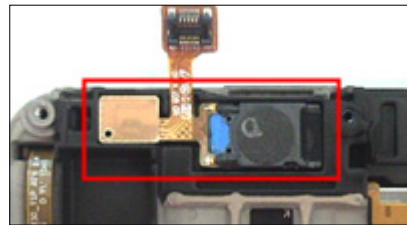


※ Caution

1) Be care of scratch and molding damage.
2) Be care of TSP Fpcb damage.

8

1) Put the RCV to BRACKET.
2) Assemble the SUS to BRACKET.

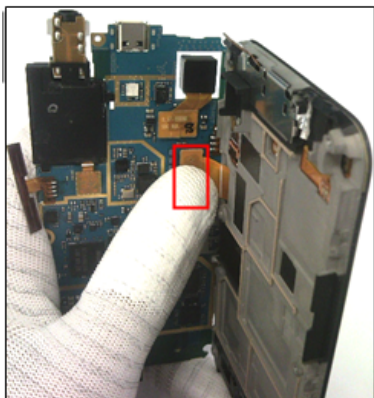


※ Caution

1) Be care of damage the RCV.
2) Be care of scratch and molding damage.

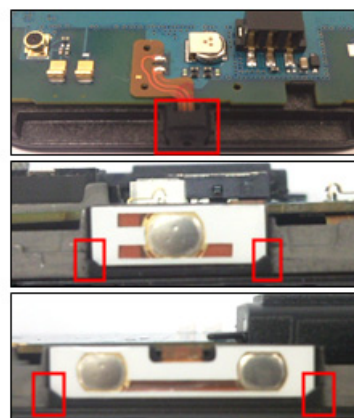
9

1) Connect the LCD connector.



10

1) Put the PBA to the BRACKET
 2) Attach two KEYFPCB to the BRACKET and place the MIC.



※ **Caution**

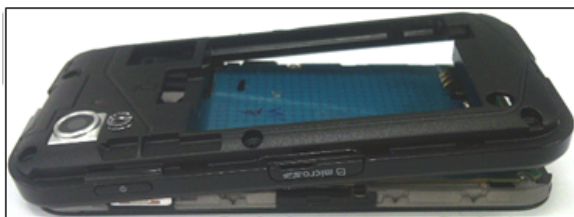
- 1) Be care of scratch and molding damage.
- 2) Be care of damage to LCD FPCB.

※ **Caution**

- 1) Be care of scratch and molding damage.
- 2) Be care of damage to FPCB.

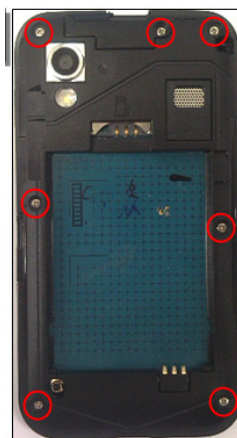
11

1) Assemble the REAR from upside.



12

1) Screw 7 points.
 ● Torque : 1.0 ~ 1.2 Kgf-cm
 Size : M1.4 * L4.0



※ **Caution**

- 1) Be care of scratch and molding damage.

※ **Caution**

- 1) Be care of scratch and molding damage.