

Designing with the "Advanced" TL431, ATL431

Andrew Leverette

ABSTRACT

This application note will discuss TI's latest addition to its adjustable shunt regulator family, ATL431. ATL431 offers the lowest minimum cathode current for regulation ($I_{KA(min)}$) and reference current (I_{REF}) of the 431 family of shunt references. Which can equate to much I_Q savings on the systems level. Key ATL431 features and the benefits that it presents to common adjustable shunt regulator applications will be discussed along with a comparison with the existing TL431 solution.

Contents

1	Advancements	2
2	Features.....	2
2.1	$I_Q \rightarrow I_{KA}$ and I_{REF}	2
2.2	Stability.....	3
2.3	Improved Absolute Accuracy	5
3	Application Considerations	6
3.1	Isolated Switched Mode Power Supply	6
4	Conclusion	7

List of Figures

1	Error Amp Section of Flyback Supply	2
2	ATL431 Inversion Region.....	3
3	ATL431 Inversion Region vs. Temperature	3
4	ATL431 Frequency Response	4
5	Low I_{KA} ($V_{KA} = 2.5\text{ V}$) Stability Boundary	4
6	ESRs at $V_{KA} = 2.5\text{ V}$	4
7	ESRs at $V_{KA} = 5.0\text{ V}$	4
8	ESRs at $V_{KA} = 10.0\text{ V}$	4
9	ATL431 V_{REF} vs. Temperature.....	6
10	TL431 V_{REF} vs. Temperature.....	6
11	ATL431 $\Delta V_{REF}/\Delta V_{KA}$ vs. Temperature.....	6
12	TL431 $\Delta V_{REF}/\Delta V_{KA}$ vs. Temperature	6
13	Isolated SMPS	7

List of Tables

1	ATL431 vs. TL431	5
---	------------------------	---

1 Advancements

- Very low operating current
 - $I_{KA(min)} = 35 \mu A$ (max)
 - $I_{REF} = 100 \text{ nA}$ (max)
 - $I_{OFF} = 200 \text{ nA}$ (max)
- Stability
- Improved Absolute Accuracy
 - Low Output Impedance of 0.05Ω
 - 5 mV Temperature Drift
 - Low Voltage Modulation ($-400 \mu V \Delta V_{REF}/\Delta V_{KA}$)

2 Features

2.1 $I_q \rightarrow I_{KA}$ and I_{REF}

With shunt regulators contributing little to the overall system BOM cost, they can contribute much to the system's overall power budget, becoming a pain for many designers. Many times the power consumed by these components are compensated by more expensive core devices like DC - DC controllers, data acquisition circuits and MCUs.

ATL431 solves this problem with its lower current consumption from the cathode and reference pins, denoted as I_{KA} and I_{REF} . $I_{KA(min)}$ is the minimum current the active circuitry needs to be biased in the proper operating region to give ATL431 enough gain to regulate. With ATL431 being a bipolar technology, it also needs a base current for the BJTs and this is given by I_{REF} . As shown in the application example below (Figure 1), these can lead to two sources of quiescent current (I_q).

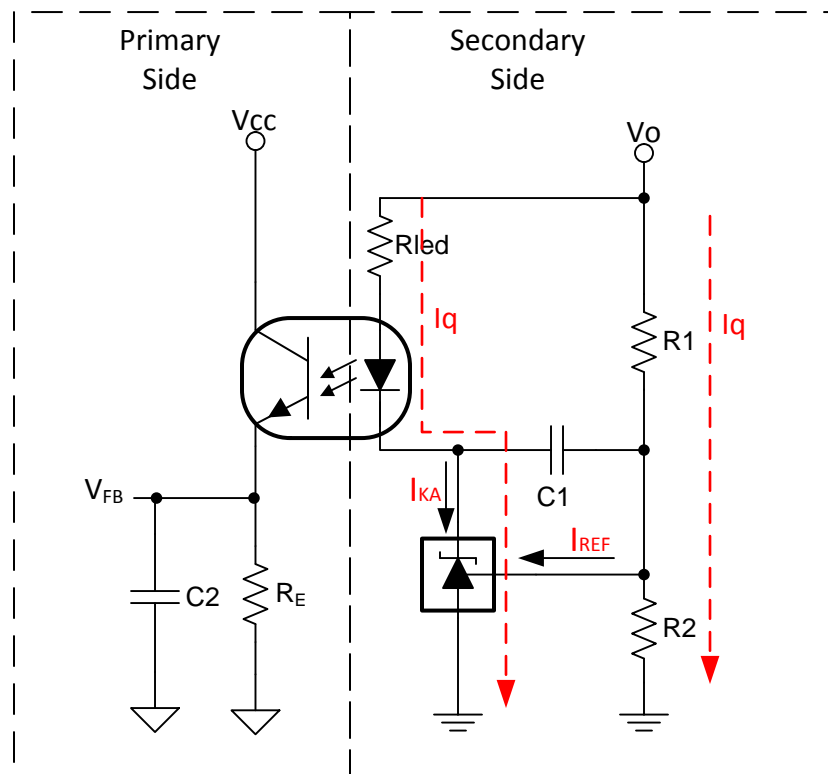


Figure 1. Error Amp Section of Flyback Supply

As shown in Table 1 at least 1 mA of I_{KA} is needed to bias TL431 and 35 μA for ATL431 for regulation. These are the maximum values, as it is recommended to use these as a worst case scenario due to process variation. It should also be considered that the $I_{KA(\text{min})}$ spec is the minimum current needed for regulation and not accuracy. This means that the shunt regulator will not be biased to its full gain potential. Because ATL431 is a shunt regulator, it is most useful to represent this device as a voltage controlled current device or an operational transconductance amplifier (OTA). The gain of an OTA is represented as transconductance ($G_m = \Delta I_{KA} / \Delta V_{KA}$).

$I_{KA(\text{min})}$ represents the inversion region of the shunt regulator between operable transconductance and optimum transconductance. As shown in Figure 2, there exists four regions of G_m .

1. Minimum G_m
2. Low G_m Region
3. Inversion Region
4. Optimum G_m

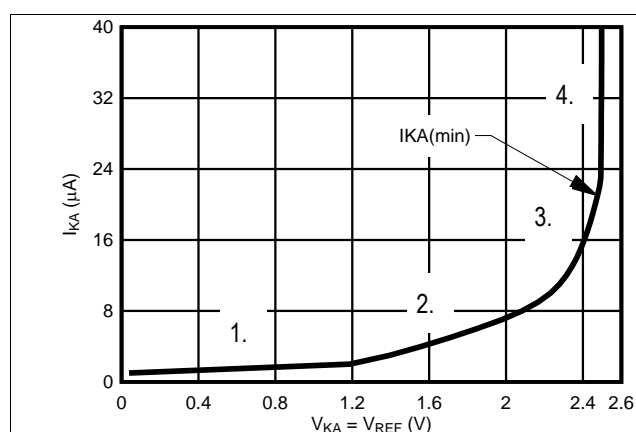


Figure 2. ATL431 Inversion Region

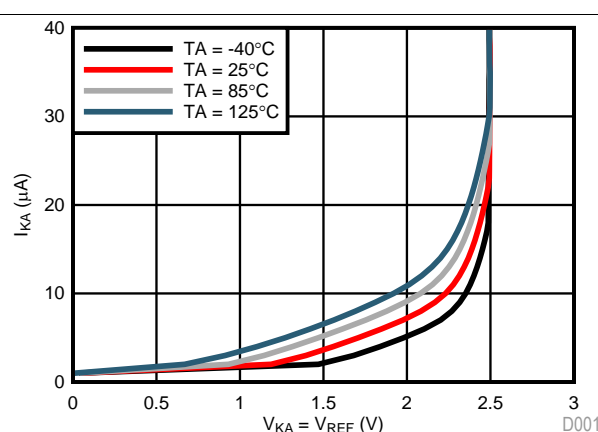


Figure 3. ATL431 Inversion Region vs. Temperature

For ATL431, it is recommended to use a minimum cathode current of 40 μA for optimum gain performance. This value takes in to account the temperature variation of $I_{KA(\text{min})}$ (see Figure 3), process variation and is well within the optimum G_m region.

2.2 Stability

2.2.1 Error Amplifier

The 431' families of shunt regulators were designed to have wide bandwidth while ensuring stability without any external frequency compensation. This makes the device useful in control loop applications and as reference voltage generators without external capacitance. These attributes are also very useful in 431's key application as an error amplifier in a Flyback SMPS system where it is uncommon to place a capacitor between the cathode and anode.

One of the drawbacks of the current TL431 is that it has a unity gain bandwidth of 2 MHz, allowing power supply noise and ripple to be fed back to the controller. The ATL431 has a unity gain bandwidth of 250 kHz as shown in Figure 4. The lower bandwidth of the ATL431 helps to attenuate high frequency ripples on the output of the power supply so they are not fed back to the controller. Whereas designers will add a pole on the output of the high frequency error amplifiers to attenuate ripple.

Another advantage of the ATL431's frequency response in flyback supplies is its flat phase response or low phase shift over typical crossover frequencies from 1 kHz to 100 kHz (see Figure 4). A flat phase response allows designers control of any desired lag or lead with external passive components.

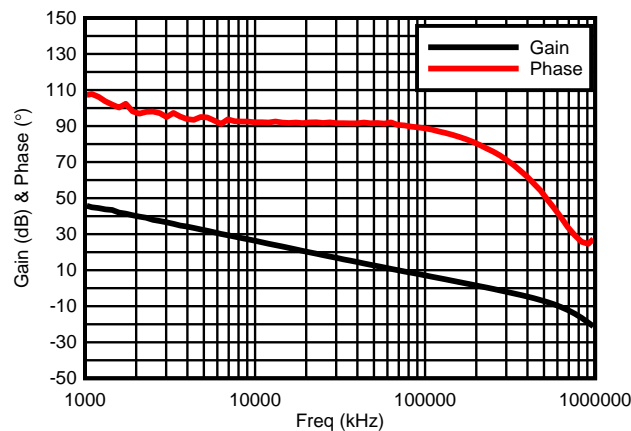
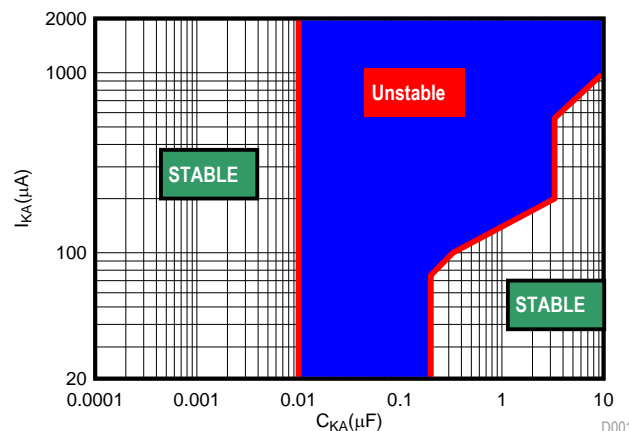


Figure 4. ATL431 Frequency Response

2.2.2 Shunt Regulator

Stability is a large concern when designing with shunt regulators. Unless the goal is to design the ATL431 as an oscillator, it is best to operate this device in its stable regions. For use as a reference or linear regulator (closed loop), it is often tempting to apply a capacitor between the cathode and anode of shunt regulators for noise bypassing or stabilizing of legacy devices that aren't very stable with no capacitive load. Because ATL431 is pin to pin compatible with many of these devices, designers need to consider the stability regions of ATL431 in the shunt regulator configuration.

Figure 5 shows one of many stability regions for ATL431 (for more, please see the typical characteristics section in the datasheet). $V_{KA} = 2.5 \text{ V}$ is the most common use and worst case stability region. To reduce BOM and costs, the ATL431 was designed to be very stable with a 0 pF of load capacitance. As shown in Figure 5, it is very stable with low capacitance with a wide margin of capacitance values (up to 10 nF).



A ESR < 20mΩ

Figure 5. Low I_{KA} ($V_{KA} = 2.5 \text{ V}$) Stability Boundary

One key difference in ATL431's stability boundary plots from other shunt regulators is the ESR value denoting. These plots were determined using ceramic capacitors that typically have very low ESR less than 20 mΩ.

To use a larger capacitance that is within the instability region, it is recommended to add additional ESR to the load capacitance or use a high ESR capacitor. Figure 6 through Figure 8 show the minimum recommended series resistance to add for desired output capacitance to improve phase margin and make ATL431 stable.

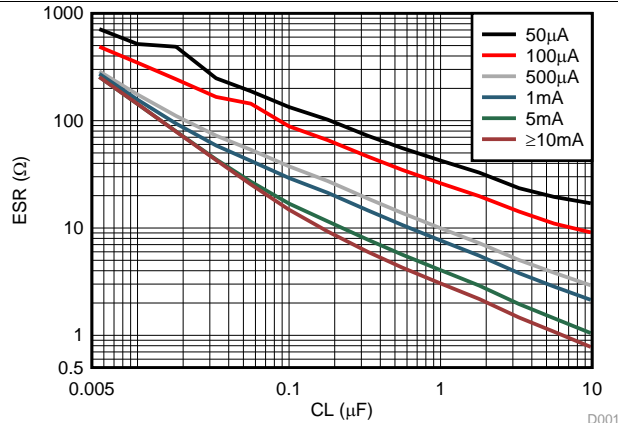


Figure 6. ESRs at $V_{KA} = 2.5\text{ V}$

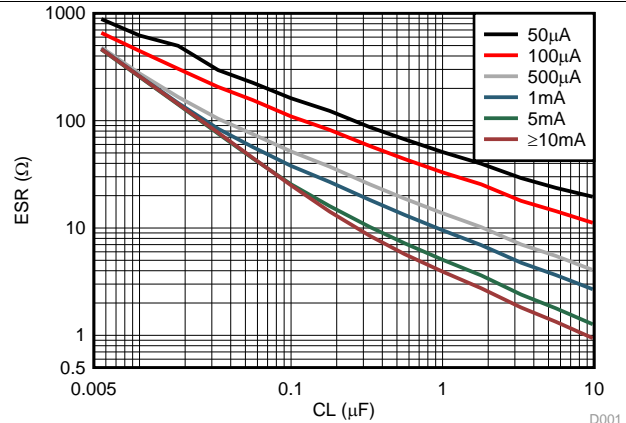


Figure 7. ESRs at $V_{KA} = 5.0\text{ V}$

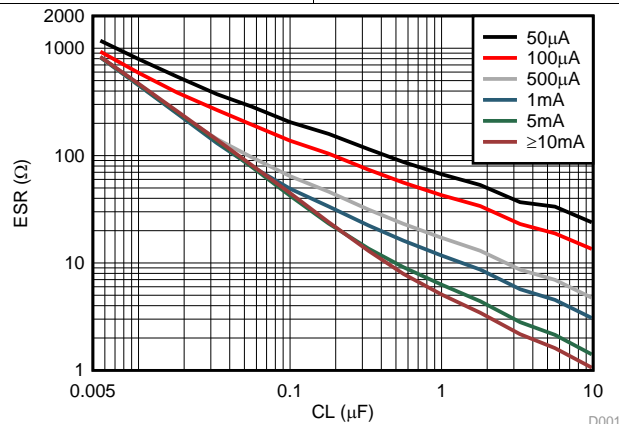


Figure 8. ESRs at $V_{KA} = 10.0\text{ V}$

2.3 Improved Absolute Accuracy

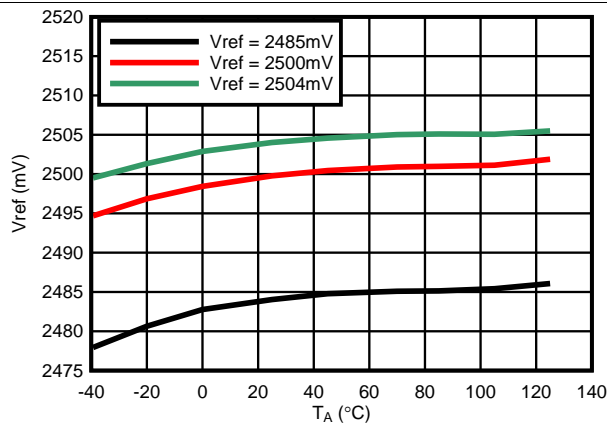
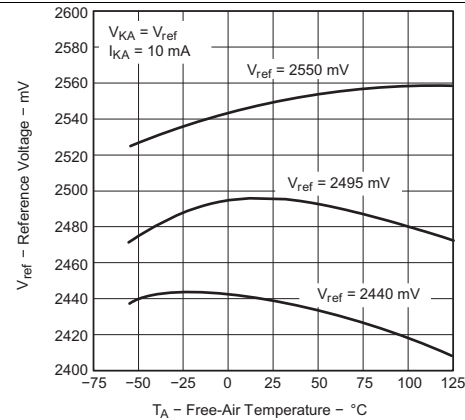
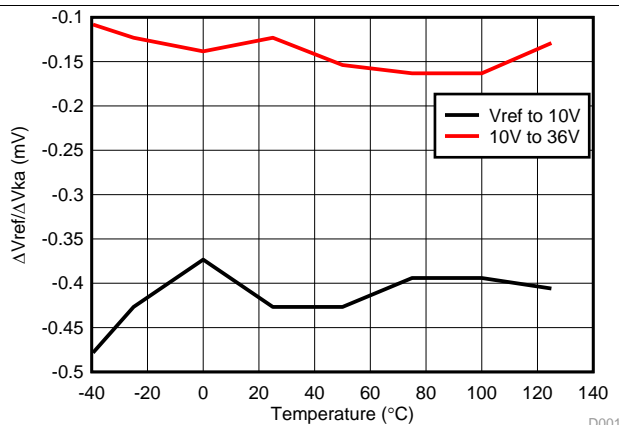
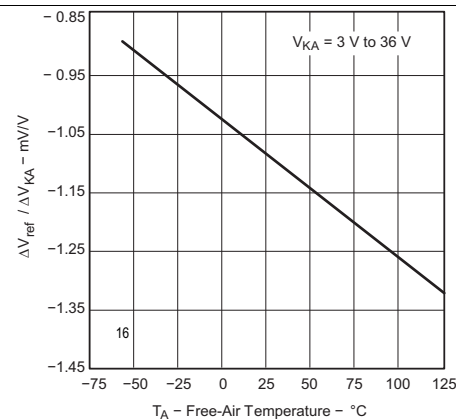
Though shunt regulators and voltage references are specified for an initial accuracy (i.e. 0.5%), once output impedance, reference current, programmed V_{KA} and temperature are taken in to account, the overall accuracy may decrease. This can be deduced by the below expressions and Table 1 where it is easily seen that most of the specifications that relate to overall system accuracy are at least an order of magnitude lower.

Total V_{REF} error = initial accuracy + output impedance error + programmed V_{KA} error + V_{REF} temperature deviation – Iref error $\approx V_{REF}(\text{min/max}) + I_{KA} \times Z_{KA} + (V_{KA} - V_{REF}) \times \Delta V_{REF}/\Delta V_{KA} + V_{I(\text{dev})} - R1 \times I_{REF}$

Table 1. ATL431 vs. TL431

Parameter	ATL431B	TL431B
V_{REF}	2.5V ($\pm 0.5\%$)	2.495V ($\pm 0.5\%$)
$I_{KA(\text{min})}$	35 μA	1 mA
I_{REF}	150 nA	4 μA
$V_{I(\text{dev})}(-40^\circ\text{C to } 85^\circ\text{C})$	5 mV	14 mV
$\Delta V_{REF}/\Delta V_{KA}$	-0.4 mV/V	-1.4 mV/V
Z_{KA}	0.05 Ω	0.2 Ω

Table 1 and datasheet electrical characteristics offers the majority of the specifications at room temperature. A closer look at the typical characteristics plots for each part will show even better performance of ATL431 over temperature. Where a much flatter V_{REF} curvature can be observed.


Figure 9. ATL431 V_{REF} vs. Temperature

Figure 10. TL431 V_{REF} vs. Temperature

Figure 11. ATL431 $\Delta V_{REF}/\Delta V_{KA}$ vs. Temperature

Figure 12. TL431 $\Delta V_{REF}/\Delta V_{KA}$ vs. Temperature

3 Application Considerations

3.1 Isolated Switched Mode Power Supply

Many Isolated supplies are used in very high voltage environments that are susceptible to large ground shifts and EOS on the primary side. The transformer coil and optocoupler ideally act as barriers for EOS between the primary and secondary side. However, these devices have ESD/EOS limits that can cause a breakdown of that barrier, with the optocoupler being the weakest link. Once the optocoupler is breached, the overstress has two paths depending on where the bias resistor (R_B) is placed. It will travel to the output capacitor (C_O) to ground or the shunt regulator (ATL431).

The breached current from the ESD event will travel in the path of least resistance, meaning the path that does not have R_B in it. In the case of Figure 13, the EOS will flow in to the output capacitor. This is good because the capacitor will tolerate much higher ESD energies than the shunt regulator can survive.

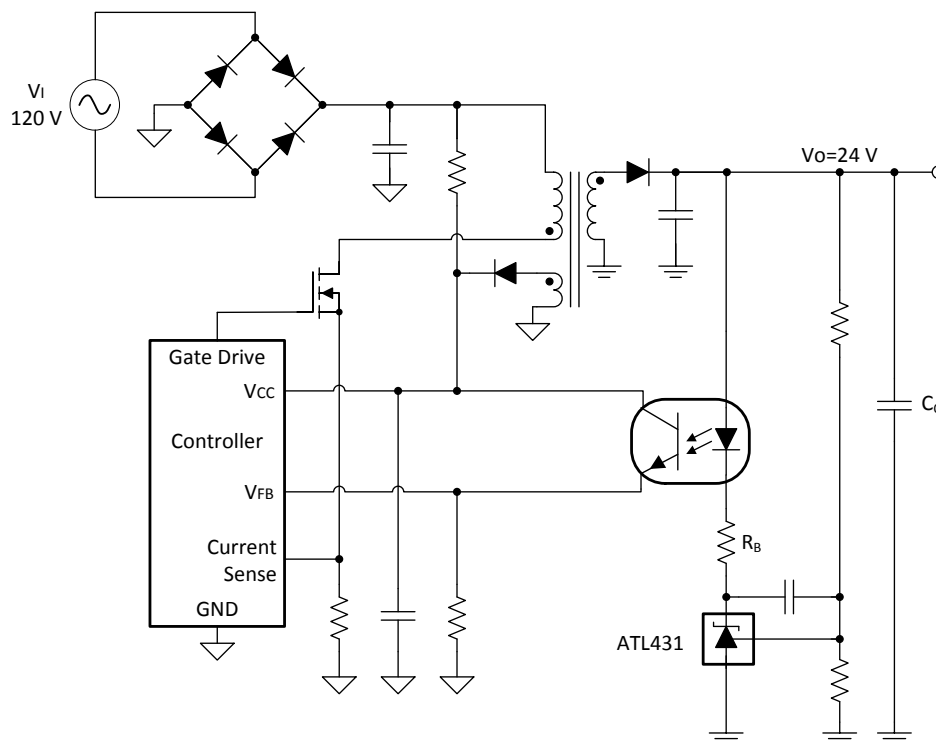


Figure 13. Isolated SMPS

4 Conclusion

As discussed in this document, ATL431 is a big improvement upon the existing TL431 solution. With the lower operating current making this device a good choice in applications that need better power efficiency and the improved overall accuracy helping users to have more precision in their system.

IMPORTANT NOTICE

Texas Instruments Incorporated and its subsidiaries (TI) reserve the right to make corrections, enhancements, improvements and other changes to its semiconductor products and services per JESD46, latest issue, and to discontinue any product or service per JESD48, latest issue. Buyers should obtain the latest relevant information before placing orders and should verify that such information is current and complete. All semiconductor products (also referred to herein as "components") are sold subject to TI's terms and conditions of sale supplied at the time of order acknowledgment.

TI warrants performance of its components to the specifications applicable at the time of sale, in accordance with the warranty in TI's terms and conditions of sale of semiconductor products. Testing and other quality control techniques are used to the extent TI deems necessary to support this warranty. Except where mandated by applicable law, testing of all parameters of each component is not necessarily performed.

TI assumes no liability for applications assistance or the design of Buyers' products. Buyers are responsible for their products and applications using TI components. To minimize the risks associated with Buyers' products and applications, Buyers should provide adequate design and operating safeguards.

TI does not warrant or represent that any license, either express or implied, is granted under any patent right, copyright, mask work right, or other intellectual property right relating to any combination, machine, or process in which TI components or services are used. Information published by TI regarding third-party products or services does not constitute a license to use such products or services or a warranty or endorsement thereof. Use of such information may require a license from a third party under the patents or other intellectual property of the third party, or a license from TI under the patents or other intellectual property of TI.

Reproduction of significant portions of TI information in TI data books or data sheets is permissible only if reproduction is without alteration and is accompanied by all associated warranties, conditions, limitations, and notices. TI is not responsible or liable for such altered documentation. Information of third parties may be subject to additional restrictions.

Resale of TI components or services with statements different from or beyond the parameters stated by TI for that component or service voids all express and any implied warranties for the associated TI component or service and is an unfair and deceptive business practice. TI is not responsible or liable for any such statements.

Buyer acknowledges and agrees that it is solely responsible for compliance with all legal, regulatory and safety-related requirements concerning its products, and any use of TI components in its applications, notwithstanding any applications-related information or support that may be provided by TI. Buyer represents and agrees that it has all the necessary expertise to create and implement safeguards which anticipate dangerous consequences of failures, monitor failures and their consequences, lessen the likelihood of failures that might cause harm and take appropriate remedial actions. Buyer will fully indemnify TI and its representatives against any damages arising out of the use of any TI components in safety-critical applications.

In some cases, TI components may be promoted specifically to facilitate safety-related applications. With such components, TI's goal is to help enable customers to design and create their own end-product solutions that meet applicable functional safety standards and requirements. Nonetheless, such components are subject to these terms.

No TI components are authorized for use in FDA Class III (or similar life-critical medical equipment) unless authorized officers of the parties have executed a special agreement specifically governing such use.

Only those TI components which TI has specifically designated as military grade or "enhanced plastic" are designed and intended for use in military/aerospace applications or environments. Buyer acknowledges and agrees that any military or aerospace use of TI components which have **not** been so designated is solely at the Buyer's risk, and that Buyer is solely responsible for compliance with all legal and regulatory requirements in connection with such use.

TI has specifically designated certain components as meeting ISO/TS16949 requirements, mainly for automotive use. In any case of use of non-designated products, TI will not be responsible for any failure to meet ISO/TS16949.

Products

Audio	www.ti.com/audio
Amplifiers	amplifier.ti.com
Data Converters	dataconverter.ti.com
DLP® Products	www.dlp.com
DSP	dsp.ti.com
Clocks and Timers	www.ti.com/clocks
Interface	interface.ti.com
Logic	logic.ti.com
Power Mgmt	power.ti.com
Microcontrollers	microcontroller.ti.com
RFID	www.ti-rfid.com
OMAP Applications Processors	www.ti.com/omap
Wireless Connectivity	www.ti.com/wirelessconnectivity

Applications

Automotive and Transportation	www.ti.com/automotive
Communications and Telecom	www.ti.com/communications
Computers and Peripherals	www.ti.com/computers
Consumer Electronics	www.ti.com/consumer-apps
Energy and Lighting	www.ti.com/energy
Industrial	www.ti.com/industrial
Medical	www.ti.com/medical
Security	www.ti.com/security
Space, Avionics and Defense	www.ti.com/space-avionics-defense
Video and Imaging	www.ti.com/video

TI E2E Community

e2e.ti.com