

Understanding the stable range of equivalent series resistance of an LDO regulator

By Bang S. Lee

Application Specialist, Power Management

This application note explores the stable range of equivalent series resistance (ESR) values for LDO regulators. An ac model of an LDO regulator is presented to discuss the LDO frequency response. Both stable and unstable ESR ranges are examined.

An ac model of an LDO regulator

Figure 1 shows the essential elements of a PMOS LDO regulator. The LDO regulator can be partitioned into four separate and distinct functional blocks—the pass element, the reference, the sampling resistor, and the error amplifier. The error amplifier is modeled by a transconductor (g_a) with a load comprised of capacitor C_{par} and resistor R_{par} . The parasitic parameters (C_{par} , R_{par}) represent both the output impedance of the error amplifier and the input impedance of the series pass element. The series pass element (PMOS transistor) is modeled by a small signal model with transconductance g_p . An output capacitor C_o with an equivalent series resistor (R_{ESR}) and a bypass capacitor C_b are added.

From Figure 1, the output impedance is given by

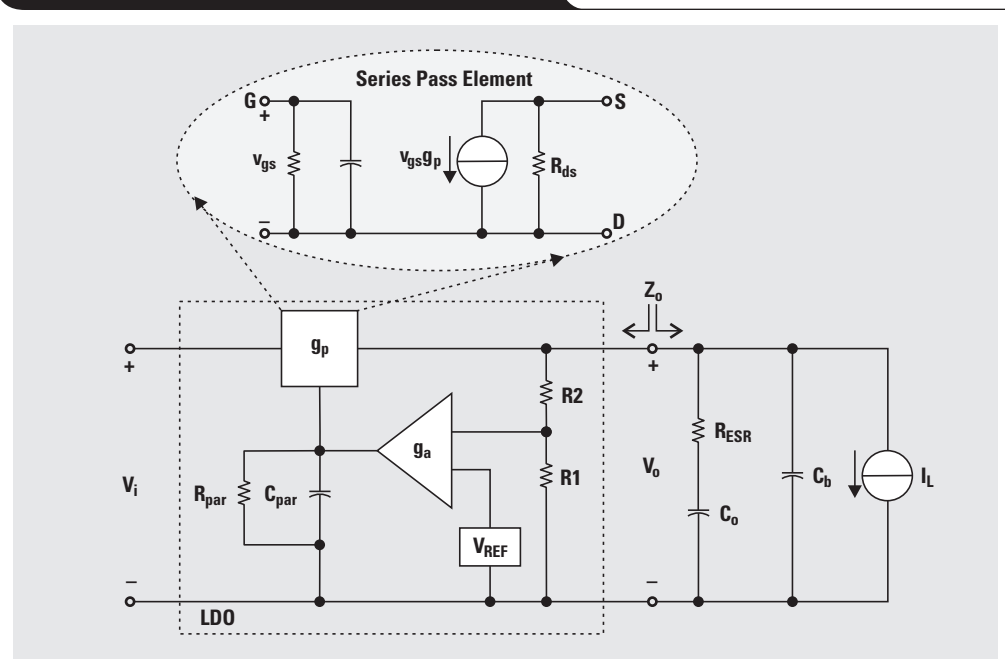
$$Z_o = R_{12p} \left\| \left(R_{ESR} + \frac{1}{SC_o} \right) \right\| \frac{1}{SC_b} \quad (1)$$

$$= \frac{R_{12p}(1 + SR_{ESR}C_o)}{S^2 R_{12p} R_{ESR} C_o C_b + S[(R_{12p} + R_{ESR})C_o + R_{12p}C_b] + 1},$$

$$\text{where } R_{12p} = R_{ds} \parallel (R_1 + R_2) \approx R_{ds}. \quad (2)$$

Typically, the output capacitor value C_o is considerably larger than the bypass capacitor C_b . Thus, the output

Figure 1. An ac model of a linear regulator



impedance Z_o approximates to

$$Z_o \approx \frac{R_{ds}(1 + SR_{ESR}C_o)}{[1 + S(R_{ds} + R_{ESR})C_o] \times [1 + S(R_{ds} \parallel R_{ESR})C_b]}. \quad (3)$$

From Equation 3, a part of the overall open-loop transfer function for the regulator is obtained, and the zero and poles can be found. The first pole is

$$P_o; S(R_{ds} + R_{ESR})C_o = -1 \quad (4)$$

$$\therefore f_{po} = \frac{-1}{2\pi(R_{ds} + R_{ESR})C_o} \approx \frac{-1}{2\pi R_{ds}C_o} (\because R_{ds} \gg R_{ESR}). \quad (5)$$

The second pole is obtained from Equation 3 again:

$$P_b; S(R_{ds} \parallel R_{ESR})C_b = -1 \quad (6)$$

$$\therefore f_{pb} = \frac{-1}{2\pi(R_{ds} \parallel R_{ESR})C_b} \approx \frac{-1}{2\pi R_{ESR}C_b}. \quad (7)$$

The zero is

$$Z_{\text{ESR}}; \quad \text{SR}_{\text{ESR}}C_o = -1 \quad (8)$$

$$\therefore f_{Z(\text{ESR})} = \frac{-1}{2\pi R_{\text{ESR}}C_o} \quad (9)$$

In addition, another pole exists from the input impedance of the pass element (i.e., the output impedance of the amplifier, $R_{\text{par}}, C_{\text{par}}$). The approximated poles and the zero of the LDO regulator are then given by

$$P_o \approx \frac{1}{2\pi R_{\text{ds}}C_o} \approx \frac{I_L}{2\pi V_A C_o}, \quad (10)$$

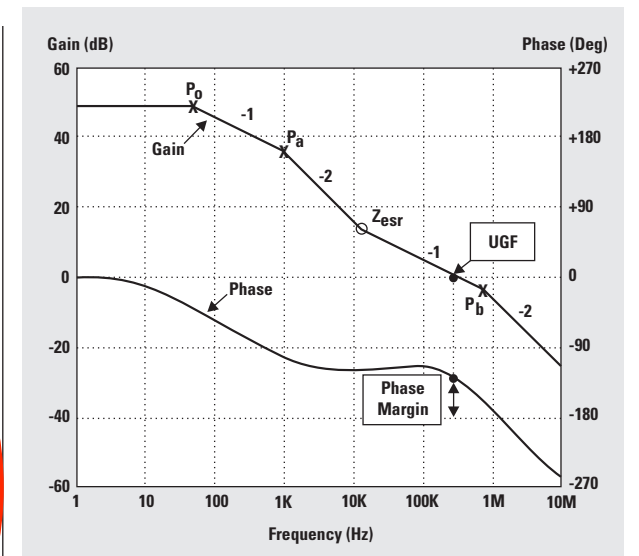
$$P_b \approx \frac{1}{2\pi R_{\text{ESR}}C_b}, \quad (11)$$

$$P_a \approx \frac{1}{2\pi R_{\text{par}}C_{\text{par}}}, \text{ and} \quad (12)$$

$$Z_{\text{ESR}} \approx \frac{1}{2\pi R_{\text{ESR}}C_o}, \quad (13)$$

where $R_{\text{ds}} \approx V_A/I_L$, $V_A = 1/\lambda$ for MOS device, and λ is the channel-length modulation parameter. Pole P_a is the only one introduced at the input of the pass device, not at the output of the device. Based upon the derived poles and zero, the typical frequency response of the LDO regulator is obtained and is shown in Figure 2. Pole P_b depends on the load current. When load current is low, a pole response occurs at relatively low frequencies, thereby degrading phase margin. Worst-case of stability arises at the extreme values of the ESR and at low load currents.

Figure 2. Typical frequency response of the LDO voltage regulator



Range of stable ESR

An LDO regulator would require an output capacitor with an output equivalent series resistor (ESR) to stabilize the control loop. As shown in Figure 3, an LDO has two poles that cause instability if it is not compensated. It is obvious that the linear regulator is unstable because the phase shift at unity gain frequency (UGF) is -180° (i.e., phase margin = 0°) due to the effects of two poles (P_o, P_a) at low

Continued on next page

Figure 3. LDO frequency response without compensation

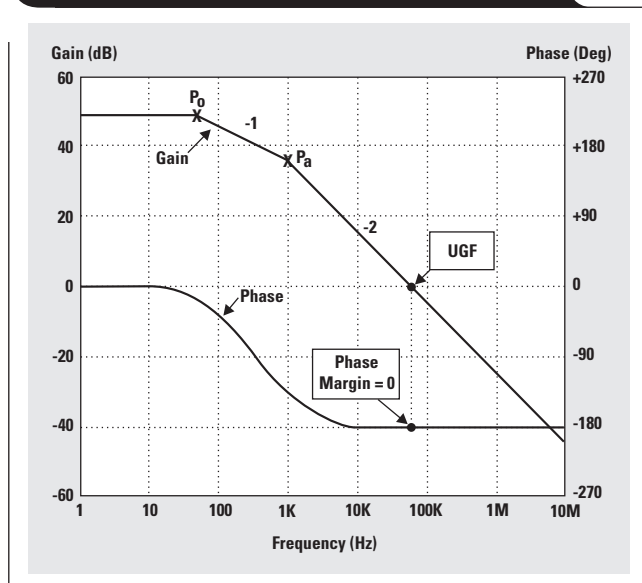
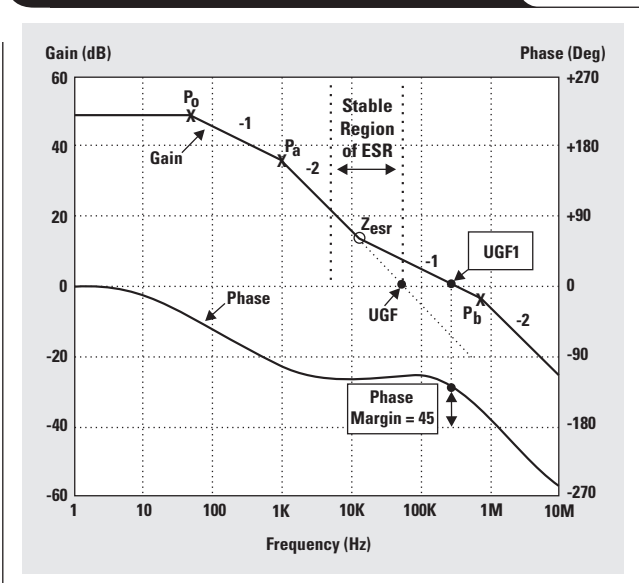


Figure 4. LDO frequency response with external compensation



Continued from previous page

frequencies. To make the regulator stable, a zero must be added, which will cancel out the phase effect of one of two poles.

The ESR of an output capacitor or a compensated series resistor (CSR) is used for the zero. Figure 4 shows how the ESR (or CSR) zero stabilizes the control loop. The zero produced by the ESR locates before UGF so that the phase margin at UGF₁ will be higher than 0°. Thus, the linear regulator becomes stable. The phase margin of the control loop at UGF always should be more than 0° for the system stability.

The ESR value should be maintained in the range that determines the loop stability. In most cases, LDO regulators have the minimum/maximum ESR values. Figures 5 and 6 show that the loop responses are unstable even though a zero is added. From Equations 11 and 13, the zero Z_{esr} and the pole P_b are determined by the ESR. When the ESR changes, Z_{esr} and P_b are shifted upward/downward and the loop stability is affected.

Figure 5 illustrates the unstable frequency response of LDO when the ESR is too high, and Figure 6 illustrates the LDO frequency response when the ESR is too low. For both cases, the phase margin at UGF is less than or equal to 0°, resulting in system instability. Figures 5 and 6 show the stable range of Z_{esr} .

Since ESR can cause instability, LDO manufacturers typically provide a graph showing the stable range of ESR values. Figure 7 shows a typical range of ESR values with respect to the output currents (TI TPS76933, 3.3-V LDO regulator). This curve is called the "Tunnel of Death." The curve shows that ESR must be between 0.1 Ω and 8 Ω . Solid tantalum electrolytic, aluminum electrolytic, and multilayer ceramic capacitors are all suitable, provided they meet the ESR requirements.

Figure 6. Unstable frequency response of LDO with ESR too low

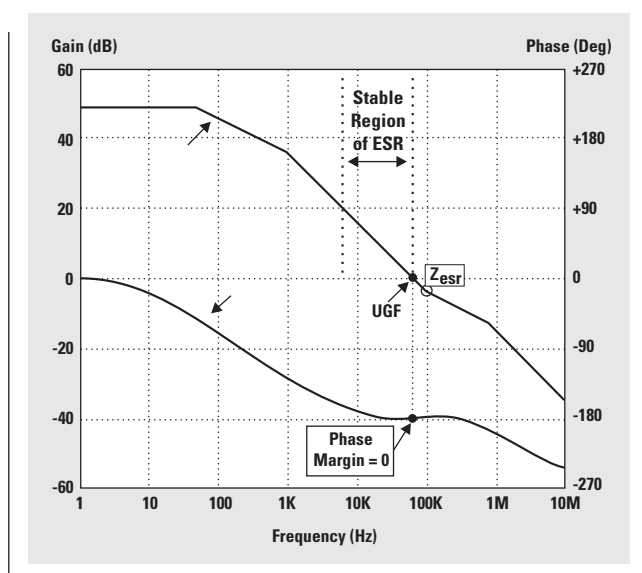
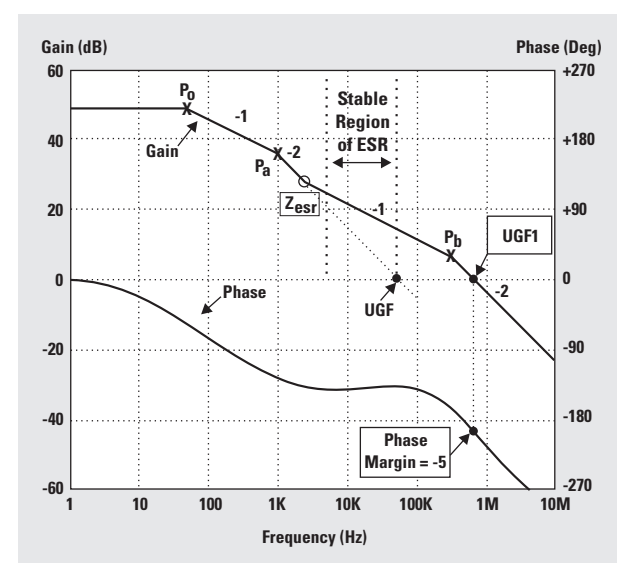


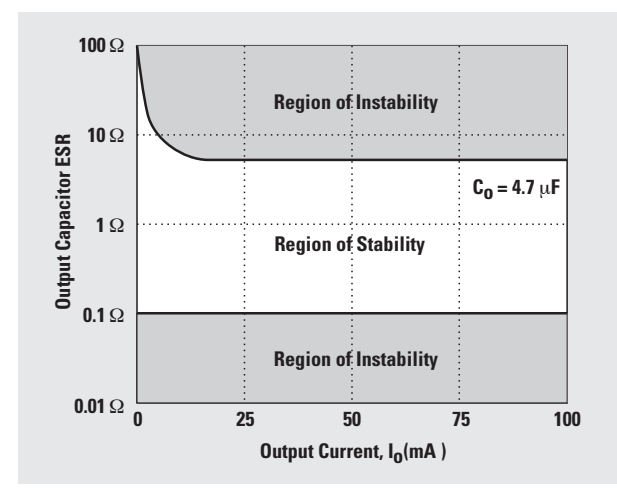
Figure 5. Unstable frequency response of LDO with ESR too high



References

1. Thomas Kugelstadt, "Fundamental Theory of PMOS Low-Dropout Linear Regulators," Application Report, Texas Instruments Inc., literature number SLVA068.
2. Bang S. Lee, "Technical Review of Low Dropout Voltage Regulator Operation and Performance," Application Report, Texas Instruments Inc., literature number SLVA072.
3. Abraham I. Pressman, *Switching and Linear Power Supply, Power Converter Design* (Rochelle Park, NJ: Hayden Book Company, Inc., 1977).
4. Gabriel Alfonso Rincon-Mora, "Current Efficient, Low Voltage, Low Drop-Out Regulators," PhD Thesis, Georgia Institute of Technology, November 1996.

Figure 7. Range of stable ESR values



IMPORTANT NOTICE

Texas Instruments Incorporated and its subsidiaries (TI) reserve the right to make corrections, modifications, enhancements, improvements, and other changes to its products and services at any time and to discontinue any product or service without notice. Customers should obtain the latest relevant information before placing orders and should verify that such information is current and complete. All products are sold subject to TI's terms and conditions of sale supplied at the time of order acknowledgment.

TI warrants performance of its hardware products to the specifications applicable at the time of sale in accordance with TI's standard warranty. Testing and other quality control techniques are used to the extent TI deems necessary to support this warranty. Except where mandated by government requirements, testing of all parameters of each product is not necessarily performed.

TI assumes no liability for applications assistance or customer product design. Customers are responsible for their products and applications using TI components. To minimize the risks associated with customer products and applications, customers should provide adequate design and operating safeguards.

TI does not warrant or represent that any license, either express or implied, is granted under any TI patent right, copyright, mask work right, or other TI intellectual property right relating to any combination, machine, or process in which TI products or services are used. Information published by TI regarding third-party products or services does not constitute a license from TI to use such products or services or a warranty or endorsement thereof. Use of such information may require a license from a third party under the patents or other intellectual property of the third party, or a license from TI under the patents or other intellectual property of TI.

Reproduction of information in TI data books or data sheets is permissible only if reproduction is without alteration and is accompanied by all associated warranties, conditions, limitations, and notices. Reproduction of this information with alteration is an unfair and deceptive business practice. TI is not responsible or liable for such altered documentation.

Resale of TI products or services with statements different from or beyond the parameters stated by TI for that product or service voids all express and any implied warranties for the associated TI product or service and is an unfair and deceptive business practice. TI is not responsible or liable for any such statements.

Following are URLs where you can obtain information on other Texas Instruments products and application solutions:

Products

| | |
|------------------|--|
| Amplifiers | amplifier.ti.com |
| Data Converters | dataconverter.ti.com |
| DSP | dsp.ti.com |
| Interface | interface.ti.com |
| Logic | logic.ti.com |
| Power Mgmt | power.ti.com |
| Microcontrollers | microcontroller.ti.com |

Applications

| | |
|--------------------|--|
| Audio | www.ti.com/audio |
| Automotive | www.ti.com/automotive |
| Broadband | www.ti.com/broadband |
| Digital control | www.ti.com/digitalcontrol |
| Military | www.ti.com/military |
| Optical Networking | www.ti.com/opticalnetwork |
| Security | www.ti.com/security |
| Telephony | www.ti.com/telephony |
| Video & Imaging | www.ti.com/video |
| Wireless | www.ti.com/wireless |

TI Worldwide Technical Support

Internet

TI Semiconductor Product Information Center Home Page
support.ti.com

TI Semiconductor KnowledgeBase Home Page
support.ti.com/sc/knowledgebase

Product Information Centers

Americas

| | | | |
|----------------|--|-----|------------------|
| Phone | +1(972) 644-5580 | Fax | +1(972) 927-6377 |
| Internet/Email | support.ti.com/sc/pic/americas.htm | | |

Europe, Middle East, and Africa

| | | | |
|-------------------|--|-----------------------|-----------------------|
| Phone | | | |
| Belgium (English) | +32 (0) 27 45 54 32 | Netherlands (English) | +31 (0) 546 87 95 45 |
| Finland (English) | +358 (0) 9 25173948 | Russia | +7 (0) 95 7850415 |
| France | +33 (0) 1 30 70 11 64 | Spain | +34 902 35 40 28 |
| Germany | +49 (0) 8161 80 33 11 | Sweden (English) | +46 (0) 8587 555 22 |
| Israel (English) | 1800 949 0107 | United Kingdom | +44 (0) 1604 66 33 99 |
| Italy | 800 79 11 37 | | |
| Fax | +49 (0) 8161 80 2045 | | |
| Internet | support.ti.com/sc/pic/euro.htm | | |

Japan

| | | | |
|----------------|--|----------|--------------|
| Fax | | | |
| International | +81-3-3344-5317 | Domestic | 0120-81-0036 |
| Internet/Email | support.ti.com/sc/pic/japan.htm | | |
| International | support.ti.com/sc/pic/japan.htm | | |
| Domestic | www.tij.co.jp/pic | | |

Asia

| | | | |
|---------------|--|-------------|--|
| Phone | | | |
| International | +886-2-23786800 | | |
| Domestic | Toll-Free Number | | Toll-Free Number |
| Australia | 1-800-999-084 | New Zealand | 0800-446-934 |
| China | 800-820-8682 | Philippines | 1-800-765-7404 |
| Hong Kong | 800-96-5941 | Singapore | 800-886-1028 |
| Indonesia | 001-803-8861-1006 | Taiwan | 0800-006800 |
| Korea | 080-551-2804 | Thailand | 001-800-886-0010 |
| Malaysia | 1-800-80-3973 | | |
| Fax | 886-2-2378-6808 | Email | tiasia@ti.com |
| Internet | support.ti.com/sc/pic/asia.htm | | ti-china@ti.com |

C011905

Safe Harbor Statement: This publication may contain forward-looking statements that involve a number of risks and uncertainties. These "forward-looking statements" are intended to qualify for the safe harbor from liability established by the Private Securities Litigation Reform Act of 1995. These forward-looking statements generally can be identified by phrases such as TI or its management "believes," "expects," "anticipates," "foresees," "forecasts," "estimates" or other words or phrases of similar import. Similarly, such statements herein that describe the company's products, business strategy, outlook, objectives, plans, intentions or goals also are forward-looking statements. All such forward-looking statements are subject to certain risks and uncertainties that could cause actual results to differ materially from those in forward-looking statements. Please refer to TI's most recent Form 10-K for more information on the risks and uncertainties that could materially affect future results of operations. We disclaim any intention or obligation to update any forward-looking statements as a result of developments occurring after the date of this publication.

Trademarks: All trademarks are the property of their respective owners.

Mailing Address: Texas Instruments
Post Office Box 655303
Dallas, Texas 75265

© 2005 Texas Instruments Incorporated