

SIM900 Series Download Tool_V1.8_User Guide

1. Normal download (for standard FW)

Open the download tool; you can see the interface as below :(**figure 1**)

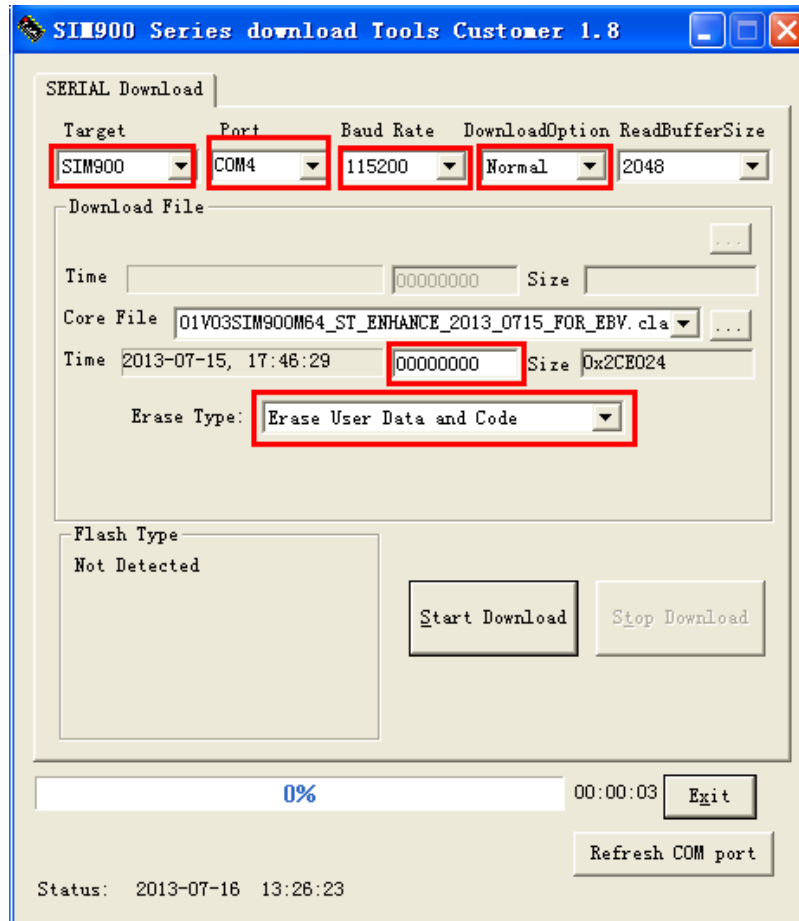


Figure 1

1-1. SERIAL Download

There are five options in this menu. **Target** (module identification), **port** (the serial port you use), **baud rate** (default is 115200) and also the **Download Option** (Normal, FOTA and Embedded AT). Please choose like above **figure 1**.

1-2. Core file

Confirm compiler FW path. If it is not default path, navigate to the correct FW path

by click "..." button.

1-3. Erase Type

Erase Type (there is two options :Erase User Data and Code\ Erase Source code), please choose **Erase User Data and Code**.

1-4. Start Download

- (1). If you upgrade module FW using SIM900 EVB board, connect the main Serial port or debug port to your computer by cable. Insert the power DC.
- (2). Turn on the **download** key .If you do not have this download key of your own developed board, pull the **power key low (to GND)** all the time during downloading.

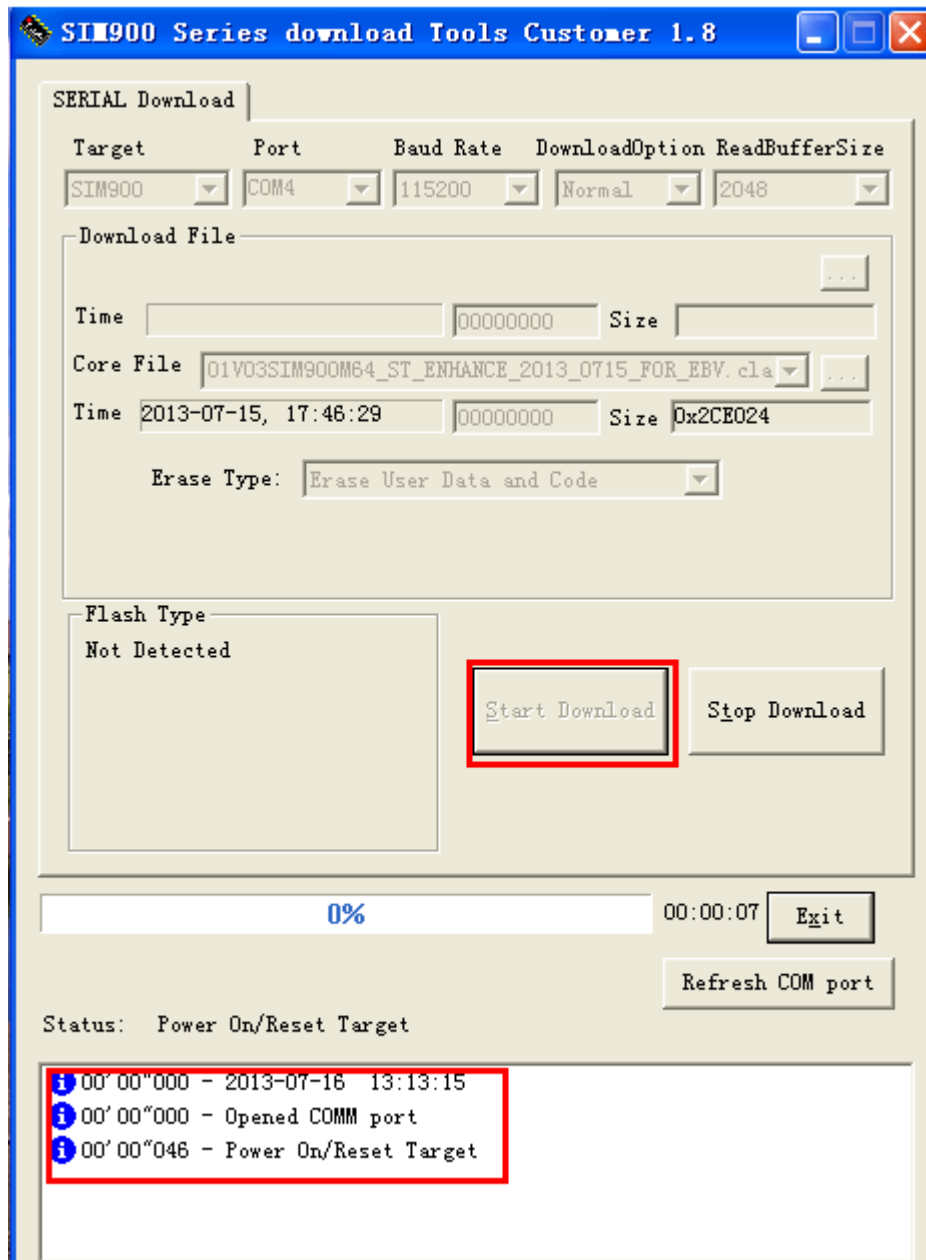


Figure 2

- (3) Click **"Start Download"**, and then switch the **"POWER"** key to ON (power on the module). →FW download is starting as **figure 2**

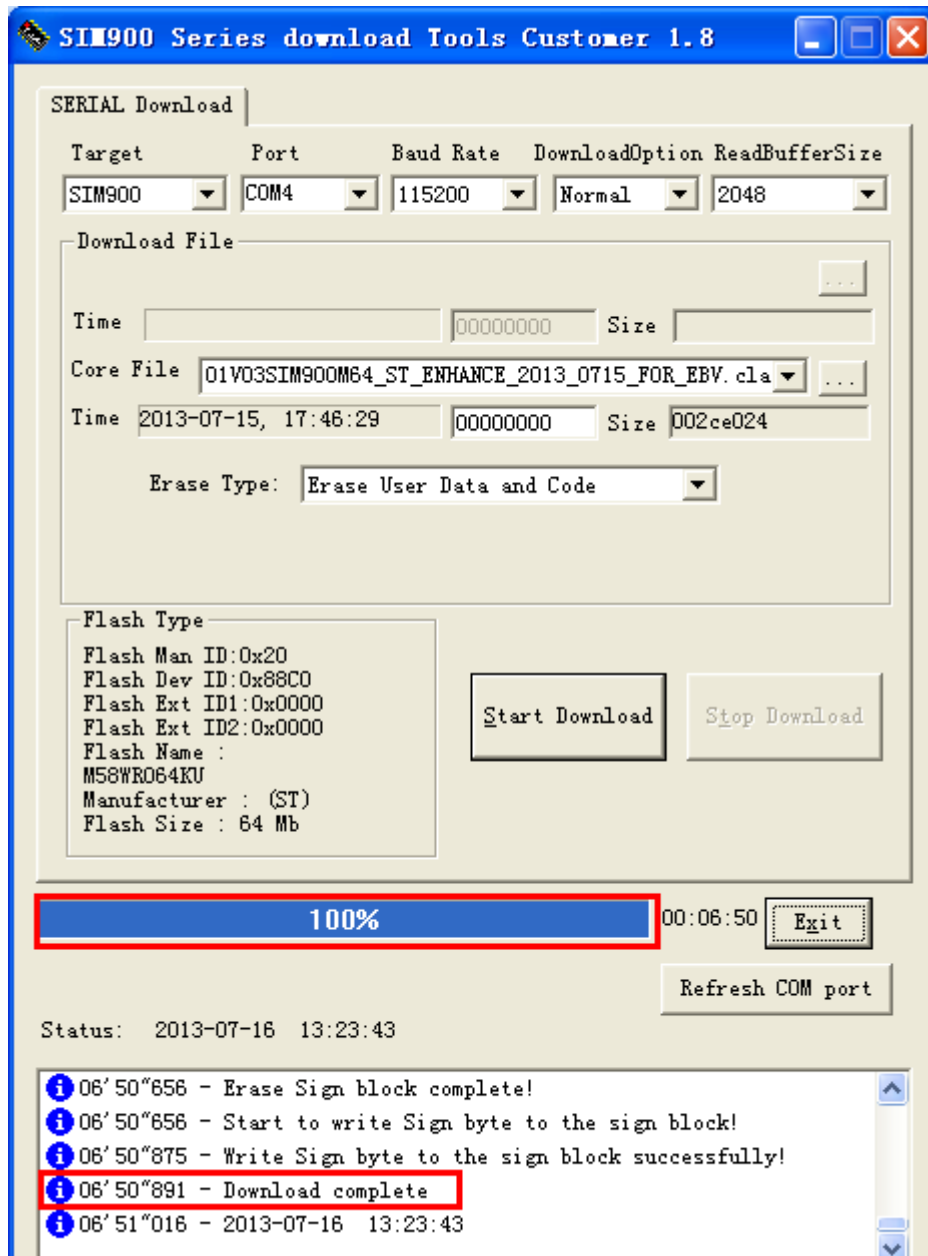


Figure 3

(4) Waiting for until it shows the “download complete”, as figure 3. then you can exit the tool and the FW has been downloaded successfully.

2. EAT download (upgrade both module core FW and APP SW)

2-1. SERIAL Download: Please note you should change **Download Option**, choose **Embedded AT**. The other options are same to **step 1-1**, you also can refer to the **figure 4** below.

2-2. Core file: Confirm core FW path. If it is not default path, navigate to the correct FW path by click “...” button.

2-3. App file: Confirm App file path. If it is not default path, navigate to the correct path of Embedded AT App file by click “...” button.

2-4. The file write address should be changed to **00400000** as the below **figure 4**.

2-5. Erase Type: choose the **Erase User Data and Code**.

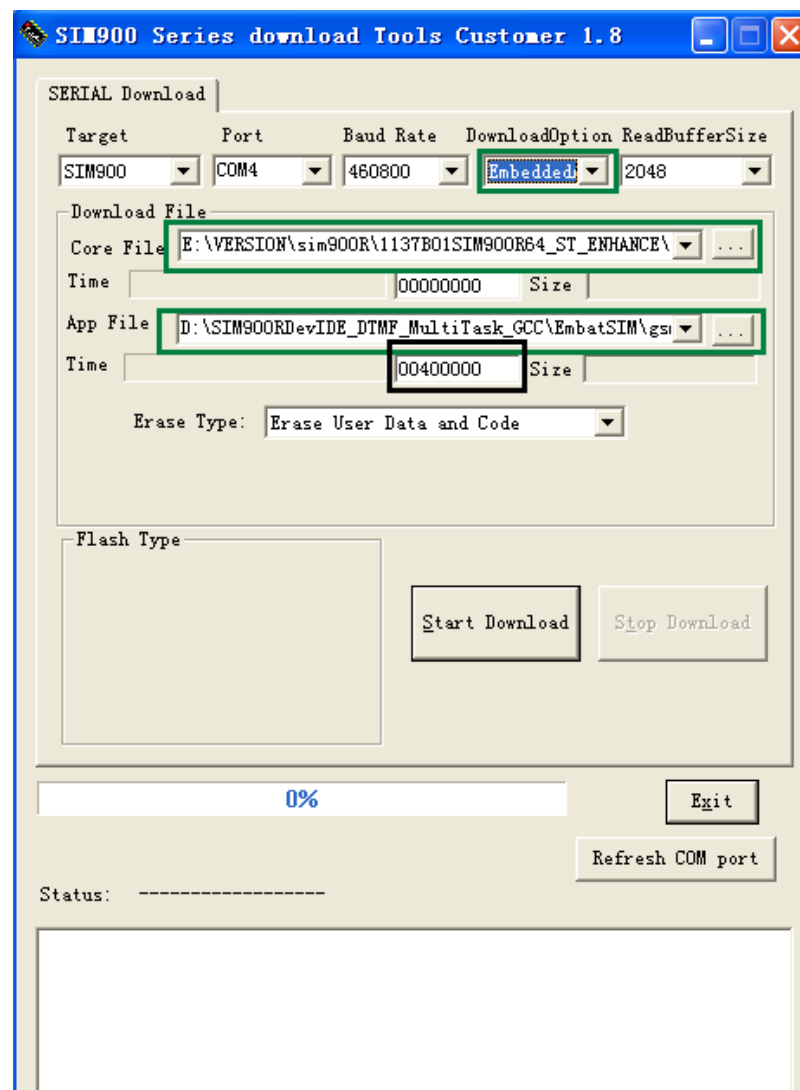


Figure 4

2-6. Start Download:

This step is the same to **Normal Download /start Download** process. Please refer to **1-4 start download** .

3. Upgrade EAT APP file only

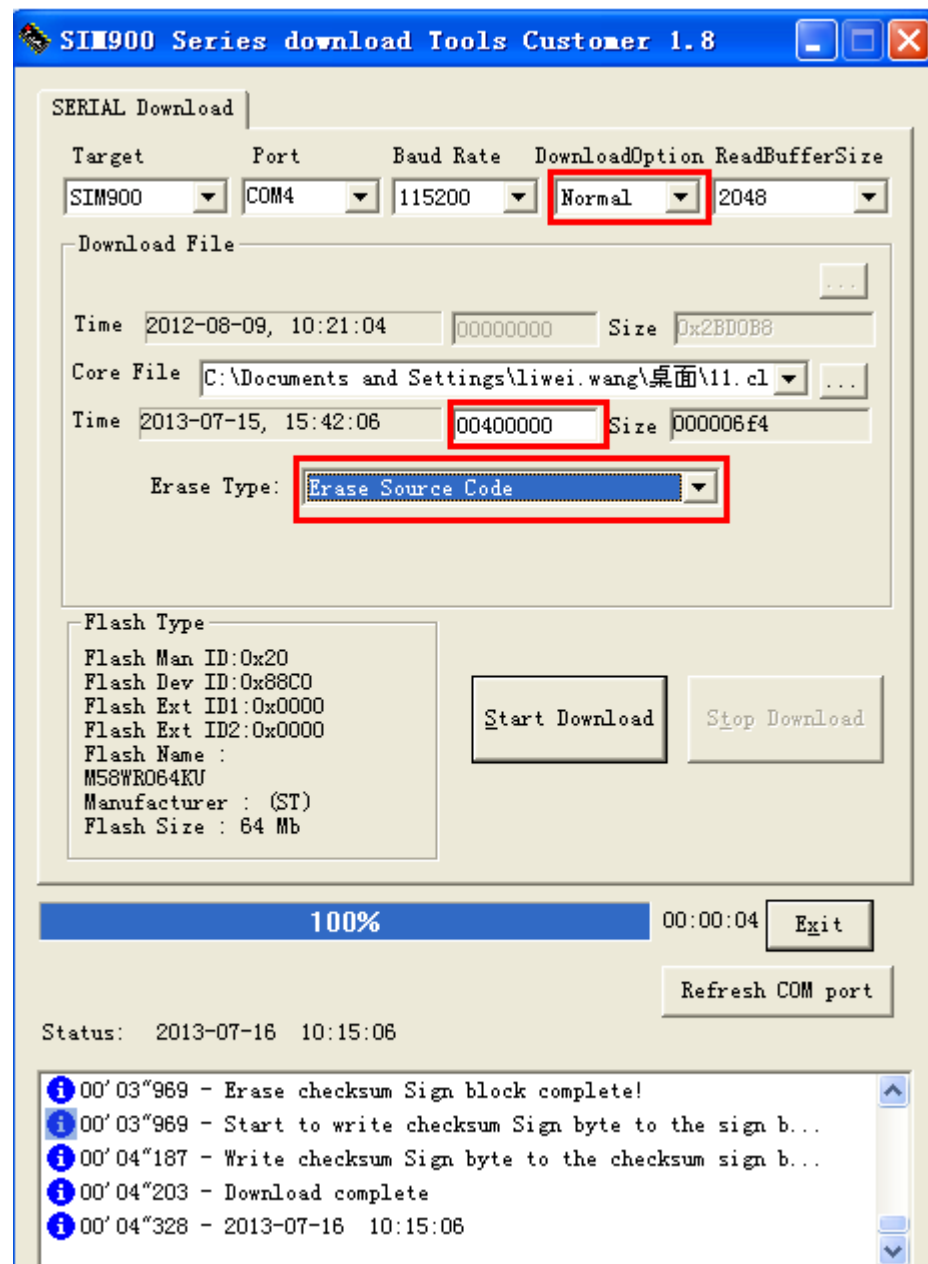


Figure 5

3-1. SERIAL Download: Please note you should change **Download Option**, choose **Normal**. The other options are same to **step 1-1**, you also can refer to the **figure 5** .

3-2. Core file: Confirm Embedded AT App path. If it is not default path, navigate to the correct path of EAT App file by click “” button.

3-3. The file write address should be changed to **00400000** as the above figure5.

3-4. Erase Type: choose the **Erase Source Code**.

3-5. Start Download:

This step is the same to **Normal Download /start Download** process. Please refer to **step 1-4**.