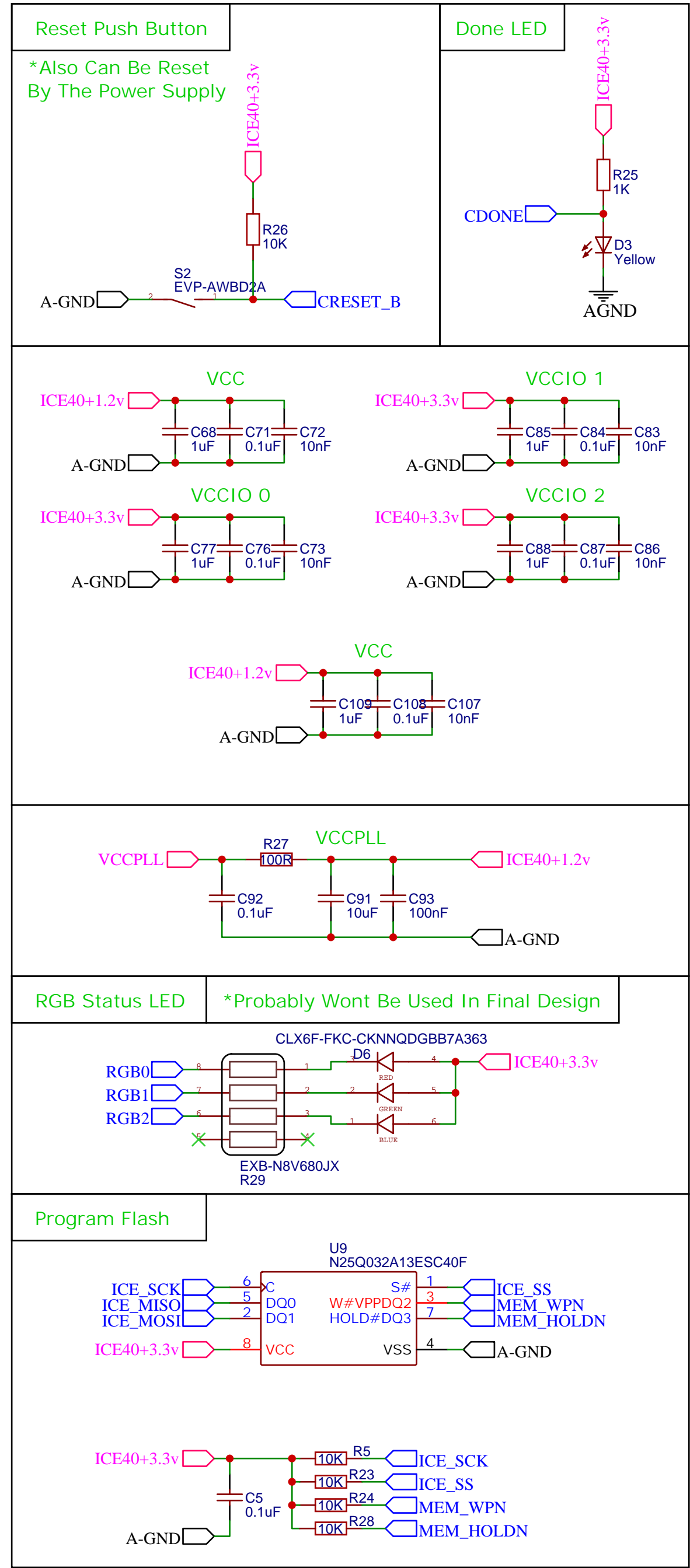
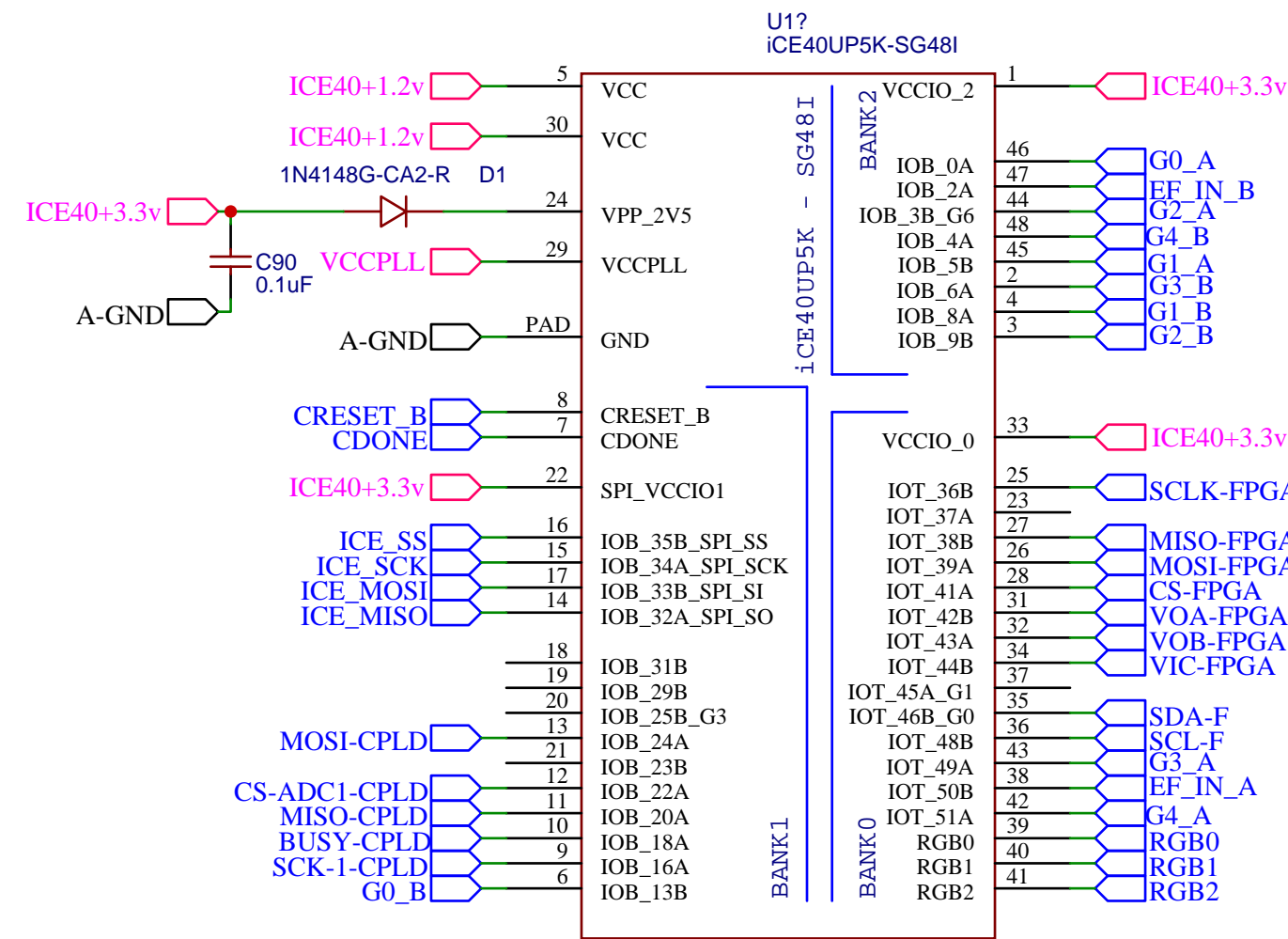
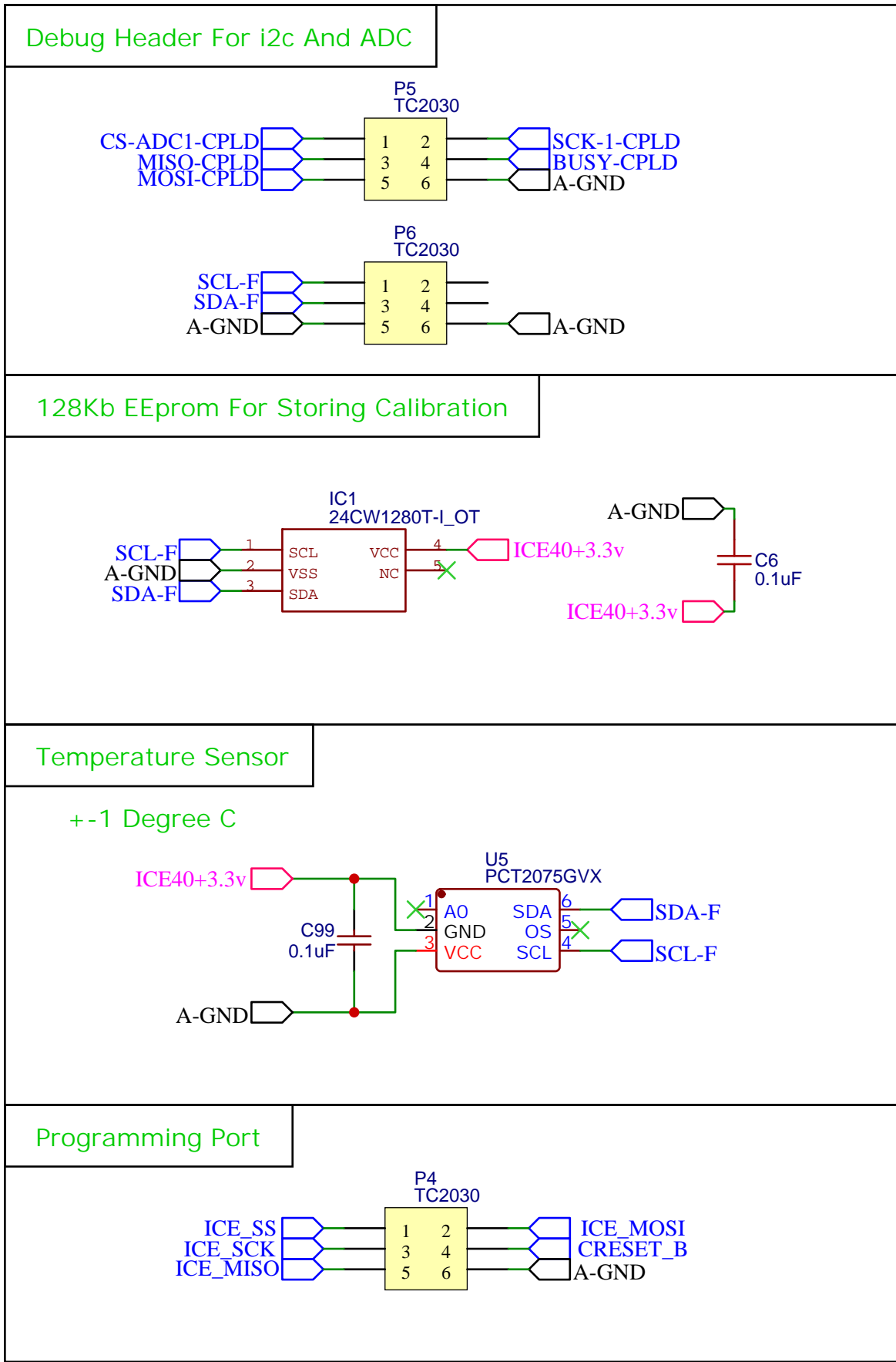
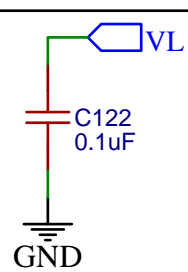
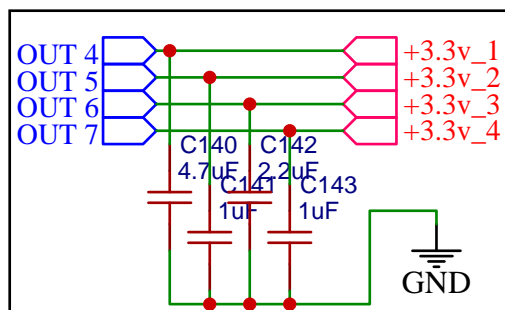


*Probably Wont Be Used, Analog FPGA Has One Too

TITLE: Digital Section		REV: 1.0
	Company: Jacob Gaming Co.	Sheet: 3/11
	Date: 2021-01-15	Drawn By: Jacob Soucek

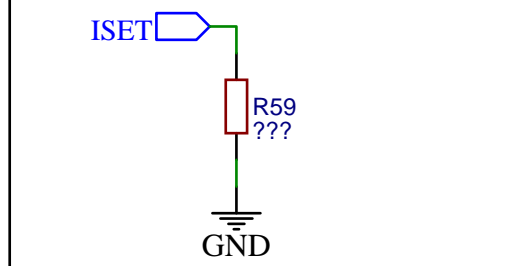
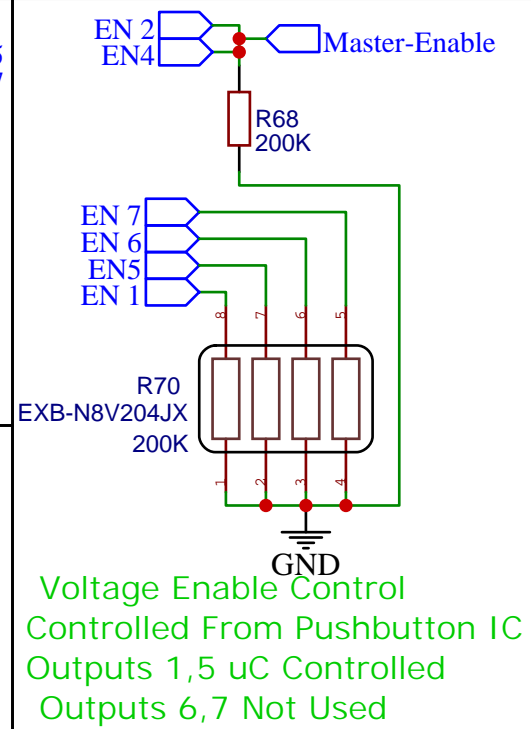
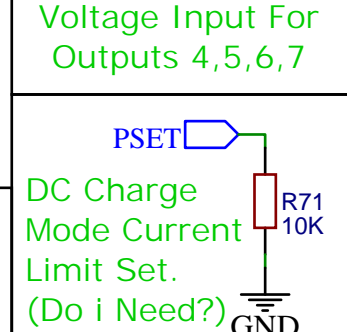
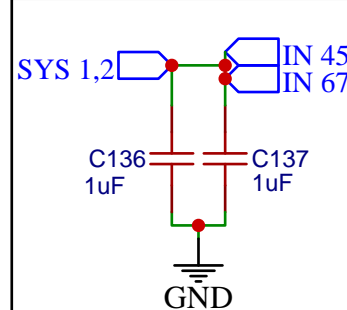
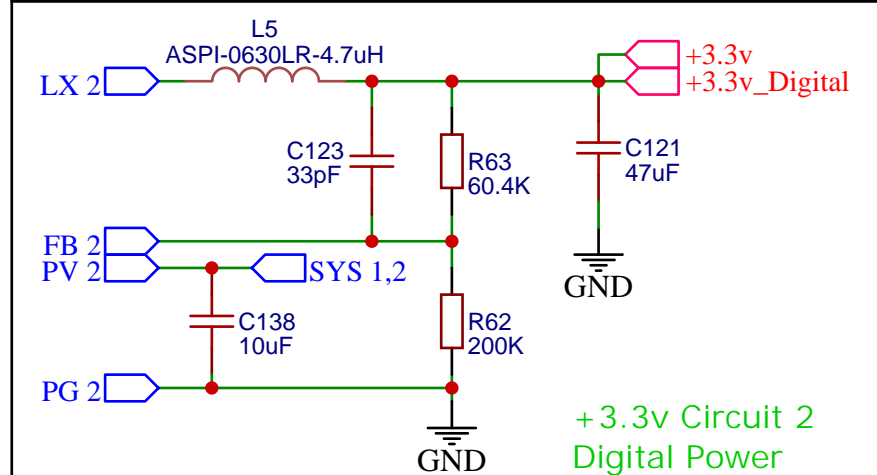
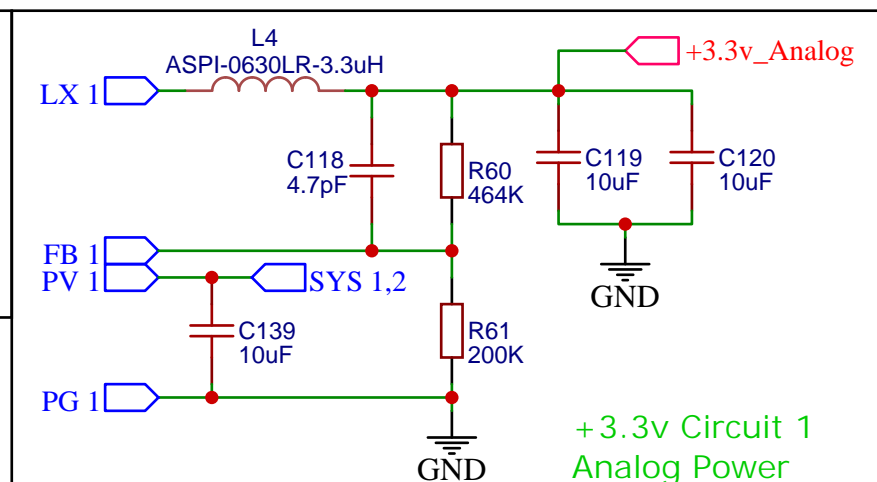
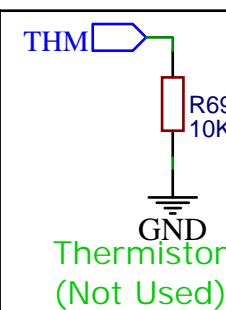
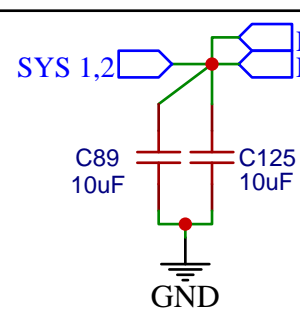




PWM Do Nothing??

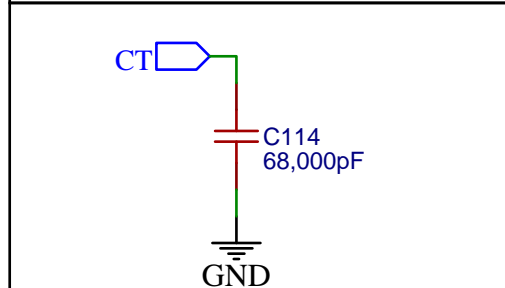
POK Indicators

CHG Indicators



Charge Current Setting

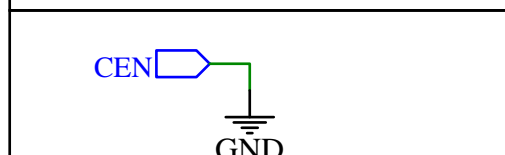
Select When Battery Selected



Charge Timer Control

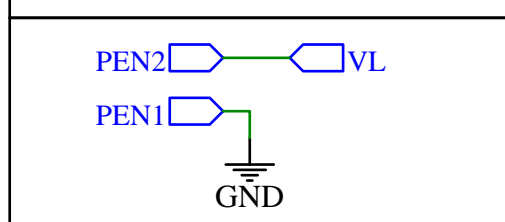
Prequal = 30min

Fast Charge = 300min



Charge Enable When

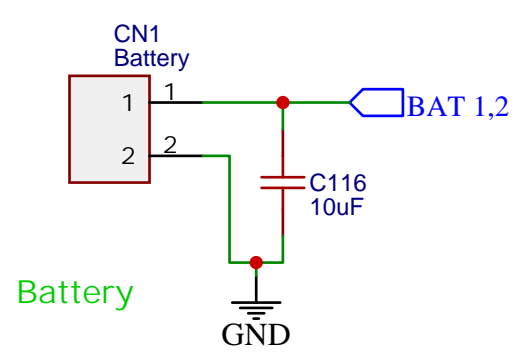
CEN = 0v



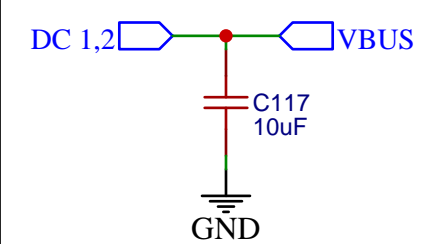
DC Input Current Limit

VPEN1 = 0V, VPEN2 = 5V

(500mA USB mode)



Battery



USB Charging Voltage

Input

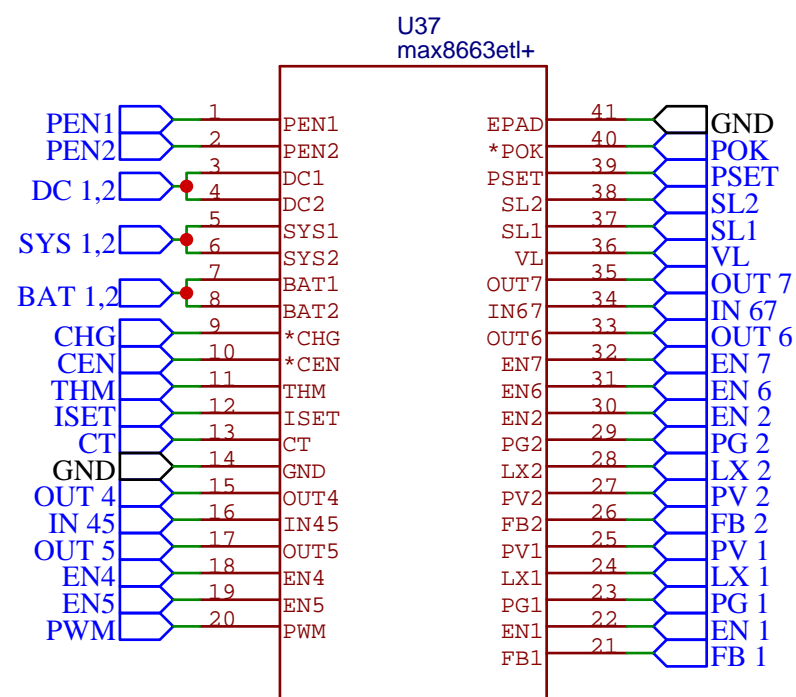
SL2

SL1

Leave Open

Out 4, 5, 6, 7

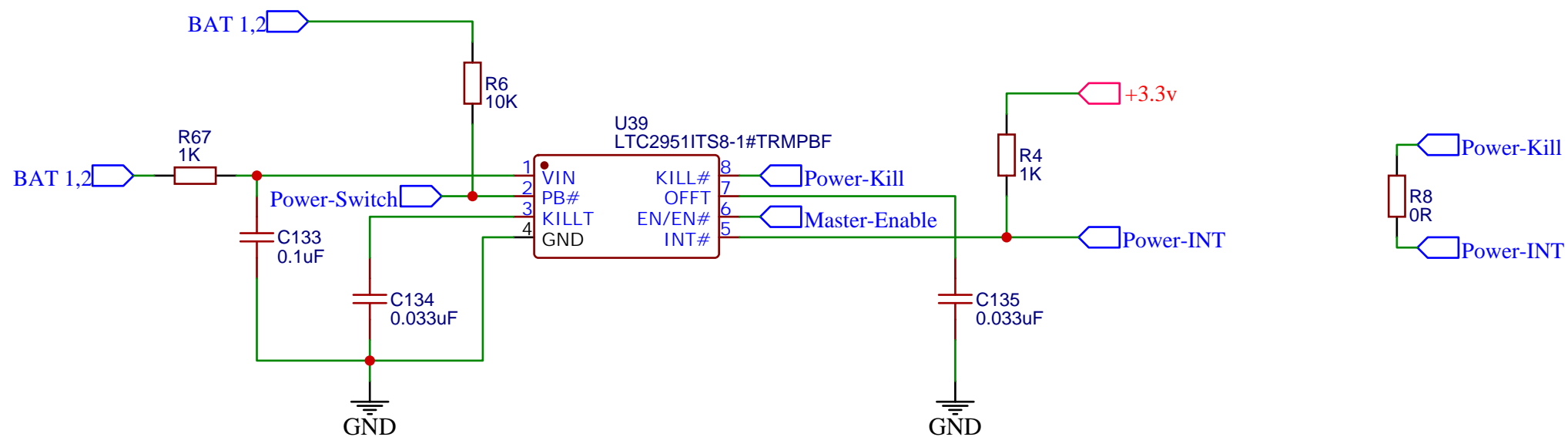
+3.3v



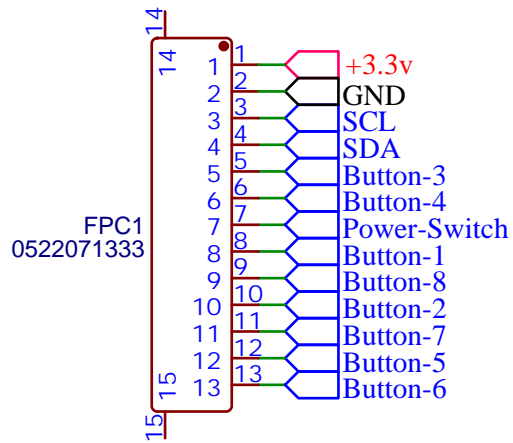
R6 Not Used, Only There In Case I Need It.

R67 Reverse Battery Protection, Might Fit OR

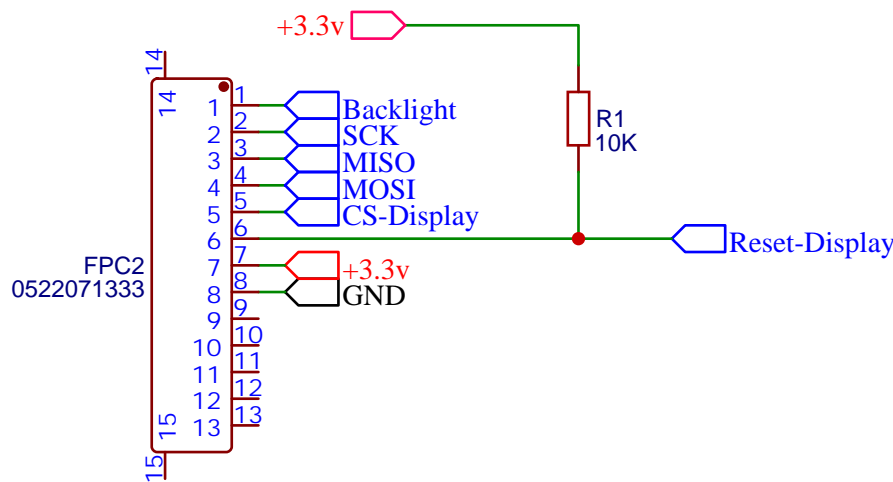
R8 Used When MCU Is Still Being Developed, Forces Kill Override



TITLE: Pushbutton Power Switch		REV: 1.0
	Company: Jacob Gaming Co.	Sheet: 7/11
	Date: 2021-02-15 Drawn By: Jacob Soucek	

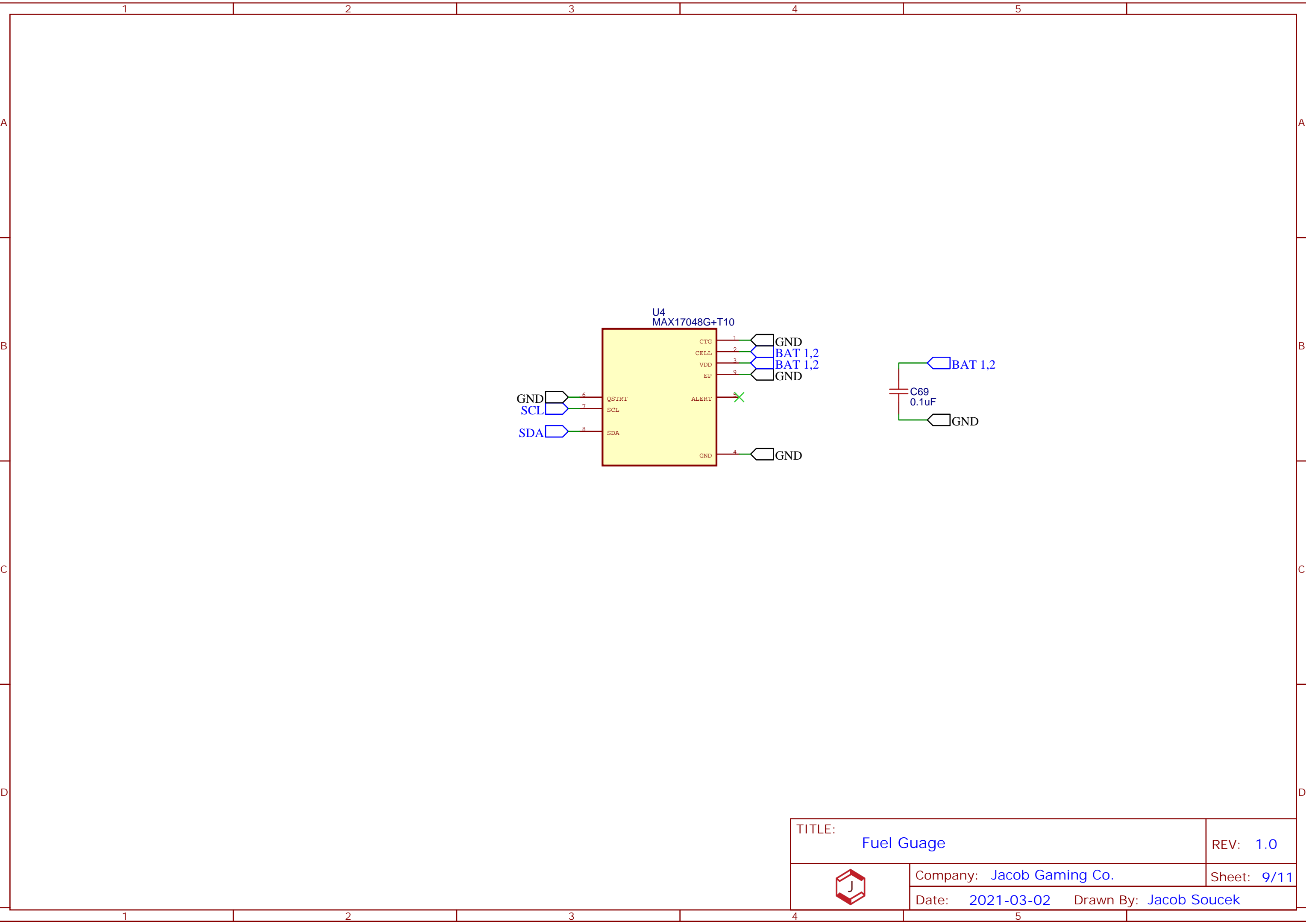


Flat Flex Connector
Keypad



Flat Flex Connector
Display Module
AMG240160P-G-W6WFDW

TITLE: Connectors		REV: 1.0
	Company: Jacob Gaming Co.	Sheet: 8/11
	Date: 2021-02-21 Drawn By: Jacob Soucek	



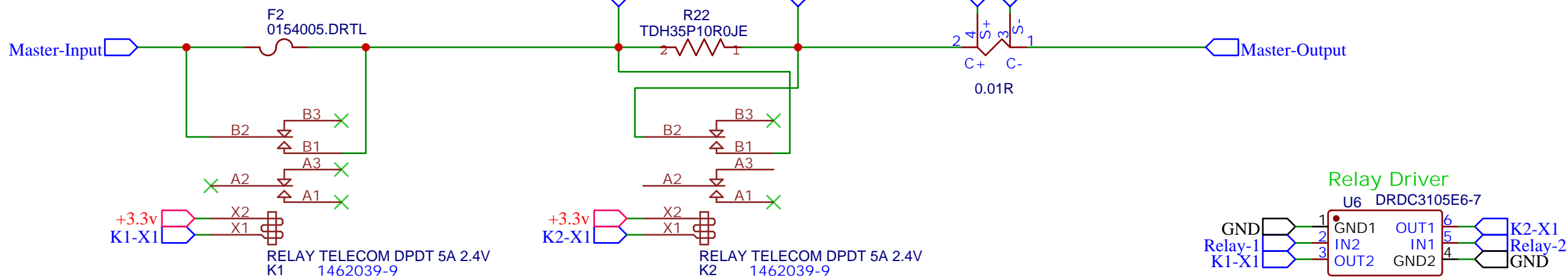
TITLE: Fuel Guage		REV: 1.0
		Sheet: 9/11
	Company: Jacob Gaming Co.	Date: 2021-03-02 Drawn By: Jacob Soucek

SHUNTS

find different 10R resistor

uA/mA
10R

mA/A
0.01R



Allows The Fuse To Be Bypassed For
Ultra Low Dropout Operations. (2A Fuse)

PGA

Programmable Gain Device Sets The Ranges

24-Bit ADC

X10 Op Amp Amplification

