

# DesignCon 2010

Effect of conductor profile on the insertion loss,  
phase constant, and dispersion in thin high frequency  
transmission lines

Allen F. Horn III, Rogers Corporation  
[Al.horn@rogerscorp.com](mailto:Al.horn@rogerscorp.com) , phone 1-860-779-5512

John W. Reynolds, Rogers Corporation

Patricia A. LaFrance, Rogers Corporation

James C. Rautio, Sonnet Software  
[Rautio@sonnetsoftware.com](mailto:Rautio@sonnetsoftware.com), 1-315-453-3096

## Abstract:

It has been long known that conductor surface roughness can increase the conductor loss as frequency increases to the extent that the signal skin depth is comparable or smaller than the scale of the conductor roughness. In the present work, we experimentally show that the increase in conductor loss is larger than the factor of two predicted by the most widely used roughness factor correction correlations. This is consistent with the findings of a more recent theoretical paper on the effect of random roughness on conductor loss.

We also experimentally show that increasing the conductor roughness alone increases the phase constant, or effective dielectric constant, in thin circuitry by up to 15% and substantially increases dispersion. Conductor profile is clearly a major variable in the performance of thin high frequency circuits.

A subtle adjustment to the conductor model in Sonnet Software related to the conductor roughness accounts quantitatively for both the insertion loss and phase constant effects.

## Authors' Biographies

Allen F. Horn, III, Associate Research Fellow, received a BSChE from Syracuse University in 1979, and a Ph. D. in chemical engineering from M.I.T. in 1984. Prior to joining the Rogers Corporation Lurie R&D Center in 1987, he worked for Dow Corning and ARCO Chemical. He is an inventor/co-inventor on 15 issued US patents in the area of ceramic or mineral powder-filled polymer composites for electronic applications.

John W. Reynolds, Senior Engineering Assistant, received a BSEE in 1980 from the University of Connecticut. He joined the Rogers Corporation Lurie R&D Center in 1987 and specializes in the electrical characterization of high frequency materials.

Patricia A. LaFrance, Engineering Assistant, has 20 years experience in the formulation and testing of composite materials for industrial and electronic applications. She joined the Rogers R&D Center in 1997.

James C. Rautio received a BSEE from Cornell in 1978, a MS Systems Engineering from University of Pennsylvania in 1982, and a Ph. D. in electrical engineering from Syracuse University in 1986. From 1978 to 1986, he worked for General Electric, first at the Valley Forge Space Division, then at the Syracuse Electronics Laboratory. From 1986 to 1988, he was a visiting professor at Syracuse University and at Cornell. In 1988 he went full time with Sonnet Software, a company he had founded in 1983. In 1995, Sonnet was listed on the Inc. 500 list of the fastest growing privately held US companies, the first microwave software company ever to be so listed. Dr. Rautio was elected a fellow of the IEEE in 2000 and received the IEEE MTT Microwave Application Award in 2001. He has lectured on the life of James Clerk Maxwell over 100 times.

## Introduction:

In 1949, S. P. Morgan<sup>1</sup> published a paper numerically modeling the effect of regular triangular and square patterned grooves in a conductor surface on the conductor loss at different frequencies. As the skin depth of the signal approaches the height of the grooves, the conductor loss increases. With grooves with an aspect ratio of about 1:1, the maximum increase of a rough conductor is a factor of two for a signal traveling perpendicular to the grooves and considerably smaller for a signal traveling parallel. A simple explanation of the mechanism is that the small skin depth signal must travel along the surface of the rough conductor, effectively increasing the path length and conductor resistance.

The Morgan correlation was adapted into an automated microstrip insertion loss and impedance calculation described by Hammerstad and Jensen<sup>2</sup> (H&J). The correlation is incorporated as a multiplicative correction factor  $K_{SR}$  to the attenuation constant calculated for a smooth conductor.

$$\alpha_{\text{cond, rough}} = \alpha_{\text{cond, smooth}} \cdot K_{SR} \quad (1)$$

where  $\alpha_{\text{cond, smooth}}$  is the attenuation constant calculated for a smooth conductor and

$$K_{SR} = 1 + \frac{2}{\pi} \arctan \left( 1.4 \left[ \frac{R_{RMS}}{\delta} \right]^2 \right) \quad (2)$$

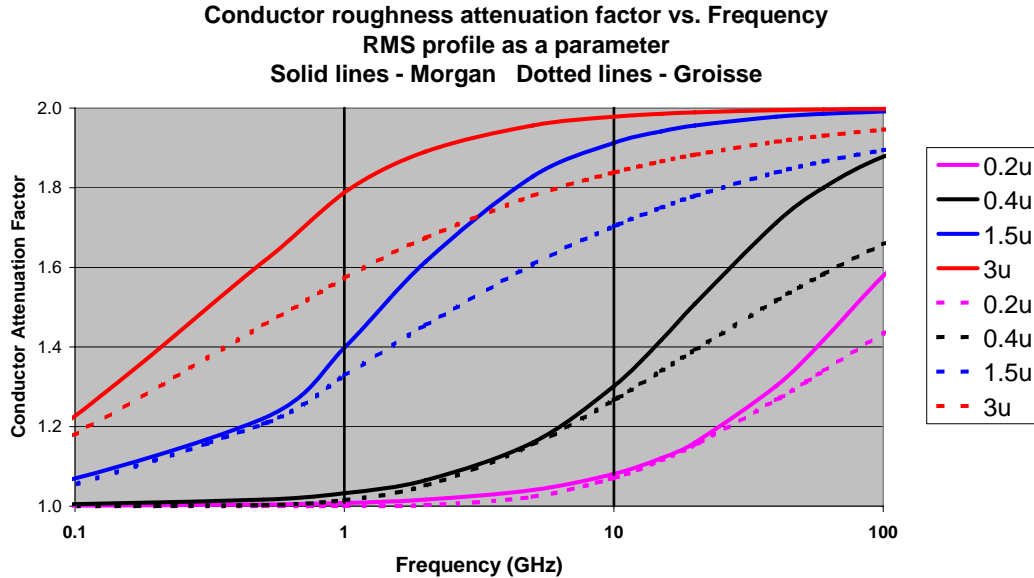
where  $R_{RMS}$  is the RMS value of the conductor roughness and  $\delta$  is the skin depth. It should be noted that both  $\alpha_{\text{cond, smooth}}$  and  $K_{SR}$  are functions of frequency. When the ratio of  $R_{RMS}/\delta$  is small, as with a smooth conductor or at low frequencies where the skin depth is large, the value of  $K_{SR}$  is close to one. As the ratio becomes large with higher profile conductors and higher frequencies, the value of  $K_{SR}$  approaches two. This correlation predicts a “saturation effect,” i.e., that the maximum effect of the conductor roughness would be to double the conductor loss. This result also implies that the conductor loss for a lower profile foil will eventually approach that of a rough foil as frequency increases.

Groisse et al<sup>3</sup> describe a similar factor  $C_s$  for correcting conductor loss for the surface roughness and skin depth

$$C_s = 1 + \exp \left( - \left[ \frac{\delta}{2R_{RMS}} \right]^{1.6} \right) \quad (3)$$

using the same symbols as in equation 2. Similar to equation 2, the conductor roughness attenuation factor “saturates” and reaches a maximum value of 2.

The calculated Morgan (solid lines) and Grosse (dotted lines) conductor profile correction factors are compared graphically versus frequency for values of the RMS surface profile from 0.2 to 3μ (figure 1). They exhibit good agreement at lower frequencies, but deviate as frequency increases. The Morgan correlation predicts a higher conductor loss where the deviations occur. Both correlations will saturate at a value of 2, but the Morgan factor reaches the maximum value at a lower frequency.



Historically, the Morgan correlation has agreed reasonably well with measured values for typical microwave circuit substrates that are generally thicker than those currently used in digital applications and at moderate frequencies. Figure 2 is a plot of “differential insertion loss data” from 1 to 10 GHz for an 0.020” thick DK = 2.2 type GR PTFE-random glass laminate with 50 ohm transmission lines clad with copper foils with profiles ranging from 0.4μ RMS to 3.0 μ RMS. These are compared with the values calculated using the method of Hammerstad and Jensen for smooth foil and the “maximally rough” increase of a factor of two in conductor loss. The data show good agreement with the calculated values bracketing the measured data.

It is textbook<sup>4</sup> knowledge that the loss of a medium contributes to the phase constant as well as the attenuation constant, in the exact solution. The values for a homogeneous medium are given by

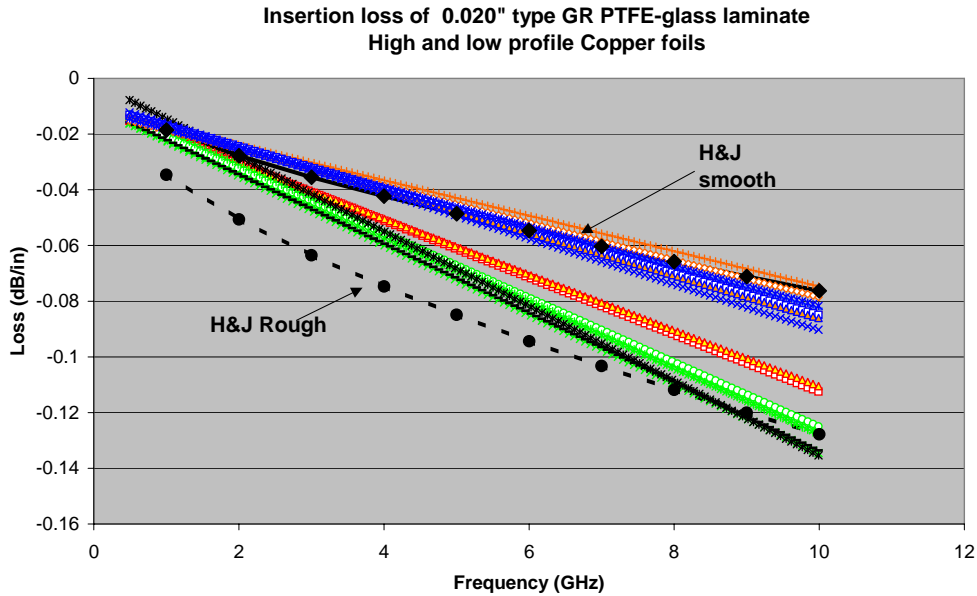
$$\alpha = \omega \sqrt{\mu \epsilon} \left\{ \frac{1}{2} \left[ \sqrt{1 + \left( \frac{\sigma}{\omega \epsilon} \right)^2} - 1 \right] \right\}^{\frac{1}{2}} \quad (4)$$

$$\beta = \omega\sqrt{\mu\epsilon}\left\{\frac{1}{2}\left[\sqrt{1+\left(\frac{\sigma}{\omega\epsilon}\right)^2}+1\right]\right\}^{\frac{1}{2}} \quad (5)$$

Where  $\alpha$  is the attenuation constant,  $\beta$  is the phase constant,  $\omega$  is the angular frequency,  $\epsilon$  is the permittivity,  $\mu$  is the permeability, and  $\sigma$  is the conductivity of the medium. While equations 4 and 5 apply only to a homogeneous medium, the general concept that loss (as represented by  $\sigma$ ), will influence the phase constant applies to practical circuitry as well.

It should also be noted that in many of the simpler circuit models and simulators, the phase constant in a “good dielectric” is approximated by

$$\beta = \omega\sqrt{\mu\epsilon} \quad (6)$$



**Figure 2**

In the present work, we show data that demonstrate significant deviations from the behavior described by these correlations that are caused by the conductor profile. In particular:

- a) Conductor roughness can cause more than a factor of 2 increase in conductor loss.
- b) “Saturation” does not occur, at least up to 50 GHz, i.e., a lower profile foil will exhibit lower conductor loss than a higher profile foil even at higher frequencies

- c) There is an unexpected influence of conductor profile on the phase constant that is particularly evident in thinner laminates. The effect is larger than predicted simply by including the loss and appears to be directly related to the profile itself.

## Literature Review

Several recent papers have examined the effect of conductor roughness on the insertion loss of PCB-based transmission lines.<sup>5-9</sup> Brist et al<sup>5</sup> and Liang et al<sup>6</sup> used the Morgan correlation (equation 2) to achieve a causal model of laminate performance that agreed well with measured data up to 20 GHz. Hinaga et al<sup>7</sup> used a similar correlation to obtain more accurate dielectric loss values. Chen<sup>8</sup> used numerical EM modeling of a rough conductor with electroless nickel-immersion gold plating and achieved good agreement with measured data. Tsang et al<sup>9</sup> have performed numerical and analytical simulations that show that for multiscale rough surfaces (in contrast to the periodic surfaces treated by Morgan), saturation does not occur and increases of greater than a factor of two in conductor loss can occur.

The present authors found only two recent papers directly addressing the effects of conductor profile on the phase constant. Ding et al<sup>10</sup> have conducted modeling of wave propagation in a randomly rough parallel plate waveguide. They state “the phase angle of the coherent wave shows that the rough waveguide exhibits more phase shift than a smooth waveguide corresponding to an increase in phase constant,” though the magnitude of the effect is not quantified.

Deutsch et al<sup>11</sup> measured the relative dielectric constant,  $\epsilon_R$ , of 0.0025” and 0.010” thick samples of FR4 laminate clad with rough and smooth copper foil using the “full sheet resonance” test method<sup>12</sup>. The calculated  $\epsilon_R$  of the thin substrate clad with the rough foil was approximately 15% higher than that of the same thickness substrate with smooth foil. The increase in calculated  $\epsilon_R$  of the thin substrate clad with the smooth foil was considerably lower. Modeling with both a three dimensional, full-wave electromagnetic field solver and a two dimensional code that included the detailed profile of the conductors confirmed the approximate magnitude of the measured results. The authors attribute the increase in calculated  $\epsilon_R$  to the increase in inductance caused by the conductor profile. Both the models and measured data also show an increase in dispersion (frequency dependence of  $\epsilon_R$ ) that is also caused by the effect of conductor profile on inductance.

## Samples and Experimental Methods

### Microstrip laminate samples

Fifty-ohm microstrip transmission lines were photo-lithographically etched onto copper foil clad Rogers ULTRALAM® 3850 LCP (liquid crystal polymer) laminates of thicknesses of 0.004” to 0.020”. The ULTRALAM 3850 laminate makes an excellent test vehicle for circuit properties. This material is a glass fabric-free, pure resin circuit substrate that relies on the inherently low CTE of the oriented LCP film to achieve a good

in-plane CTE match to the copper foil. Since the ULTRALAM 3850 substrate consists of a single pure substance, the variation in the dielectric properties is inherently low and there is no question of “glass to resin ratio” affecting the dielectric properties.

The samples were made in thicknesses increments of 0.004” from 0.004” to 0.020” by plying up 0.004” sheets and laminating them in an oil-heated flat bed press.

The 50-ohm line widths were calculated using the method of Hammerstad and Jensen that is incorporated into Rogers Corporation’s impedance calculator program, MWI. The MWI program incorporates equation 2 to correct the conductor loss for conductor profile. However, since the method of H&J uses the simplified equation for the phase constant (equation 6), changing the conductor loss does not alter the calculated phase constant.

### Copper foil cladding and profile measurements

The majority of planar circuit substrates are clad with one of three types of commercially available copper foil specifically manufactured for that purpose: rolled annealed, (RA), electrodeposited (ED) and reverse treated (RT). The foils are treated by the foil manufacturers with different types of treatments to improve and preserve adhesion to different types of circuit substrates. Historically, high profile (“rough”) foils have been used to increase adhesion to the dielectric material while lower profile foils are used to improve etch definition or reduce conductor loss.

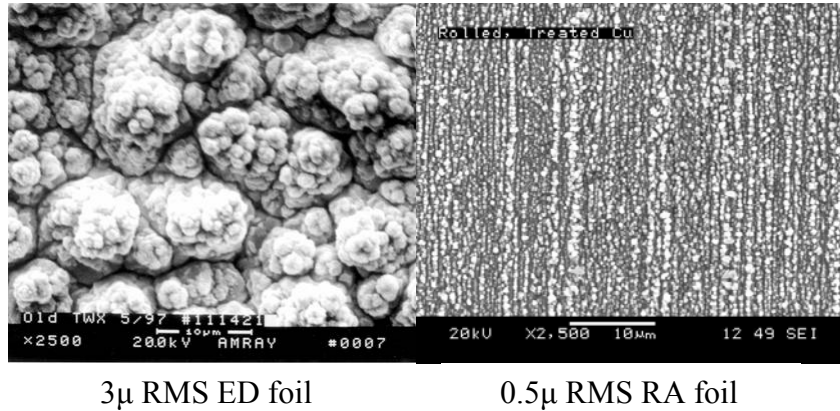
The surface profiles in the current work have been characterized using a Veeco Metrology Wyko® NT1100 optical profiling system. The instrument’s operation is based on white light interferometry. This non-contact method generates a three dimensional image of the surface topography with a resolution of about 1 nm in a 1 mm square area. The profile can be characterized by a wide variety of different statistics, including  $r_z$ , the peak-to-valley roughness,  $r_q$  (or  $R_{RMS}$ ), the root-mean-square roughness, and the surface area index.  $R_{RMS}$  is most widely used in characterizing conductor roughness in high frequency electrical applications.

RA (rolled annealed) foil is produced from an ingot of solid copper by successively passing it through a rolling mill. After rolling, the foil itself is very smooth, with an RMS profile ( $R_{RMS}$ ) of 0.1 to 0.2  $\mu$ . For printed circuit substrate applications, the foil manufacturer additively treats the rolled foil, increasing the  $R_{RMS}$  to 0.4 to 0.5  $\mu$  on the treated side.

ED (electrodeposited) foil is produced by plating from a copper sulfate solution onto a slowly rotating polished stainless steel drum. The “drum side” of ED foil exhibits an  $R_{RMS}$  of about 0.1 to 0.2  $\mu$ , similar to untreated RA foil. The profile of the “bath side” of the plated foil is controlled by the plating conditions, but is considerably higher in profile than the drum side. The ED foil manufacturer generally applies a further plated treatment to the bath side of the foil for improved adhesion and chemical compatibility with the intended dielectric material. ED foils have historically been manufactured with  $R_{RMS}$  values in the range of 1 to 3  $\mu$ . The 2500X SEM photograph in Figure 3 visually

demonstrates the difference between a high profile ( $3\mu$  RMS) ED foil and a low profile ( $0.5\mu$  RMS) RA foil.

2500X SEM photos of treated copper foil



**Figure 3**

**RT (reverse-treated)** foil is produced from an electro-deposited based foil. To produce RT foil, the adhesion promoting treatment is applied to the drum side of the base foil. In our experience, the  $R_{RMS}$  values for RT foil are typically **0.5 to  $0.7\mu$** .

In the present study, samples were clad with one type of RA foil with an  $R_{RMS}$  of  $0.4\mu$ , three grades of RT foil with  $R_{RMS}$  values of 0.5, 0.6 and  $0.7\mu$ , and two grades of ED foils with  $R_{RMS}$  values of 1.5 and  $3.0\mu$ .

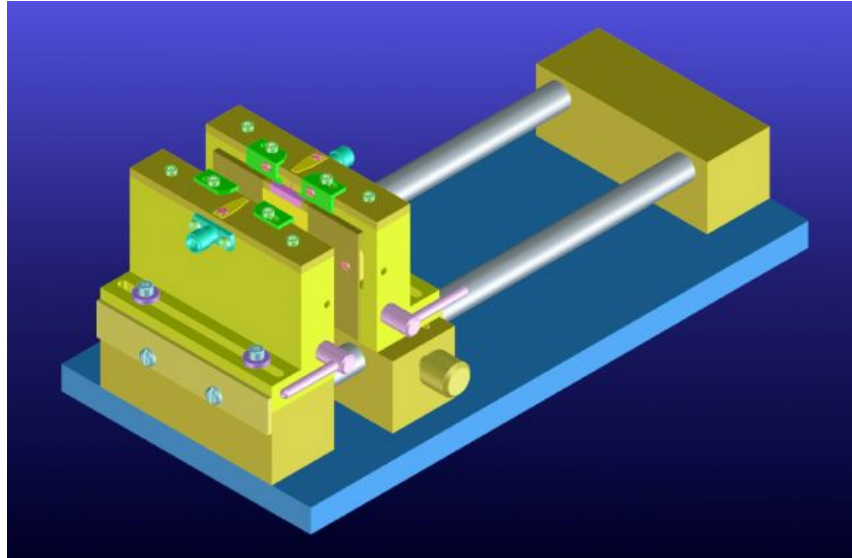
## Circuit Performance Measurements

The microstrip samples were held in an Intercontinental Microwave W-7000 Universal Substrate Fixture (figure 4), which provides a rapid set-up, low return loss transition from coaxial cable to microstrip. The set-up was SOLT calibrated to the cable ends. The  $S_{11}$ ,  $S_{21}$ , and phase length of 3.5" and 7.0" long samples were measured using an Agilent PNA-L 50 GHz network analyzer.  $S_{11}$  was generally lower than  $-20$  dB over the frequency range recorded. The  $S_{21}$  values and phase length values of the short samples were subtracted from those of the long samples and divided by the difference in length to yield the transmission line's insertion loss (dB/inch) and differential phase length (radians/inch).

## Results

Insertion loss results up to 50 GHz (figure 5) for copper foils with profiles of 0.5, 0.7, 1.5, and  $3.0\mu$  on the 0.004" thick LCP dielectric material show a number of interesting features. The measured data for the  $0.5\mu$  profile foil nearly match the line calculated for smooth foil using the method of H&J and the MWI impedance calculator. The line

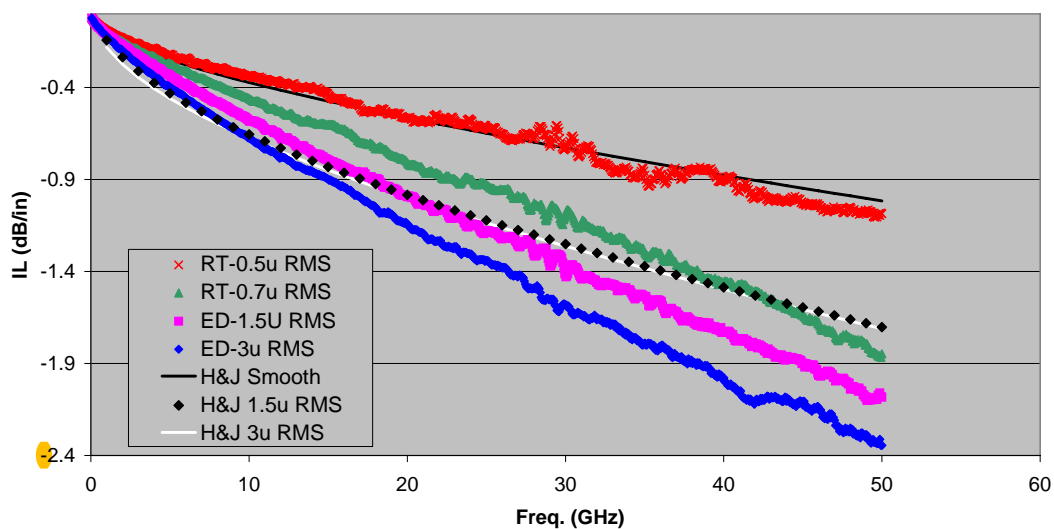




Intercontinental Microwave W-7000 universal substrate fixture  
**Figure 4**

calculated for conductor profile of  $1.5\mu$  (white line) matches the measured data at low frequencies, but at frequencies higher than about 20 GHz, the measured data are substantially higher in loss than the calculated data. The same general features are exhibited by the  $3\mu$  profile data measured and calculated data. The calculated line for  $3\mu$  profile (black diamonds) matches the measured data up to about 10 GHz. At higher frequencies, the measured data exhibit substantially higher insertion loss than the calculated line.

**Insertion loss of various copper foils**  
**50 ohm microstrip TL on 0.004" LCP laminate**

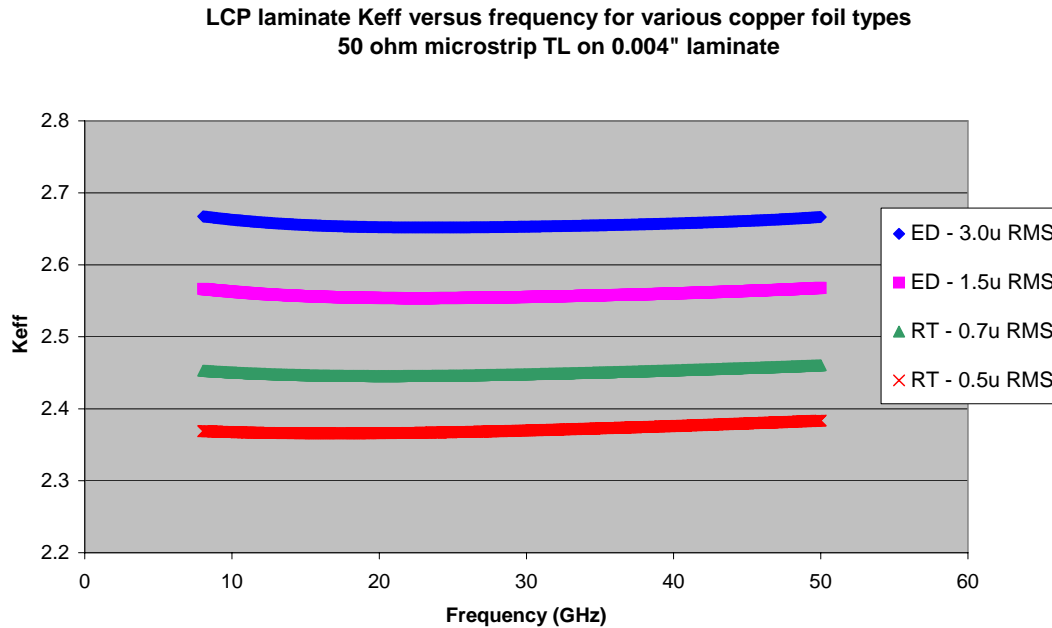


**Figure 5**

One should also note that the calculated insertion loss for the 1.5 $\mu$  and 3 $\mu$  profile conductors are essentially identical beyond about 15 GHz, while the measured data show that the 3 $\mu$  profile foil is higher loss all the way to the maximum measured frequency of 50 GHz.

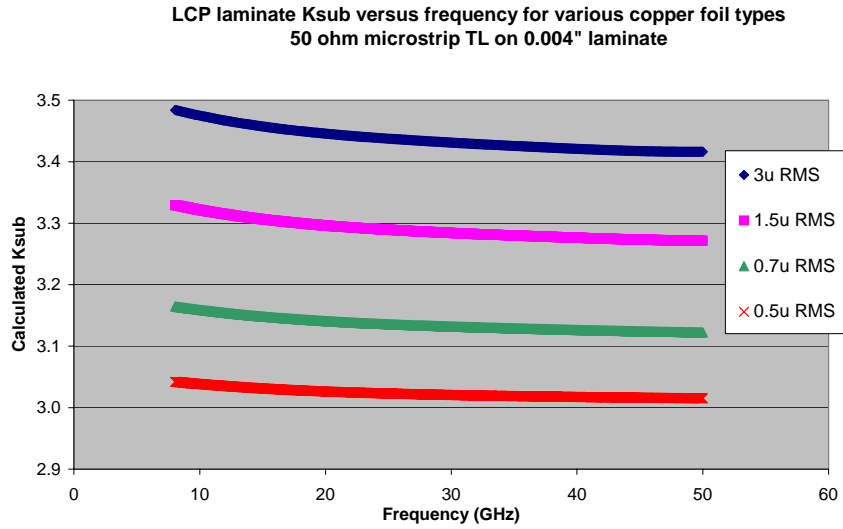
These data clearly show that saturation does not occur, at least up to frequencies of 50 GHz and that the effect of conductor profile is larger than predicted by the Morgan correlation at frequencies above 10 GHz.

The effective dielectric constant of the microstrip circuit,  $K_{eff}$ , was calculated from the differential phase length from 8 to 50 GHz, and smoothed with a 4<sup>th</sup> order polynomial fit and the data are plotted for the four copper types in figure 6. There is a substantial effect of the copper profile on the  $K_{eff}$  value. For the 0.5 $\mu$  profile foil, the  $K_{eff}$  value is about 2.36 at 10 GHz while the value for the 3 $\mu$  profile foil is 2.66 at the same frequency. Clearly, the propagation constant is strongly affected by the conductor profile.



**Figure 6**

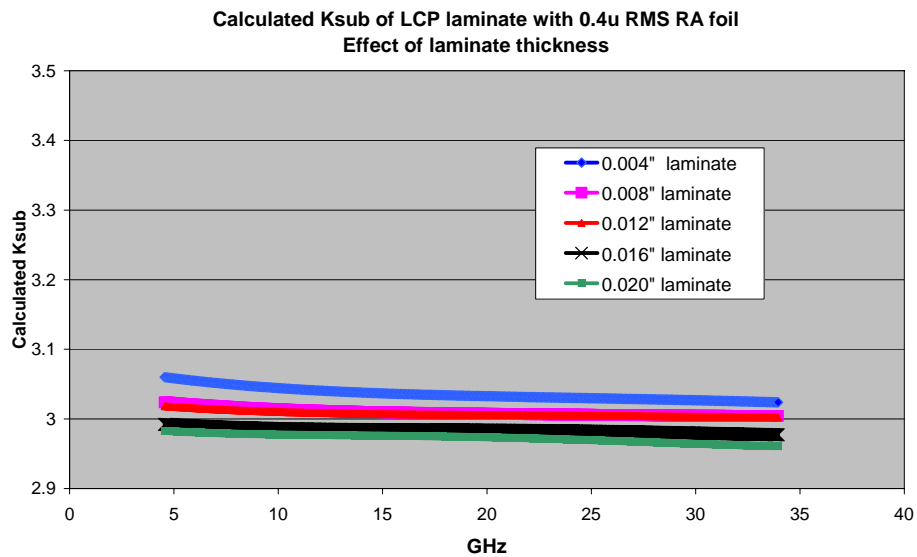
One measure of the magnitude of the effect of conductor roughness on the propagation constant is to “back calculate” the substrate dielectric constant,  $K_{sub}$ , using the measured dimensions of the microstrip transmission line and the  $K_{eff}$  calculated from the measured differential phase length. In Figure 7 we show the results of calculating  $K_{sub}$  using the equations of H&J in the MWI impedance calculator, and the  $K_{eff}$  data shown in Figure 6. Clearly, changing the copper profile alone makes a substantial difference in the calculated  $K_{sub}$  for 0.004” thick laminate. The laminate clad with the 3 $\mu$  RMS profile foil exhibits a calculated  $K_{sub}$  nearly 15% higher than that of the same material clad with the 0.4 $\mu$  RMS profile foil.



**Figure 7**

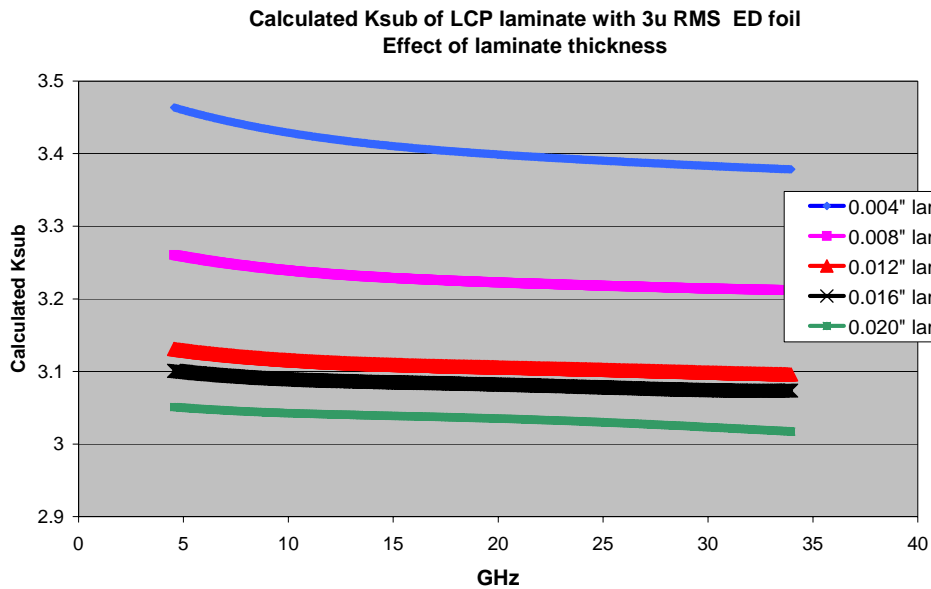
Additionally, the insertion loss and phase length of 50 ohm transmission lines were measured from 5 to 35 GHz on a series of LCP laminates ranging in thickness from 0.004" to 0.020" in 0.004" increments. The materials were clad with three types of copper foil: 0.4 $\mu$  RMS profile RA foil, 0.6 $\mu$  RMS RT foil, and 3 $\mu$  RMS ED foil.

A plot of the calculated  $K_{sub}$  (calculated again from the phase length data using the equations of H&J) versus frequency (Figure 8) is shown for the five different laminate thicknesses clad with the low profile (0.4 $\mu$  RMS) RA foil. The  $K_{sub}$  value increases less than 2% as the laminate thickness is reduced from 0.020" to 0.004" and the  $K_{sub}$  versus frequency is relatively flat.



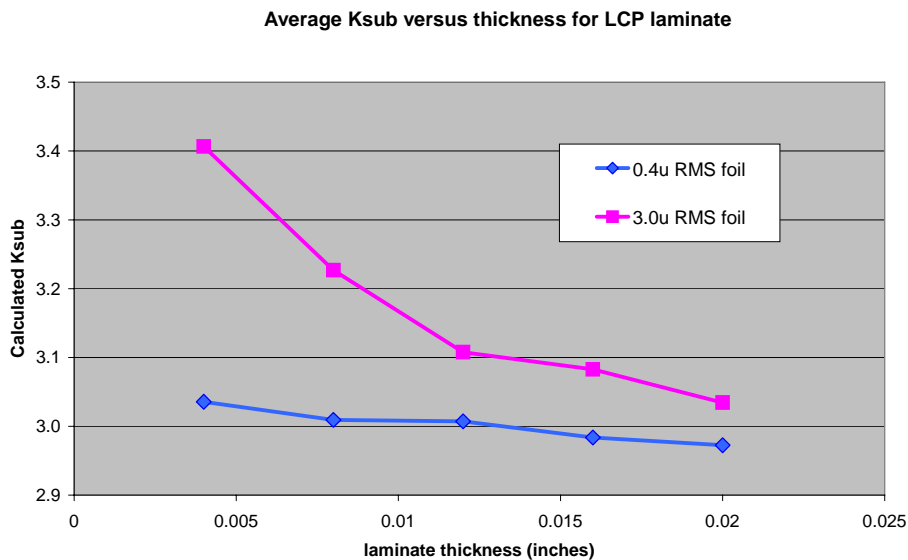
**Figure 8**

A similar plot (figure 9) for the same materials clad with the high profile ( $3\mu$  RMS) ED foil shows quite different behavior. The calculated  $K_{sub}$  for the 0.004" laminate is about 12% higher than that calculated for the 0.020" material.



**Figure 9**

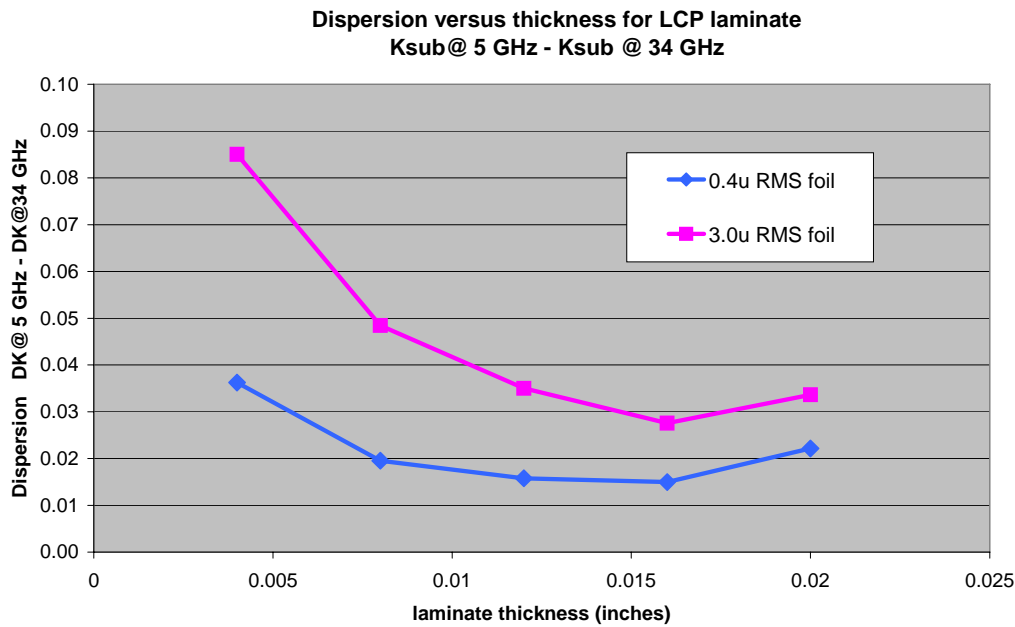
A plot of the  $K_{sub}$  averaged from 5 to 34 GHz versus laminate thickness (Figure 10) from the same data set demonstrates again that the circuits clad with the low profile exhibit only a small change in  $K_{sub}$ , while the high profile foil-clad laminates exhibits a large increase as laminate thickness decreases.



**Figure 10**

We emphasize that the intrinsic substrate dielectric constant cannot be a function of the RMS roughness of the copper foil. Rather, the conclusion is that this apparent dependence of the dielectric constant on conductor profile illustrates an inadequacy of the previously applied conductor models.

“Dispersion” is the change in dielectric constant with frequency. For all well-behaved dielectric materials, there is a general decrease in dielectric constant as frequency increases. For the present analysis, we have quantified dispersion as the difference in calculated  $K_{sub}$  at 5 GHz and 34 GHz. A plot of dispersion versus laminate thickness (Figure 11) shows that there is a relatively small increase in dispersion as one decreases the laminate thickness when the material is clad with the low profile foil, and a comparatively large increase in dispersion when clad with the high profile foil.



**Figure 11**

## Modeling of current results

Based on the results of Tsang et al<sup>9</sup>, and Ding et al<sup>10</sup>, detailed modeling of the conductor profile at least qualitatively matches the features of loss data observed in the present work. Both the “greater than factor of two” increase in conductor loss due to profile and the “lack of saturation” (at least up to 50 GHz) are both calculated in these references and experimentally observed in the current work.

Deutsch et al<sup>11</sup> also show that complete electromagnetic wave simulation which includes detailed roughness predicts an increase in phase constant that is similar in magnitude to that seen in present work. These complete simulations which include the submicron scale of roughness will be very time consuming, particularly on structures of any practical degree of complexity.

On the other end of the spectrum of simplicity, models such as Hammerstad and Jensen<sup>2</sup>, while including the “Morgan correlation’s” effect of conductor profile on loss (equation 2) show no effect of loss on the phase constant, since  $\beta$  is calculated using equation 6.

The authors tested several circuit simulation software packages and found similar results: changes in the input conductor loss did not cause any change in the calculated phase constant.

In order to match the increase in conductor loss of higher profile foils, some circuit design software providers advise decreasing the value of the conductor conductivity,  $\sigma$ , input to the model. The authors also tested several software packages by varying the input value of  $\sigma$  input to the model observing the effect on the phase constant. In some cases, changing the input value of conductivity to the model did not cause a change in  $\beta$ . The models presumably calculate the phase constant by equation 6.

In more detailed software models decreasing the input value of conductivity indeed increased the phase constant (as suggested by equation 5). However, as will be demonstrated in the following section, the measured increase in phase constant is considerably larger than that caused by the increase in loss alone.

Evidently, the conductor roughness itself imparts changes in the conductor performance that are reflected in a new conductor model presently under consideration by Sonnet Software.

## General Considerations on Modeling Surface Roughness

There is a spectrum of modeling approaches to address the surface roughness problem. At the very high end are full three-D volume meshing EM tools like CST and HFSS. In these cases, one can analyze the actual shape of the conductor surface. This has the advantage that the possibly very complicated frequency dependent effect due to specific microstructure in the conductor surface is precisely included. The disadvantage is that analysis time is excessive for all but the simplest of circuits. In addition, the exact microstructure, or even important aspects of the nature of the microstructure might not be known.

At the other end of the spectrum, we have empirically derived closed form models, such as Hammerstad and Jensen, which have been available for the better part of a half-century. While these are simple, widely used, and easily programmed, in certain cases they show considerable error when compared to measurement. An example of a shortcoming typical of these models is the failure to include the effect of loss on the phase constant.

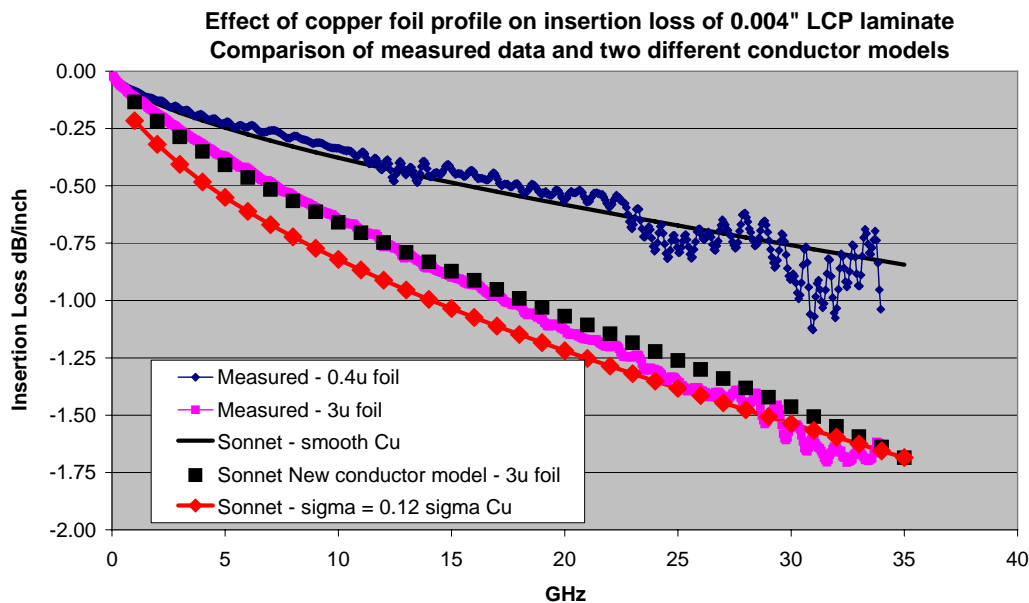
In the mid-ground are closed form surface impedance models combined with planar EM analysis. The simplest model is to include resistance based on skin effect, which varies with square root of frequency. This fails at low frequency because square root of

frequency is zero at DC, but the resistance is not zero. The next step up in sophistication correctly includes the transition between skin effect (high frequency) and pure resistance (low frequency). This is the level at which most planar EM software now exists.

Proceeding one step higher, the surface impedance model can include surface inductance, which is also inherent in skin effect but is often ignored in microwave design tools. This is the present model used by Sonnet Software. As we show in this paper, even this additional surface inductance is not sufficient to explain large discrepancies from measured results that include surface roughness. This is where the most sophisticated surface impedance model, with results reported here, becomes critical for design success.

### Modeling the Effect of Surface Roughness on Insertion Loss.

Figure 12 shows measured insertion loss for Rogers ULTRALAM 3850 LCP substrate of 0.004" thickness. There are two measured curves. The better, lower insertion loss curves are for ½ oz (0.0007" thick) RA copper foil with an RMS surface profile of 0.4  $\mu$ . This profile value is about 0.4% of the substrate thickness. We choose to use this case to approximate perfectly smooth foil.



**Figure 12**

The higher insertion loss curve in figure 12, was measured on a 50 ohm microstrip transmission line made on the same substrate, but clad with the ½ oz. ED foil with the 3.0  $\mu$  RMS profile. This profile represents about 3% of the substrate thickness.

The measured insertion loss curves are to be compared with three curves simulated by Sonnet Software, using the measured physical dimension of the actual circuits, a  $\epsilon_R$  value of about 3.0, and  $\tan\delta$  of 0.002 for the LCP dielectric material.

Looking at the lower insertion loss curves, the “Sonnet - smooth Cu” curve is a nearly perfect match to the measured insertion loss for the smooth foil, “Measured - 0.4  $\mu$  foil.” This curve was calculated using the laboratory value of copper conductivity ( $\sigma = 5.8 \times 10^7$  S/m).

However, we have a different story for the lower set of three curves. In the first simulation attempt, we match the higher frequency insertion loss values by decreasing the input value of the copper conductivity to a factor of 0.12 times that of copper ( $\sigma = 0.7 \times 10^7$  S/m). The measured data for the 3.0  $\mu$  RMS foil do not show a good match with Sonnet data that was calculated in this manner. In fact, at low frequency, the error approaches 100%. In addition, the DC resistance of the line is now substantially increased (by  $1 / 0.12 = 8.3$  times).

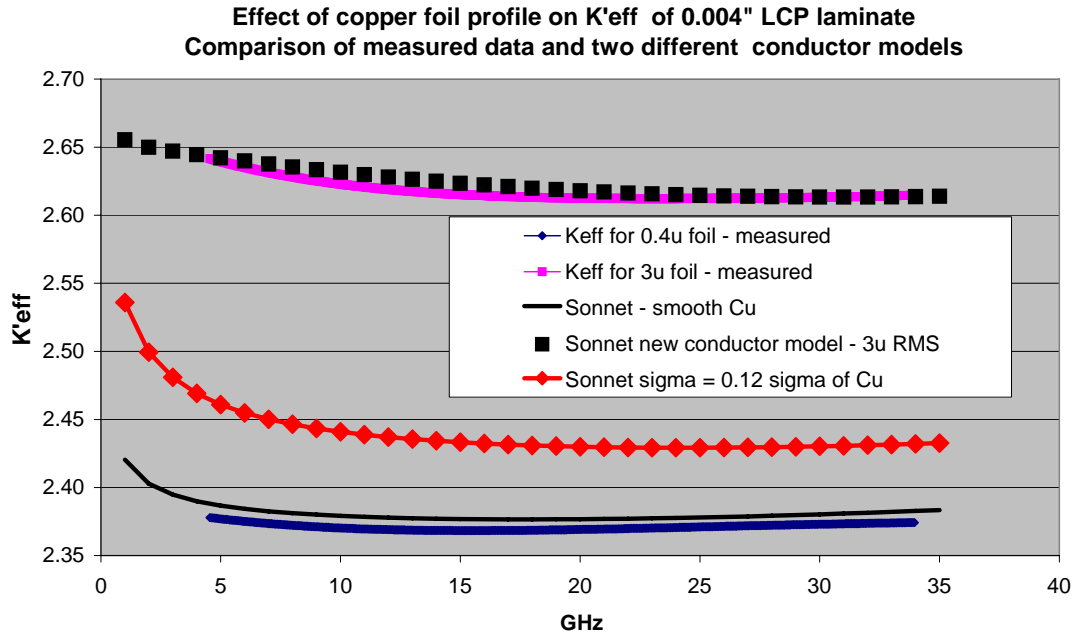
In the third simulation, we use a new conductor model, which adjusts the conductor properties appropriately to reflect the effect of the conductor profile. We note, however, that the new Sonnet model for roughness represents the insertion loss nearly perfectly.

### Modeling the Effect of Surface Roughness on $K_{\text{eff}}$

If we temporarily ignore the erroneously high values of insertion loss at lower frequency in Figure 12 and use the same decrease in conductor conductivity (to a value of  $\sigma = 0.7 \times 10^7$  S/m) to model the effective dielectric constant,  $K_{\text{eff}}$ , of the microstrip lines, we will note that the agreement between predicted and measured values is even poorer.

In Figure 13, the five curves are for the same five cases only now the measured effective dielectric constant,  $K_{\text{eff}}$ , is plotted versus frequency. In this case, the lower two curves are for the smooth foil case. The measured and Sonnet-calculated  $K_{\text{eff}}$  values are nearly identical. Notice that the measured  $K_{\text{eff}}$  for the rough foil case is much higher. One can imagine the current flowing in and out of the roughness, thus creating surface inductance when the skin depth is on the order of (or less than) the RMS surface roughness. Ideal skin effect increases both surface resistance and surface inductance. Thus, a decrease in bulk conductivity should increase  $K_{\text{eff}}$ . However, merely decreasing the bulk conductivity to the value of  $\sigma = 0.7 \times 10^7$  S/m that best fit the insertion loss data, does not increase the  $K_{\text{eff}}$  nearly enough to match the measured data for 3 $\mu$  RMS profile foil. This approach results in a  $K_{\text{eff}}$  increase of only about 2%. The measured increase is greater than 10%.





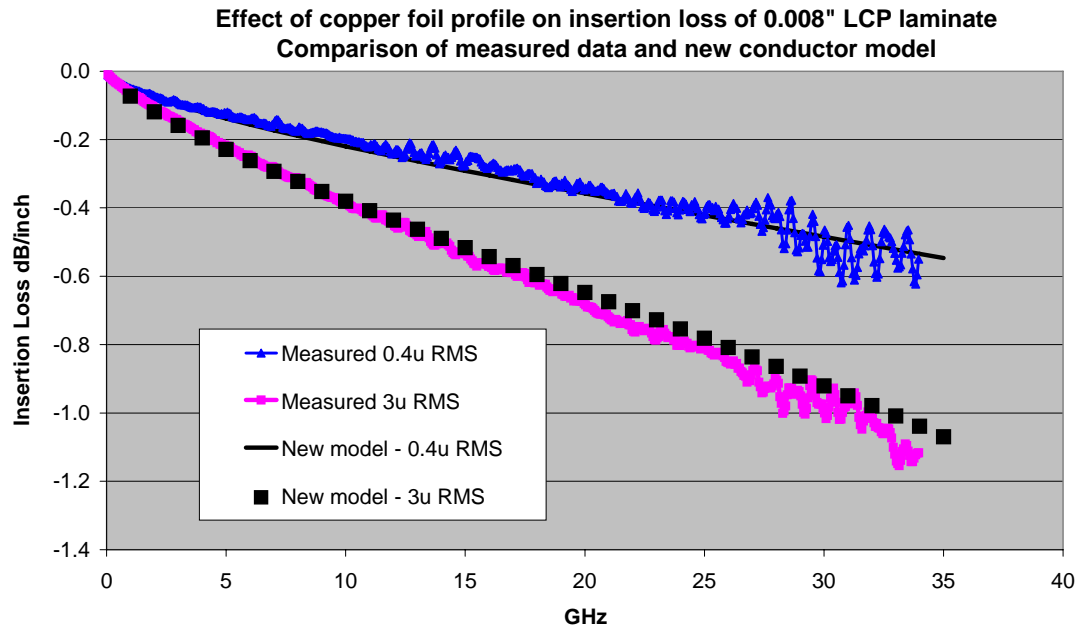
**Figure 13**

Comparing the upper two curves for measured data on 3 $\mu$  RMS foil and the same Sonnet new conductor model that perfectly predicted the insertion loss in Figure 12, one will note that the new Sonnet roughness model duplicates the  $K_{eff}$  almost perfectly across the frequency range.

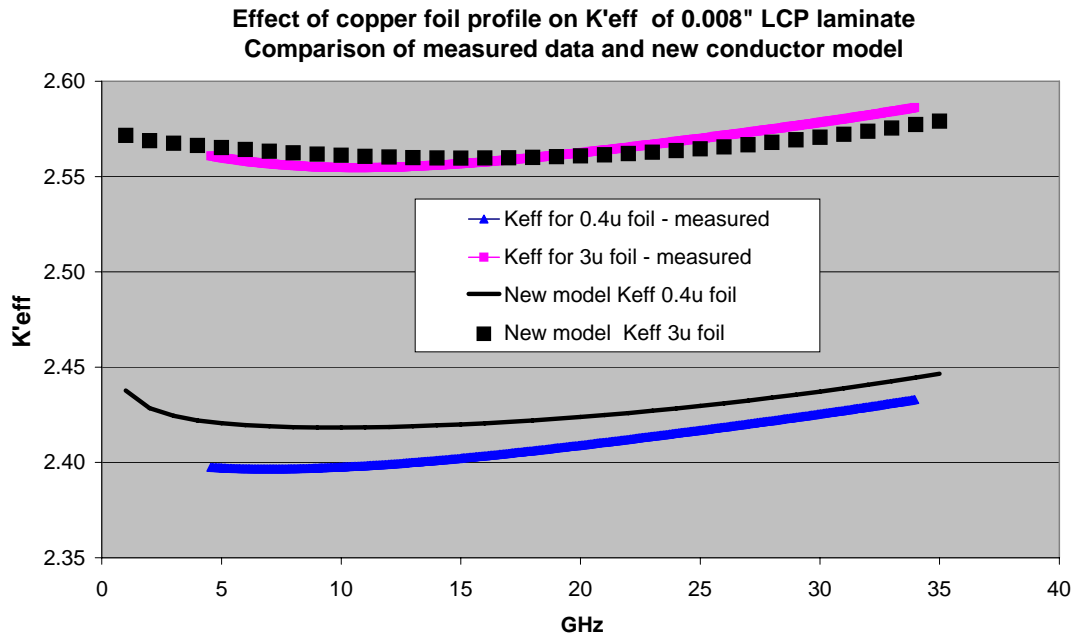
### Verifying Results as a Function of Substrate Thickness.

The next question is whether or not the same conductor roughness model can predict the measured effective dielectric constant for different thickness substrates that use the same foil. Figures 14-19 show three more cases using exactly the same Sonnet metal roughness model developed for the 0.004" laminate. In these three pairs of figures, we clearly demonstrate that the measured values of insertion loss and  $K_{eff}$  on 0.008", 0.012", and 0.016" thick substrates (clad with the same foils used in the 0.004" laminate example) are matched very well by the simulations using the measured circuit dimensions and the same new conductor model developed for the 0.004" laminate. We see that the new conductor model matches the measured data nearly perfectly in all cases.

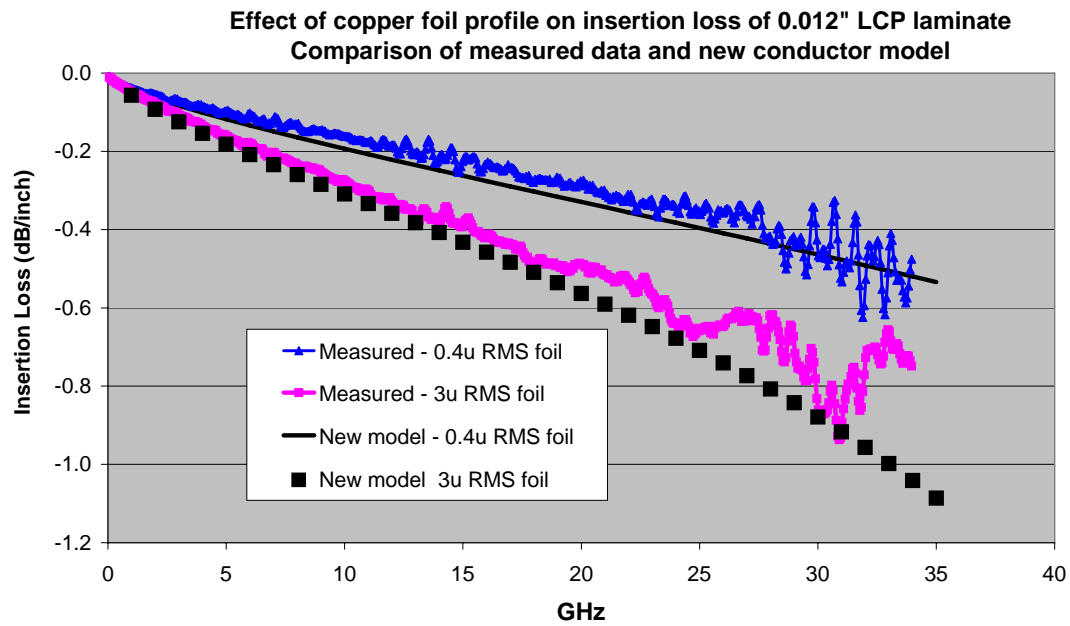
The fact that the predicted  $K_{eff}$  values match the measured values over the entire frequency range also demonstrate that the new conductor model also accurately predicts the higher dispersion for high profile foils on thinner substrates shown in Figure 11.



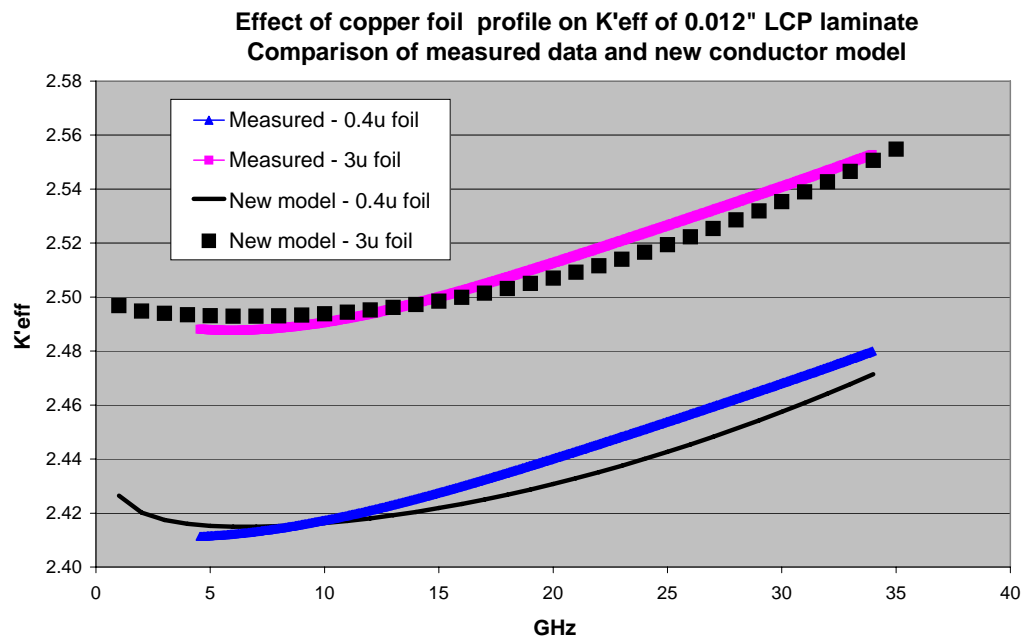
**Figure 14**



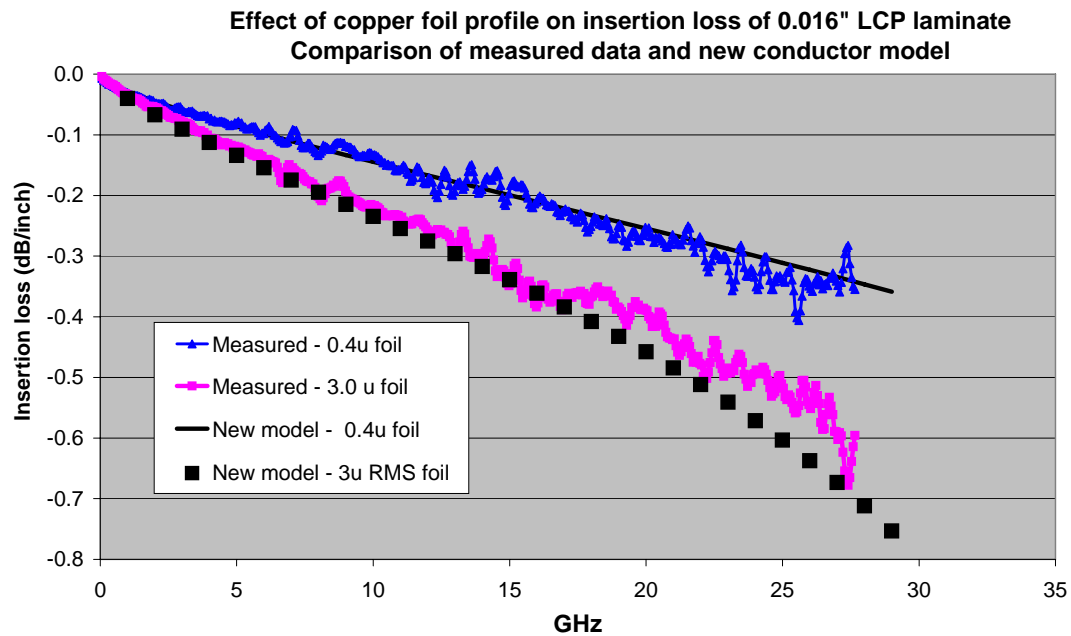
**Figure 15**



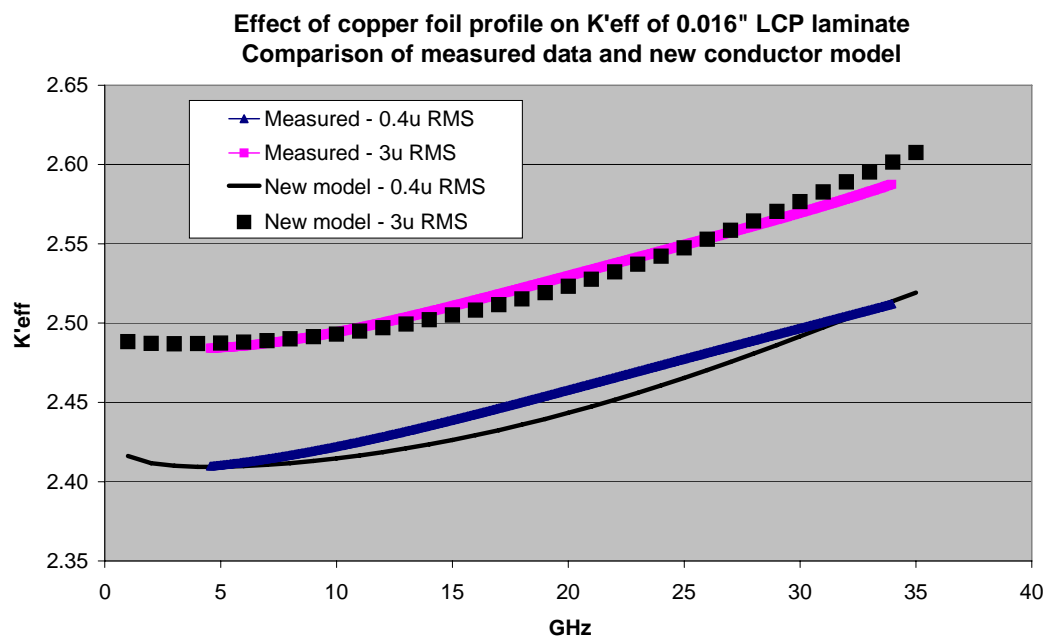
**Figure 16**



**Figure 17**



**Figure 18**



**Figure 19**

## Conclusions

Contrary to early correlations, but consistent with more recent modeling<sup>9,10</sup>, it is experimentally demonstrated that conductor roughness can cause more than a factor of 2 increase in conductor loss.

Again contrary to earlier correlations, but consistent with the more recent reference<sup>9,10</sup>, “saturation” does not occur, at least up to 50 GHz. This means a lower profile foil will exhibit lower conductor loss than a higher profile foil even at higher frequencies.

There is an unexpected influence of conductor profile on the phase constant that is particularly evident in thinner laminates. The effect is larger than predicted simply by including the loss and appears to be directly related to the profile itself.

The above data shows that simply decreasing conductor bulk conductivity or applying a roughness correction factor to the attenuation constant is an inappropriate model for including the effect of surface roughness, both with respect to insertion loss and with respect to  $K_{\text{eff}}$ . The new Sonnet conductor roughness model, however, can achieve a very high degree of agreement with measured data of both insertion loss and  $K_{\text{eff}}$  and is experimentally shown to be independent of substrate thickness.

## Acknowledgments

The authors would like to thank Professor Rajeev Bansal, University of Connecticut, Storrs, for helpful conversations, calculations, and advice and Dr. Gongxian Jia, Huawei Technologies Co., Ltd., Shenzhen, China, for confirming measurements and conversations.

## References

1. S. P. Morgan, "Effect of surface roughness on eddy current losses at microwave frequencies," *J. Applied Physics*, p. 352, v. 20, 1949
2. E. Hammerstad and O. Jensen, "Accurate models of computer aided microstrip design," *IEEE MTT-S Symposium Digest*, p. 407, May 1980
3. S. Groisse, I Bardi, O Biro, K Preis, & K. R. Richter, "Parameters of lossy cavity resonators calculated by the finite element method," *IEEE Transactions on Magnetics*, v. 32, n. 3, May 1996
4. C. Balanis, *Advanced Engineering Electromagnetics*, Wiley (1989)
5. G. Brist, S. Hall, S. Clouser, & T Liang, "Non-classical conductor losses due to copper foil roughness and treatment," *2005 IPC Electronic Circuits World Convention*, February 2005
6. T. Liang, S. Hall, H. Heck, & G. Brist, "A practical method for modeling PCB transmission lines with conductor roughness and wideband dielectric properties," *IEE MTT-S Symposium Digest*, p. 1780, November 2006
7. S. Hinaga, M., Koledintseva, P. K. Reddy Anmula, & J. L Drewniak, "Effect of conductor surface roughness upon measured loss and extracted values of PCB laminate material dissipation factor," *IPC APEX Expo 2009 Conference*, Las Vegas, March 2009
8. X. Chen, "EM modeling of microstrip conductor losses including surface roughness effect," *IEEE Microwave and Wireless Components Letters*, v. 17, n.2, p. 94, February 2007
9. L. Tsang, X. Gu, & H. Braunisch, "Effects of random rough surfaces on absorption by conductors at microwave frequencies," *IEEE Microwave and Wireless Components Letters*, v. 16, n. 4, p. 221, April 2006
10. R. Ding, L. Tsang, & H. Braunisch, "Wave propagation in a randomly rough parallel-plate waveguide," *IEEE Transactions on Microwave Theory and Techniques*, v. 57, n.5, May 2009
11. Deutsch, A. Huber, G.V. Kopcsay, B. J. Rubin, R. Hemedinger, D. Carey, W. Becker, T Winkel, & B. Chamberlin, p. 311, ., *IEEE Symposium on Electrical Performance of Electronic Packaging*, 2002
12. The Institute for Interconnecting and Packaging Circuits, [www.ipc.org](http://www.ipc.org), IPC-TM-650 Test Methods Manual, 2.5.5.6

ULTRALAM is a licensed trademark of Rogers Corporation.

Wyko is a registered trademark of Veeco Instruments Inc.