

Is there an optimal method to tune PA's loading impedance

Dear all,

Recently, I am working with a power Amplifier (PA) tuning. I want to know whether there is an optimal method to tune PA.

I want to import the PCB file to ADS (Advanced Design System). The example PCB file is shown in Fig. 1. Then in the ADS file, I connect a 50 Ohms load to A' point, while the other port of 50 Ohms is connected to ground, then simulate the load impedance looking at the point B'.

Now, my question is how to convert the PCB file to ADS and how to simulate above simulation in ADS? Could someone give me any example files?

PS: my PCB file is allegro file of cadence.

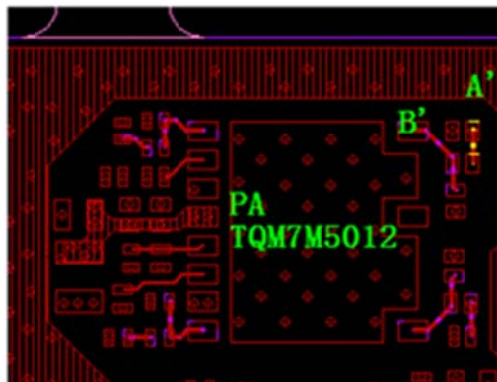


Fig. 1 PA PCB