



LF OEM RFID USB EVALUATION BOARD - DT125EVU

LF RFID USB Evaluation Kit provides an advanced and fully functional system to evaluate and quickly deploy a pilot RFID application or a complete RFID application.

- Enables an effective and affordable demonstration of a cost-effective upgrade or integration with your existing business processes
- User-friendly evaluation software enables development of application software even before the hardware platform is ready
- With the standard USB interface, the DT125EVU is a plug-and-play solution, ideal for logical access applications, as well as financial, ticketing, access control, and others.

FEATURES

- Easy to use
- LED/Beeper to indicate Tag read status
- Provides excellent reading performance
- Provision to connect external Antenna

SPECIFICATION

Operating Voltage	-	+5VDC (USB Power)
Reading Range	-	>=50 mm
Operating Frequency	-	125 KHz
Operating Temperature	-	20°C ~ 65°C
Interface	-	USB2.0
Tag Types	-	EM410x Series Unique Tags
Package	-	ABS Plastic
Color	-	Off-White / Black

The evaluation kit consists of:

- One LF OEM RFID Module mounted
- Evaluation software (Windows platform)
- Two compatible RFID tags
- Module datasheet
- Evaluation kit user guide
- USB cable

WORKING OF LF OEM RFID USB EVALUATION BOARD

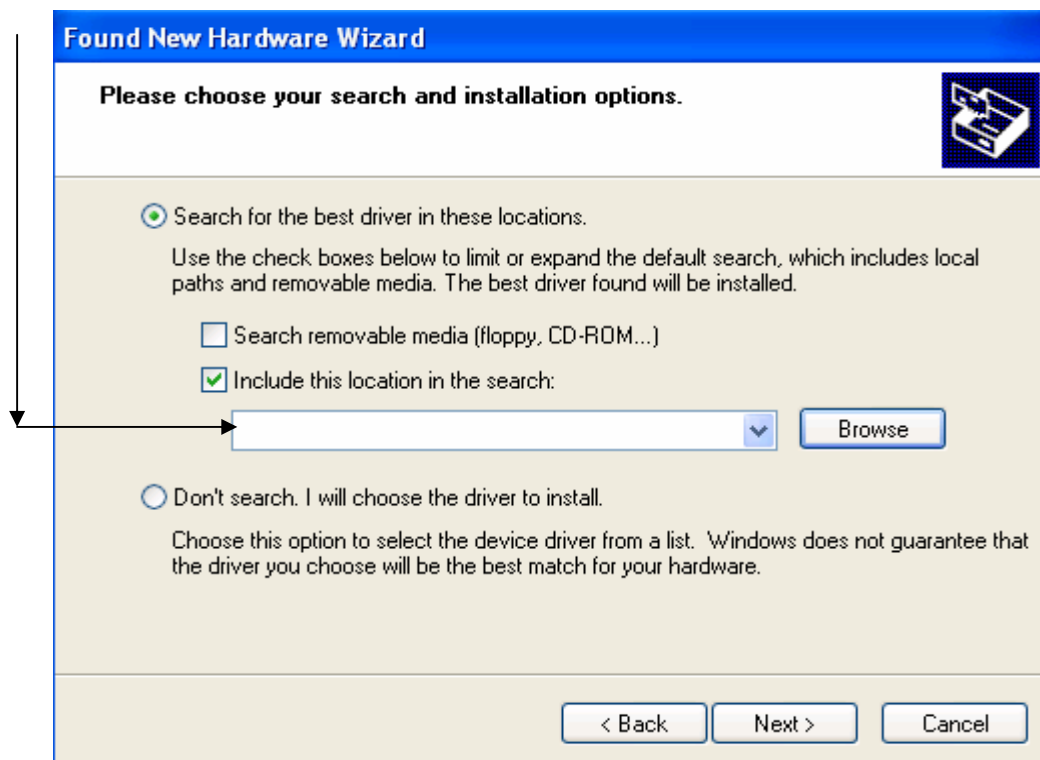
Connect a USB cable from PC to the LF OEM RFID USB EVALUATION BOARD, "Found New Hardware" message window will pop up on the desktop, install the USB driver files as shown below,

Use FTDI USB Driver software provided in the CD.





Specify the path in C drive, click next





Found New Hardware Wizard

Please wait while the wizard searches...



FT232R USB UART



< Back

Next >

Cancel

Found New Hardware Wizard



Completing the Found New Hardware Wizard

The wizard has finished installing the software for:



FT232R USB UART

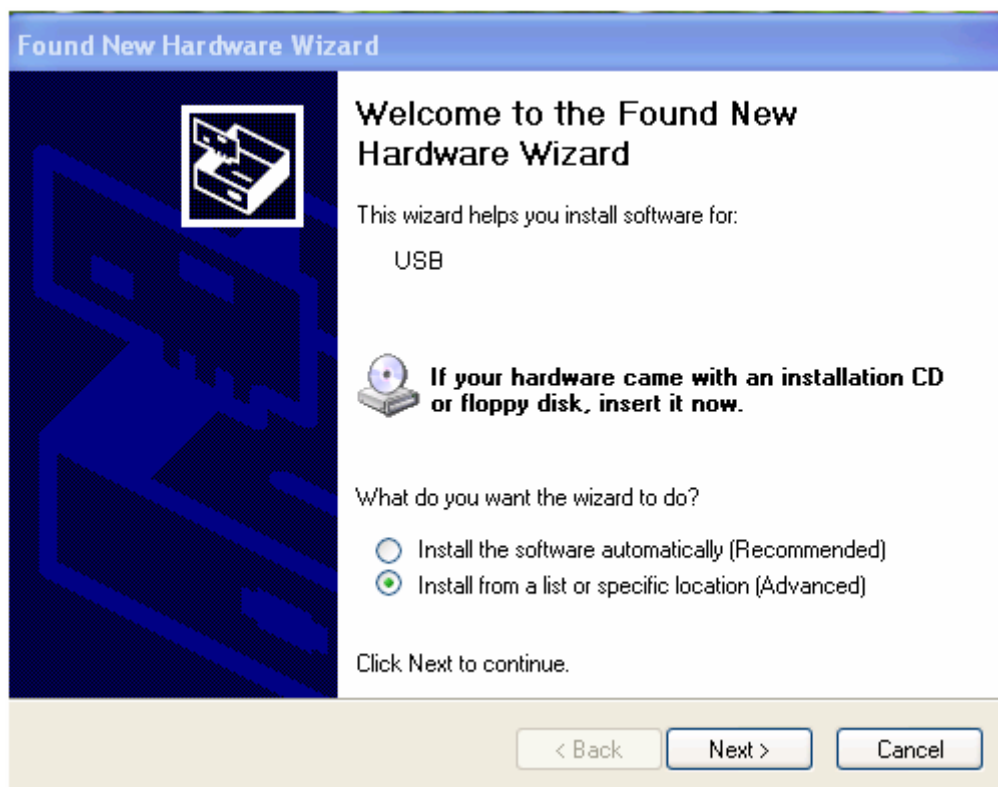
The hardware you installed will not work until you restart your computer.

Click Finish to close the wizard.

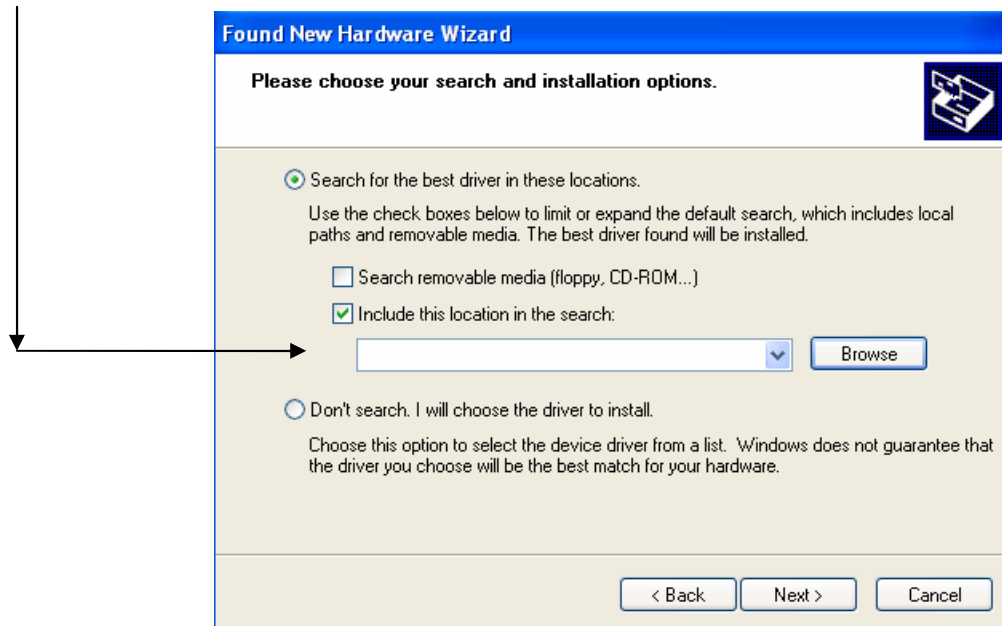
< Back

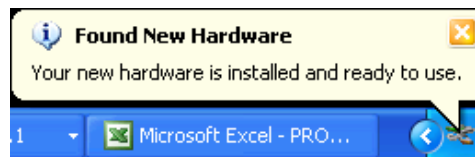
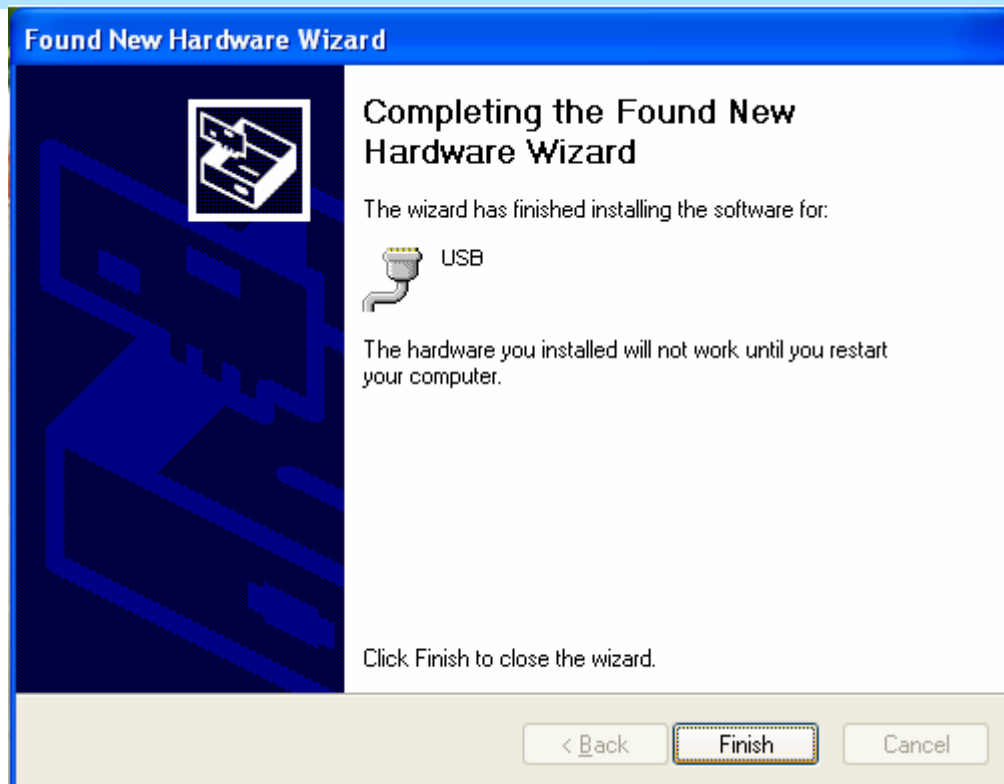
Finish

Cancel



Specify the path in C drive, click

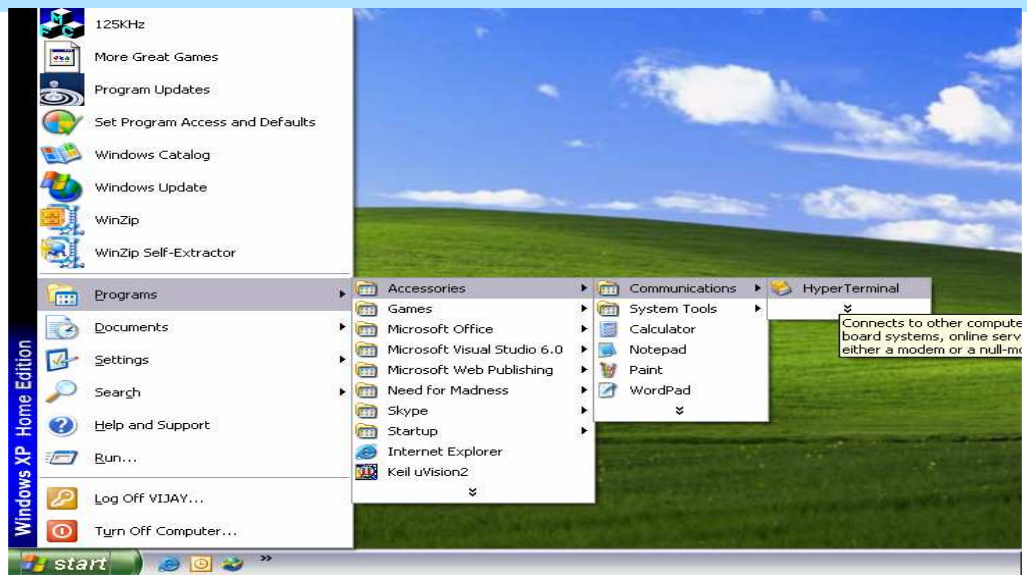




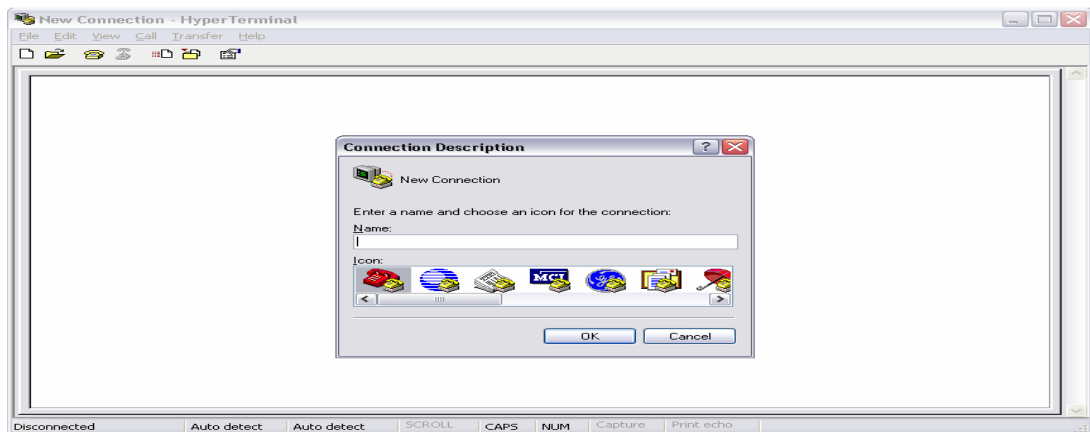
The above shown message will be displayed on the desktop window after the successful installation of USB driver.

HYPER TERMINAL COMMUNICATION SETTINGS

Step A: Click on Start → Programs → Accessories → Communications → HyperTerminal



The hyper terminal window opens as shown below,



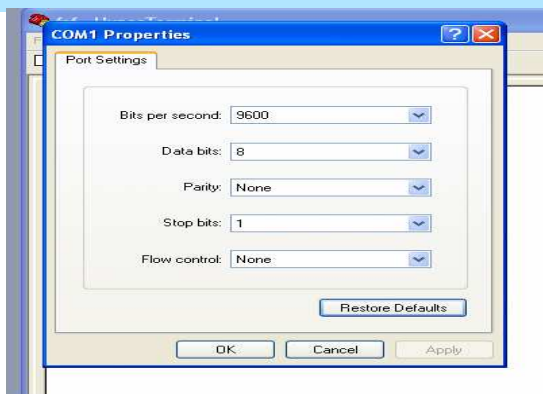
Step B: Enter the name in the edit box and click OK.



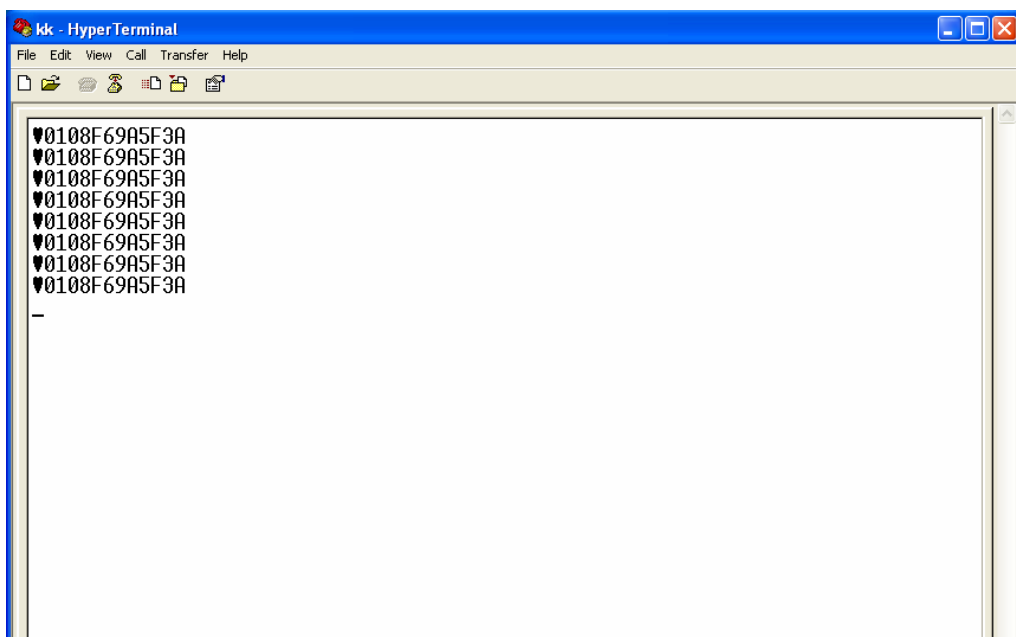
Step C: Select the USB Serial Com port which is newly created as shown below,



Step D: Set the Port settings as given below click on “OK” button.



Step E: The hyper terminal window will be opened, show the tag on the reader and the Unique ID (ASCII format) of the tag will be displayed on the hyper terminal as shown below, Green LED will glow and buzzer will beep.





ASCII data format is shown below:

LF ASCII Data format - ETX (0x03) TAG ID (12 Bytes) Cntrl+enter (0x0A) enter (0x0D)

Cntrl+enter (0x0A) and enter (0x0D) is for the new line.

User can develop PC application software to receive the data from the LF OEM RFID USB EVALUATION BOARD through USB COM port