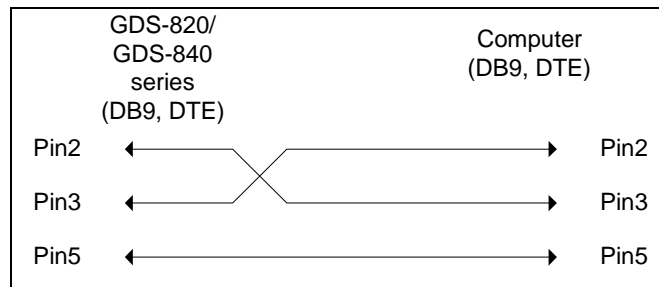


GDS-820S/820C firmware upgrades instructions

Step 1: Turn off the GDS-820S/820C

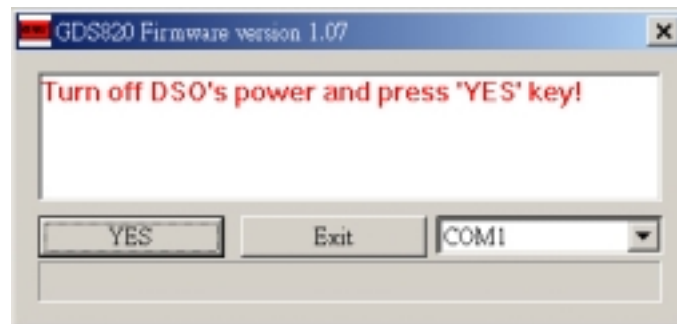
Step 2: Connect a RS232 cable with RS-232 port of GDS-820S/820C. The wiring configuration of RS-232 cable is used for computer with DB9 connectors that configured as Data Terminal Equipment.



DB9 to DB9 wiring

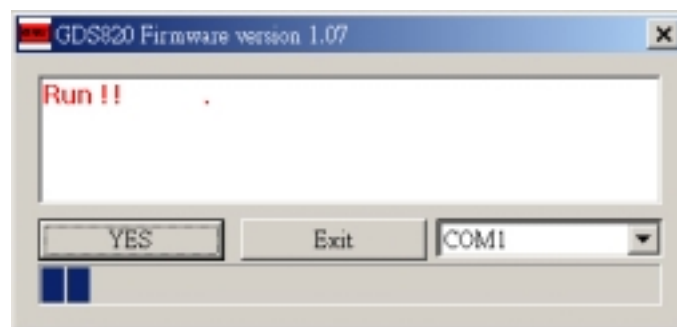


Step 3: Connect the RS-232 cable with computer's COM port properly and perform the firmware upgrade program (GDS820_DIALOG1.exe) from computer! Press the "YES" button on the computer screen.



Step 4: Turn on the oscilloscope.

NOTE: DO NOT TURN OFF THE POWER OF GDS-820S/820C DURING THE FIRMWARE UPGRADE PROGRESSING, THE CALIBRATED DATA WILL LOST PERMANENTLY!



Step 5: Wait for the "Upgrade complete" message appeared. The oscilloscope will re-start again automatically. And the firmware upgrade is accomplished!

