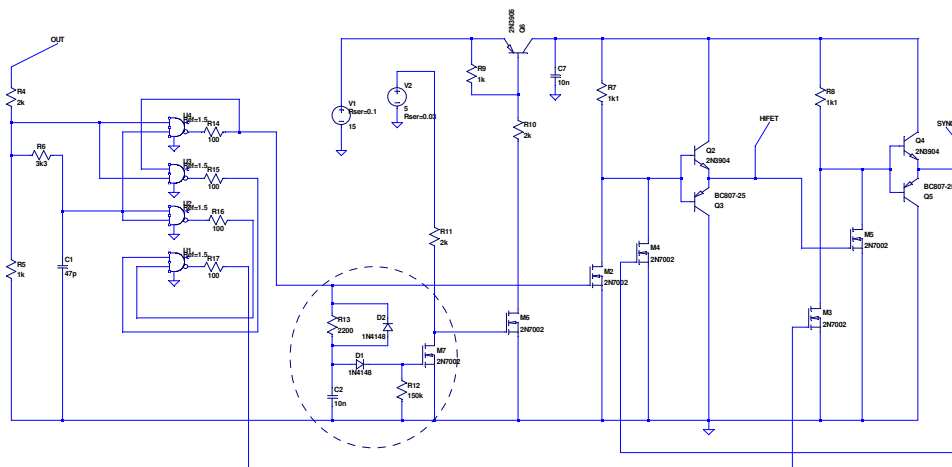


## Synchronous Rectifier control circuitry



**Putting "I(L28) + I(L27)/50" into the waveform window by going "ADD TRACE" allows you to see the flowing magnetising current in the secondary of the CST.**

VOUT=100VDC

SWITCH  
Pout=300W (Max)  
but only 30W at the moment

--- C:\forum\CST\Dual sync buck with CST\_3.asc ---