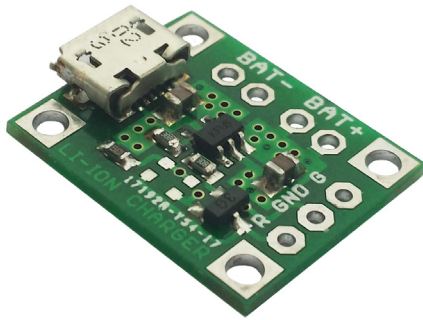


Lithium Ion battery USB charger with external status LED connection



With this battery charger you can use Lithium battery for your projects very simply. All you need is to solder wires from battery and load to the board. Then if you want to charge battery, just plug USB cable in. This board is compatible with almost all modern smartphone chargers. You can run the load and charge the battery at the same time.

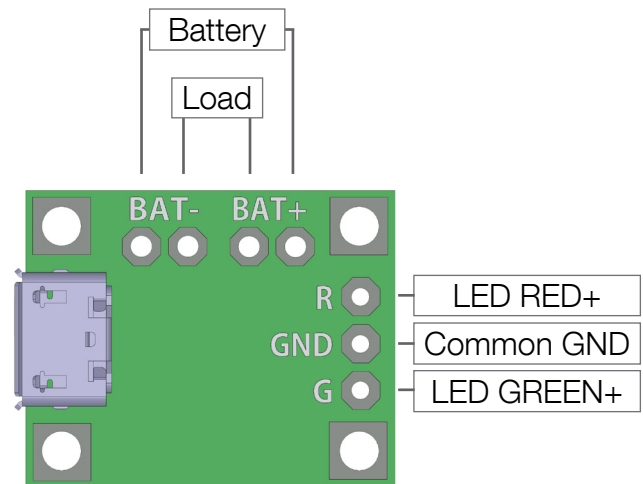
You can solder external bicolor status LED which is included. Then you can put it wherever you want to indicate status of the charger.

Specifications

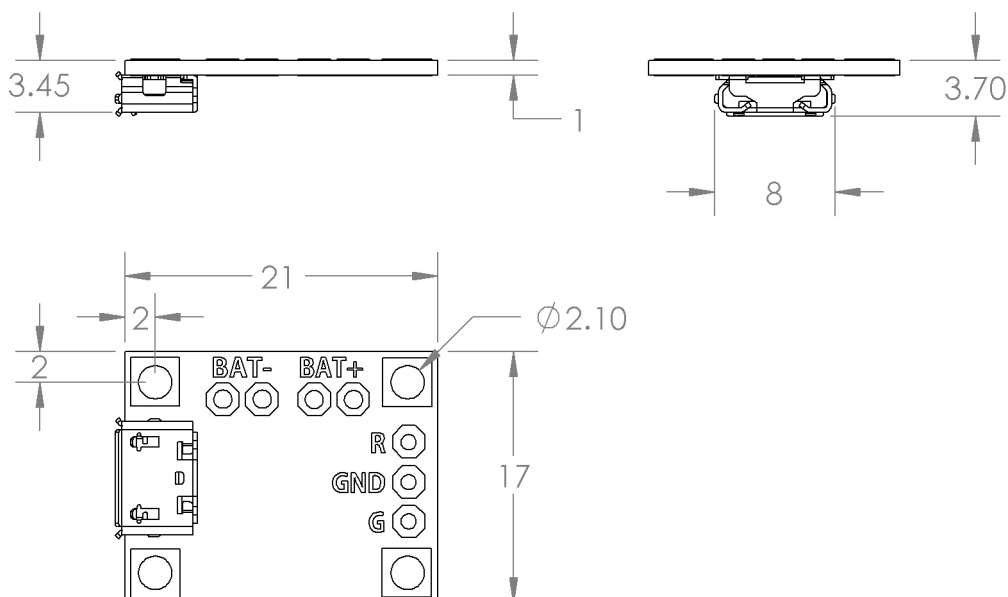
Input voltage range:	4.7 - 5.5 V
Max charge current:	500 mA
Battery type:	Li-Ion
Battery voltage:	4.2 V
Max external LED current:	5 mA
USB type:	MicroUSB B

Status indication

Ready/Charged	Green LED
Charging	Red LED



Physical dimensions



Dimensions are in millimeters