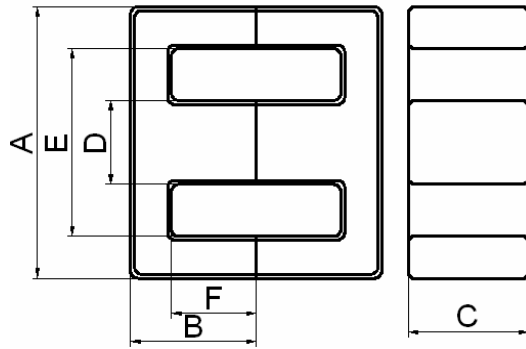
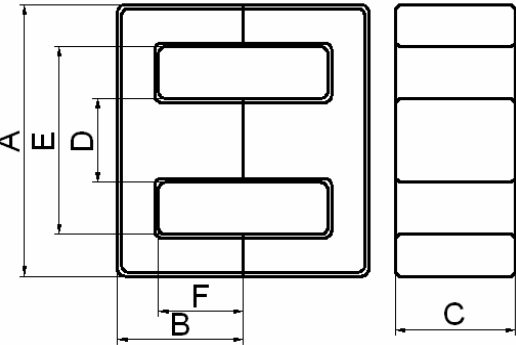


EE型磁心 EE Cores



型号 Type	尺寸 Dimensions (mm)					
	A	B	C	D	E	F
EE10/5/5	10.3±0.2	5.5 ^{+0.15} _{-0.1}	4.75±0.2	2.4±0.2	7.7min	4.3±0.15
EE13/5/6	12.9±0.3	5.0±0.3	6.0±0.3	2.85±0.2	8.5min	3.65±0.15
EE13/6/6	13.0±0.3	6.0±0.15	5.9±0.2	2.6±0.2	10.2±0.3	4.6±0.1
EE13.4/6/6	13.4±0.2	6.1±0.15	6.15±0.15	2.75±0.15	10.5min	4.8±0.1
EE16/7/5	16.0±0.3	7.2±0.1	4.8±0.2	3.8±0.2	12.0±0.3	5.2±0.25
EE16/7/7	16.1±0.3	7.25±0.15	6.9±0.2	3.8±0.2	12.0±0.3	5.2 ^{+0.25}
EE16/8/4	16.3±0.3	8.15±0.15	4.50±0.2	4.55±0.15	11.5min	6.0±0.2
EE16/12/5	16.0±0.3	12.25±0.2	5.0 _{-0.5}	4.2 _{-0.4}	12.0±0.3	10.2 ^{+0.3} _{-0.2}
EE19/8/5	19.0±0.3	8.05±0.2	5.0±0.2	4.5±0.2	14.5±0.3	5.65±0.15
EE19/14/5	19.0±0.3	13.65±0.25	4.85±0.25	4.85±0.25	14.0±0.3	11.4±0.25
EE19.1/8/5	19.1±0.3	8.0±0.3	4.8±0.3	4.8±0.3	14.0min	5.7±0.2
EE20/10/6	20.0±0.4	9.9±0.15	5.65±0.3	5.7±0.2	14.4±0.3	7.2±0.2
EE21/12/8	21.0±0.4	12.0±0.2	8.2±0.3	3.0±0.2	16.0±0.3	8.4±0.2
EE22/15/6	22.0±0.4	14.7 ^{+0.4}	6.0 _{-0.5}	6.0 _{-0.5}	15.6min	10.7±0.4
EE22/22/5	22.2±0.1	22.2±0.1	4.7±0.3	5.8±0.2	16.0±0.3	18.2±0.2
EE25/10/7	25.0±0.4	10.0±0.2	6.55±0.3	6.55±0.3	18.6±0.3	6.8±0.2
EE25/12/7	24.5±0.4	12.5±0.2	7.0±0.3	7.3±0.2	17.9±0.4	9.2±0.2
EE25/13/7	25.05±0.5	12.55±0.25	7.2±0.3	7.25±0.25	18.0±0.3	8.95±0.25
EE25/13/11	25.05±0.75	12.55±0.25	10.75±0.3	7.25±0.25	17.90±0.4	8.95±0.25
EE25.4/10/6	25.4±0.4	10.0±0.2	6.35±0.3	6.35±0.3	19.00±0.3	6.8±0.15
EE25.4/10/7	25.4±0.4	10.0±0.2	6.6±0.3	6.2±0.2	18.5min	6.8±0.2
EE25.6/10/6	25.6±0.5	9.9±0.25	6.4±0.3	6.5±0.2	18.80min	6.65±0.2
EE27/11/11	26.5 ^{+0.7} _{-0.3}	10.8±0.3	11.0±0.3	7.2±0.3	19.0min	6.8±0.3
EE28/10/11	28.5±0.4	10.45±0.2	10.9±0.3	7.3±0.3	20.5±0.3	6.5±0.2
EE30/13/11	30.1±0.6	13.3±0.15	10.7±0.3	10.7±0.3	20.35±0.3	8.15±0.15
EE32/16/11	32.1±0.6	16.1±0.15	10.65±0.35	9.2±0.3	23.3±0.4	11.6±0.15
EE33/14/13	33.4±0.5	13.95±0.25	12.7±0.3	9.7±0.3	24.6±0.4	9.65±0.25
EE41/17/12	40.6±0.65	16.6±0.2	12.4±0.3	12.46±0.25	28.6min	10.4min
EE42/21/15	42.15±0.85	21.1±0.3	15.0±0.3	12.0±0.3	29.5min	15.2±0.4
EE42/21/20	42.15±0.85	21.1±0.2	19.75±0.35	12.0±0.3	29.5min	15.2±0.2
EE50/22/15	50.0±1.0	21.5±0.5	14.8±0.6	14.8±0.6	34.2min	13.0±0.5

型号 Type	磁芯参数 Core parameter				重量 weight (g/prs)	AL(nH/N ²)		
	C1 (mm ⁻¹)	Le (mm)	Ae (mm ²)	Ve (mm ³)		HP2 (±25%)	LP3 (±25%)	LP3A (±25%)
EE10/5/5	2.34	26.7	11.4	304	1.6		810	810
EE13/5/6	1.39	25.0	17.9	446.6	2.7		1350	1350
EE13/6/6	1.88	30.3	16.0	487	2.4	2000	1000	1000
EE13.4/6/6	2.01	31.1	15.5	482.8	3.2	1900	980	980
EE16/7/5	1.92	35.5	18.4	655	3.2	2300	1100	1100
EE16/7/7	1.28	35.3	27.5	907.5	4.8	1500	1500	1500
EE16/8/4	1.90	38.2	20.1	766	3.8	2300	1100	1100
EE16/12/5	2.84	55.0	19.4	1070	5.2	1600	800	800
EE19/8/5	1.75	39.9	22.8	913	4.6	1730	1150	1150
EE19/14/5	2.65	62.1	23.4	1450	7.2	1550	840	840
EE19.1/8/5	1.736	39.6	22.8	903	4.6	1750	1100	1100
EE20/10/6	1.46	46.1	31.5	1294	7.3	1950	1400	1400
EE21/12/8	1.504	49.5	32.9	1631	11.3	2900	1350	1350
EE22/15/6	1.809	64.9	35.8	2320	12	2300	1100	1100
EE22/22/5	3.232	93.1	28.8	2680	14	1360	650	650
EE25/10/7	1.17	49.4	42.2	2085	10	4450	1950	1950
EE25/12/7	1.21	57.8	47.7	2760	14	4400	1920	1920
EE25/13/7	1.120	57.8	51.6	2981	16	4800	2200	2200
EE25/13/11	0.746	57.9	77.3	4470	22		3000	3000
EE25.4/10/6	1.23	49.8	40.4	2010	10	4400	1950	1950
EE25.4/10/7	1.251	49.9	39.9	1990	10	4200	1930	1930
EE25.6/10/6	1.269	49.5	39.0	1930	10	4000	1900	1900
EE27/11/11	0.633	51.3	81.0	4157	23		3400	3400
EE28/10/11	0.635	51.4	80.9	4553	21		3400	3400
EE30/13/11	0.55	58.3	106	6173	32		3800	3800
EE32/16/11	0.779	74.6	95.8	7150	36		2700	2700
EE33/14/13	0.589	67.4	114	7690	39		3700	3700
EE41/17/12	0.511	115.9	152.3	17660	61		4000	4000
EE42/21/15	0.534	97.0	182	17600	80		4700	4700
EE42/21/20	0.415	97.4	235	22900	116		6100	6100
EE50/22/15	0.42	95.8	226	21600	116		6110	6110



型号 Type	尺寸 Dimensions (mm)					
	A	B	C	D	E	F
EE55/28/21	55.0 ^{+1.2} _{-0.9}	27.5±0.3	20.7±0.3	17.2 _{-0.5}	37.5min	18.8±0.3
EE55/28/25	55.0 ^{+1.2} _{-0.9}	27.5±0.3	24.7±0.3	17.2 _{-0.5}	37.5min	18.8±0.3
EE56/28/21	56.5±1.0	27.5±0.3	20.7±0.3	17.2 _{-0.5}	39.2min	18.8±0.3
EE60/36/16	60.0 ^{+1.2} _{-0.8}	36.0±0.5	15.6±0.4	15.6±0.4	43.7min	28.0±0.5
EE65/32/27	65.2±1.3	32.5±0.3	27.0±0.4	20.0 _{-0.7}	44.2min	22.2 ^{+0.7}
EE66/33/27	66.0±1.0	32.8 _{-0.5}	27.5 ^{+0.5}	20.0 _{-0.7}	46.0min	22.20 ^{+0.5}
EE70/33/32	70.5±1.0	33.2 _{-0.2}	31.6±0.4	22.0 _{-0.7}	48.0min	21.9 ^{+0.7}
EE70/35/24	70.5±1.5	35.5±0.5	24.5±0.6	16.7±0.5	48.0min	24.0 ^{+1.3}
EE70/46/20	70.0±1.5	45.5±0.5	19.5±0.5	19.5±0.5	50.0±0.5	35.5±0.5
EE70/54/32	70.0 ^{+1.3} _{-0.3}	54.0±0.25	32.0 _{-0.7}	22.4 _{-0.7}	47.2min	43.0±0.25
EE80/38/20	80.7±1.5	38.0±0.5	20.0±0.5	20.0±0.5	59.8min	28.0±0.5
EE82/38/20	82.0±1.0	38.0±0.5	20.0 _{-0.8}	19.8±0.5	61.5min	28.0±0.5
EE85/44/26	85.0 ^{+2.0} _{-2.5}	44.0±1.0	26.5±0.5	26.6±0.3	55.0min	29.2±0.5
EE110/56/36	110.0 ^{+2.5} _{-1.0}	55.5±0.5	36.0±1.0	36.0±1.0	74.2min	36.5±0.7
EE118/86/35	118.0 ^{+1.5} _{-2.5}	86.5 ^{+0.75} _{-0.5}	35.0±0.7	35.0±0.5	82.0min	69.0±0.5
*EE122/70/236	120.6±2.5	69.0±1.0	232.0 ^{+3.0} _{-5.0}	17.2±0.5	86.2	51.8±1.0
EE130/63/40	130.0 ^{+3.0} _{-2.0}	63.0±1.0	40.0±1.0	40.0±2.0	89.0min	46.0±1.0
EE160/74/28	162.0±3.0	74.0±1.5	28.0±1.0	28.0±1.0	131.7	60.0±1.0
*EE160/83/40	162.0±2.5	83.0±1.0	40.0±1.5	40.0±2.0	120.0min	64.0±1.0
EE185/75/20	185.0±3.0	75.0±1.0	20.0±2.0	52.0±3.0	127.0min	48.5±1.0
EE200/130/40	200.0 ^{+3.0} _{-4.0}	75.4±1.5	40.0±1.5	40.0±1.5	157min	110.0±1.5
*EE240/118/40	240.0 ^{+3.0} _{-7.0}	117.5±2.0	40.0±1.5	59.0±2.0	175min	87.5±2.0
*EE320/125/20	320.0±5.00	125.0±0.5	20.0±2.0	100.0±2.5	217.0min	75.0±1.5

注:带*品种为用两付UU形磁心粘接而成

型号 Type	磁芯参数 Core parameter				重量 weight (g/prs)	AL(nH/N ²)		
	C1 (mm ⁻¹)	Le (mm)	Ae (mm ²)	Ve (mm ³)		LP2 (±25%)	LP3 (±25%)	LP3A (±25%)
EE55/28/21	0.349	122.9	352	43300	221	7100	7100	7100
EE55/28/25	0.292	124	420	52100	256	7200	7200	7200
EE56/28/21	0.363	126	347	43630	260	6300	6300	6300
EE60/36/16	0.698	166	238	39565	205	3700	3700	
EE65/32/27	0.273	146	536	78520	410	7800	7800	
EE66/33/27	0.276	149	540	80517.0	412	7800	7800	
EE70/33/32	0.228	152.3	669.4	101960	520	9000	9000	
EE70/35/24	0.345	160.5	465.8	74770.0	370	6500	6500	
EE70/46/20	0.528	203.1	385.1	78217	382	3500	3500	
EE70/54/32	0.33	231.4	701.7	162360	800	6000	6000	
EE80/38/20	0.46	184.2	400.3	73700	380	4500	4500	
EE82/38/20	0.487	187	384	71670	370	4500	4500	
EE85/44/26	0.256	193	754	145800	675	8300	8300	
EE110/56/36	0.188	236	1254	295900	1560	10000	10000	
EE118/86/35	0.312	375	1201	450360	2290	7000	7000	
*EE122/70/236	0.054	295.5	5436	1606300	5280	34000	34000	
EE130/60/40	0.195	294	1504	442337	2200	14000	14000	
EE160/74/28	0.483	389	805	312700	1430	8000	9000	
*EE160/83/40	0.249	398	1600	637000	3200	10000	10000	
EE185/75/20	0.33	351	1064	373300	2500	6100	6100	
EE200/130/40	0.393	616	1570	968100	4900	4640	4640	
*EE240/118/40	0.233	542	2327	1261000	6540	10500	10500	
*EE320/125/20	0.285	580	2035	1179340	8000	8000	8000	

平面EE型磁心 Planar EE Cores

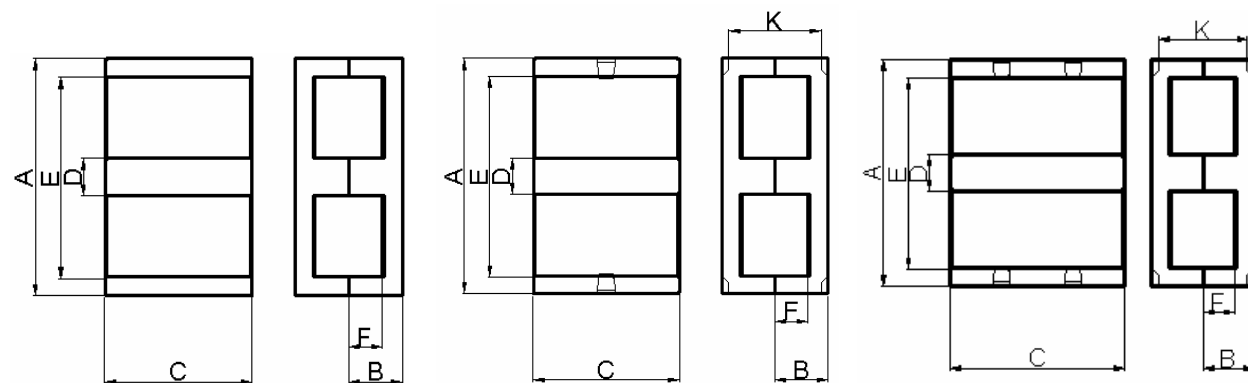


图1 Fig.1

图2 Fig.2

图3 Fig.3

型号 Type	图号 Fig	尺寸 Dimensions						
		A	B	C	D	E	F	K(Ref)
PEE16/7/18	1	16.0±0.3	7.1±0.1	17.8±0.3	6.9±0.2	9.1±0.2	4.0±0.2	
PEE18/4/10	1	18.0±0.35	4.0±0.1	10.0±0.2	4.0±0.1	14.0±0.3	2.0±0.1	
PEE22/6/16	1	21.8±0.4	5.7±0.1	15.6±0.3	5.0±0.1	16.8±0.4	3.2±0.1	
PEE22/6/16R	2	21.8±0.4	5.7±0.1	15.6±0.3	5.0±0.1	16.8±0.4	3.2±0.1	10.4
PEE38/8/25	1	38.1±0.8	8.3±0.2	25.4±0.5	7.6±0.2	30.2min	4.45±0.2	
PEE46/10/56R	3	46.0±0.8	10.5±0.2	56.5±0.6	8.1±0.2	36.5±0.6	6.25±0.2	9.1
PEE58/11/38	1	58.4±1.2	10.5±0.2	38.1±0.8	8.1±0.2	50min	6.5±0.2	
PEE59/27.5/43	1	59.0±0.8	27.5±0.3	43.0±0.6	17.2-0.5	42.7 ^{+1.3}	18.8±0.3	
PEE64/10/50	1	64.0±1.3	10.2±0.2	50.8±1	10.2±0.2	53.8±1.1	5.1±0.2	
PEE64/10/50R	3	64.0±1.3	10.2±0.2	50.8±1	10.2±0.2	53.8±1.1	5.1±0.2	13.6
PEE70/17.5/32	1	70.5±1.0	17.5±0.2	32.0-0.8	22.0-0.7	48.0 ^{+1.5}	8.1±0.2	

型号 Type	磁芯参数 Core parameter				重量 weight (g/prs)	AL(nH/N ²)	
	C1 (mm ⁻¹)	Le (mm)	Ae (mm ²)	Ve (mm ³)		LP3 (±25%)	LP3A (±25%)
PEE16/7/18	0.24	28.4	119.2	3389	18	7000	7000
PEE18/4/10	0.616	24.3	39.3	960	4.8	3200	3200
PEE22/6/16	0.414	32.5	78.3	2550	13	5150	5150
PEE22/6/16R	0.414	32.5	78.3	2550	13	5150	5150
PEE38/8/25	0.272	52.4	194.0	10200	50	7940	7940
PEE46/10/56R	0.136	66.7	488.7	32580	160	16540	16540
PEE58/11/38	0.268	80.6	308.0	24600	124	8480	8480
PEE59/27.5/43	0.180	130.3	722.0	94123	470	12200	12200
PEE64/10/50	0.156	79.9	519.0	40700	200	14640	14640
PEE64/15/50R	0.191	98.4	516.0	50800	230	12000	12000
PEE70/17.5/32	0.148	91.7	618	56681	288	15000	15000

平面EI型磁心 Planar EI Cores

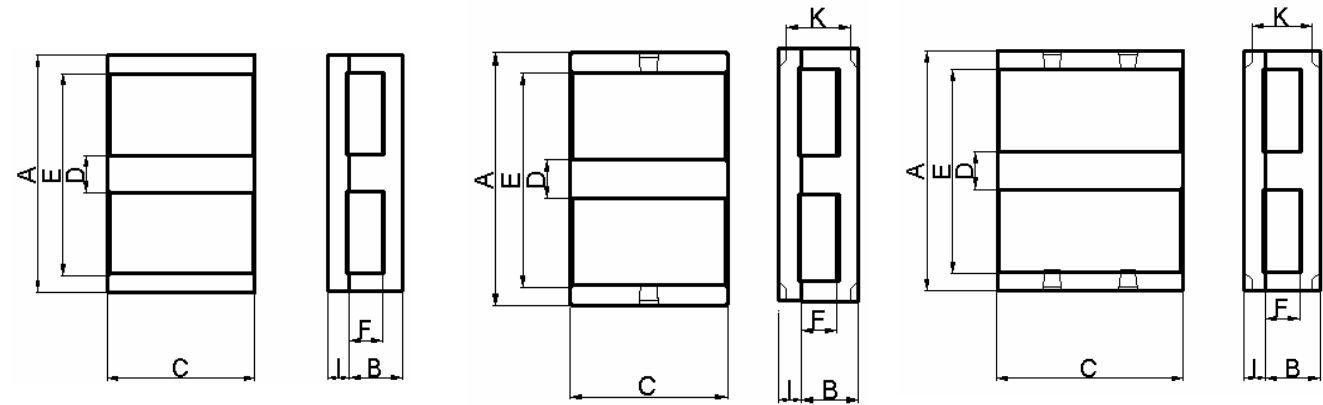


图1 Fig.1

图2 Fig.2

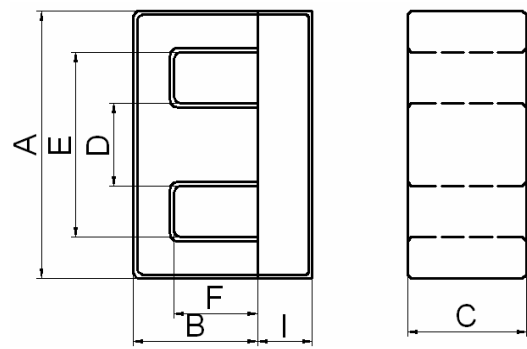
图3 Fig.3

型号 Type	图号 Fig	尺寸 Dimensions							
		A	B	C	D	E	F	K(Ref)	I
PEI18/6/10	1	18.0±0.35	4.0±0.1	10.0±0.2	4.0±0.1	14.0±0.3	2.0±0.1		2.0±0.1
PEI22/8/10	1	21.8±0.4	5.7±0.1	10.0±0.3	5.0±0.1	16.8±0.4	3.3±0.1		2.5±0.1
PEI22/8/12	1	21.8±0.4	5.7±0.1	12.0±0.3	5.0±0.1	16.8±0.4	3.3±0.1		2.5±0.1
PEI22/8/16	1	21.8±0.4	5.7±0.1	15.6±0.3	5.0±0.1	16.8±0.4	3.2±0.1		2.5±0.1
PEI22/8/16R	2	21.8±0.4	5.7±0.1	15.6±0.3	5.0±0.1	16.8±0.4	3.2±0.1	4.7	2.5±0.1
PEI38/12/25	1	38.1±0.8	8.3±0.1	25.4±0.5	7.6±0.2	30.2min	4.45±0.15		3.8±0.15
PEI58/14/38	1	58.4±1.2	10.5±0.2	38.1±0.8	8.1±0.2	50min	6.5±0.2		4.0±0.1
PEI64/15/50	1	64.0±1.3	10.2±0.2	50.8±1.0	10.2±0.2	53.8±1.1	5.1±0.2		5.1±0.2
PEI64/15/50R	3	64.0±1.3	10.2±0.2	50.8±1.0	10.2±0.2	53.8±1.1	5.1±0.2	8.5	5.1±0.2

型号 Type	磁芯参数 Core parameter				重量 weight (g/prs)	AL(nH/N ²)	
	C1 (mm ⁻¹)	Le (mm)	Ae (mm ²)	Ve (mm ³)		LP3 (±25%)	LP3A (±25%)
PEI18/6/10	0.514	20.3	39.5	800	4.1	3200	3200
PEI22/8/10	0.526	26.3	50.0	1313	7.6	4000	4000
PEI22/8/12	0.438	26.3	60.0	1577	9.2	4500	4500
PEI22/8/16	0.332	26.1	78.5	2050	10.5	5200	5200
PEI22/8/16R	0.332	26.1	78.5	2050	10.5	5200	5200
PEI38/12/25	0.226	43.7	194.0	8460	43	9250	9250
PEI58/14/38	0.224	67.7	310.0	20800	106	9970	9970
PEI64/15/50	0.136	69.7	519.0	35500	178	16540	16540
PEI64/20/50R	0.167	86.3	516	44531	194	13000	13000

EI型磁心

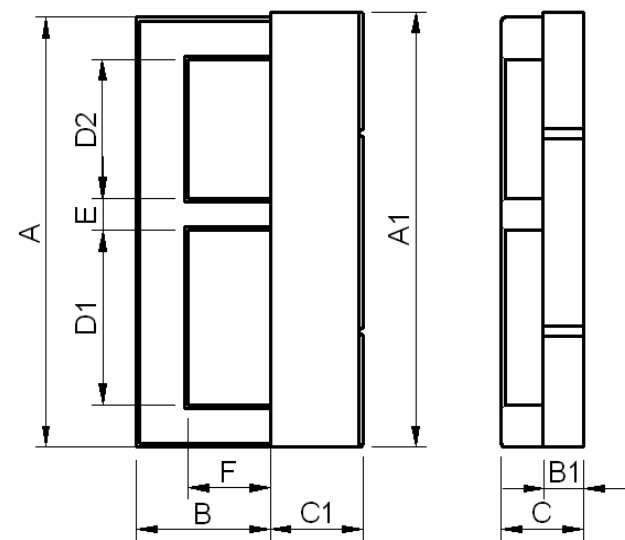
EI Cores



型号 Type	尺寸 Dimensions						
	A	B	C	D	E	F	I
EI1614	16.0±0.3	12.7±0.3	4.8±0.2	4.0±0.2	12.1	10.8±0.2	2.0±0.2
EI1916	19.0±0.3	13.55±0.3	4.85±0.25	4.85±0.25	14.0±0.3	11.3±0.3	2.35±0.2
EI2219	22.0±0.4	15.0±0.4	5.75±0.25	5.75±0.25	16.0±0.4	11.0±0.2	4.0±0.2
EI2519	25.1±0.4	16.25±0.4	6.75±0.25	6.5±0.3	19.1min	13.25±0.25	2.75±0.15
EI2820	28.0±0.4	17.3±0.4	10.7±0.3	7.2±0.3	18.6min	12.8±0.2	3.5±0.15
EI3027	30.6±0.5	21.25±0.25	10.65±0.35	10.65±0.35	20.0min	16.5±0.3	5.5±0.2
EI3328	33.0±0.6	23.5±0.5	12.7±0.3	9.7±0.3	23.6min	19.0±0.5	5.0±0.3
EI4035	40.0±0.6	27.25±0.25	11.65±0.35	11.65±0.35	27.2min	20.25±0.25	7.5±0.3
EI5042	50.0±1.2	33.3±0.4	14.8±0.6	14.8±0.6	34.0min	24.8±0.4	9.0±0.4
EI70/56/20	70.0±1.5	45.5±0.5	19.5±0.5	19.5±0.5	50.0±0.5	35.5±0.5	10.5±0.5
EI118/104/35	118.0 ^{+1.5} _{-2.5}	86.5 ^{+0.75} _{-0.5}	35.0±0.7	35.0±0.5	82.0min	69.0±0.5	17.50±0.5
EI160/88/28	160.0±3.0	74.0 ^{+1.0} _{-0.5}	28.0±1.0	28.0±1.0	129.0min	60.0 ^{+1.0} _{-0.5}	14.0±0.5
EI200/150/40	200.0±4.0	130.0±1.0	40.0±1.5	40.0±1.5	157.0min	110.0±1.5	20.0±1.0

型号 Type	磁芯参数 Core parameter				重量 weight (g/prs)	AL(nH/N ²)		
	C1 (mm ⁻¹)	Le (mm)	Ae (mm ²)	Ve (mm ³)		HP2 (±25%)	LP3 (±25%)	LP3A (±25%)
EI1614	1.900	35.9	18.9	677	3.4	2400	1250	1250
EI1916	1.716	38.7	22.6	875	4.6	2900	1500	1500
EI2219	1.148	42.5	37.0	1572	8.4	4300	1950	1950
EI2519	1.221	48.6	39.8	1932	12.3	4200	1900	1900
EI2820	0.589	49.6	84.2	4174	22	9000	3400	3400
EI3027	0.535	58.9	110.2	6498	25.50		3900	3900
EI3328	0.563	67	119	7976	41		3860	3860
EI4035	0.524	77.2	147.4	11374	64		3900	
EI5042	0.409	94.0	230	21600	115		5100	
EI70/56/20	0.341	132	388	51330	266		7270	
EI118/104/35	0.195	238	1219	290100	1440		11000	
EI160/88/28	0.212	249	1176	292600	1010		8600	
EI200/150/40	0.254	404	1589	641330	3200		7200	

EI型磁心 EI Cores



型号 Type	尺寸 Dimensions									
	A	B	C	D1	D2	E	F	A1	B1	C1
EI20.4	20.4±0.25	6.5±0.1	4.0±0.2	8.3±0.2	6.6±0.2	1.5±0.15	4.0±0.15	20.65 ^{+0.5}	2.0±0.1	4.5±0.15
EI27.7	27.7±0.25	8.5±0.1	4.5±0.2	13.6±0.2	8.4±0.2	1.5±0.15	6.0±0.15	27.7 ^{+0.3 -0.2}	3.0±0.1	4.5±0.2

型号 Type	磁芯参数 Core parameter				重量 weight (g/prs)	AL(nH/N ²)	
	C1 (mm ⁻¹)	Le (mm)	Ae (mm ²)	Ve (mm ³)		LP3 (±25%)	LP3A (±25%)
EI20.4	2.15	22.8	10.6	241	2.3	900	860
EI27.7	2.538	30.2	11.9	360.6	3.9	900	860

EER,ETD和EC型磁心

EER,ETD&EC Cores

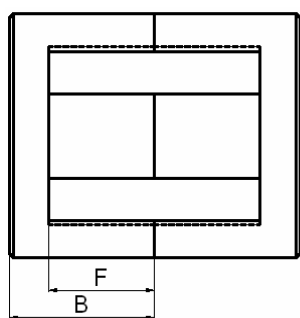


图1 Fig.1

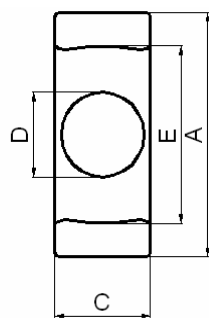


图2 Fig.2

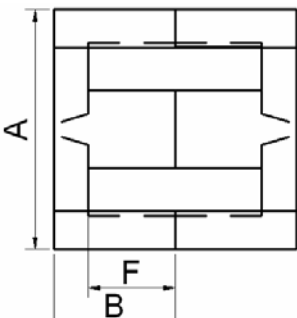


图3 Fig.3

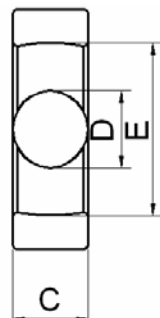
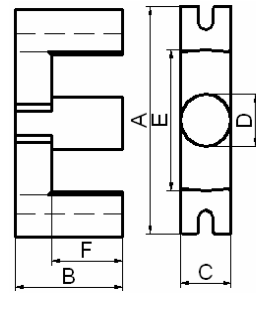


图4 Fig.4

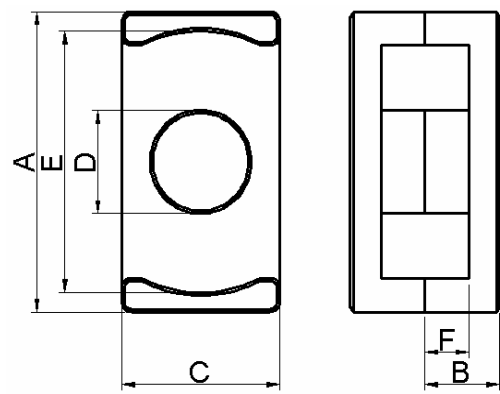


型号 Type	图号 Fig	尺寸 Dimensions (mm)						
		A	B	C	D	E	F	I
EER1916	1	19.0±0.3	8.05±0.2	5.1±0.2	5.1±0.2	14.5±0.3	5.65±0.15	
EER2828	1	28.55±0.55	14.0±0.2	11.4±0.25	9.9±0.25	21.8min	9.65±0.25	
EER2834	1	28.55±0.55	16.9±0.25	11.4±0.25	9.9±0.25	21.8min	12.5±0.25	
EER3435	1	34.2±0.8	17.3±0.2	10.8±0.3	10.8±0.3	26.3±0.7	12.1±0.3	
EER3541	1	35.0±0.7	20.9±0.25	11.3±0.4	11.3±0.3	25.6min	14.9±0.3	
EER4042	1	40.15±0.65	21.3±0.2	15.0±0.2	14.0±0.25	30.7min	15.3±0.2	
EER4244	1	42.0±0.7	22.4±0.25	15.5±0.3	15.5±0.3	29.2min	15.4±0.3	
EER5657	1	56.0±1.5	28.4±0.5	24.0±0.5	20.0±0.5	44.0min	20.4±0.5	
ETD29	2	29.0±0.8	15.8±0.2	9.5±0.3	9.5±0.3	22.7±0.7	11.0±0.3	
ETD34	2	34.2±0.8	17.3±0.2	10.85 ^{+0.4} _{-0.35}	10.8±0.3	26.3±0.7	12.1±0.3	
ETD39	2	39.1±0.9	19.8±0.2	12.55 ^{+0.4} _{-0.35}	12.5±0.3	30.1±0.8	14.6±0.4	
ETD44	2	44.0±1.0	22.3±0.2	14.9±0.5	14.8±0.4	33.3±0.8	16.5±0.4	
ETD49	2	48.7±1.1	24.7±0.2	16.4±0.5	16.3±0.4	37.0±0.9	18.1±0.4	
ETD59	2	59.8±1.3	31.0±0.2	21.65±0.45	21.65±0.45	44.7±1.1	22.5±0.4	
EC41	3+3	40.6±1.0	19.5±0.15	11.6±0.3	11.6±0.3	27.05±0.75	13.9±0.4	
EC70	3+3	70.0±1.7	34.5±0.5	16.4±0.5	16.4±0.5	44.7±1.1	22.3±0.9	
EC79	3+3	79.0±1.7	42.0±0.5	16.4±0.5	16.4±0.5	52.8min	30.25±0.45	
EC90	3+3	90.0±1.8	45.0±0.65	30.0±1.0	30.0±1.0	70.0±1.5	35.5±0.5	
EC120	3+3	120.0±2.0	50.5±0.65	30.0±1.0	30.0±1.0	93.3min	35.5±0.5	
EIC120	3+4	120.0±2.0	50.5±0.65	30.0±1.0	30.0±1.0	93.3min	35.5±0.5	15.0±0.65

型号 Type	磁芯参数 Core parameter				重量 weight (g/prs)	AL(nH/N ²)	
	C1 (mm ⁻¹)	Le (mm)	Ae (mm ²)	Ve (mm ³)		LP3 (±25%)	LP3A (±25%)
EER1916	1.781	39.9	22.4	893	4	1270	1270
EER2828	0.765	63.6	83.1	5286	28	2700	2700
EER2834	0.908	75.0	82.6	6194	32	2400	2400
EER3435	0.819	79.1	96.6	7645	39	2500	2500
EER3541	0.834	91.2	109.2	9957	52	2600	2600
EER4042	0.613	96.4	157.2	15163	79	3600	3600
EER4244	0.471	96.7	205.5	19879	102	4690	4690
EER5657	0.381	129.6	340.1	44080	200	5500	5500
ETD29	0.961	70.2	73.0	5122	28	2500	2500
ETD34	0.809	79.1	97.7	7729	40	2780	2780
ETD39	0.740	92.6	125.2	11597	60	3150	3150
ETD44	0.596	103.7	173.8	18022	94	3700	3700
ETD49	0.540	114.4	211.8	24227	124	4140	4140
ETD59	0.383	141.2	368.4	52000	260	5400	5400
EC41	0.738	89.3	121	10800	99	3500	3500
EC70	0.486	138.2	284.3	39286	255	4800	
EC79	0.623	174.7	280.5	49000	250	3630	
EC90	0.332	216.0	650.7	140541	665	6000min	
EC120	0.314	247.3	786.3	194440	1000	6300min	
EIC120	0.232	184.0	794.0	146310	750	11080.00	

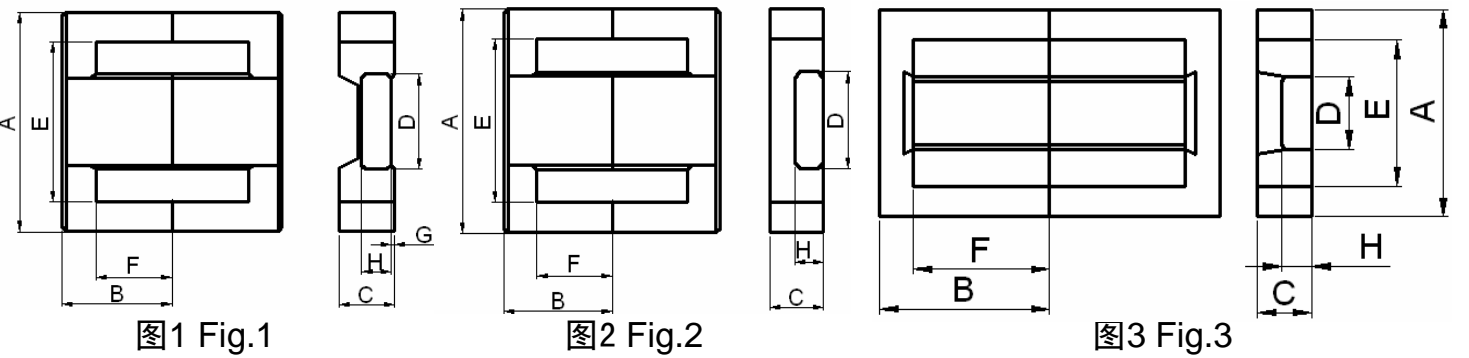
平面ER型磁心

Planar ER Cores



型号 Type	尺寸 Dimensions (mm)					
	A	B	C	D	E	F
PER0904	9.35±0.15	2.45±0.1	4.9±0.1	3.4±0.1	7.5min	1.65±0.15
PER1105	10.8±0.2	2.45±0.1	5.8±0.1	4.0±0.1	8.7min	1.55±0.15
PER1406	14.5±0.2	2.95±0.1	6.7±0.1	4.7±0.1	11.6min	1.65±0.15
PER19.5/9.2	19.5±0.5	4.6±0.1	7.5±0.3	7.5±0.2	13.8min	2.0±0.15
PER23/7.2	23.2±0.45	3.6±0.1	12.5±0.3	8.0±0.2	19.8min	1.6±0.15
PER25.5/9.2	25.5±0.5	4.6±0.1	7.5±0.3	7.5±0.2	19.8min	2.0±0.15
PER35/9.2	35.0±0.5	4.6±0.1	7.5±0.3	7.5±0.2	29.3min	2.0±0.15

型号 Type	磁芯参数 Core parameter				重量 weight (g/prs)	AL(nH/N ²)	
	C1 (mm ⁻¹)	Le (mm)	Ae (mm ²)	Ve (mm ³)		LP3 (±25%)	LP3A (±25%)
PER0904	1.647	14.0	8.5	120.0	0.7	1300	1300
PER1105	1.230	14.7	11.9	174	1.0	1400	1400
PER1406	1.079	19.0	17.6	334	1.8	1600	1600
PER19.5/9.2	0.565	23.7	41.8	990	5.0	3770	3770
PER23/7.2	0.530	26.6	50.2	1340	3.2	3900	3900
PER25.5/9.2	0.731	29.9	40.9	1221	6.0	2920	2920
PER35/9.2	0.988	39.6	40.1	1588	8.0	2160	2160



型号 Type	图号 Fig	尺寸 Dimensions							
		A	B	C	D	E	F	G(Ref)	H
EFD10	1	10.5±0.3	5.2±0.1	2.7±0.1	4.6±0.2	7.65±0.3	3.75±0.15	0.2	1.5±0.2
EFD11.8	2	11.8±0.25	6.05±0.2	4.7±0.15	4.5±0.15	8.7±0.3	4.55±0.15		2.9±0.1
EFD12	1	12.5±0.3	6.2±0.2	3.5±0.15	5.4±0.2	9.0±0.3	4.5±0.2	0.2	2.0±0.2
EFD13	2	13.5±0.3	8.0±0.2	3.0±0.2	6.0±0.15	10.5±0.3	4.65±0.15		1.5±0.1
EFD13A	2	13.4±0.3	11.2±0.2	4.5±0.2	5.3±0.15	9.8±0.3	8.6±0.15		3.0±0.1
EFD15	1	15.0±0.5	7.5±0.2	4.7±0.2	5.3±0.3	11.0±0.4	5.5±0.3	0.2	2.4±0.2
EFD16.5	3	16.55±0.25	19.4±0.15	4.45±0.1	5.8±0.1	11.4min	16.45 ^{+0.2} _{-0.15}		2.45±0.15
EFD20	1	20.0±0.6	10.0±0.3	6.65±0.2	8.9±0.2	15.4±0.5	7.7±0.3	0.15	3.6±0.2
EFD21	2	21.2±0.4	11.8±0.3	5.9±0.2	9.4±0.2	15.8min	9.2±0.3		3.3±0.2
EFD22	3	22.2±0.4	24.2±0.2	6.5±0.2	9.2±0.2	16.2±0.3	21.0±0.2		3.7±0.2
EFD25	1	25.0±0.7	12.5±0.3	9.1±0.3	11.4±0.3	18.7±0.7	9.3±0.3	0.6	5.2±0.3
EFD28.9	3	28.9±0.5	27.8±0.2	6.2±0.2	14.2±0.3	20.9±0.5	23.8±0.2		3.4±0.2
EFD30	1	30.0±0.9	15.0±0.3	9.1±0.3	14.6±0.4	22.4±0.8	11.2±0.3	0.8	4.9±0.3

型号 Type	磁芯参数 Core parameter				重量 weight (g/prs)	AL(nH/N ²)	
	C1 (mm ⁻¹)	Le (mm)	Ae (mm ²)	Ve (mm ³)		LP3 (±25%)	LP3A (±25%)
EFD10	3.30	23.7	7.2	171	0.9	500	500
EFD11.8	2.01	29.7	14.8	440	1.6	900	900
EFD12	2.50	28.5	11.4	325	1.7	700	700
EFD13	3.07	38.7	12.6	487	2.5	630	630
EFD13A	2.69	45.52	16.94	771	3	550	550
EFD15	2.27	34	15	510	2.8	700	700
EFD16.5	0.49	22.81	46.3	1056	24	3800	3800
EFD20	1.52	47	31	1460	7	1150	1150
EFD21	1.70	53.1	31.3	1659	9.6	1100	1100
EFD22	2.73	101	37	3737	21	740	740
EFD25	0.98	57	58	3300	16	2000	2000
EFD28.9	2.37	116	49	5684	29	850	850
EFD30	0.98	68	69	4700	24	1900	1900

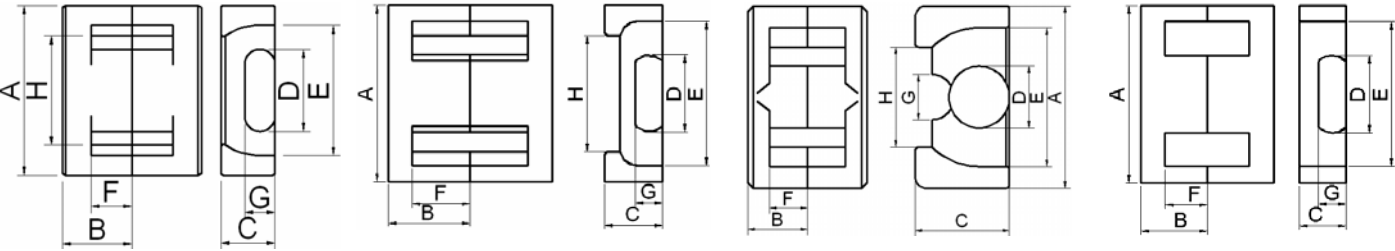


图1 Fig.1

图2 Fig.2

图3 Fig.3

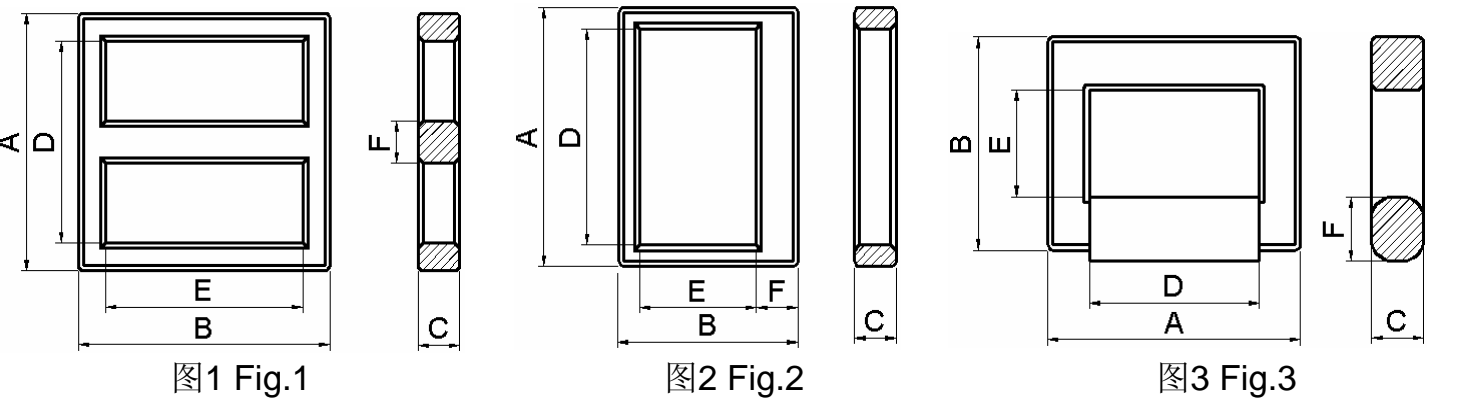
图4 Fig.4

型号 Type	图号 Fig	尺寸 Dimensions							
		A	B	C	D	E	F	G	H
EPC10.2	1	10.25±0.25	4.05±0.1	3.4±0.1	5.0±0.1	7.6min	2.65±0.1	1.9±0.1	5.6Ref
EPC13	2	13.3±0.3	6.6±0.2	4.6±0.2	5.6±0.2	10.5min	4.5±0.2	2.1±0.1	8.6Ref
EPC16	3	16.5±0.3	11.8±0.2	8.7±0.2	5.6±0.15	12.55±0.3	8.8±0.2	4.1±0.2	9Ref
EPC17	2	17.6±0.4	8.55±0.2	6.0±0.2	7.7±0.2	14.3min	6.05±0.2	2.8±0.2	12Ref
EPC19	2	19.1±0.5	9.75±0.2	6.0±0.2	8.5±0.2	15.8min	7.25±0.2	2.5±0.2	13.7Ref
EPC25	2	25.1±0.5	12.5±0.2	8.0±0.2	11.5±0.2	20.6min	9.0±0.3	4.0±0.2	17.5Ref
EPC27	2	27.1±0.5	16.0±0.2	8.0±0.2	13.0±0.3	21.6min	12.0±0.3	4.0±0.2	19.0Ref
EPC30	2	30.1±0.5	17.5±0.2	8.0±0.2	15.0±0.3	23.6min	13.0±0.3	4.0±0.2	20.4Ref
EPC50	4	50.5±0.6	25.9±0.3	9.0±0.3	23.5±0.4	37.6	18.8±0.3	5.0±0.3	

型号 Type	磁芯参数 Core parameter				重量 weight (g/prs)	AL(nH/N ²)	
	C1 (mm ⁻¹)	Le (mm)	Ae (mm ²)	Ve (mm ³)		LP3 (±25%)	LP3A (±25%)
EPC10.2	1.896	17.8	9.39	167	1.1	900	900
EPC13	2.448	30.6	12.5	383	2.1	870	870
EPC16	1.386	44.1	31.8	1402	9	1480	1480
EPC17	1.763	40.2	22.8	917	4.5	1150	1150
EPC19	2.031	46.1	22.7	1047	5.3	940	940
EPC25	1.276	59.2	46.4	2747	13	1560	1560
EPC27	1.339	73.1	54.6	3991	18	1540	1540
EPC30	1.338	81.6	61.0	4978	23	1570	1570
EPC50	1.080	121.4	112.4	13640	69	2000	2000

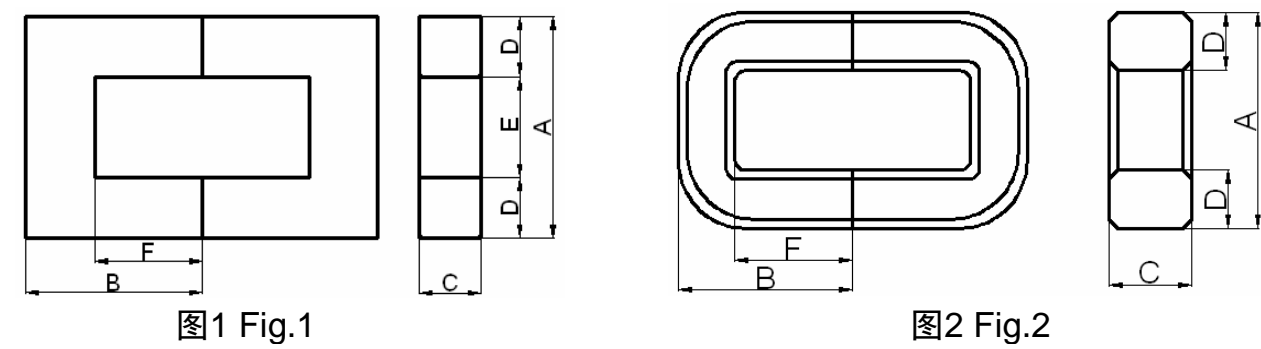
ET和FT型磁心

ET&FT Cores



型号 Type	图号 Fig	尺寸 Dimensions					
		A	B	C	D	E	F
ET2020	1	20.1±0.4	20.1±0.4	4.4±0.2	15.7min	15.7min	4.0±0.2
ET2424	1	24.2±0.5	24.2±0.3	4.0±0.3	19.0min	19.0min	4.0±0.3
ET2626	1	26.0 ^{+0.4} _{-0.2}	26.0 ^{+0.4} _{-0.2}	4.5±0.2	21.0±0.3	21.0±0.3	4.5±0.2
ET2828	1	28.45±0.55	28.45±0.55	5.0±0.3	22.0min	22.2min	5.0±0.3
ET2930	1	29.0±0.4	30.0±0.4	5.0±0.3	22.6min	23.6min	5.0±0.3
ET3535	1	35.3±0.6	35.3±0.6	7.5±0.3	26.8min	26.8min	7.3±0.25
FT19.5	3	19.5±0.3	14.2±0.6	5.0±0.2	12.9min	6.8min	4.0±0.2
FT20	2	20.6±0.3	14.1±0.25	4.6±0.2	15.7min	7.25min	4.2±0.2
FT21	2	21.5±0.5	14.9±0.3	4.5±0.3	16.2±0.3	7.6min	4.2±0.3

型号 Type	磁芯参数 Core parameter				重量 weight (g/prs)	AL(nH/N ²)		
	C1 (mm ⁻¹)	Le (mm)	Ae (mm ²)	Ve (mm ³)		HP1 (±25%)	HP2 (±25%)	HP3 (±25%)
ET2020	2.93	50.5	17.2	871	4.3	2150	3200	4300
ET2424	3.46	60.8	17.5	1060	5.6	1800	2550	3600
ET2626	3.21	68.1	21.2	1443	6.8	2000	2700	3800
ET2828	2.67	71.1	26.6	1890	9.6	2350	3300	4700
ET2930	2.70	74.3	27.5	2050	10	2350	3300	4650
ET3535	1.49	86.6	57.9	4970	25	4200	5900	8400
FT19.5	3.0	50.5	16.8	850	4.3	2300	3000	4100
FT20	4.8	64.4	13.5	866	3.7	1400	2000	2800
FT21	4.19	56.2	13.4	754	4.1	1450	2100	2900



型号 Type	图号 Fig	尺寸 Dimensions					
		A	B	C	D	E	F
UU9.8/7/3	1	9.8±0.2	7.1±0.2	2.7±0.2	2.8Ref	4.1min	4.25±0.2
UU10.5/8/5	1	10.5±0.4	7.8±0.3	5.0±0.2	2.5Ref	5.2min	5.25±0.25
UU16/10/6	1	16.0±0.4	10.0±0.2	6.0±0.2	4.57Ref	6.7min	6.0±0.15
UU30/13/6	1	30.0±0.5	12.7±0.15	6.25±0.15	6.25Ref	17.3min	6.2 ^{+0.25}
UU33/14/7	1	33.0±0.5	13.8±0.15	7.25 ^{+0.2} _{-0.15}	7.3Ref	18.0min	6.2 ^{+0.25}
UU65/64/40	1	65.0±1.5	63.5±1.0	40.0±0.5	20.0±0.5	24.4min	43.0±0.7
UU66/55/40	1	66.0±1.5	55.0±1.0	39.6±0.6	19.5±0.5	25.0min	36.5±1.0
UU73/34/28	1	72.8±1.5	33.7±1.0	27.9±0.5	13.8±0.5	45.0min	19.7±0.7
UU80/65/30	2	80.0 ^{+2.0} _{-1.0}	65.0±0.5	30.0±0.5	21.5±0.5		43.0±1.0
UU80/65/40	2	80.0 ^{+2.0} _{-1.0}	64.5 ^{+1.0}	40.0±1.0	21.5±0.5		43.0±1.0
UU80/85/40	1	80.0 ^{+3.0} _{-2.0}	85.0±1.0	40.0±1.0	20.0±0.5	40.0min	65.0±1.0
UU82/45/14	1	82.0 ^{+3.0} _{-2.0}	45.0±0.8	14.0±0.5		53.0min	31.0±0.8
UU93/76/30	1	93.0±2.0	76.0±0.5	30.0±0.5		34.6min	48.0±0.9
UU93/79/28	1	93.0±2.0	79.0±1.0	28.0±1.0	28.0±0.5	34.6min	49.5±1.0
UU95/85/40	1	95.0 ^{+3.0} _{-2.0}	85.0±1.0	40.0±1.0	20.0Ref	54.5min	65.0±0.5
UU96/79/30	1	96.0±1.0	79.0±0.5	30.0±0.5	30.0±0.5		49.0±0.5
UU100/57/25	1	101.6±2.0	57.1±0.4	25.4±0.8	25.4±0.8	50.8±1.0	31.7±0.75
UU100/75/30	1	100.0±3.0	75.5±1.0	30.0±1.0	30.0±1.0	37.5min	45.0±0.75
UU110/95/40	1	110.0±2.5	95.0±1.0	40.0±1.0	41.0±1.0	50.0±1.5	65.0±1.0
UU114/78/38	1	114.0±2.5	77.5±1.0	37.5±1.0	30.0±0.5	54.0±1.5	48.0±1.0
UU120/80/40	1	120.0±3.0	80.0±1.0	40.0±1.5	30.0±0.5	59.0min	50.5±1.0
UU120/100/40	1	120.0±3.0	100.0±1.0	40.0±1.5	30.0±0.5	59.0min	70.2±1.5
UU120/118/40	1	120.0±3.0	117.5±1.0	40.0±1.5	30.0±0.5	59.0min	87.5±1.5
UU126/91/20	1	126.0±3.0	91.0±1.0	20.0±0.6	28.0Ref	70.0±2.0	63.0±2.0
UU140/95/39	1	140 ^{+5.0} _{-1.0}	95.0 ^{+2.0}	39.0±1.5	40.0±1.0	60.0min	56.5 ^{+1.0}
UU160/125/20	1	162.0±3.0	125.0±0.5	20.0±1.0	50.5±0.5	60.0min	75.0±1.5

型号 Type	磁芯参数 Core parameter				重量 weight (g/prs)	AL(nH/N ²)	
	C1 (mm ⁻¹)	Le (mm)	Ae (mm ²)	Ve (mm ³)		HP2 (±25%)	LP3 (±25%)
UU9.8/7/3	4.46	34.2	7.6	262	1.3	885	
UU10.5/8/5	3.20	40.1	12.5	501	2.5	1160	
UU16/10/6	1.97	50.9	25.9	1318	6.7	2075	
UU30/13/6	2.01	79.9	39.8	3178	17	2800	
UU33/14/7	1.57	84.8	54.1	4591	23	3000	
UU65/64/40	0.355	286	807	231090	1130		7000
UU66/55/40	0.342	260	760	197730	960		6000
UU73/34/28	0.549	212	387	82075	410		4900
UU80/65/30	0.485	314	647	203000	1010		4300
UU80/65/40	0.366	311	850	265000	1350		5000
UU80/85/40	0.543	435	801	348000	1600		4000
UU82/45/14	1.376	275	200	54900	270		1500
UU93/76/30	0.421	354	840	297000	1520		5500
UU93/79/28	0.454	362	797	289000	1440		5000
UU95/85/40	0.540	430	796	343000	1670		4600
UU96/79/30	0.403	360	894	322000	1610		6300
UU100/57/25	0.478	308	645	199080	1000		5000
UU100/75/30	0.386	354	917	324620	1650		6060
UU110/95/40	0.320	466	1456	679630	2765		7200
UU114/78/38	0.352	387	1100	426000	2160		6900
UU120/80/40	0.349	421	1205	507280	2420		6900
UU120/100/40	0.414	503	1216	611650	2890		4720
UU120/118/40	0.470	564	1200	677000	3270		4800
UU126/91/20	0.857	480	560	268800	1360		2800
UU140/95/39	0.321	497	1548	741500	3680		7000
UU160/125/20	0.574	578	1007	582000	2880		3500

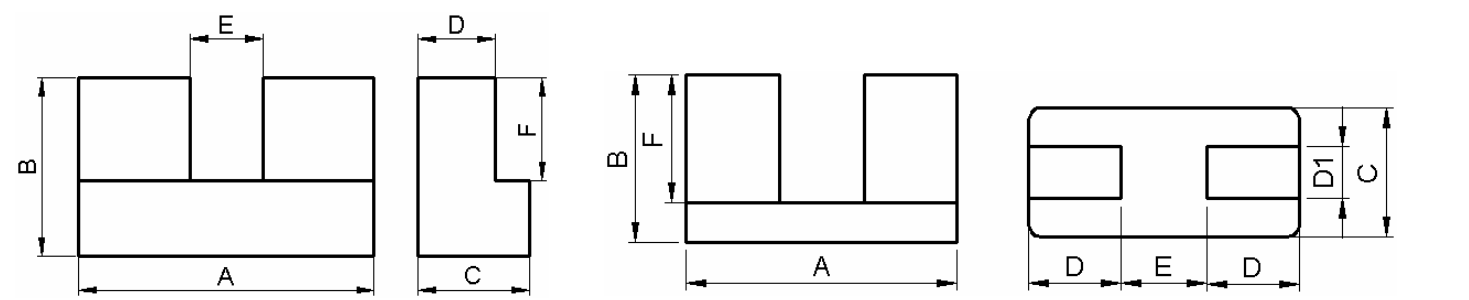


图1 Fig.1

图2 Fig.2

型号 Type	图号 Fig	尺寸 Dimensions						
		A	B	C	D	D1	E	F
UF20	1	20.1±0.35	14.0±0.2	2.4±0.1	1.65±0.1		8.0 _{-0.4}	9.6±0.2
UF21	2	20.6±0.5	12.75±0.2	9.85±0.25	7.05±0.2	4.0±0.15	6.5±0.2	9.75±0.2
UF34	1	33.7±0.6	19.6±0.2	12.7±0.3	8.8±0.3		8.3±0.3	11.3±0.3

型号 Type	磁芯参数 Core parameter				重量 weight (g/prs)	AL(nH/N ²)	
	C1 (mm ⁻¹)	Le (mm)	Ae (mm ²)	Ve (mm ³)		LP3 (±25%)	LP3A (±25%)
UF20	6.407	69.20	10.8	751.8	4.0	440	440
UF21	2.370	67.80	28.6	1938	10.8	900	900
UF34	0.873	94.77	108.6	10290	57.0	2900	2900

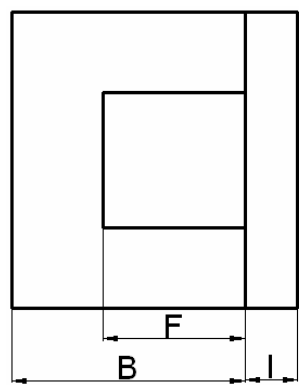


图1 Fig.1

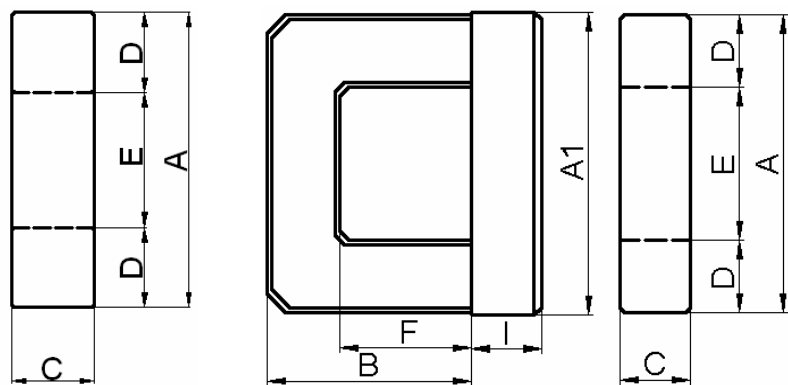


图2 Fig.2

型号 Type	图号 Fig	尺寸 Dimensions							
		A	B	C	D	E	F	A1	I
UI25	2	25.0±0.3	16.0 _{-0.2}	6.0±0.3	6.0Ref	12.7min	9.9±0.1	32.0±0.3	6.1±0.1
UI25.4	1	25.5 ^{+0.4} _{-0.3}	16.25 ^{+0.25}	6.25±0.3	6.45Ref	12.4min	10.0 ^{+0.3}		6.25±0.1
UI32	2	32.0±0.5	22.05 ^{+0.2}	9.7±0.3	7.7Ref	16.4min	14.55±0.2	33.4±0.4	8.2±0.1
UI39	2	39.0±0.5	20.0±0.1	13.0±0.3	12.5Ref	13.6min	11.0±0.2	39.5±0.4	13.0±0.1
UI93	1	93.0±1.8	76.0±0.5	30.0±0.8	28.0±0.7	36.2±1.2	48.0±0.9		27.5±0.5

型号 Type	磁芯参数 Core parameter				重量 weight (g/prs)	AL(nH/N ²)		
	C1	Le	Ae	Ve		HP2	LP1	LP3
	(mm ⁻¹)	(mm)	(mm ²)	(mm ³)		min	(±25%)	(±25%)
UI25	1.80	64.7	36.0	2328	12.5		1800	
UI25.4	1.65	38.9	64.3	2500	19.0	2600		
UI32	1.42	86.9	61.2	5030	33.0		2200	
UI39	0.606	83.5	137.7	11500	71.0		5000	
UI93	0.307	258	840	217000	1120			8700

UI型磁心 UI Cores(Frame&Bar Cores)

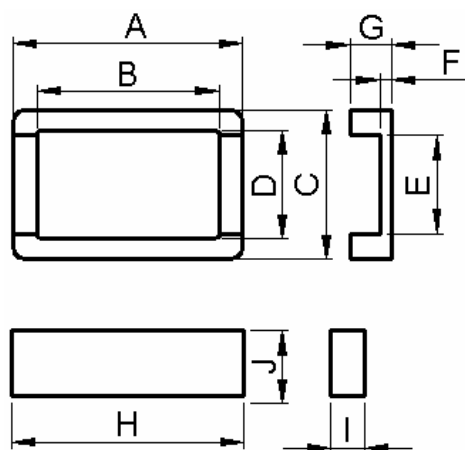


图1 Fig.1

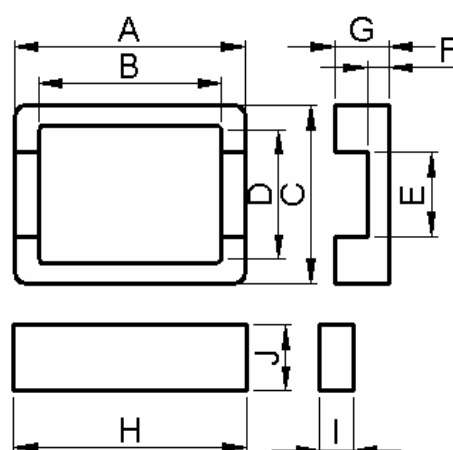


图2 Fig.2

型号 Type	图号 Fig	尺寸 Dimensions									
		A	B	C	D	E	F	G	H	J	I
UI9.8	1	23.8±0.3	19.2±0.3	9.8±0.2	7.3±0.2	5.7±0.15	1.45±0.1	3.65±0.1	24.3±0.3	4.4±0.1	2.1±0.05
UI11.7	1	21.0±0.3	16.25±0.3	11.7±0.3	8.8±0.2	7.0±0.15	1.2±0.1	3.5±0.1	21.4±0.4	5.5±0.1	1.9±0.05
UI14.8	2	19.7±0.3	15.6±0.3	14.8±0.3	11.4±0.2	7.0±0.15	1.95±0.1	4.6±0.1	19.9±0.4	5.45±0.1	2.8±0.05

型号 Type	磁芯参数 Core parameter				重量 weight (g/prs)	AL(nH/N ²)	
	C1 (mm ⁻¹)	Le (mm)	Ae (mm ²)	Ve (mm ³)		LP3 (±25%)	LP3A (±25%)
UI9.8	6.96	55	7.9	434.5	2.7	450	430
UI11.7	5.063	40	7.9	312	2.5	650	620
UI14.8	3.7	46.6	12.6	585.8	3.7	540	510

UR型磁心 UR Cores

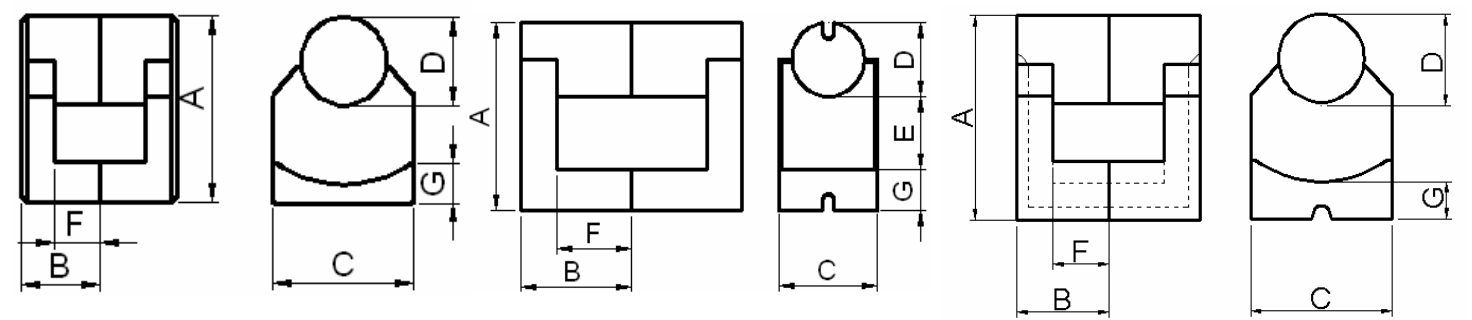


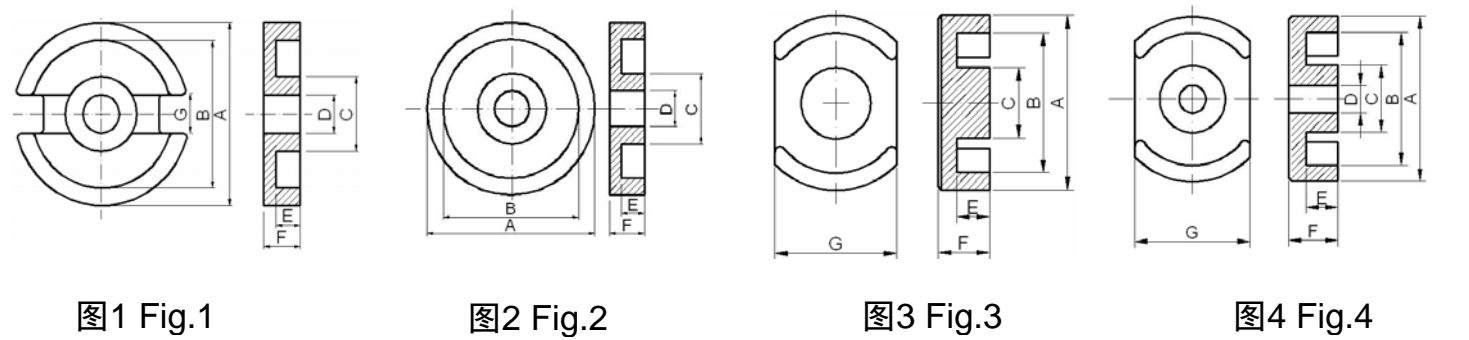
图1 Fig.1

图2 Fig.2

图3 Fig.3

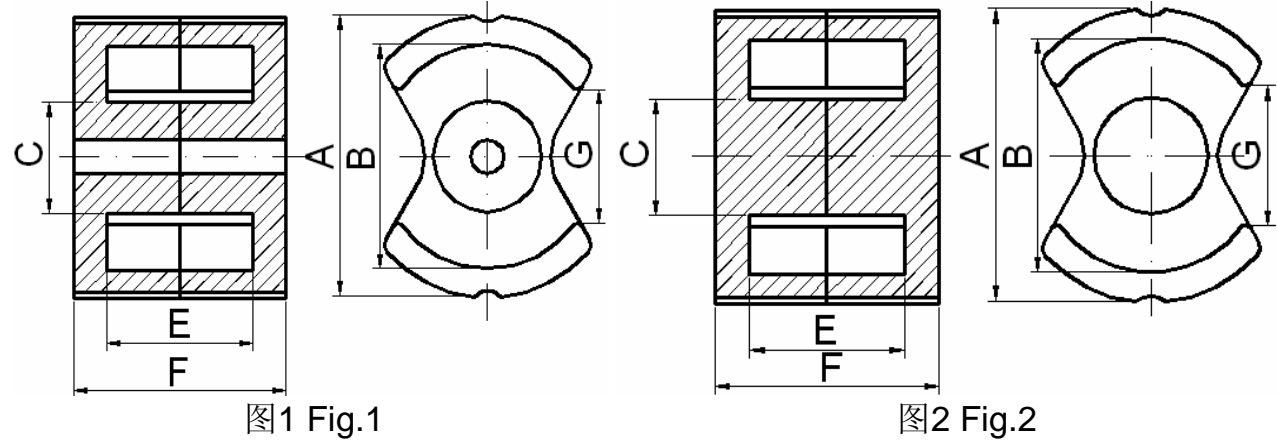
型号 Type	图号 Fig	尺寸 Dimensions						
		A	B	C	D	E	F	G
UR15	1	15.0±0.4	5.95±0.2	11.7±0.2	7.1±0.2		3.8±0.2	3.1±0.3
UR16.5	3	16.5±0.4	7.0±0.15	11.7±0.3	7.1±0.2		4.0±0.2	3.0Ref
UR18.5	2	18.5±0.4	11.2±0.3	10.0±0.3	7.0±0.25	7.2min	7.0±0.25	4.0Ref

型号 Type	磁芯参数 Core parameter				重量 weight (g/prs)	AL(nH/N ²)	
	C1 (mm ⁻¹)	Le (mm)	Ae (mm ²)	Ve (mm ³)		LP3 (±25%)	LP3A (±25%)
UR15	1.180	37.4	31.8	1189	5.2	1600	1530
UR16.5	1.092	40.4	37.0	1495	7.5	1700	1670
UR18.5	1.466	57.90	39.5	2287	11.2	1380	1310



型号 Type	图号 Fig	尺寸 Dimensions						
		A	B	C	D	E	F	G
P9/5	1+1	9.15±0.15	7.65±0.15	3.8±0.1	2.05±0.05	1.88±0.07	2.65±0.05	2.0±0.2
P14/8	1+1	14.05±0.25	11.8±0.2	6.0±0.2	3.0±0.1	2.9±0.1	4.2±0.05	3.3±0.6
PT14/8	1+4	14.05±0.25	11.8±0.2	5.9±0.2	3.1±0.1	2.9±0.1	4.15±0.1	9.4±0.2
P18/11	1+1	18.0±0.4	15.15±0.25	7.4±0.2	3.05±0.1	3.7±0.1	5.3±0.1	3.8±0.6
PT18/11	1+4	18.0±0.4	15.15±0.25	7.4±0.2	3.05±0.1	3.7±0.1	5.3±0.1	11.94±0.2
P22/13	1+1	21.6±0.4	18.2±0.3	9.25±0.2	4.45±0.15	4.7±0.1	6.7±0.1	3.8±0.6
P22/13A	1+1	21.6±0.4	18.2±0.3	9.0 ^{+0.25} _{-0.2}	4.45±0.15	4.7±0.1	6.7±0.1	3.8±0.6
PT23/11	2+4	22.9±0.45	18.2±0.3	9.7±0.2	5.1±0.1	3.75±0.1	5.5±0.1	15.2±0.25
P26/16	1+1	25.5±0.5	21.5±0.3	11.3±0.2	5.5±0.15	5.6±0.1	8.0±0.1	3.8±0.6
PT26/16	1+4	25.5±0.5	21.6±0.4	11.4±0.2	5.6±0.15	5.6±0.1	8.0±0.1	3.8±0.6
P30/19	1+1	30.0±0.5	25.4±0.4	13.3±0.2	5.5±0.15	6.6±0.1	9.4±0.1	4.3±0.6
DS3019	3+3	30.0±0.5	25.4±0.4	13.45±0.2		6.6±0.1	9.45±0.1	20.3±0.25
DS3319	3+3	33.2±0.5	26.6±0.4	13.3±0.3		6.5±0.15	9.4±0.1	23.7±0.3
DS3324	3+3	33.2±0.5	26.6±0.4	13.3±0.3		9.25±0.15	12.05±0.2	23.7±0.3
DS4026	3+3	39.8±0.5	33.2±0.5	16.0±0.25		9.9±0.15	13.5±0.2	28.3±0.25
P48/30	1+1	47.3±0.7	40.0min	20.0max	5.35±0.25	10.15±0.35	14.8±0.3	7.75Ref

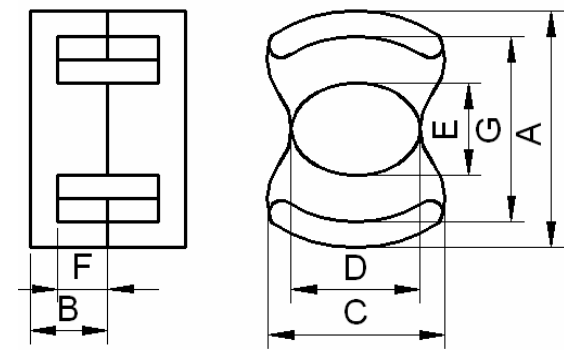
型号 Type	磁芯参数 Core parameter				重量	AL(nH/N ²)	
	C1	Le	Ae	Ve	weight	LP3	LP3A
	(mm ⁻¹)	(mm)	(mm ²)	(mm ³)	(g/prs)	(±25%)	(±25%)
P9/5	1.24	12.5	10.1	126	0.8	1100	1100
P14/8	0.79	19.8	25.1	495	3.2	2000	2000
PT14/8	0.91	21.1	23.3	492	2.8	1700	1700
P18/11	0.597	25.80	43.3	1120	6	2850	2850
PT18/11	0.67	27.2	40.6	1110	6	2600	2600
P22/13	0.497	31.5	63.4	2000	13	3550	3550
P22/13A	0.525	31.5	60.0	2000	12	3500	3500
PT23/11	0.47	28.6	61	1740	10.5	3800	3800
P26/16	0.40	37.6	93.9	3530	20	4600	4600
PT26/16	0.50	38.4	77.0	2960	18	4400	4400
P30/19	0.33	45.2	137	6190	34	5750	5750
DS3019	0.412	49.5	120	5940	31	5400	5400
DS3319	0.35	51.44	147	7561	30	6000	6000
DS3324	0.42	61.9	147.4	9124	36	5200	5200
DS4026	0.34	71.3	205	14617	56	6000	6000
P48/30	0.221	73.3	331.7	24310	140	7650min	7650min



型号 Type	图号 Fig	尺寸 Dimensions (mm)						
		A	B	C	D	E	F	G
PM50/39	1	50.0 _{-1.7}	39.0 ^{+1.3}	20.0 _{-0.6}	5.4 ^{+0.2}	26.4 ^{+0.8}	39.0 _{-0.4}	23.4min
PM62/49H	2	62.0 _{-2.0}	48.8 ^{+1.5}	25.5 _{-0.6}		33.4 ^{+0.8}	49.0 _{-0.4}	29.0min
PM62/49	1	62.0 _{-2.0}	48.8 ^{+1.5}	25.5 _{-0.6}	5.4 ^{+0.2}	33.4 ^{+0.8}	49.0 _{-0.4}	29.0min
PM74/59	1	74.0 _{-3.0}	57.5 ^{+1.8}	29.5 _{-1.0}	5.4 ^{+0.3}	40.7 ^{+0.8}	59.0 _{-0.6}	34.0min
PM87/70	1	87.0 ^{+2.0} _{-3.0}	67.1 ^{+2.1}	31.7 _{-1.0}	8.5 ^{+0.3}	48.0 ^{+0.8}	70.0 _{-0.6}	39.4min
PM114/93	1	114.0 _{-5.0}	88.0 ^{+3.7}	43.0 _{-1.4}	5.4 ^{+0.4}	63.0 ^{+1.6}	93.0 _{-1.0}	52.0min

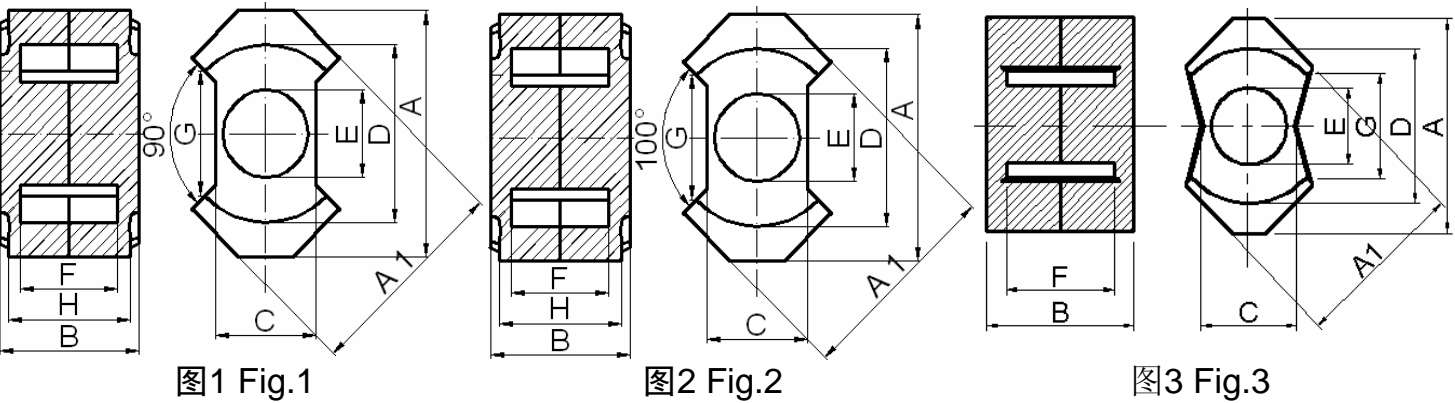
型号 Type	磁芯参数 Core parameter				重量 weight (g/prs)	AL(nH/N ²)	
	C1 (mm ⁻¹)	Le (mm)	Ae (mm ²)	Ve (mm ³)		LP3 (±25%)	LP3A (±25%)
PM50/39	0.227	84	370	31000	140	7700	7700
PM62/49H	0.190	109	570	62000	290	9700	9700
PM62/49	0.190	109	570	62000	280	9700	9700
PM74/59	0.162	128	790	101000	520	10000	10000
PM87/70	0.161	146	910	133000	820	13000	
PM114/93	0.116	200	1720	344000	1940	16000	

LM 型磁心 LM Cores



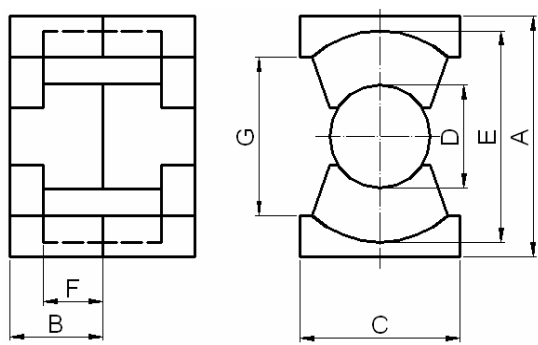
型号 Type	尺寸 Dimensions (mm)						
	A	B	C	D	E	F	G
LM6	17.6±0.45	5.7±0.2	14.2±0.3	10.0±0.2	7.0±0.2	3.6±0.1	13.4±0.3
LM8	23.0±0.45	7.7±0.15	17.7±0.2	12.8±0.2	9.0±0.2	5.0±0.15	18.4±0.4

型号 Type	磁芯参数 Core parameter				重量 weight (g/prs)	AL(nH/N ²)	
	C1 (mm ⁻¹)	Le (mm)	Ae (mm ²)	Ve (mm ³)		LP3 (±25%)	LP3A (±25%)
LM6	0.551	30.3	54.98	1670	4.2	3500	3500
LM8	0.446	40.5	90.77	3645	8.7	4500	4500



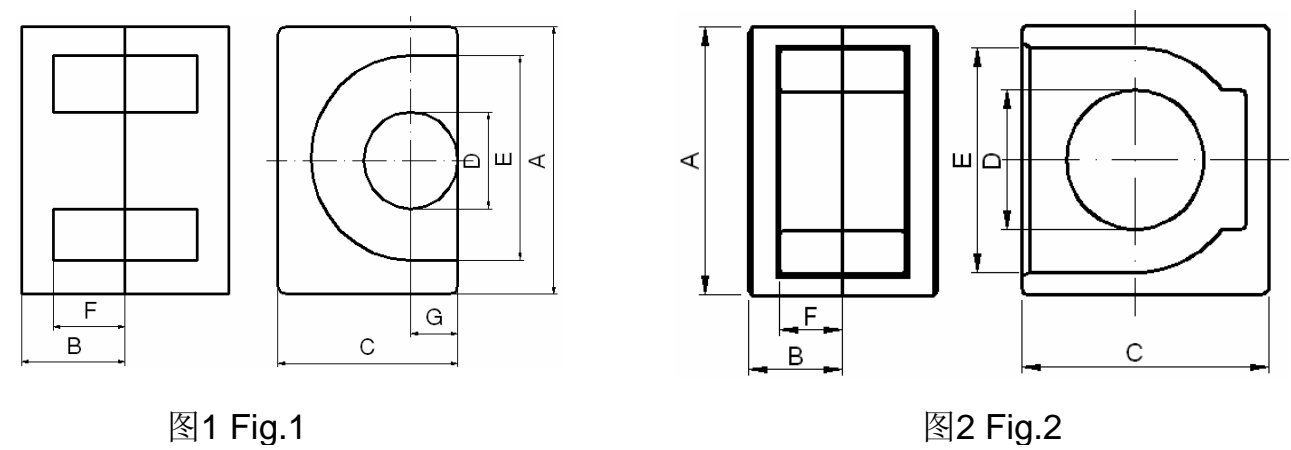
型号 Type	图号 Fig	尺寸 Dimensions								
		A1	A	B	C	D	E	F	G(min)	H(Ref)
RM4	1	9.6±0.2	10.75±0.25	10.4±0.2	4.5±0.1	8.15±0.2	3.8±0.1	7.2±0.2	5.8	9.0
RM5	1	12.05±0.25	14.65±0.3	10.4±0.2	6.6±0.2	10.4±0.2	4.8±0.1	6.5±0.2	6.0	9.1
RM6	1	14.4±0.3	17.55±0.35	12.4±0.2	8.0±0.2	12.65±0.25	6.3±0.1	8.2±0.2	8.8	10.4
RM6A	3	14.4±0.3	17.6±0.3	11.8±0.2	8.0±0.2	12.65±0.25	6.3±0.1	8.3±0.3	8.45	
RM8	1	19.3±0.4	22.75±0.45	16.4±0.3	10.75±0.25	17.3±0.3	8.4±0.2	11.0±0.3	9.5	14.3
RM10	1	24.15±0.55	27.85±0.65	18.6±0.3	13.25±0.25	21.65±0.45	10.7±0.2	12.7±0.3	10.9	16.2
RM10N	2	24.15±0.55	27.85±0.65	18.6±0.3	13.25±0.25	21.65±0.45	10.7±0.2	12.7±0.3	13.4	16.2
RM12	1	29.25±0.55	36.75±0.65	24.5±0.3	15.85±0.25	25.5±0.5	12.6±0.2	17.1±0.3	12.9	21.6
RM14	1	34.1±0.6	41.5±0.7	30.1±0.3	18.7±0.3	29.6±0.6	14.7±0.3	21.1±0.3	17.0	27.0

型号 Type	磁芯参数 Core parameter				重量 weight (g/prs)	AL(nH/N ²)		
	C1 (mm ⁻¹)	Le (mm)	Ae (mm ²)	Ve (mm ³)		HP2 (±25%)	LP3 (±25%)	LP3A (±25%)
RM4	1.69	23.3	13.8	322	1.7		950	950
RM5	0.935	23.2	24.8	574	3.3		1700	1700
RM6	0.784	29.2	37.0	1090	4.9	6000	2150	2150
RM6A	0.756	27.6	36.5	1007	5	6000	2230	2230
RM8	0.604	38.4	63.0	2440	12	8750	3300	3300
RM10	0.462	44.6	96.6	4310	22	11200	4050	4050
RM10N	0.478	44.0	92.0	4048	22	11200	4000	4000
RM12	0.388	56.6	146.0	8340	45		5050	5050
RM14	0.353	70.0	198.0	13900	74		5700	5700



型号 Type	尺寸 Dimensions						
	A	B	C	D	E	F	G(min)
PQ2016	20.5±0.4	8.1±0.1	14.0±0.4	8.8±0.2	18.0±0.4	5.15±0.15	12.0
PQ2020	20.5±0.4	10.1±0.1	14.0±0.4	8.8±0.2	18.0±0.4	7.15±0.15	12.0
PQ2222	22.0±0.4	10.9±0.1	14.0±0.4	8.8±0.2	19.5±0.4	7.65±0.15	14.0
PQ2620	26.5±0.45	10.1 ^{+0.1} _{-0.15}	19.0±0.45	12.0±0.2	22.5±0.45	5.75±0.15	15.5
PQ2625	26.5±0.45	12.4 ^{+0.1} _{-0.15}	19.0±0.45	12.0±0.2	22.5±0.45	8.05±0.15	15.5
PQ2820	27.75±0.45	10.0±0.2	19.0±0.45	12.0±0.2	23.5min	6.05±0.15	17.0
PQ3220	32.0±0.5	10.3 ^{+0.1} _{-0.15}	22.0±0.5	13.45±0.25	27.5±0.5	5.75±0.15	19.0
PQ3230	32.0±0.5	15.2 ^{+0.1} _{-0.15}	22.0±0.5	13.45±0.25	27.5±0.5	10.65±0.15	19.0
PQ3535	35.1±0.6	17.4 ^{+0.1} _{-0.15}	26.0±0.5	14.35±0.25	32.0±0.5	12.5±0.2	23.5
PQ4040	40.5±0.9	19.9 ^{+0.1} _{-0.15}	28.0±0.6	14.9±0.3	37.0±0.6	14.75±0.2	28.0
PQ5050	50.0±0.9	25.0 ^{+0.1} _{-0.15}	32.0±0.6	20.0±0.35	44.0±0.7	18.05±0.3	31.5

型号 Type	磁芯参数 Core parameter				重量 weight (g/prs)	AL(nH/N ²)	
	C1 (mm ⁻¹)	Le (mm)	Ae (mm ²)	Ve (mm ³)		LP3 (±25%)	LP3A (±25%)
PQ2016	0.605	37.4	62	2310	13	3380	3380
PQ2020	0.738	45.4	62	2790	15	3150	3150
PQ2222	0.798	49.5	62	3070	17	2700	2700
PQ2620	0.391	46.3	119	5490	31	6170	6170
PQ2625	0.472	55.5	118	6530	36	5250	5250
PQ2820	0.399	47.5	119	5660	32	6000	6000
PQ3220	0.326	55.5	170	9420	42	7310	7310
PQ3230	0.464	74.6	161	12000	55	5140	5140
PQ3535	0.448	87.9	196	17300	73	4860	
PQ4040	0.508	102	201	20500	95	4300	
PQ5050	0.346	113	328	37200	195	6720	

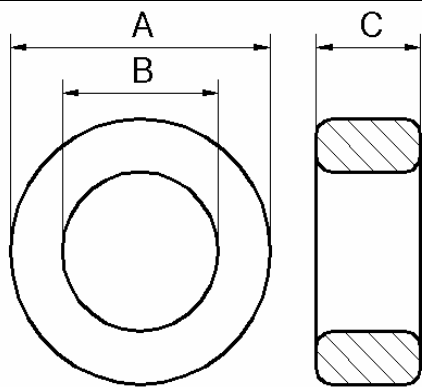


型号 Type	图号 Fig	尺寸 Dimensions						
		A	B	C	D	E	F	G
EP7	1	9.2±0.2	3.7±0.05	6.35±0.45	3.3±0.1	7.4±0.2	2.6±0.1	1.80Ref
EP10	1	11.5±0.3	5.1±0.1	7.65±0.2	3.3±0.15	9.4±0.2	3.7±0.1	1.85Ref
EP13	1	12.5±0.4	6.5+0-0.15	8.8±0.2	4.35±0.15	10.2±0.3	4.7±0.1	2.4Ref
EP14.5	2	14.5±0.2	5.15±0.15	13.55±0.15	7.5±0.1	12.1±0.15	3.45±0.1	
EP17	1	18.0±0.5	8.5±0.2	11.0±0.25	5.65±0.2	12.0±0.4	5.65±0.15	3.25Ref

型号 Type	磁芯参数 Core parameter				重量 weight (g/prs)	AL(nH/N ²)		
	C1 (mm ⁻¹)	Le (mm)	Ae (mm ²)	Ve (mm ³)		HP2 (±25%)	LP3 (±25%)	LP3A (±25%)
EP7	1.45	15.5	10.7	165	1.4	3700	840	840
EP10	1.70	19.3	11.3	215	2.8	3300	800	800
EP13	1.24	24.2	19.5	472	5.1	4900	1170	1170
EP14.5	0.48	23.07	48.0	1107	6.6		3300	3300
EP17	0.84	28.5	33.9	966	12	8850	1950	1950

环型磁心

RING Cores

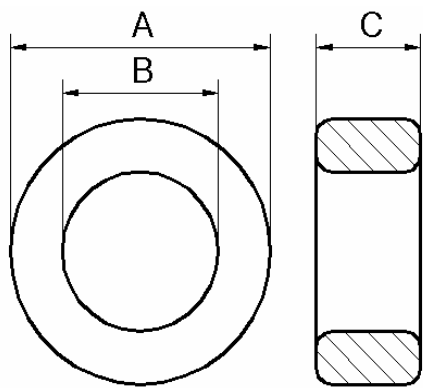


型号 Type	尺寸 Dimensions			重量 Weight (g/prs)	磁芯参数 Core parameter			
	A	B	C		C1 (mm ⁻¹)	Le (mm)	Ae (mm ²)	Ve (mm ³)
H8/4/4.2	8.0±0.3	4.0±0.3	4.2±0.3	0.75	2.158	17.4	8.1	140.6
H9/5/4	9.0±0.3	5.0±0.3	4.0±0.3	0.85	2.672	20.8	7.8	161.5
H10/6/5	10.0±0.4	6.0±0.4	5.0±0.4	1.2	2.460	24.1	9.8	235.6
H12/6/4	12.0±0.4	6.0±0.4	4.0±0.4	1.7	2.266	26.1	11.5	301.3
H12.5/7.5/5	12.5±0.4	7.5±0.4	5.0±0.4	1.75	2.460	30.1	12.3	368
H12.7/7.1/4.7	12.7±0.4	7.1±0.4	4.7±0.4	2	2.299	29.4	12.8	376.4
H12.7/7.92/4.5	12.7±0.4	7.92±0.4	4.5±0.4	1.7	2.957	31.2	10.6	329.6
H13/7/5	13.0±0.4	7.0±0.4	5.0±0.4	2.3	2.030	29.5	14.5	428.6
H13.3/7.4/3.6	13.3±0.4	7.4±0.4	3.6±0.4	1.7	2.977	30.7	10.3	317.0
H13.9/7.57/6.9	13.9±0.5	7.57±0.5	6.9±0.4	2.6	1.498	31.7	21.2	672.2
H14/8/7	14.0±0.5	8.0±0.5	7.0±0.4	2.7	1.604	32.8	20.5	671.5
H14/9/9.3	14.0±0.5	9.0±0.5	9.3±0.4	4.1	1.530	35.0	22.9	800
H14.8/5.2/12	14.8±0.5	5.2±0.5	12.0±0.4	8.3	0.501	26.4	52.6	1387
H16/9/5	16.0±0.5	9.1±0.5	5.0±0.4	3.2	2.221	37.4	16.8	628.5
H16/9.6/9.3	16.0±0.5	9.6±0.5	9.3±0.4	4.9	1.323	38.5	29.1	1121.5
H16/10/6	16.0±0.5	10.0±0.5	6.0±0.4	3.4	2.228	39.4	17.7	695.8
H16/12/8	18.0±0.5	12.0±0.5	8.0±0.4	3.2	2.730	43.4	15.9	689.3
H18/8/5	18.0±0.5	8.0±0.5	5.0±0.4	4.7	1.550	36.7	23.7	868.4
H18/10/7	18.0±0.5	10.0±0.5	7.0±0.4	6	1.527	41.5	27.2	1130
H18/12/6	18.0±0.5	12.0±0.5	6.0±0.4	4.1	2.583	45.8	17.7	814
H19/13.5/7	18.9±0.5	13.7±0.5	7.0±0.4	4.4	2.790	50.3	18.0	908.3
H20/10/10	20.0±0.5	10.0±0.5	10.0±0.4	12	0.906	43.5	48.0	2092
H20/12/10	20.0±0.5	12.0±0.5	10.0±0.4	10	1.230	48.2	39.1	1885
H22/14/8	22.0±0.8	14.0±0.6	8.0±0.5	8.8	1.738	54.7	31.5	1720
H24.6/15.1/15	24.65±0.8	15.1±0.6	15.0±0.5	22	0.858	59.9	69.8	4186
H25/15/10	25.0±0.8	15.0±0.6	10.0±0.5	15	1.230	60.2	48.9	2944
H26/14/15	26.1±0.8	14.25±0.6	15.0±0.5	26	0.677	59.0	87.2	5145
H28/12.5/9	28.0±0.8	12.5±0.6	9.0±0.5	21	0.866	57.2	66.1	3780

NOTE: C尺寸可根据客户需要调整。

环型磁心

RING Cores



型号 Type	AL(nH/N ²)				
	HP1 (±25%)	HP2 (±25%)	HP3 (±30%)	LP3 (±25%)	LP3A (±25%)
H8/4/4.2	2900	4070	5800	1340	1340
H9/5/4	2350	3290	4700	1080	1080
H10/6/5	2550	3570	5100	1170	1170
H12/6/4	2770	3880	5540	1270	1270
H12.5/7.5/5	2550	3570	5100	1170	1170
H12.7/7.1/4.7	2730	3820	5460	1250	1250
H12.7/7.92/4.5	2120	2970	4240	970	970
H13/7/5	3100	4300	6190	1420	1420
H13.3/7.4/3.6	2100	2950	4220	970	970
H13.9/7.57/6.9	4200	5870	8380	1930	1930
H14/8/7	3900	5480	7830	1800	1800
H14/9/9.3	4100	5740	8210	1890	1890
H14.8/5.2/12	12500	17550	25080	5760	5760
H16/9/5	2830	3960	5650	1300	1300
H16/9.6/9.3	4750	6640	9490	2180	2180
H16/10/6	2820	3940	5640	1300	1300
H16/12/8	2300	3220	4600	1050	1050
H18/8/5	4050	5670	8100	1860	1860
H18/10/7	4110	5760	8220	1890	1890
H18/12/6	2430	3400	4860	1110	1110
H19/13.5/7	2250	3150	4500	1030	1030
H20/10/10	6930	9700	13860	3180	3180
H20/12/10	5100	7150	10210	2340	2340
H22/14/8	3700	5160	7370	1700	1700
H24.6/15.1/15	7320	10250	14640	3360	3360
H25/15/10	5100	7150	10200	2340	2340
H26/14/15	9300	13000	18000	4140	4140
H28/12.5/9	6900	9640	13800	3170	3170

环型磁心

RING Cores

型号 Type	尺寸 Dimensions			重量 Weight (g/prs)	磁芯参数 Core parameter			
	A	B	C		C ₁ (mm ⁻¹)	Le (mm)	Ae (mm ²)	Ve (mm ³)
H28/19/12	28.0±0.8	19.0±0.6	12.0±0.5	18.8	1.350	72.0	53.3	3840
H31/18/14	31.0±1.0	18.0±0.8	14.0±0.5	33	0.826	73.3	88.8	6506
H31/19/15	31.0±1.0	19.0±0.8	15.0±0.5	33	0.856	75.5	88.2	6658
H31/20/15	31.0±1.0	20.0±0.8	15.0±0.5	31	0.956	77.6	81.2	6303
H32/12.5/7.5	32.0±1.0	12.5±0.8	7.5±0.5	24	0.891	60.6	68	4119
H34/20.5/12.5	34.0±1.0	20.5±0.8	12.5±0.5	34	0.994	82.1	82.6	6776
H35/18.3/15	35.0±1.0	18.3±0.8	15.0±0.5	49	0.646	78.1	121	9453
H36/23/15	36.0±1.0	23.0±0.8	15.0±0.5	45	0.935	89.7	95.9	8597
H37.7/22/15	37.7±1.0	22.0±0.8	15.0±0.5	53	0.778	89.3	115	10262
H37.7/25/16	37.7±1.0	25.0±0.8	16.0±0.5	48	0.956	95.8	100	9599
H38/19/13	38.0±1.0	19.0±0.8	13.0±0.5	57	0.697	82.7	118.6	9805
H38/22/14	38.0±1.0	22.0±0.8	14.0±0.5	48	0.821	89.7	109	9791
H38/25/16	38.0±1.0	25.0±0.8	16.0±0.5	47	0.938	96.1	102.5	9854
H40/22/20	40.0±1.0	22.0±0.8	20.0±0.5	82	0.526	91.7	174	16016
H42/26/12.5	41.8±1.0	26.2±0.8	12.5±0.5	30	1.076	103	95.7	9861
H45/26/20	45.0±1.0	25.2±0.8	12.0±0.5	98	0.903	104.3	115.5	12042
H48/30/15	48.0±1.0	30.0±0.8	15.0±0.5	79	0.891	118.2	132.6	15676
H49/31.8/19	49.0±1.0	31.8±0.8	19.0±0.5	98	0.765	123.2	161	19832
H49/33/16	49.1±1.0	32.8±0.8	15.9±0.5	75	0.980	125	128	16107
H49/34/16	49.1±1.0	33.8±0.8	15.9±0.5	74	1.058	127	120	15305
H56/26/20	56.0±1.5	25.7±1.0	20.0±1.0	170	0.403	115.2	286	32926
H56/32/18	56.0±1.5	32.0±1.0	18.0±1.0	140	0.624	131.4	211	27699
H58.3/40.8/17.6	58.3±1.5	40.8±1.0	17.6±1.0	115	1.000	152.5	152.5	23253
H63/38/25	63.0±1.5	38.0±1.0	25.0±1.0	229	0.490	151	308	46525
H68/44/15	68.0±1.5	44.0±1.2	15.0±1.0	164	0.962	170.5	177	30217
H74/39/13	73.66±1.5	38.86±1.3	12.7±0.6	187	0.770	165	213.6	35298
H78/50.5/16	78.0±1.5	50.5±1.0	16.0±0.8	209	0.903	195.7	216.6	42388
H80/40/20	80.0±2.5	40.0±2.0	20.0±1.2	356	0.453	174	384	66868
H85.7/55.6/25.4	85.7 ⁺² ₋₁	55.6±1.5	25.4±1.5	407	0.571	215.9	378	81632
H87/54.4/14	87.0±2.5	54.4±2.0	14.0±1.2	235	0.941	213	227	48385
H100/50/20	100.0±3.0	50.0±2.5	20.0±1.5	550	0.453	218.5	482	105370
H102/65/20	102.0±3.0	65.0±3.0	20.0±1.5	460	0.708	262	370	97000
H117/80/23	117.0±3.0	80.0±2.5	23.0±1.5	625	0.719	302	420	126913
H124/60/40	122.5±3.0	60.0±2.5	40.0±1.5	1741	0.220	269	1223	32896
H140/100/25	140.0±3.0	100.0±2.0	25.0±1.5	839	0.747	369	495	182777

NOTE: C尺寸可根据客户需要调整。

型号 Type	AL(nH/N ²)				
	HP1 (±25%)	HP2 (±25%)	HP3 (±30%)	LP3 (±25%)	LP3A (±25%)
H28/19/12	4400	6180	8840	2030	2030
H31/18/14	7600	10640	14500	3330	3330
H31/19/15	7000	9760	14000	3220	740.6
H31/20/15	6250	8740	12500	2870	2870
H32/12.5/7.5	6700	9370	13400	3080	
H34/20.5/12.5	6000	8400	12000	2760	
H35/18.3/15	9200	12930	18500	4250	
H36/23/15	6720	9400	13400	3000	
H37.7/22/15	7300	10500	15300	3520	
H37.7/25/16	5900	8500	12500	2870	
H38/19/13	9000	12600	17000	3900	
H38/22/14	6900	9600	13700	3150	
H38/25/16	6000	8500	12000	2760	
H40/22/20	11800	15000		5420	
H42/26/12.5	6000	7760		2760	
H45/26/20	10900	15000		5010	
H48/30/15	7000	9500		3220	
H49/31.8/19	8000	10800		3680	
H49/33/15	6000	8500		2760	
H49/34/16	5900	8000		2710	
H56/26/20	15000	20500		6900	
H56/32/18	9000	13500		4140	
H58.3/40.8/17.6	6000	8300		2760	
H63/38/25	12000	17000		5520	
H68/44/15	6300	9000		3000	
H74/39/13	8000	11000		3700	
H78/50.5/16	6800	9500		3120	
H80/40/20	13000	18000		5980	
H85.7/55.6/25.4	10000	15000		4600	
H87/54.4/14	6000	9000		2760	
H100/50/20	12500	17000		5750	
H102/65/20	7500	10800		3450	
H117/80/23	7200	10500		3310	
H124/60/40	22000	34000		10120	
H140/100/25	6700	10000		3080	

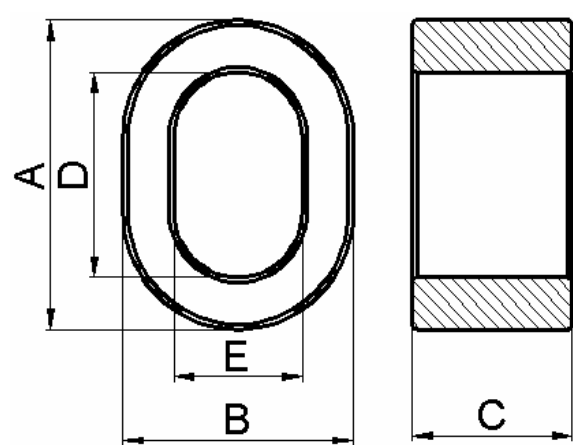


图1 Fig.1

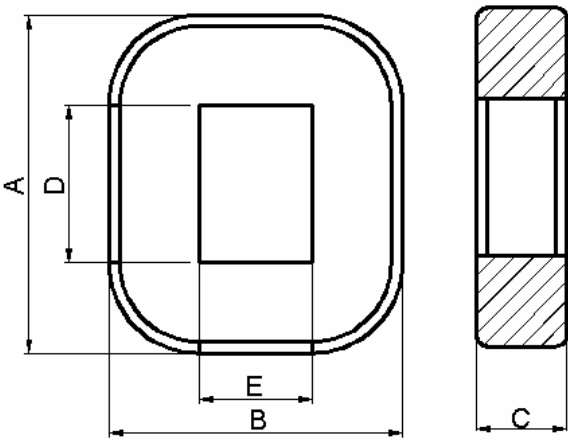
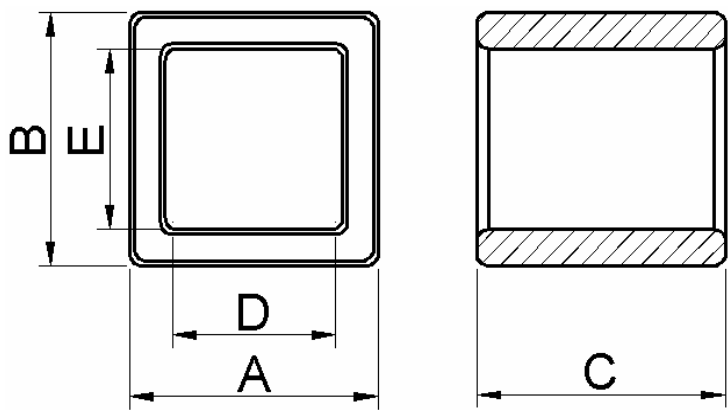


图2 Fig.2

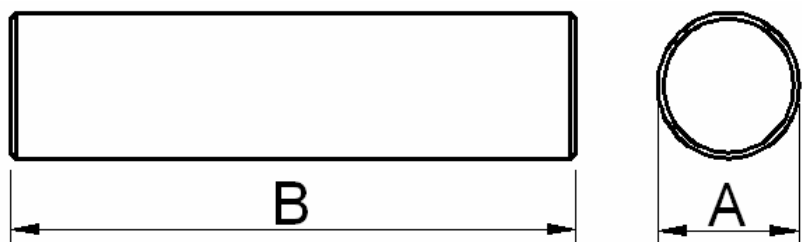
型号 Type	图号 Fig	尺寸 Dimensions (mm)				
		A	B	C	D	E
DT26	1	25.7±0.3	19.6±0.3	13.3±0.25	17.3±0.3	10.9±0.25
DT100	1	100.0±2.5	65.5±1.5	17.0±1.0	72.0±1.0	40.0±1.0
DT150	2	150.0±4.0	130.0±2.5	40.0±3.0	70.0±2.0	50.0±3.0

型号 Type	磁芯参数 Core parameter				重量 weight (g/prs)	AL(nH/N ²)	
	C1 (mm ⁻¹)	Le (mm)	Ae (mm ²)	Ve (mm ³)		HP1 (±25%)	LP3 (±25%)
DT26	1.06	61.1	57.7	3525	13.5	5500	
DT100	0.78	234	288	67400	220		2600
DT150	0.22	366	1640	600000	2500		8000

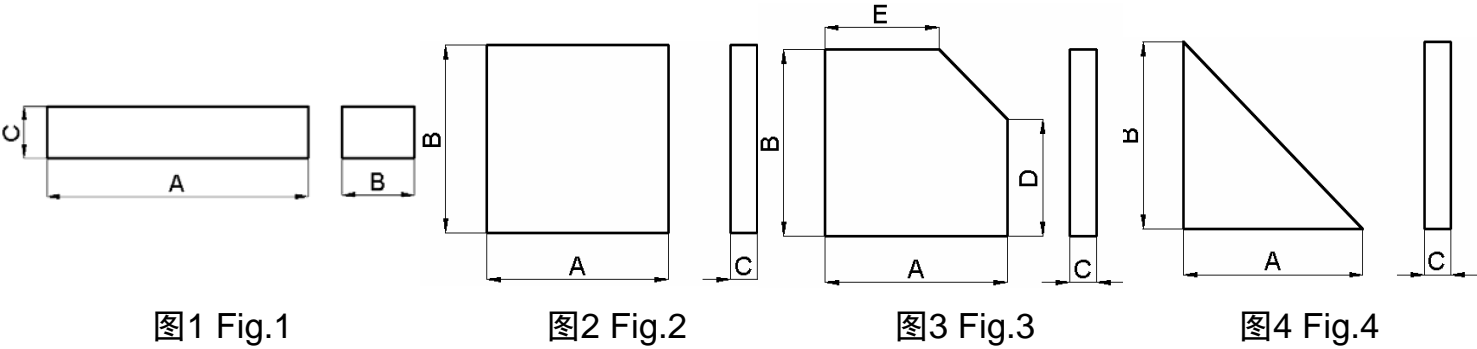


型号 Type	尺寸 Dimensions				
	A	B	C	D	E
S107	11.0±0.25	11.0±0.25	7.5±0.25	7.5±0.15	7.5±0.15
S109	11.0±0.25	11.0±0.25	9.5±0.25	7.5±0.15	7.5±0.15
S129	12.0±0.3	13.5±0.25	9.0±0.25	8.2±0.2	9.7±0.2

型号 Type	磁芯参数 Core parameter				重量 weight (g/pcs)	AL(nH/N ²)
	C1 (mm ⁻¹)	Le (mm)	Ae (mm ²)	Ve (mm ³)		LP3 (±25%)
S107	3.086	34.7	11.3	391	1.9	750
S109	2.436	34.70	14.3	495.0	2.4	950
S129	2.443	41.77	17.1	714.3	4.5	950



型号 Type	尺寸 Dimensions		重量 Weight g/pcs
	A	B	
R4.3/5	4.3±0.15	5.0±0.2	0.35
R5/6.8	5.0±0.2	6.8±0.2	0.65
R5.8/6.8	5.8±0.2	6.8±0.2	0.87
R7/7.3	7.0±0.2	7.3±0.2	1.3
R16.3/100	16.3±0.3	100.0±2.0	100
R17.8/25	17.8±0.3	25.0±0.3	30
R19/15	19.0±0.3	15.0±0.3	21
R21.7/23	21.7±0.3	23.0±0.3	41



型号 Type	图号 Fig	重量 Weight g/pcs	尺寸 Dimensions				
			A	B	C	D	E
FK24.5/16.7/8.5	1	16.5	24.5±0.3	16.7±0.3	8.5±0.2		
FK37.63/37.63/20	4	66	37.63±0.3	37.63±0.3	20.0±0.3		
FK50/50/8.3	2	99	50.0±0.3	50±0.3	8.5±0.2		
FK51.7/37.6/20	3	217	51.7±0.3	51.7±0.3	20.0±0.2	37.6±0.3	37.6±0.3
FK51.7/41.7/20	3	227	51.7±0.3	51.7±0.3	20.0±0.3	41.7±0.3	41.7±0.3
FK51.7/51.7/20	2	254	51.7±0.3	51.7±0.3	20.0±0.3		
FK70/28/28	1	261	70.0±0.3	28.0±0.3	28.0±0.3		
FK76.5/40.5/25.5	1	376	76.5±0.3	40.5±0.3	25.5±0.3		
FK200/40/20	1	760	200.0±1.0	40.0±1.5	20.0±1.5		