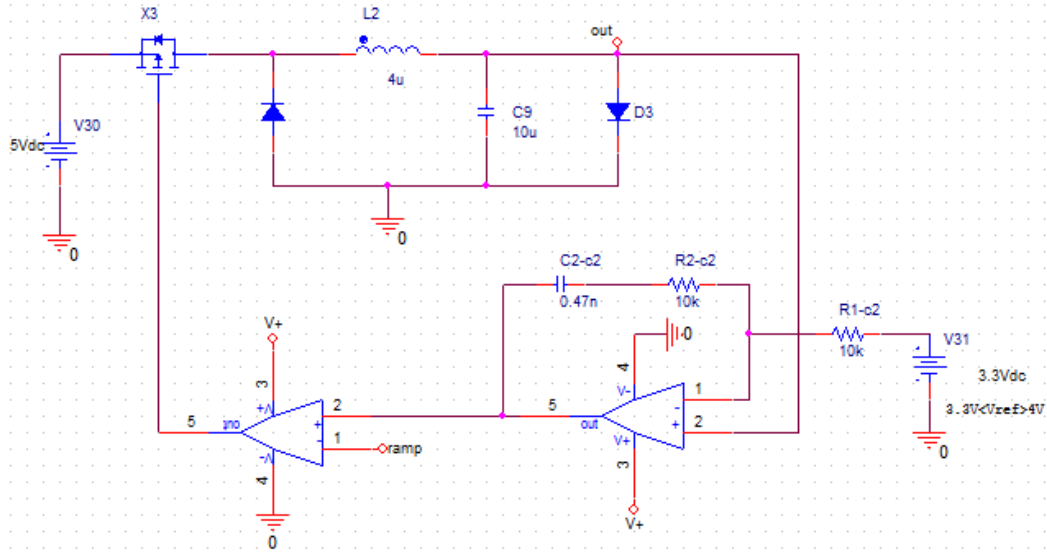
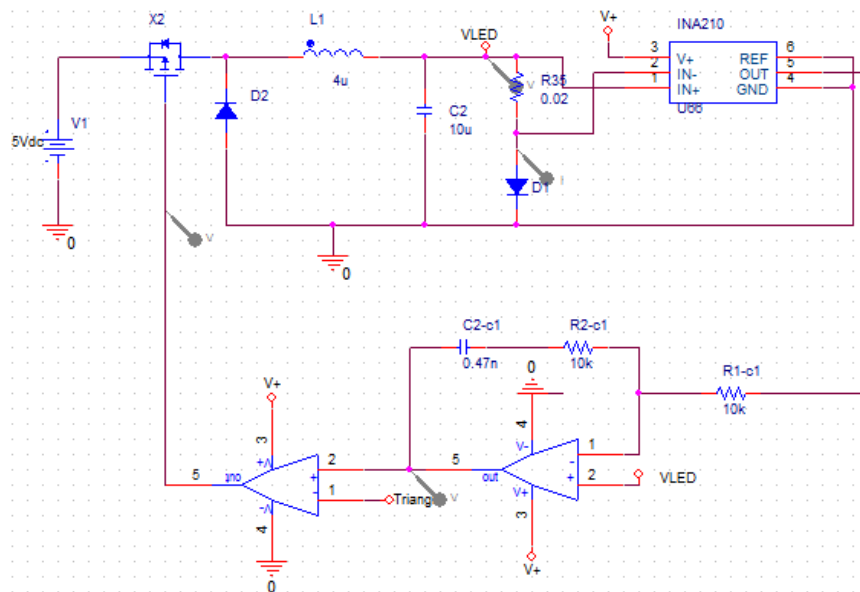


My design



Here is my design, it is working as required, D3 is a LED and there is a current flow of 1A, increase in the Vref (a value between 3.3 and 4V) increases the current through the LED. The signals still maintain their shape.

Now I have decided to remove Vref, to be replaced by a current monitor (INA210), which monitors the LED current, the INA210 produces a voltage output.



I am not able to obtain the required signals, voltages and current as before, I have also used different values for the Rshunt (R35). Please can someone help?

Secondly, I indeed to add a temperature measurement as an additional input but I don't know how to do this. What I mean is to put another current monitor to measure the LED current and use it as feedback to the temperature measurement. I don't intern to use a temperature sensor.

Can anyone be of help?