

Figure 1 limiting-receiver top-level schematics.

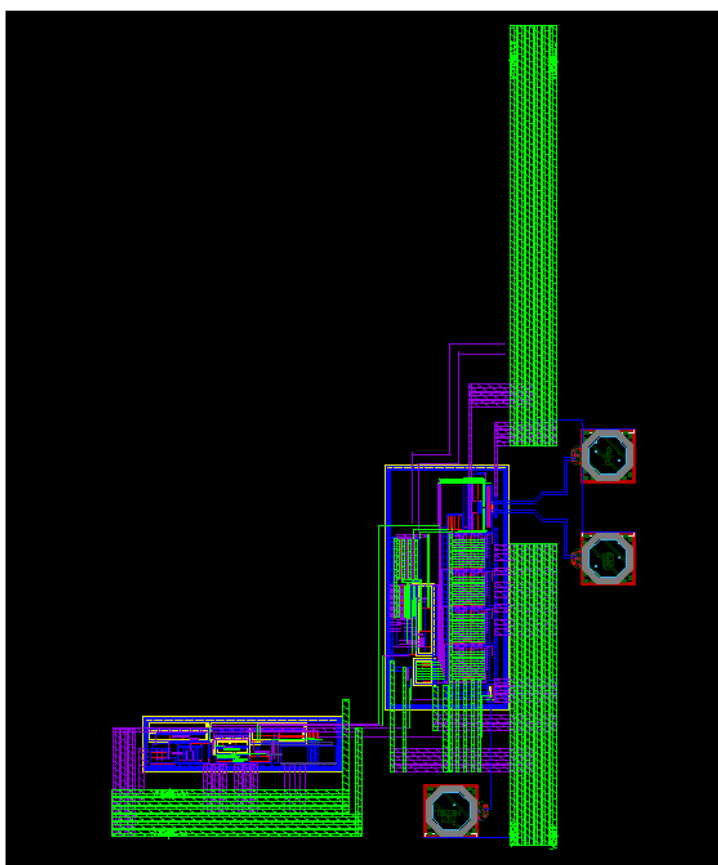


Figure 2 layout of limiting receiver (Figure 1) and bandgap references.

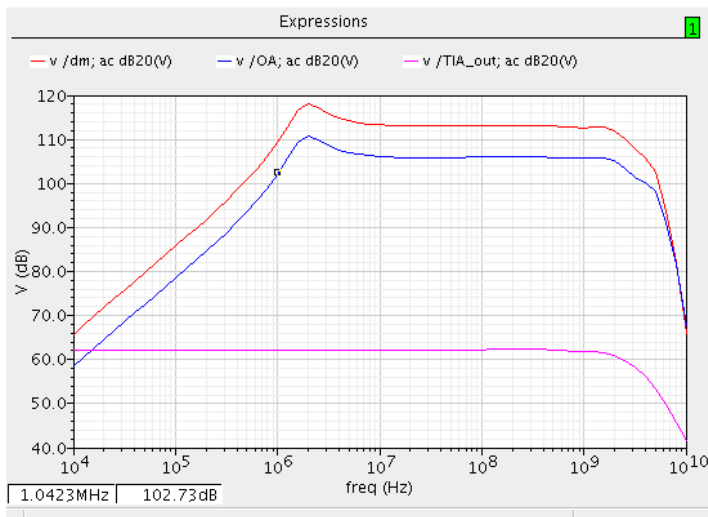


Figure 3 individually extracted sub-blocks simulation results.

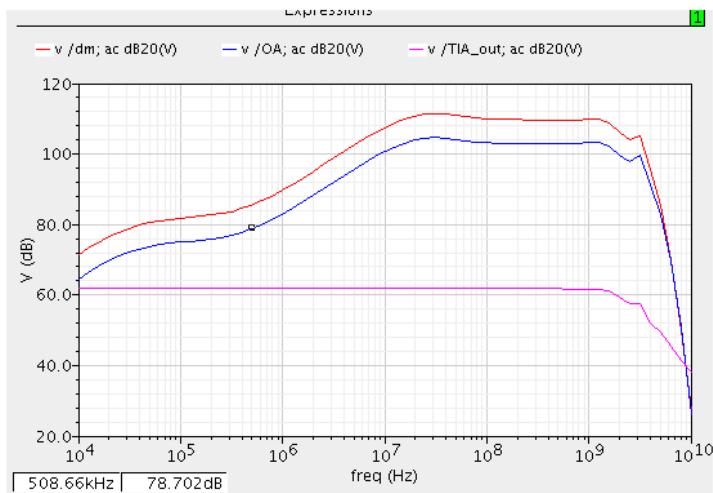


Figure 4 Overall extracted simulation.



Figure 5 Layout of Figure 1, without bandgap

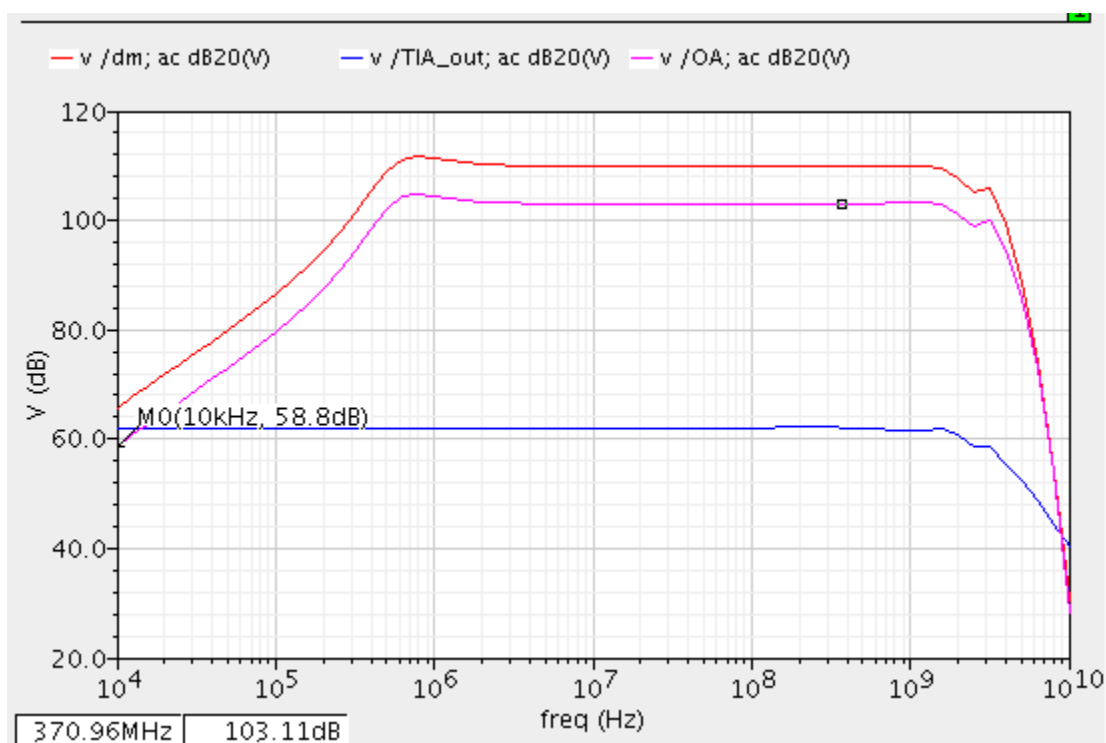


Figure 6 simulation of extracted of Figure 5, with extracted bandgap but connect in schematic at the top-level

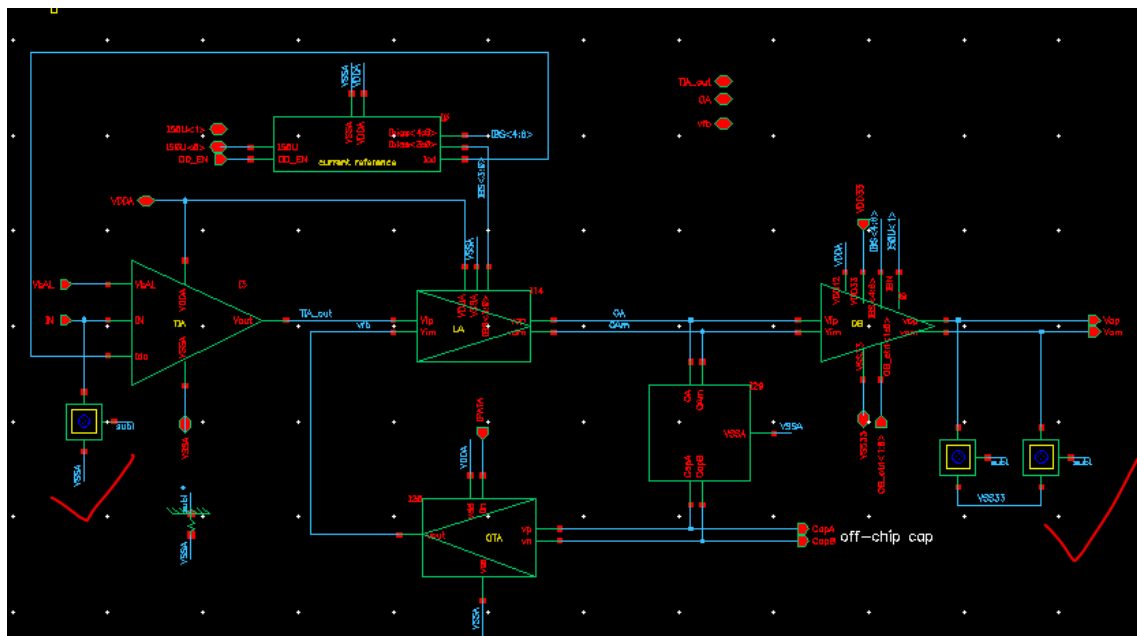


Figure 7 Adding pad for extraction

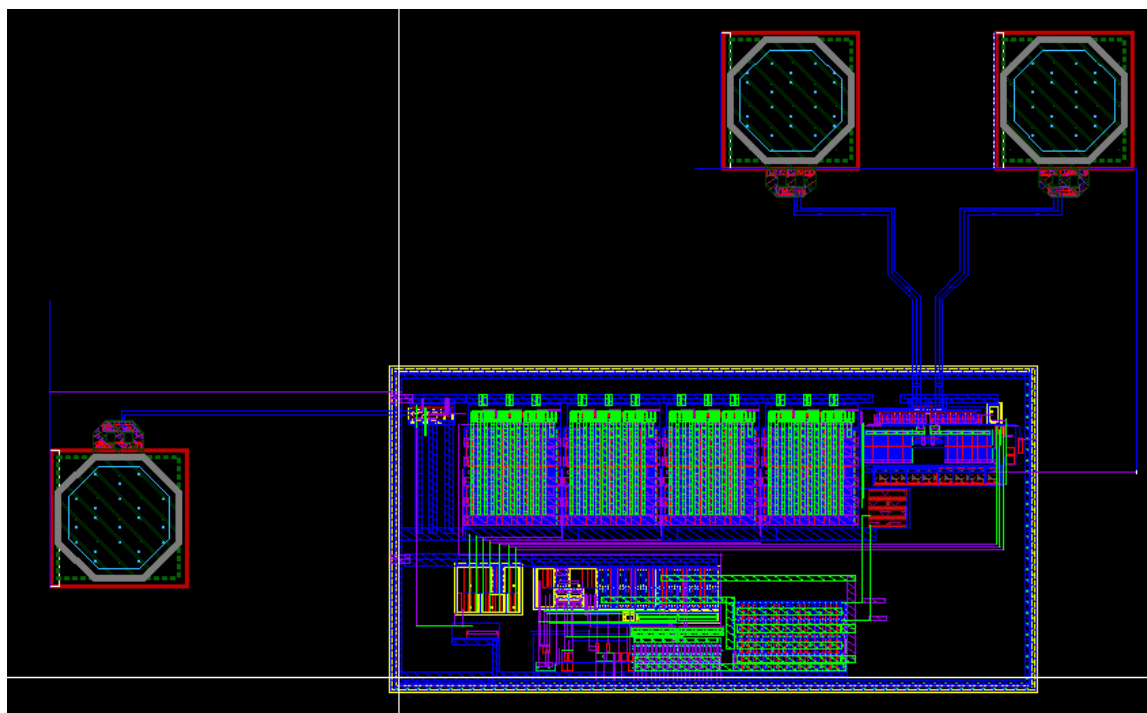


Figure 8 Layout of Figure 7

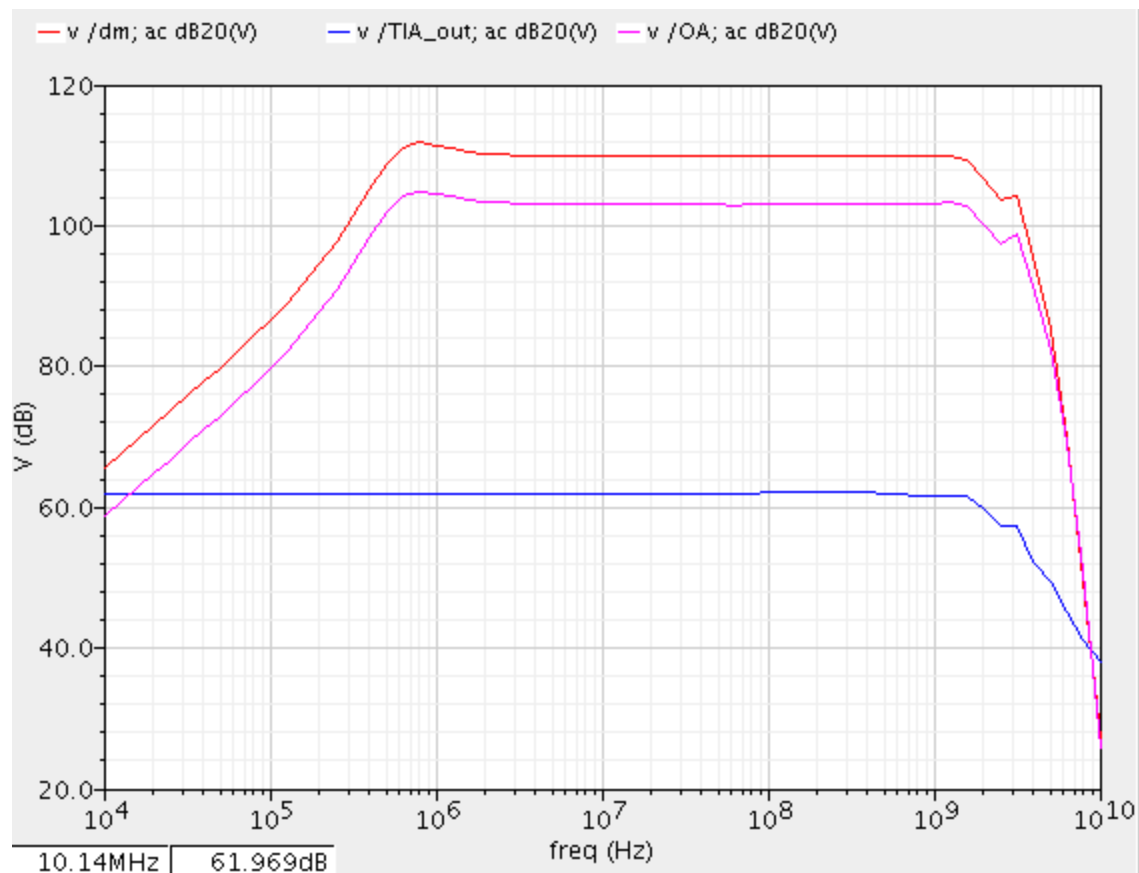


Figure 9 simulation of Figure 8, pad added, but not significant changes of the magnitude response.

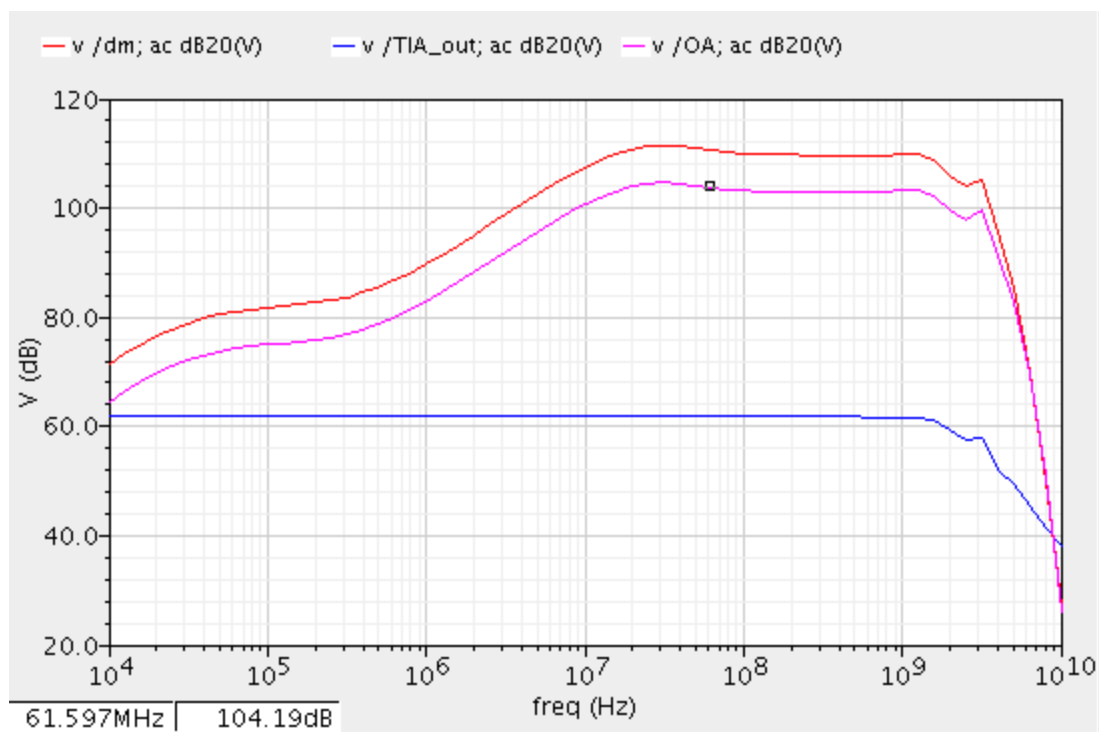


Figure 10 Same problem exist even changing metal layer for the bias and PTAT current.

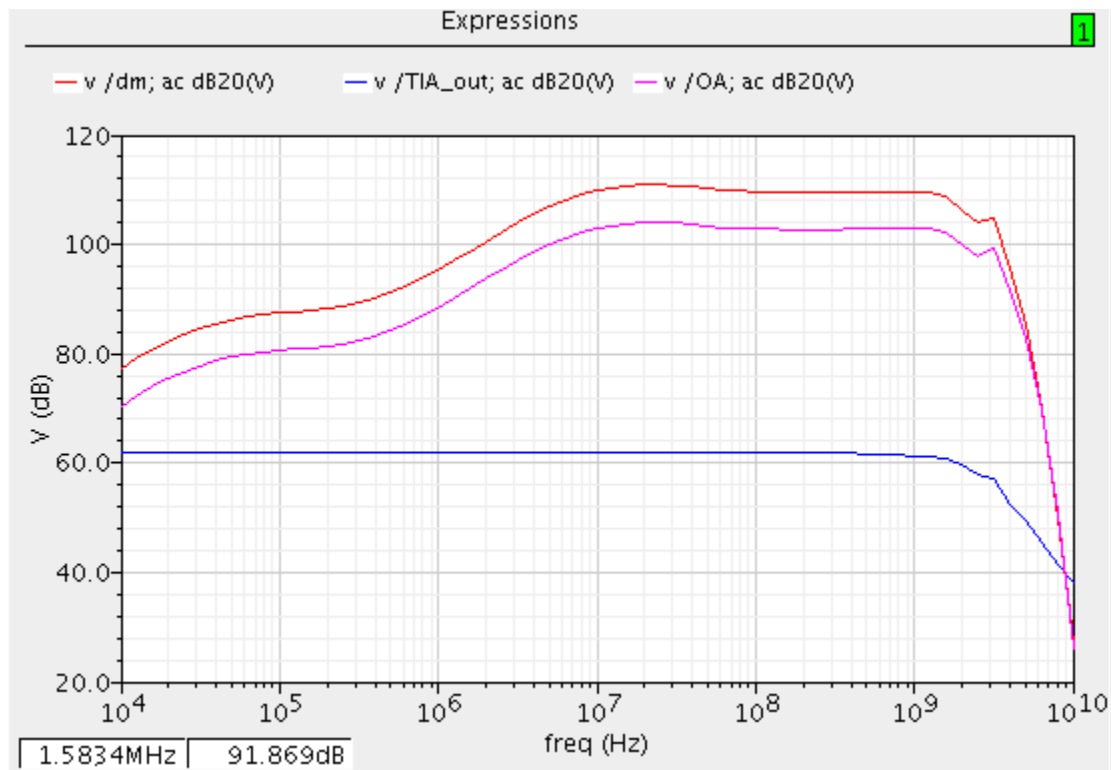
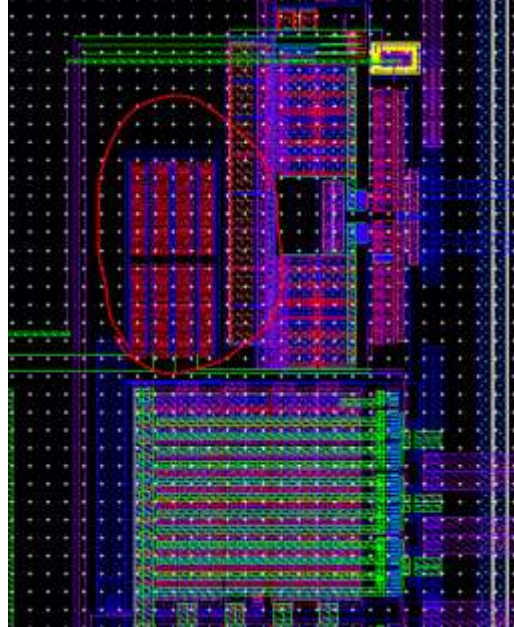


Figure 11 Feedback resistances doubled, just a little effect, still not good.