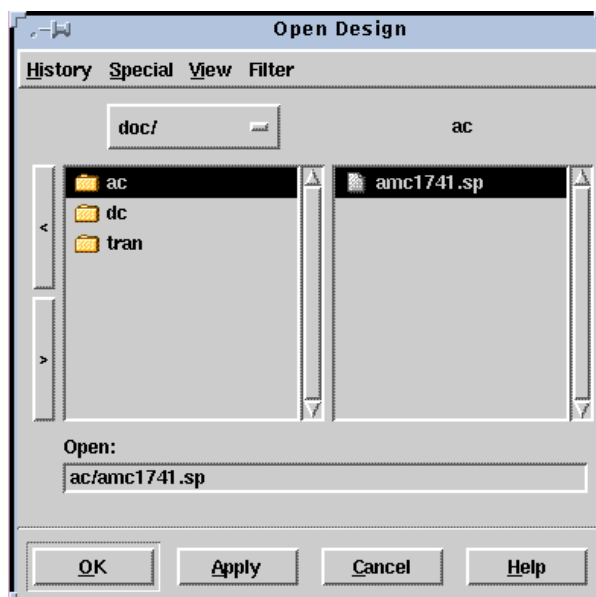

Open Design Window

The Open Design window shown in [Figure 3-1](#) allows you to open one or more designs in AvanWaves. The window has a menu bar with four menus, a pop-up directory selector button, lists of directories and files, scrolling buttons for the lists, and an Open field.

To select a directory, click and hold down the pop-up directory selector button, and slide the selector to the directory name. The left-hand list shows the contents of the directory you select. If the item selected in the left-hand list is a directory, the contents of that directory are shown in the right-hand list.

Figure 3-1 Open Design Window



To open a design:

1. From the results display window, select **Design > Open**.
2. In the Open Design window directory selector pop-up menu, select the directory that contains the design you want to open. This is the *run* directory.
3. If the design file is in a subdirectory of the *run* directory, select the subdirectory in the left-hand list area in the **Open Design** window.
4. In the right-hand list area, select the simulation file you want to open.
5. On opening the design, AvanWaves collects all of the files associated with this design (the HSPICE input and output files and the other associated files having the same design root name) from the path specified.

You can navigate through the directory structure in the following ways:

- Enter a path and design name into the Open field in the dialog box.
- Double click on a directory to display its contents.
 - Use the < button to select the parent directory or use the > button to select a subdirectory.
 - In the History menu, select designs that you previously visited.
- Select a path from the pop-up menu. This menu always contains the name of your current directory.

To open the design, double click on the design name or select the design from the file list displayed, and then click **OK or Apply**.

Selecting Menus

The following selections can be made in the Open Design window:

History Menu

Select the History menu to get a list of the paths to designs previously visited in this AvanWaves session. The maximum number of paths that can be displayed is five. The first item in the list is the path to the current design. Selecting one of the paths from this list opens the selected design and close the currently-active design. The History list is updated whenever you use the **Special > Mark** or **Special > Unmark** command.

Special Menu

Select the Special menu to:

- Return to your home directory
- Mark a directory location for permanent entry in the History list
- Remove the current directory location from the marked list

View

Select the View option to change the order in which file names are displayed in the file list. You can display files:

- **by Name** — Lists the files by name in alphabetical order
- **by Date Modified** — Lists the files according to the last date they were modified
- **by Date Created** — Lists the files by the date created